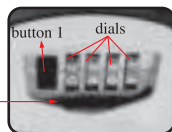


21x10.5cm

Combination Key Safe Box Instruction

To open the key box:

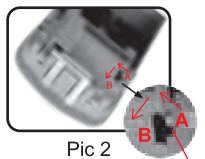
1. Slide shutter board to reveal the dials.
2. Rotate dials to the current combination(factory combination is 0-0-0-0).
3. Push down button1 near the dials, the cover is open.
4. After closing the cover, upset the dials to protect your combination.
5. Close the shutter board.



Pic 1

To set your combination :

1. Open the key box, leave dials at current combination(factory combination is 0-0-0-0).
2. Push the RESET button from position A to position B, as shown in Pic 2.
3. Now rotate dials to set your desired combination, as in Pic 1.
4. Push the RESET button back to position A. Now the new combination is set.
5. Close the shutter board.



Pic 2

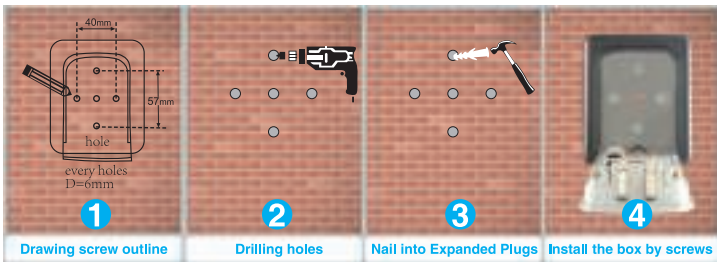
RESET button

Important notes:

1. Keep the shutter board closed for water resistance.
2. It is recommended that the dials are rotated weekly to keep them work well.

Instruction :

1. Open the box inside there will be 5 holes in the back of the box.
2. Hold the box to the wall and Mark position of holes with a pencil.
3. Using a masonry drill to drill the holes into wall.
4. Place plastic expanded plugs into the wall.
5. Place box against wall with screws.



Method 1: Installed on the wall



Method 2: Installed on the Peephole