

文件名称: Blind Tilt-SMS-EN-2211

设计师:WQY

完成时间:2022/11/23

版本号: V2.0-2211

成品尺寸:70mm*155mm

材质和工艺:
128g铜版纸 风琴折



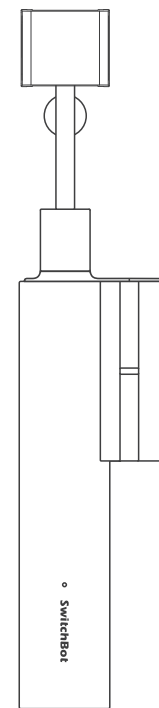
PT 2034C

更改内容:1.修改部分文案内容

备注:此表格不印刷、红色线框不印刷

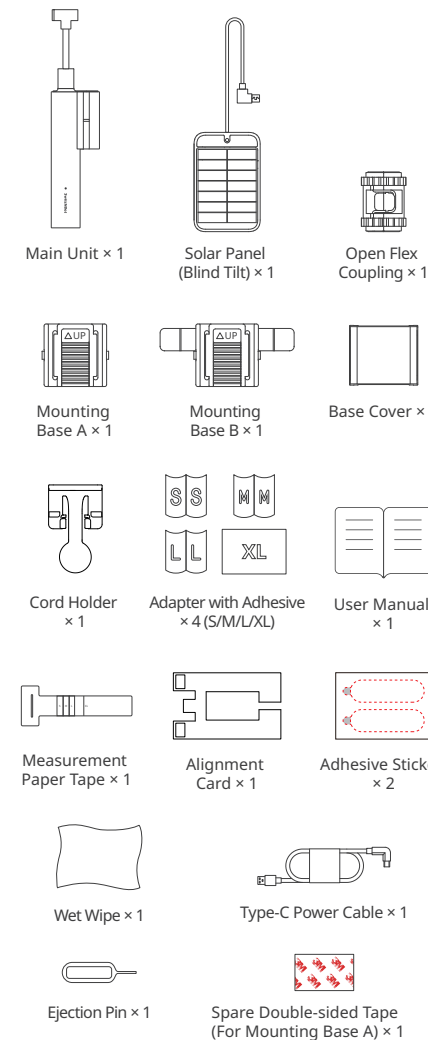
SwitchBot Blind Tilt

User Manual

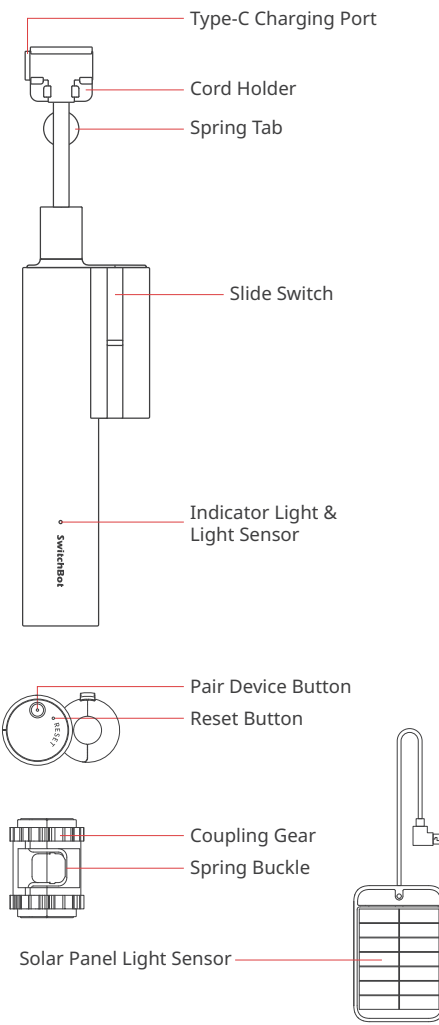


Please read this user manual carefully before using your device.

Package Contents



List of Components



Preparation

You will need:

- A smartphone or tablet using Bluetooth 4.2 or later.
- The latest version of our app, downloadable via the Apple App Store or Google Play Store.
- A SwitchBot account, you can register via our app or sign in to your account directly if you already have one.

Please note: If you intend to use the Cloud Service feature, you will need a SwitchBot Hub Mini (sold separately).



iOS 11.0+



Android OS 5.0+

Safety Information

- Keep this product away from heat and humidity, and make sure it does not come into contact with fire or water.
- This product is a precision-based electronic product, please avoid physical damage.
- Do not attempt to disassemble, repair, or modify the product.
- Do not use the product where wireless devices are not allowed.

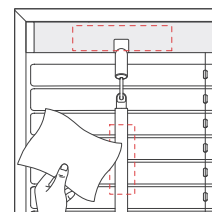
Installation

Step 1: Add your Blind Tilt to our app

Open the SwitchBot app and sign in to your account. Tap "+" at the top right of the home page, find the Blind Tilt icon and select, then follow the instructions to add your device.

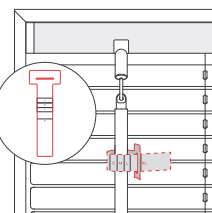
Step 2: Install onto your blinds

To ensure your Blind Tilt holds firmly on your blinds, use the wet wipe provided or neutral detergent to clean the headrail and the blind wand. Dirt or dust will affect adhesion and may cause dropping at a later time.

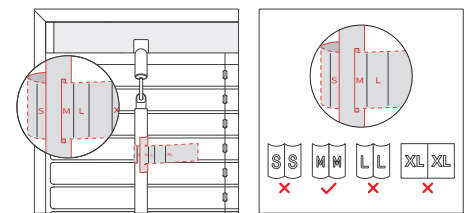


a. Use the measurement paper tape to determine an adapter for your blind wand

- 1 Wrap the measurement paper tape around your blind wand and tuck the narrower end of the paper tape into the gap on the other end. Slide the narrower end through the gap so the paper tape tightly fits the wand. Now check which size the marks on the paper tape indicate - S, M, L or XL.



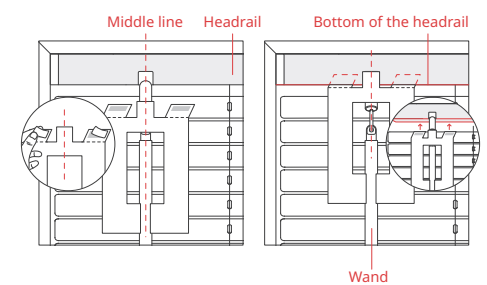
- 2 Select the adapter of the right size according to the result above.



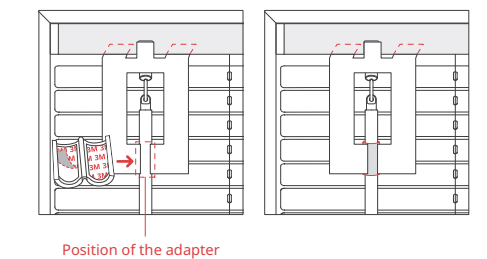
b. Install the mounting base and attach the adapter to your blind wand using the alignment card

Please note: The alignment card provided is an essential tool to help determine the position of the mounting base and the adapter.

- 1 Align the middle line on the alignment card with your blind wand. Then stick the two folded parts with adhesive to the bottom of the headrail.

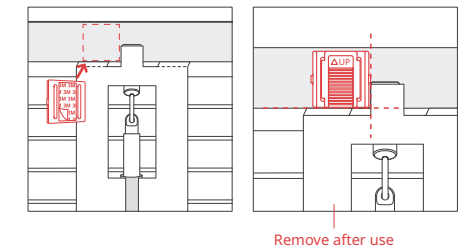


- 2 The gap at the middle bottom of the alignment card corresponds to where the adapter should be on the wand. Peel off the inner liner of the adapter and wrap it around your blind wand. Hold and pinch it for around 30 seconds.

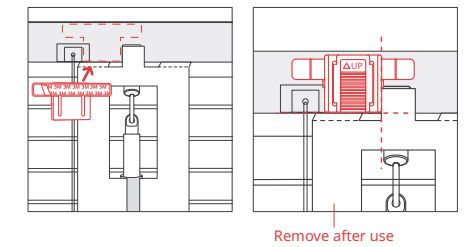


- 3 Select a mounting base that suits your blinds and stick it to the headrail where the alignment card indicates. We provide two types of mounting base. We recommend installing on the left using mounting base A in most cases.

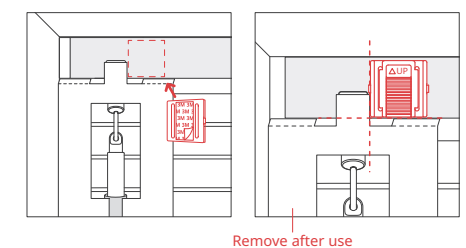
Option 1: stick mounting base A on the left (recommended).



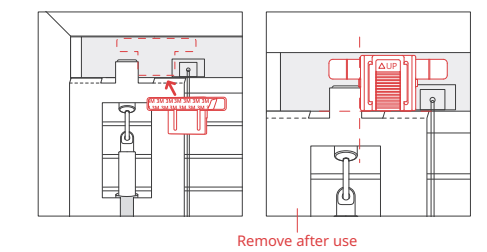
Option 2: if there is a lift cord close to your blind wand on the left, select mounting base B and stick it in between.



Option 3: if there is not enough space on the left, stick mounting base A on the right.

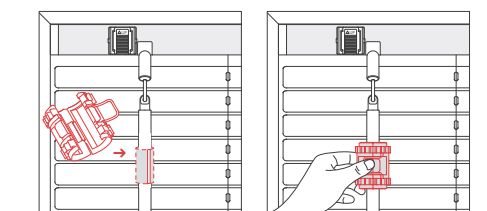


Option 4: if there is not enough space on the left and there is also a lift cord close to your blind wand on the right, select mounting base B and stick it in between.

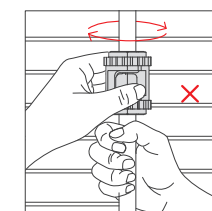


c. Attach the coupling onto the adapter

- 1 Open the coupling and attach it onto the adapter, then pinch and fasten the spring buckle.



- 2 Twist the coupling against the wand and make sure there is no relative sliding between the coupling and the adapter.

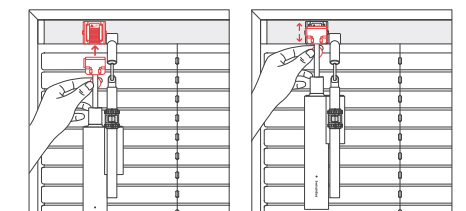


Note: If the coupling slides over the adapter when you twist it, use the measurement paper tape to measure your blind wand again and replace with a more suitable adapter.

d. Install the main unit of your Blind Tilt onto the wand

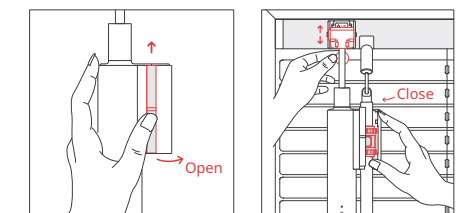
Mounting base on the left:

- 1 Pinch the spring tab on the cord holder and slide the cord holder upwards to fit into the mounting base.



- 2 Push the slide switch on the main unit upwards to open the case.

- 3 Align the gears on the coupling and inside the main unit, then close the main unit case. (Slide the cord holder up or down to adjust the position of main unit if you have difficulty aligning the gears.)



Continued on next page

Scannen Sie den QR-Code, um die deutsche Version unseres Benutzerhandbuchs zu erhalten.
<https://support.switch-bot.com/hc/de/articles/8072316298135>



Scannez le code QR pour obtenir no tre manuel d'utilisation en version française.
<https://support.switch-bot.com/hc/fr/articles/8072316298135>



Escanee el código QR para obtener la versión en español de nuestro manual de usuario.
<https://support.switch-bot.com/hc/es/articles/8072316298135>



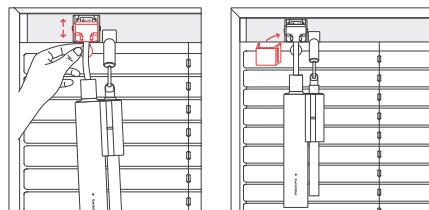
Scan de QR code voor de Nederlandse versie van onze gebruikershandleiding.
<https://support.switch-bot.com/hc/nl/articles/8072316298135>



Scansionate il codice QR per ottenere la versione italiana del nostro manuale d'uso.
<https://support.switch-bot.com/hc/it/articles/8072316298135>

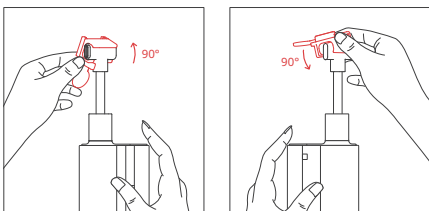


① Check if your blind wand is perpendicular to the ground. If not, pinch the spring tab to slide the cord up and down to adjust the wand's tilt angle. Finally, use the base cover to cover the mounting base.

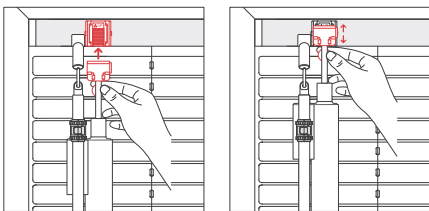


Mounting base on the right:

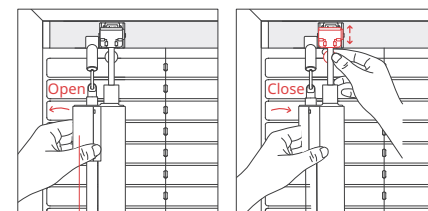
① Remove the cord holder from the Type-C port (turn 90° upwards from the bottom to remove), then install it back on from the other side (turn 90° downwards from the top to install back on). Now the Type-C port should be facing right.



② Pinch the spring tab to slide the cord holder from the bottom to fit into the mounting base.

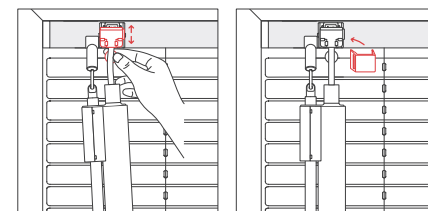


③ Push the slide switch upwards to open the main unit case. Align the gears on the coupling and inside the main unit, then close the main unit case. (Slide the cord holder up or down to adjust the position of main unit if you have difficulty aligning the gears.)



Main unit case

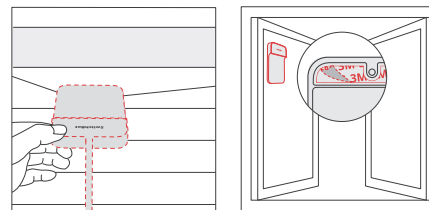
④ Check if your blind wand is perpendicular to the ground. If not, pinch the spring tab to slide the cord up and down to adjust the wand's tilt angle. Finally, use the base cover to cover the mounting base.



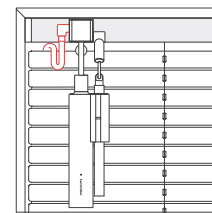
e. Stick Solar Panel onto the window (optional)

Note: Solar Panel is optional since Blind Tilt is battery powered.

① Stick Solar Panel onto the inner side of your window with its front facing outside. Select an appropriate position near the main unit so that the cord connecting Solar Panel will not be pulled when you open the window.

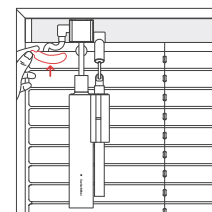


② Pass the cable of Solar Panel through the gap between the headrail and the top slat, then connect the cable to the main unit.



Note: Make sure the cable of Solar Panel passes from the gap above the top slat, otherwise your device may not work properly after installation.

③ Organize the cord of Solar Panel so that it does not affect the movement of the slats. Then fix the cord at the bottom of the headrail using the adhesive sticker.



Step 3: Calibration

After you have added and installed your SwitchBot Blind Tilt, you will need to calibrate it to ensure it works correctly. Please follow the instructions in our app and make sure that the actual movement of your blind slats is the same as the animation in our app. Recalibration is needed each time you remove and re-install the main unit. You can choose to recalibrate your Blind Tilt whenever you want on its Settings page.

Precautions

1. This product is not a toy. Keep children away from this product.
2. This product is only for indoor use. Please do not use this product in humid environment or outdoors.
3. Do not expose this product to liquids or operate with wet hands.
4. Do not place this product near heat sources in a closed environment.
5. Do not attempt to disassemble, modify or repair this product, unless by an authorized technician.
6. This product is designed to improve the convenience of home life. We do not account for any risks or property loss as possible results of not following this user manual.

Battery Replacement

It takes about 6.5 hours to fully charge your device battery and one full charge could last for about 10 months. You may also harness the sunlight to charge using the Solar Panel provided.

1. Use a 5V=1A adapter to charge your device.
2. Battery life is tested under conditions of opening and closing a 1.8 × 1.8 m blind with a 0.6 kgf.cm wand twice a day under 25 °C. Actual battery life may vary depending on different conditions.
3. Using Solar Panel to charge requires a level 6 illuminance level at least.

Note: Solar charging can get you unlimited battery life of your device. Under extreme conditions, like continuous cloudy days for years, the Solar Panel and the battery can last at least 3 years before next charging.

Resetting Factory Settings

Use the ejection pin to poke the Reset button once to reset your device to factory settings. Recalibration is needed after resetting.

Firmware Upgrades

In order to improve user experience, we will regularly release firmware updates to introduce new functions and solve any software defects that may occur during usage. When a new firmware version is available, we will send an upgrade notification to your account via our app. When upgrading, please make sure your product has sufficient battery and make sure your smartphone is within range to prevent interference.

Troubleshooting

Please visit our website or scan the QR code below for more information.

<https://support.switch-bot.com/hc/en-us/categories/7566387770903>



Specifications

Color: White
Material: ABS+PC, UV-resistant coating
Size: 48.8 × 29.2 × 210 mm (1.9 × 1.1 × 8.3 in.)
Weight: 130 g (4.6 oz.)
Power: Type-C, DC 5V=1A; 2000 mAh lithium battery
Battery Life: Approx. 10 months or almost unlimited with the Solar Panel
Operating Temperature: -10 °C to 45 °C (14 °F to 113 °F)
Operating Humidity: 10 % to 95 % RH
Torque Strength: ≤ 1 kgf.cm
Network Connectivity: Bluetooth 5.0
System Requirements: iOS 11.0+, Android OS 5.0+

Warranty

We warrant to the original owner of the product that the product will be free from defects in materials and workmanship. Please note that this limited warranty does not cover:

1. Products submitted beyond the original limited warranty period.
2. Products on which repairs or modifying have been attempted.
3. Products subjected to falls, extreme temperatures, water, or other operating conditions outside the product specifications.
4. Damage due to natural disaster (including but not limited to lightning, flood, tornado, earthquake, or hurricane, etc.).
5. Damage due to misuse, abuse, negligence or casualty (e.g. fire).
6. Other damage that is not attributable to defects in the manufacture of product materials.
7. Products purchased from unauthorized resellers.
8. Consumable parts (including but not limited to batteries).
9. Natural wear of the product.

Contact & Support

Setup and Troubleshooting: support.switch-bot.com
Support Email: support@wondertechlabs.com

Feedback: If you have any concerns or problems when using our products, please send feedback via our app through the Profile > Feedback page.

CE/UKCA Warning

To comply with RF exposure requirements, a minimum separation distance of 20 cm must be maintained between the user's body and the device, including the antenna. Use only the supplied or an approved antenna. This device is in compliance with the essential requirements and other relevant provisions of directive 2014/53/EU. All essential radio test suites have been carried out.

CE DOC

Hereby, Woan Technology (Shenzhen) Co., Ltd. declares that the radio equipment type W2701600 is in compliance with Directive 2014/53/EU. The full text of the EU declaration of conformity is available at the following internet address: support.switch-bot.com

UKCA DOC

Hereby, Woan Technology (Shenzhen) Co., Ltd. declares that the radio equipment type W2701600 is in compliance with UK Radio Equipment Regulations (SI 2017/1206). The full text of the UK declaration of conformity is available at the following internet address: support.switch-bot.com

This product can be used in EU member states and UK.

Manufacturer: Woan Technology (Shenzhen) Co., Ltd.
Address: Room 1101, Qiancheng Commercial Center, No. 5 Haicheng Road, Mabu Community, Xixiang Subdistrict, Bao'an District, Shenzhen, Guangdong, P.R.China, 518100

Operation frequency
BLE: 2402 MHz to 2480 MHz
Operation temperature: -10 °C to 45 °C

FCC Warning

This device complies with Part 15 of the FCC Rules. Operation is subject to the following two conditions:
(1) This device may not cause harmful interference.
(2) This device must accept any interference received, including interference that may cause undesired operation.

NOTE: This equipment has been tested and found to comply with the limits for a Class B digital device, pursuant to part 15 of the FCC Rules. These limits are designed to provide reasonable protection against harmful interference in a residential installation.

This equipment generates uses and can radiate radio frequency energy and, if not installed and used in accordance with the instructions, may cause harmful interference to radio communications. However, there is no guarantee that interference will not occur in a particular installation. If this equipment does cause harmful interference to radio or television reception, which can be determined by turning the equipment off and on, the user is encouraged to try to correct the interference by one or more of the following measures:

- Reorient or relocate the receiving antenna.
- Increase the separation between the equipment and receiver.
- Connect the equipment into an outlet on a circuit different from that to which the receiver is connected.
- Consult the dealer or an experienced radio/TV technician for help.

NOTE: The manufacturer is not responsible for any radio or TV interference caused by unauthorized modifications to this equipment. Such modifications could void the user's authority to operate the equipment.

FCC Radiation Exposure Statement

This equipment complies with FCC radiation exposure limits set forth for an uncontrolled environment. This equipment should be installed and operated with minimum distance 20 cm between the radiator and your body.

IC Warning

This device contains license-exempt transmitter(s)/ receiver(s) that comply with Innovation, Science and Economic Development Canada's license-exempt RSS(s). Operation is subject to the following two conditions:

- (1) This device may not cause interference.
- (2) This device must accept any interference, including interference that may cause undesired operation of the device.

L'émetteur/récepteur exempt de licence contenu dans le présent appareil est conforme aux CNR d'Innovation, Sciences et Développement économique Canada applicables aux appareils radio exempts de licence. L'exploitation est autorisée aux deux conditions suivantes :

- (1) L'appareil ne doit pas produire de brouillage.
- (2) L'appareil doit accepter tout brouillage radioélectrique subi, même si le brouillage est susceptible d'en compromettre le fonctionnement.

IC Radiation Exposure Statement

This equipment complies with the IC radiation exposure limits established for uncontrolled environment. This equipment must be installed and operated at least 20 cm from a radiator or your body. Cet équipement est conforme aux limites d'exposition aux rayonnements de la IC établies pour un environnement non contrôlé. Cet équipement doit être installé et fonctionner à au moins 20cmde distance d'un radiateur ou de votre corps.