



# Owner's Manual IPS LED MONITOR (LED MONITOR\*)

\*LG LED Monitors are LCD Monitors with LED Backlighting.

Please read the safety information carefully before using the product.

IPS LED Monitor (LED Monitor) Model List  
29UM59A

# CONTENTS

## 3 LICENSE

---

## 4 ASSEMBLING AND PREPARING

---

- 4 Product Components
- 5 Supported Drivers and Software
- 6 Component and Button Description
- 6 - How to Use the Joystick Button
- 7 Input Connector
- 8 Moving and Lifting the Monitor
- 9 Installing the Monitor
- 9 - Assembling the stand base
- 10 - Using the cable holder
- 10 - Installing onto a table
- 11 - Adjusting the angle
- 12 - Using the Kensington lock
- 13 - Installing the wall mount plate
- 13 - Installing to a wall

## 15 USING THE MONITOR

---

- 15 Connecting to a PC
- 15 - HDMI connection
- 16 - USB-C connection
- 16 Connecting to AV Devices
- 16 - HDMI connection
- 17 Connecting to External Devices
- 17 - Connecting Headphones

## 18 USER SETTINGS

---

- 18 Activating the Main Menu
- 18 - Main Menu Features
- 19 User Settings
- 19 - Menu Settings

## 23 TROUBLESHOOTING

---

## 25 SPECIFICATIONS

---

- 25 29UM59A
- 26 Factory Support Mode (Preset Mode, PC)
- 26 HDMI / USB-C
- 26 HDMI / USB-C Timing (Video)
- 26 Power LED

# LICENSE

Each model has different licenses. Visit [www.lg.com](http://www.lg.com) for more information on the license.



The terms HDMI and HDMI High-Definition Multimedia Interface, and the HDMI logo are trademarks or registered trademarks of HDMI Licensing LLC in the United States and other countries.

The following content is only applied to the monitor which is sold in Europe market and which needs to meet the ErP Directive:

\* This monitor is set to be turned off automatically in 4 hours after you turned on display if there is no adjustment to display.

\* To make this setting be disabled, change the option to 'Off' in OSD menu of "Automatic Standby".

# ASSEMBLING AND PREPARING

## Product Components

Please check whether all the components are included in the box before using the product. If there are missing components, contact the retail store where you purchased the product. Note that the product and components may look different from those shown here.



**CD(Owner's Manual) /  
Card**



**Power Cord**

( Depending on the country )



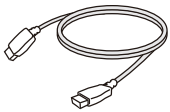
**AC-DC Adapter**

or



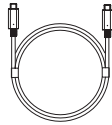
**AC-DC Adapter**

( Depending on the country )



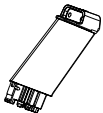
**HDMI Cable**

( This cable is not included  
in all countries. )



**USB C-C cable**

( This cable is not included  
in all countries. )



**Stand Body**



**Stand Base**



**Cable Holder**



**Screw Cover**



**2 Screws**



### CAUTION

- Always use genuine components to ensure safety and product performance.
- The product warranty will not cover damage or injury caused by the use of counterfeit components.
- It is recommend that use the supplied components.
- If you use generic cables not certified by LG, the screen may not display or there may be image noises.



### NOTE

- Note that the components may look different from those shown here.
- Without prior notice, all information and specifications in this manual are subject to change to improve the performance of the product.
- To purchase optional accessories, visit an electronics store or online shopping site or contact the retail store where you purchased the product.

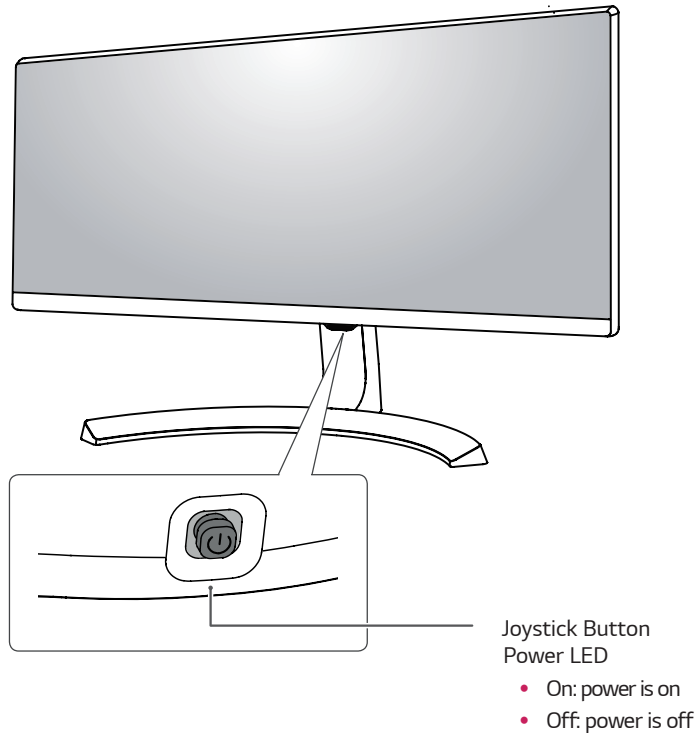
## Supported Drivers and Software

Check the drivers and software supported by your product and refer to the manuals on the CD enclosed in the product package.

| Drivers and Software | Installation Priority | 29UM59A |
|----------------------|-----------------------|---------|
| Monitor Driver       | Recommended           | 0       |
| OnScreen Control     | Recommended           | 0       |
| Dual Controller      | Optional              | 0       |

- Required and Recommended: You can download and install the latest version from the enclosed CD or from the LGE website ([www.lg.com](http://www.lg.com)).
- Optional: You can download and install the latest version from the LGE website ([www.lg.com](http://www.lg.com)).

## Component and Button Description



### How to Use the Joystick Button

You can easily control the functions of the monitor by pressing the joystick button or moving it left/right with your finger.

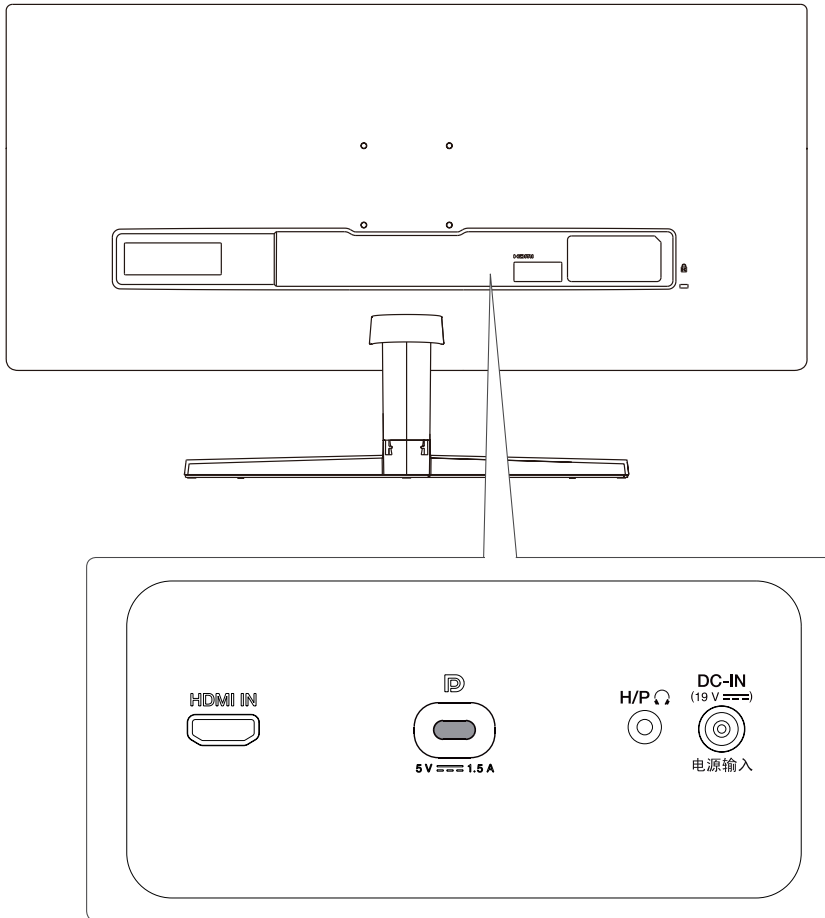
#### Basic Functions

|  |  |                       |                                                                                   |
|--|--|-----------------------|-----------------------------------------------------------------------------------|
|  |  | <b>Power on</b>       | Press the joystick button once with your finger to turn on the monitor.           |
|  |  | <b>Power off</b>      | Press and hold the joystick button once with your finger to turn off the monitor. |
|  |  | <b>Volume Control</b> | You can control the volume by moving the joystick button left/right.              |

#### NOTE

- The joystick button is located at the bottom of the monitor.

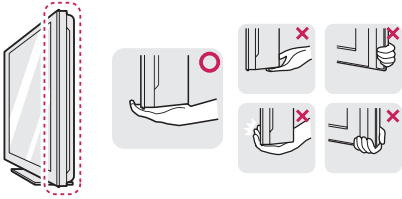
## Input Connector



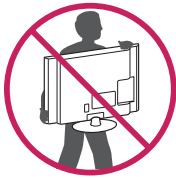
## Moving and Lifting the Monitor

When moving or lifting the monitor, follow these instructions to prevent the monitor from being scratched or damaged and to ensure safe transportation regardless of its shape or size.

- It is advisable to place the monitor in the original box or packing material before attempting to move it.
- Before moving or lifting the monitor, disconnect the power cord and all cables.
- Hold the top and bottom of the monitor frame firmly. Do not hold the screen itself.



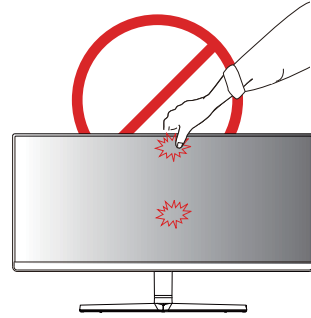
- When holding the monitor, the screen should face away from you to prevent it being scratched.



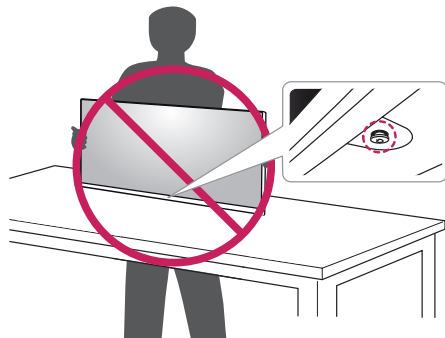
- When moving the monitor, avoid any strong shock or vibrations to the product.
- When moving the monitor, keep it upright, never turn the monitor on its side or tilt it sideways.

## ! CAUTION

- As far as possible, avoid touching the monitor screen. This may result in damage to the screen or some of the pixels used to create images.



- If you use the monitor panel without the stand base, its joystick button may cause the monitor to become unstable and fall, resulting in damage to the monitor or human injury. In addition, this may cause the joystick button to malfunction.

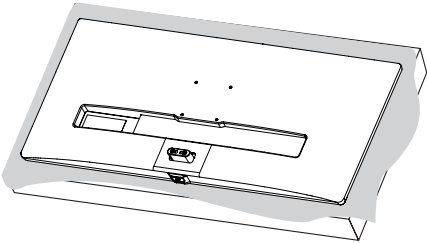




## Installing the Monitor

### Assembling the stand base

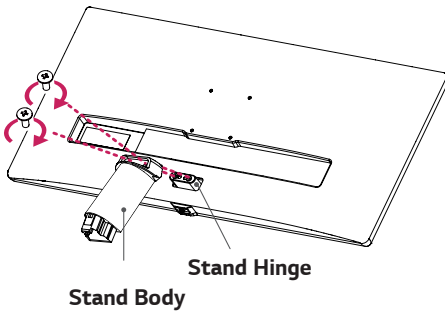
- 1 Place the screen face down.



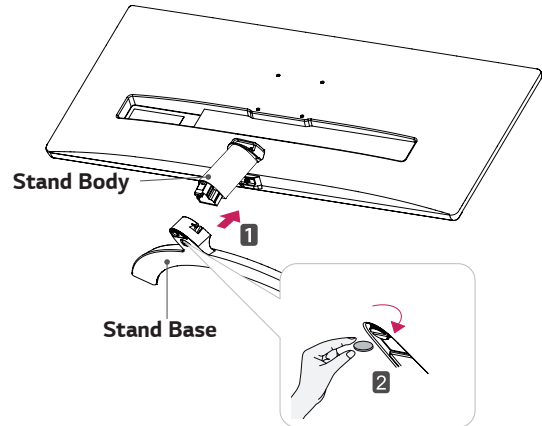
#### CAUTION

- To protect the screen from scratches, cover the surface with a soft cloth.

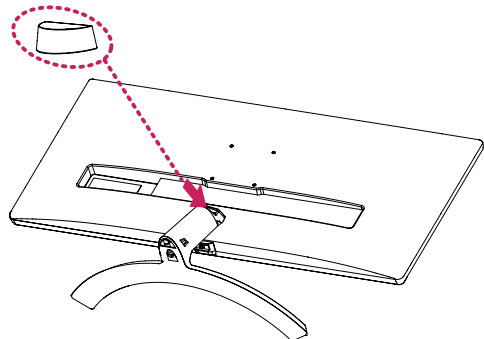
- 2 Check the direction of the **stand body** (front, back) and then mount the **stand body** onto the **stand hinge**.



- 3
  - 1 Attach the **Stand Base** to **Stand Body**.
  - 2 Tighten the screw to the right.



- 4 Attach the **screw cover**.



#### CAUTION

- Applying excessive force when tightening the screws may cause damage to the monitor. Damage caused in this way will not be covered by the product warranty.

#### CAUTION

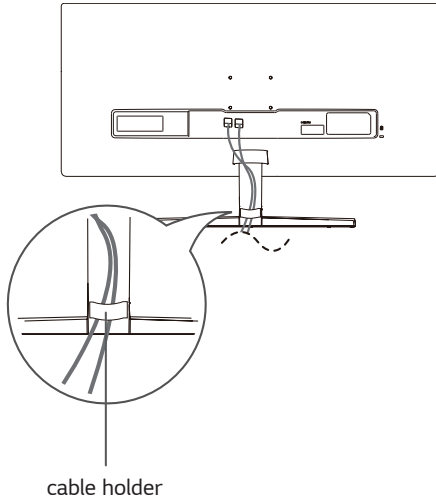
It may hurt your foot off the stand, so be careful.

#### NOTE

- You can disassemble the stand in the reverse order of the assembly.

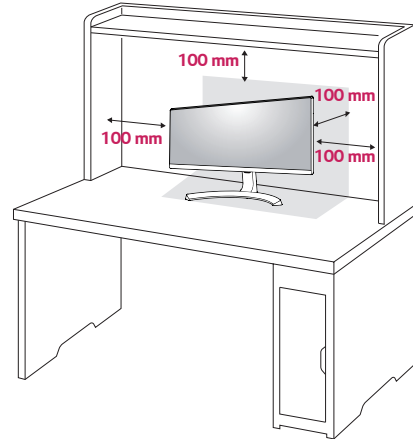
## Using the cable holder

Arrange the cables using the cable holder as shown in the illustration.

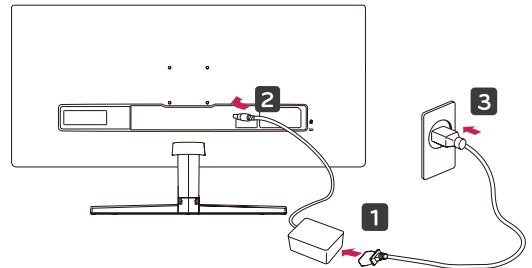
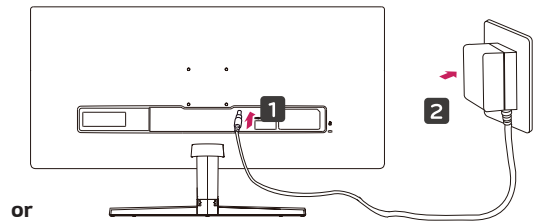


## Installing onto a table

- 1 Lift the monitor and place it on the table in an up-right position.  
Place at least **100 mm** away from the wall to ensure sufficient ventilation.



- 2 Connect the Power cord to the monitor, then plug the power cord into the wall outlet.

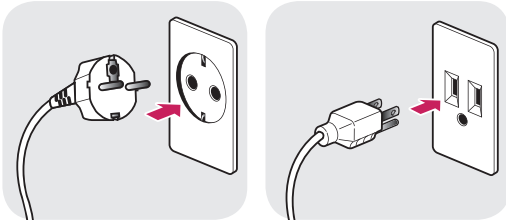


- 3 Press the joystick button on the bottom of the monitor to turn on the monitor.

### CAUTION

- Unplug the power cord prior to moving or installing the monitor. There is risk of electric shock.

## Cautions When Connecting Power Cord

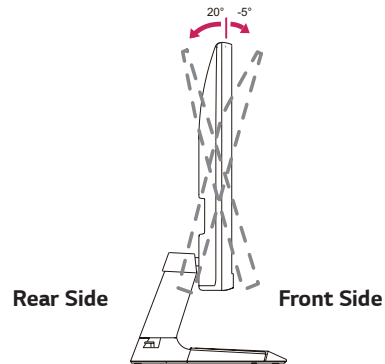


100-240 V~

- Make sure to use the power cord that is provided in the product package and connect it to a grounded power outlet.
- If you need another power cord, please contact your local dealer or the nearest retail store.

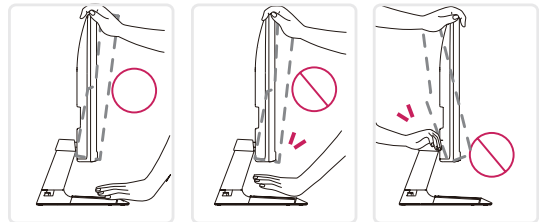
## Adjusting the angle

- 1 Place the monitor in an upright position, mounted on the stand base.
- 2 Adjust the angle of the screen. The angle of the screen can be adjusted forwards or backwards for a comfortable viewing experience.

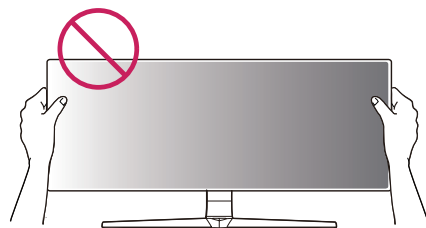


### ! WARNING

- To avoid injury to the fingers when adjusting the screen, do not hold the lower part of the monitor's frame as illustrated below.



- Be careful not to touch or press the screen area when adjusting the angle of the monitor.

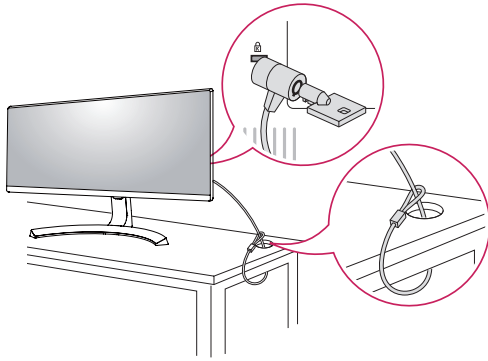


## Using the Kensington lock

The Kensington security system connector is located at the back of the Monitor set.

For more information on installation and usage, refer to the Kensington lock user manual or visit the website at <http://www.kensington.com>.

Connect the Kensington security system cable between the Monitor set and a table.

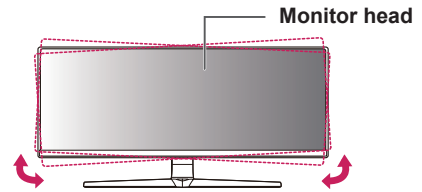


### ! NOTE

- Use of the Kensington lock is optional. The accessories can be purchased at your local electronics store.

### ! NOTE

- The left or right side of the monitor head can be slightly rotated up or down (up to 3°). Adjust the horizontal level of the monitor head.



## Installing the wall mount plate

This monitor supports the specification of the standard wall mount plate or compatible device.

- 1 Place the screen face down. To protect the screen from scratches, cover the surface with a soft cloth.
- 2 Place the wall mount plate onto the monitor and align it with the screw holes.
- 3 Tighten the four screws to fix the plate to the monitor using a screwdriver.

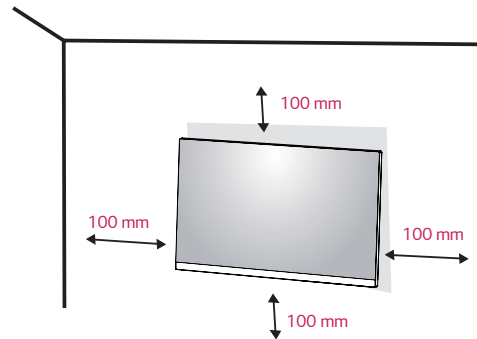


### NOTE

- The wall mount plate is sold separately.
- For more information on installation, refer to the wall mount plate's installation guide.
- Be careful not to use excessive force when mounting the wall mount plate, as this can damage the monitor's screen.

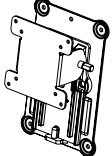
## Installing to a wall

Install the monitor at least 100 mm away from the wall and leave about 100 mm of space at each side of the monitor to ensure sufficient ventilation. Detailed installation instructions can be obtained from your local retail store. Please refer to the manual to install and set up a tilting wall mounting bracket.

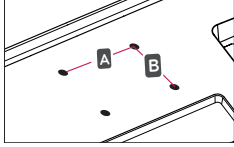


To install the monitor to a wall, attach a wall mounting bracket (optional) to the back of the monitor. Make sure that the wall mounting bracket is securely fixed to the monitor and to the wall.

- 1 If you use screw longer than standard, the monitor might be damaged internally.
- 2 If you use improper screw, the product might be damaged and drop from mounted position.  
In this case, LG Electronics is not responsible for it.

|                                    |                                                                                               |
|------------------------------------|-----------------------------------------------------------------------------------------------|
| <b>Wall Mount (A x B)</b>          | 75 x 75                                                                                       |
| <b>Standard screw</b>              | M4 x L10                                                                                      |
| <b>Number of screws</b>            | 4                                                                                             |
| <b>Wall Mount Plate (Optional)</b> | RW120<br> |

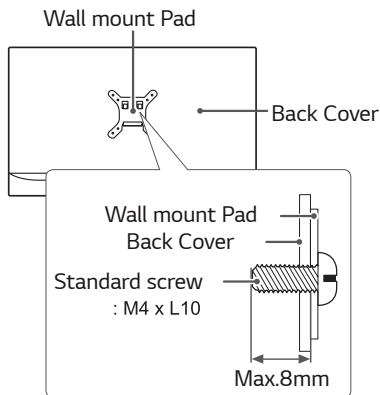
- Wall Mount (A x B)

**CAUTION**

- Unplug the power cord before moving or installing the monitor to avoid electric shocks.
- Installing the monitor on the ceiling or on a slanted wall may result in the monitor falling off, which could lead to injury. Please use the genuine LG wall mounting bracket. For more information, contact your local retail store or a qualified installer.
- Applying excessive force when fastening screws may cause damage to the monitor. Damage caused in this way will not be covered by the product warranty.
- Use the wall mounting bracket and screws that conform to the VESA standard. Damage caused by the use or misuse of inappropriate components will not be covered by the product warranty.
- Screw length from outer surface of back cover should be under 8mm.

**NOTE**

- Use the screws specified by the VESA standard.
- The wall mount kit includes the installation guide and all necessary parts.
- The wall mounting bracket is optional. The accessories can be purchased at your local retail store.
- The length of the screw may differ for each wall mounting bracket. Ensure the correct length screw is used.
- For more information, please refer to the user manual for the wall mounting bracket.



# USING THE MONITOR

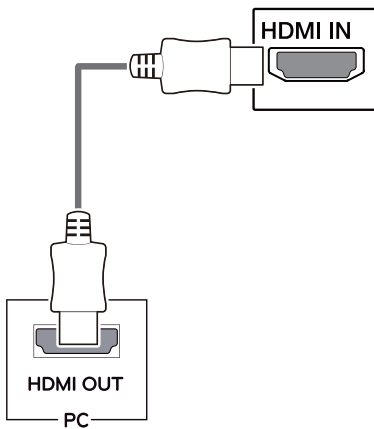
## Connecting to a PC

- This monitor supports the \*Plug and Play feature.  
\*Plug and Play: A feature that allows you to add a device to your computer without having to reconfigure anything or install any manual drivers.

### HDMI connection

Transmits the digital video and audio signals from your PC and A/V devices to the monitor. Connect your PC and AV device to the monitor with the HDMI cable as illustrated below.

Press the menu button and then select the input option from the input menu.



#### ! NOTE

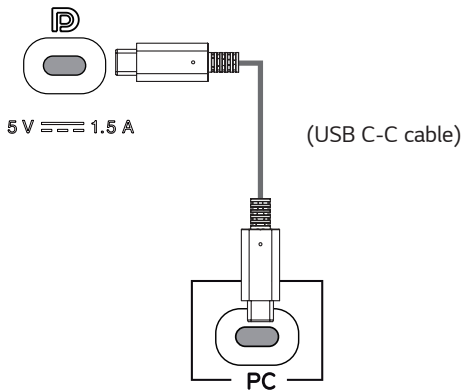
- If you use HDMI PC, it can cause compatibility problem.
- Use a certified cable with the HDMI logo attached.  
If you do not use a certified HDMI cable, the screen may not display or a connection error may occur.
- Recommended HDMI cable types
  - High-Speed HDMI<sup>®</sup>/™ Cable
  - High-Speed HDMI<sup>®</sup>/™ Cable with Ethernet

## USB-C connection

Transmits digital video and audio signals from your PC to the monitor.

Connect the monitor to your PC using the USB-C cable as shown in the illustration below.

Press the menu button and then select the input option from the input menu.



### ! NOTE

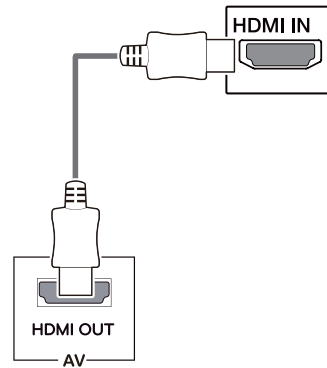
- DP Alternate Mode(DP over USB-C) are supported via USB-C Port.
- Features may not work properly depending on the connected device's specifications and the environment.
- USB-C port doesn't provide power to the Monitor. Use the Adapter supplied with the Monitor.

## Connecting to AV Devices

### HDMI connection

Transmits the digital video and audio signals from your PC and A/V devices to the monitor. Connect your PC and AV device to the monitor with the HDMI cable as illustrated below.

Press the menu button and then select the input option from the input menu.



### ! NOTE

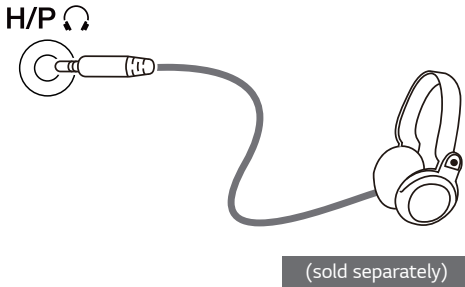
- Use a certified cable with the HDMI logo attached. If you do not use a certified HDMI cable, the screen may not display or a connection error may occur.
- Recommended HDMI cable types
  - High-Speed HDMI<sup>®</sup>/TM Cable
  - High-Speed HDMI<sup>®</sup>/TM Cable with Ethernet



## Connecting to External Devices

### Connecting Headphones

Connect peripherals to the monitor via the headphones port. Connect as illustrated.

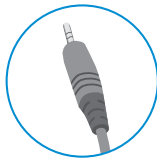


#### ! NOTE

- Peripheral devices are sold separately.
- If you use angled earphones, it may cause a problem with connecting another external device to the monitor. Therefore, it is recommended to use straight earphones.



Angled



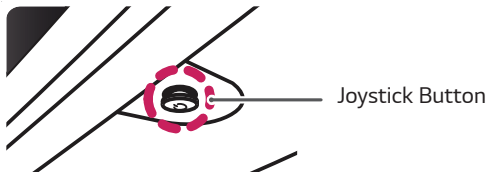
Straight




- Depending on the audio settings of the PC and external device, headphones and speaker functions may be limited.

# USER SETTINGS

## Activating the Main Menu

- 1 Press the joystick button on the bottom of the monitor.
- 2 Move the joystick up/down (▲/▼) and left/right(◀/▶) to set the options.
- 3 Press the joystick button once more to exit the main menu.



| Button                                                                              | Menu Status                 | Description                                                                                                                                                 |
|-------------------------------------------------------------------------------------|-----------------------------|-------------------------------------------------------------------------------------------------------------------------------------------------------------|
|    | <b>Main menu disabled</b>   | Enables the main menu.                                                                                                                                      |
|                                                                                     | <b>Main menu enabled</b>    | Exits the main menu.<br>(Holding down the button to turn off the monitor. You can turn off the monitor this way at any time, including when the OSD is on.) |
|   | ◀ <b>Main menu disabled</b> | Adjusts the monitor volume level.                                                                                                                           |
|                                                                                     | ◀ <b>Main menu enabled</b>  | Enters the <b>Input</b> feature.                                                                                                                            |
|                                                                                     | ▶ <b>Main menu disabled</b> | Adjusts the monitor volume level.                                                                                                                           |
|                                                                                     | ▶ <b>Main menu enabled</b>  | Enters the <b>Menu</b> features.                                                                                                                            |
|  | ▲ <b>Main menu disabled</b> | Displays information on the current input.                                                                                                                  |
|                                                                                     | ▲ <b>Main menu enabled</b>  | Turns off the monitor.                                                                                                                                      |
|                                                                                     | ▼ <b>Main menu disabled</b> | Displays information on the current input.                                                                                                                  |
|                                                                                     | ▼ <b>Main menu enabled</b>  | Enters the <b>Game Mode</b> features.                                                                                                                       |

## Main Menu Features



| Main Menu        | Description                                   |
|------------------|-----------------------------------------------|
| <b>Menu</b>      | Configures the screen settings.               |
| <b>Game Mode</b> | You can change Picture Mode to a gaming mode. |
| <b>Input</b>     | Sets input mode.                              |
| <b>Power Off</b> | Turns off the monitor.                        |
| <b>Exit</b>      | Exits the main menu.                          |

## User Settings

### Menu Settings

- To view the OSD menu, press the joystick button at the bottom of the monitor and then enter the Menu.
- Configure the options by moving the joystick up/down/left/right.
- To return to the upper menu or set other menu items, move the joystick to ◀ or pressing (⊙ / Ok) it.
- If you want to exit the OSD menu, move the joystick to ◀ until you exit.
  - When you enter the menu, instructions on how to use the button will appear in the bottom right corner of the screen.



Quick Settings



Input



Picture




General




#### CAUTION




- Your monitor's OSD (On Screen Display) may differ slightly from that shown in this manual.

Each option is described below.



| Menu > Quick Settings | Description                                                                                                                                                                                                                           |
|-----------------------|---------------------------------------------------------------------------------------------------------------------------------------------------------------------------------------------------------------------------------------|
| Brightness            | Adjusts the color contrast and brightness of the screen.                                                                                                                                                                              |
| Contrast              |                                                                                                                                                                                                                                       |
| Volume                | Adjusts the volume level.                                                                                                                                                                                                             |
|                       |  <b>NOTE</b> <ul style="list-style-type: none"> <li>You can adjust Mute / Unmute by moving the joystick button to ▼ in the Volume menu.</li> </ul> |

| Menu > Input | Description                                                                                                                                                                                                                                                                                                                                                                                                                                   |                                                                                                                   |
|--------------|-----------------------------------------------------------------------------------------------------------------------------------------------------------------------------------------------------------------------------------------------------------------------------------------------------------------------------------------------------------------------------------------------------------------------------------------------|-------------------------------------------------------------------------------------------------------------------|
| Input List   | Selects the input mode.                                                                                                                                                                                                                                                                                                                                                                                                                       |                                                                                                                   |
| Aspect Ratio | Adjusts the aspect ratio of the screen.                                                                                                                                                                                                                                                                                                                                                                                                       |                                                                                                                   |
|              | <b>Full Wide</b>                                                                                                                                                                                                                                                                                                                                                                                                                              | Displays the video in wide-screen, regardless of the video signal input.                                          |
|              | <b>Original</b>                                                                                                                                                                                                                                                                                                                                                                                                                               | Displays video according to the aspect ratio of the video signal input.                                           |
|              | <b>Cinema1</b>                                                                                                                                                                                                                                                                                                                                                                                                                                | Enlarges the screen with an aspect ratio of 21:9. (at 1080p)                                                      |
|              | <b>Cinema2</b>                                                                                                                                                                                                                                                                                                                                                                                                                                | Enlarges the screen with an aspect ratio of 21:9, including the black box at the bottom for subtitles. (at 1080p) |
|              |  <b>NOTE</b> <ul style="list-style-type: none"> <li>The display may look the same for Full Wide , Original at the recommended resolution (2560×1080).</li> <li>There is no <b>Cinema1</b>, <b>Cinema2</b> menu on <b>FreeSync</b> Mode. ( Go to <b>Picture</b> → <b>Game Adjust</b> → <b>FreeSync</b>, to set <b>FreeSync On</b> or <b>Off</b>)</li> </ul> |                                                                                                                   |

| Menu > Picture | Description   |                                                                                          |
|----------------|---------------|------------------------------------------------------------------------------------------|
| Picture Mode   | <b>Custom</b> | Allows the user to adjust each element. The color mode of the main menu can be adjusted. |
|                | <b>Reader</b> | Optimizes the screen for viewing documents. You can brighten the screen in the OSD menu. |
|                | <b>Photo</b>  | Optimizes the screen for photos.                                                         |

|                |                                                                                                                                                                                                                                                                                                                                                                       |                                                                                                                                                                                                                                                                                                                                                                                                                                                                                                                  |                                                                                                                                                              |  |
|----------------|-----------------------------------------------------------------------------------------------------------------------------------------------------------------------------------------------------------------------------------------------------------------------------------------------------------------------------------------------------------------------|------------------------------------------------------------------------------------------------------------------------------------------------------------------------------------------------------------------------------------------------------------------------------------------------------------------------------------------------------------------------------------------------------------------------------------------------------------------------------------------------------------------|--------------------------------------------------------------------------------------------------------------------------------------------------------------|--|
| Picture Mode   | <b>Cinema</b>                                                                                                                                                                                                                                                                                                                                                         | Optimizes the screen for video.                                                                                                                                                                                                                                                                                                                                                                                                                                                                                  |                                                                                                                                                              |  |
|                | <b>Color Weakness</b>                                                                                                                                                                                                                                                                                                                                                 | This mode is for users who cannot distinguish between red and green. It enables users with color weakness to easily distinguish between the two colors.                                                                                                                                                                                                                                                                                                                                                          |                                                                                                                                                              |  |
|                | <b>FPS Game 1</b>                                                                                                                                                                                                                                                                                                                                                     | This mode is optimized for FPS games.                                                                                                                                                                                                                                                                                                                                                                                                                                                                            |                                                                                                                                                              |  |
|                | <b>FPS Game 2</b>                                                                                                                                                                                                                                                                                                                                                     | It has a higher Black Stabilizer value than FPS Game 1. It is suitable for very dark FPS games.                                                                                                                                                                                                                                                                                                                                                                                                                  |                                                                                                                                                              |  |
|                | <b>RTS Game</b>                                                                                                                                                                                                                                                                                                                                                       | This mode is optimized for RTS Game.                                                                                                                                                                                                                                                                                                                                                                                                                                                                             |                                                                                                                                                              |  |
|                | <b>Custom (Game)</b>                                                                                                                                                                                                                                                                                                                                                  | In this mode, users can customize various elements including game-related options.                                                                                                                                                                                                                                                                                                                                                                                                                               |                                                                                                                                                              |  |
|                |  <b>NOTE</b> <ul style="list-style-type: none"> <li>If the picture mode is changed in the screen may flicker or the resolution of your PC screen may be affected.</li> </ul>                                                                                                         |                                                                                                                                                                                                                                                                                                                                                                                                                                                                                                                  |                                                                                                                                                              |  |
| Picture Adjust | <b>Brightness</b>                                                                                                                                                                                                                                                                                                                                                     | Adjusts the brightness of the screen.                                                                                                                                                                                                                                                                                                                                                                                                                                                                            |                                                                                                                                                              |  |
|                | <b>Contrast</b>                                                                                                                                                                                                                                                                                                                                                       | Adjusts the contrast of the screen.                                                                                                                                                                                                                                                                                                                                                                                                                                                                              |                                                                                                                                                              |  |
|                | <b>Sharpness</b>                                                                                                                                                                                                                                                                                                                                                      | Adjusts the sharpness of the screen.                                                                                                                                                                                                                                                                                                                                                                                                                                                                             |                                                                                                                                                              |  |
|                | <b>SUPER RESOLUTION+</b>                                                                                                                                                                                                                                                                                                                                              | <b>High</b>                                                                                                                                                                                                                                                                                                                                                                                                                                                                                                      | Optimized picture quality is displayed when a user wants crystal clear images. It is effective for high quality video or game.                               |  |
|                |                                                                                                                                                                                                                                                                                                                                                                       | <b>Middle</b>                                                                                                                                                                                                                                                                                                                                                                                                                                                                                                    | The optimized picture quality is displayed when a user wants images between low and high modes for comfortable viewing. It is effective for UCC or SD video. |  |
|                |                                                                                                                                                                                                                                                                                                                                                                       | <b>Low</b>                                                                                                                                                                                                                                                                                                                                                                                                                                                                                                       | The optimized picture quality is displayed when a user wants smooth and natural images. It is effective for slow-moving pictures or still images.            |  |
|                |                                                                                                                                                                                                                                                                                                                                                                       | <b>Off</b>                                                                                                                                                                                                                                                                                                                                                                                                                                                                                                       | Select this option for everyday viewing. SUPER RESOLUTION+ is turned off in this mode.                                                                       |  |
|                |  <b>NOTE</b> <ul style="list-style-type: none"> <li>Because this is a function to increase the sharpness of low resolution pictures, it is not recommended to use the function for normal text or for desktop icons. Doing so may result in unnecessarily high sharpness.</li> </ul> |                                                                                                                                                                                                                                                                                                                                                                                                                                                                                                                  |                                                                                                                                                              |  |
|                | <b>Black Level</b>                                                                                                                                                                                                                                                                                                                                                    | Sets the offset level (for HDMI only).                                                                                                                                                                                                                                                                                                                                                                                                                                                                           |                                                                                                                                                              |  |
|                |                                                                                                                                                                                                                                                                                                                                                                       | <ul style="list-style-type: none"> <li>Offset: as a reference for a video signal, this is the darkest color the monitor can display.</li> </ul>                                                                                                                                                                                                                                                                                                                                                                  |                                                                                                                                                              |  |
| <b>High</b>    |                                                                                                                                                                                                                                                                                                                                                                       | Keeps the current contrast ratio of the screen.                                                                                                                                                                                                                                                                                                                                                                                                                                                                  |                                                                                                                                                              |  |
|                | <b>Low</b>                                                                                                                                                                                                                                                                                                                                                            | Lowers the black levels and raises the white levels from the current contrast ratio of the screen.                                                                                                                                                                                                                                                                                                                                                                                                               |                                                                                                                                                              |  |
| <b>DFC</b>     | <b>On</b>                                                                                                                                                                                                                                                                                                                                                             | Adjusts the brightness automatically according to the screen.                                                                                                                                                                                                                                                                                                                                                                                                                                                    |                                                                                                                                                              |  |
|                | <b>Off</b>                                                                                                                                                                                                                                                                                                                                                            | Disables the <b>DFC</b> feature.                                                                                                                                                                                                                                                                                                                                                                                                                                                                                 |                                                                                                                                                              |  |
| Game Adjust    | <b>Response Time</b>                                                                                                                                                                                                                                                                                                                                                  | Sets a response time for displayed pictures based on the speed of the screen. For a normal environment, it is recommended that you use <b>Normal</b> . For a fast-moving picture, it is recommended that you use <b>Fast</b> . Setting to <b>Fast</b> may cause image sticking.                                                                                                                                                                                                                                  |                                                                                                                                                              |  |
|                |                                                                                                                                                                                                                                                                                                                                                                       | <b>Fast</b>                                                                                                                                                                                                                                                                                                                                                                                                                                                                                                      | Sets the response time to Fast.                                                                                                                              |  |
|                |                                                                                                                                                                                                                                                                                                                                                                       | <b>Normal</b>                                                                                                                                                                                                                                                                                                                                                                                                                                                                                                    | Sets the response time to Normal.                                                                                                                            |  |
|                |                                                                                                                                                                                                                                                                                                                                                                       | <b>Slow</b>                                                                                                                                                                                                                                                                                                                                                                                                                                                                                                      | Sets the response time to Slow.                                                                                                                              |  |
|                |                                                                                                                                                                                                                                                                                                                                                                       | <b>Off</b>                                                                                                                                                                                                                                                                                                                                                                                                                                                                                                       | Does not use the response time improvement feature.                                                                                                          |  |
|                | <b>FreeSync</b>                                                                                                                                                                                                                                                                                                                                                       | Provides seamless and natural images by synchronizing the vertical frequency of the input signal with that of the output signal.                                                                                                                                                                                                                                                                                                                                                                                 |                                                                                                                                                              |  |
|                |                                                                                                                                                                                                                                                                                                                                                                       |  <b>CAUTION</b> <ul style="list-style-type: none"> <li>Supported Interface: HDMI.</li> <li>Supported Graphic Card : A graphic card that supports AMD's FreeSync is necessary.</li> <li>Supported Version : Make sure to update the graphic card to the latest driver.</li> <li>For more information and requirement, refer to AMD website at <a href="http://www.amd.com/FreeSync">http://www.amd.com/FreeSync</a></li> </ul> |                                                                                                                                                              |  |
| <b>On</b>      |                                                                                                                                                                                                                                                                                                                                                                       | <b>FreeSync</b> function on.                                                                                                                                                                                                                                                                                                                                                                                                                                                                                     |                                                                                                                                                              |  |
|                | <b>Off</b>                                                                                                                                                                                                                                                                                                                                                            | <b>FreeSync</b> function off.                                                                                                                                                                                                                                                                                                                                                                                                                                                                                    |                                                                                                                                                              |  |

|                      |                                                                                                                                                                         |                                                                                                                                                                                                                                                                                                                                                                                    |                                                                                                                               |  |
|----------------------|-------------------------------------------------------------------------------------------------------------------------------------------------------------------------|------------------------------------------------------------------------------------------------------------------------------------------------------------------------------------------------------------------------------------------------------------------------------------------------------------------------------------------------------------------------------------|-------------------------------------------------------------------------------------------------------------------------------|--|
| <b>Game Adjust</b>   | <b>Black Stabilizer</b>                                                                                                                                                 | You can control the black contrast to have better visibility in dark scenes. Increasing the <b>Black Stabilizer</b> value brightens the low gray level area on the screen. (You can easily distinguish objects on dark game screens.) Reducing the <b>Black Stabilizer</b> value darkens the low gray level area and increases the dynamic contrast on the screen.                 |                                                                                                                               |  |
|                      | <b>Cross Hair</b>                                                                                                                                                       | Cross Hair provides a mark on the center of the screen for First Person Shooter(FPS) games. Users can select the <b>cross hair</b> that fits their gaming environment among four different <b>cross hairs</b> . <ul style="list-style-type: none"> <li>When the monitor is off or enters energy saving mode, the Cross Hair feature is automatically turned <b>Off</b>.</li> </ul> |                                                                                                                               |  |
| <b>Color Adjust</b>  | <b>Gamma</b>                                                                                                                                                            | <b>Mode 1, Mode 2, Mode 3</b>                                                                                                                                                                                                                                                                                                                                                      | The higher the gamma value, the darker the image becomes. Likewise, the lower the gamma value, the lighter the image becomes. |  |
|                      |                                                                                                                                                                         | <b>Mode 4</b>                                                                                                                                                                                                                                                                                                                                                                      | If you do not need to adjust the gamma settings, select Mode 4.                                                               |  |
|                      |                                                                                                                                                                         |                                                                                                                                                                                                                                                                                                                                                                                    |                                                                                                                               |  |
|                      | <b>Color Temp</b>                                                                                                                                                       | <b>Custom</b>                                                                                                                                                                                                                                                                                                                                                                      | The user can adjust it to red, green, or blue by customization.                                                               |  |
|                      |                                                                                                                                                                         | <b>Warm</b>                                                                                                                                                                                                                                                                                                                                                                        | Sets the screen color to a reddish tone.                                                                                      |  |
|                      |                                                                                                                                                                         | <b>Medium</b>                                                                                                                                                                                                                                                                                                                                                                      | Sets the screen color between a red and blue tone.                                                                            |  |
|                      |                                                                                                                                                                         | <b>Cool</b>                                                                                                                                                                                                                                                                                                                                                                        | Sets the screen color to a bluish tone.                                                                                       |  |
|                      | <b>Red</b>                                                                                                                                                              | You can customize the picture color using <b>Red, Green, and Blue</b> colors.                                                                                                                                                                                                                                                                                                      |                                                                                                                               |  |
|                      | <b>Green</b>                                                                                                                                                            |                                                                                                                                                                                                                                                                                                                                                                                    |                                                                                                                               |  |
|                      | <b>Blue</b>                                                                                                                                                             |                                                                                                                                                                                                                                                                                                                                                                                    |                                                                                                                               |  |
| <b>Six Color</b>     | Meets the user requirements for colors by adjusting the hue and saturation of the six colors (Red, Green, Blue, Cyan, Magenta and Yellow) and then saving the settings. |                                                                                                                                                                                                                                                                                                                                                                                    |                                                                                                                               |  |
|                      | <b>Hue</b>                                                                                                                                                              | Adjusts the tone of the screen colors.                                                                                                                                                                                                                                                                                                                                             |                                                                                                                               |  |
|                      | <b>Saturation</b>                                                                                                                                                       | Adjusts the saturation of the screen colors. The lower the value, the less saturated and brighter the colors become. The higher the value, the more saturated and darker the colors become.                                                                                                                                                                                        |                                                                                                                               |  |
| <b>Picture Reset</b> | <b>Do you want to reset your settings?</b>                                                                                                                              |                                                                                                                                                                                                                                                                                                                                                                                    |                                                                                                                               |  |
|                      | <b>Yes</b>                                                                                                                                                              | Reset                                                                                                                                                                                                                                                                                                                                                                              |                                                                                                                               |  |
|                      | <b>No</b>                                                                                                                                                               | Cancel                                                                                                                                                                                                                                                                                                                                                                             |                                                                                                                               |  |

| Menu > General             | Description                                                                                                                                                                                                                                                                                                                               |                                                                     |
|----------------------------|-------------------------------------------------------------------------------------------------------------------------------------------------------------------------------------------------------------------------------------------------------------------------------------------------------------------------------------------|---------------------------------------------------------------------|
| <b>Language</b>            | Sets the menu screen to the desired language.                                                                                                                                                                                                                                                                                             |                                                                     |
| <b>SMART ENERGY SAVING</b> | <b>High</b>                                                                                                                                                                                                                                                                                                                               | Saves energy using the high-efficiency SMART ENERGY SAVING feature. |
|                            | <b>Low</b>                                                                                                                                                                                                                                                                                                                                | Saves energy using the low-efficiency SMART ENERGY SAVING feature.  |
|                            | <b>Off</b>                                                                                                                                                                                                                                                                                                                                | Disables the SMART ENERGY SAVING feature.                           |
| <b>Power LED</b>           | Turns the power LED on the front of the monitor on.                                                                                                                                                                                                                                                                                       |                                                                     |
|                            | <b>On</b>                                                                                                                                                                                                                                                                                                                                 | The power LED turns on.                                             |
|                            | <b>Off</b>                                                                                                                                                                                                                                                                                                                                | The power LED turns off.                                            |
| <b>Automatic Standby</b>   | Feature that automatically turns off the monitor when there is no movement on the screen for a period of time. You can set a timer for the auto-off function. (Off, 4 H, 6 H, and 8 H)                                                                                                                                                    |                                                                     |
| <b>DisplayPort 1.2</b>     | Enables or disables DisplayPort 1.2.                                                                                                                                                                                                                                                                                                      |                                                                     |
|                            |  <b>NOTE</b> <ul style="list-style-type: none"> <li>Be sure to configure this option according to the DisplayPort version supported by your graphics card. Set this option to Disable if your graphics card does not support DisplayPort 1.2.</li> </ul> |                                                                     |
| <b>OSD Lock</b>            | This feature disables the configuration and adjustment of menus.                                                                                                                                                                                                                                                                          |                                                                     |
|                            | <b>On</b>                                                                                                                                                                                                                                                                                                                                 | Enables OSD Lock.                                                   |
|                            | <b>Off</b>                                                                                                                                                                                                                                                                                                                                | Disables OSD Lock.                                                  |
|                            |  <b>NOTE</b> <ul style="list-style-type: none"> <li>All features are disabled except Brightness, Contrast, Volume, Input, OSD Lock in General and the Exit button.</li> </ul>                                                                            |                                                                     |
| <b>Reset</b>               | <b>Do you want to reset your settings?</b>                                                                                                                                                                                                                                                                                                |                                                                     |
|                            | <b>No</b>                                                                                                                                                                                                                                                                                                                                 | Cancel the select.                                                  |
|                            | <b>Yes</b>                                                                                                                                                                                                                                                                                                                                | Returns to the default settings.                                    |

 **NOTE**

- Saving Data depends on the Panel. So, those values should be different from each panel and panel vendor. If option of SMART ENERGY SAVING is High or Low, monitor luminance become higher or lower depend on source.

# TROUBLESHOOTING

## Nothing is displayed on the screen.

|                                                     |                                                                                                                                                                                                                                                                                          |
|-----------------------------------------------------|------------------------------------------------------------------------------------------------------------------------------------------------------------------------------------------------------------------------------------------------------------------------------------------|
| Is the monitor's power cord plugged in?             | <ul style="list-style-type: none"> <li>• Check if the power cord is correctly plugged into the power outlet.</li> </ul>                                                                                                                                                                  |
| Is the power LED on?                                | <ul style="list-style-type: none"> <li>• Check the power cable connection and press the power button.</li> </ul>                                                                                                                                                                         |
| Is the power on and the power LED displaying white? | <ul style="list-style-type: none"> <li>• Check that the connected input is enabled (Menu &gt; Input &gt; Input list).</li> </ul>                                                                                                                                                         |
| Is the power LED blinking?                          | <ul style="list-style-type: none"> <li>• If the monitor is in sleep mode, move the mouse, or press any key on the keyboard, to switch the display on.</li> <li>• Check if the computer is turned on.</li> </ul>                                                                          |
| Is the OUT OF RANGE message being displayed?        | <ul style="list-style-type: none"> <li>• This occurs when signals transferred from the PC (graphics card) are out of the horizontal or vertical frequency range of the monitor. Please see the Product Specification section of this manual to set the appropriate frequency.</li> </ul> |
| Is the No Signal message being displayed?           | <ul style="list-style-type: none"> <li>• This is displayed when the signal cable between the PC and the monitor is missing or disconnected. Check the cable and reconnect it.</li> </ul>                                                                                                 |

## The OSD lock message is being displayed.

|                                                                  |                                                                                                                         |
|------------------------------------------------------------------|-------------------------------------------------------------------------------------------------------------------------|
| Are some functions not available when you press the Menu button? | <ul style="list-style-type: none"> <li>• The OSD is locked. Go to Menu &gt; General and set OSD Lock to Off.</li> </ul> |
|------------------------------------------------------------------|-------------------------------------------------------------------------------------------------------------------------|

## The screen retains an image.

|                                                                |                                                                                                                                                                                                                                                 |
|----------------------------------------------------------------|-------------------------------------------------------------------------------------------------------------------------------------------------------------------------------------------------------------------------------------------------|
| Does image sticking occur even when the monitor is turned off? | <ul style="list-style-type: none"> <li>• Displaying a still image for a prolonged time may cause damage to the screen, resulting in the retention of the image.</li> <li>• To extend the lifetime of the monitor, use a screensaver.</li> </ul> |
|----------------------------------------------------------------|-------------------------------------------------------------------------------------------------------------------------------------------------------------------------------------------------------------------------------------------------|

## Screen display is unstable and shaky / Images displayed on the monitor leave shadow trails.

|                                            |                                                                                                                                                                                                                 |
|--------------------------------------------|-----------------------------------------------------------------------------------------------------------------------------------------------------------------------------------------------------------------|
| Did you select the appropriate resolution? | <ul style="list-style-type: none"> <li>• If the selected resolution is HDMI 1080i 60/50 Hz (interlaced), the screen may be flickering. Change the resolution to 1080P or the recommended resolution.</li> </ul> |
|--------------------------------------------|-----------------------------------------------------------------------------------------------------------------------------------------------------------------------------------------------------------------|

### NOTE

- **Vertical frequency** In order to display an image, the screen must be refreshed dozens of times per second, like a fluorescent lamp. The number of times the screen is refreshed per second is called vertical frequency, or refresh rate, and is represented by Hz.
- **Horizontal frequency** The time it takes to display one horizontal line is called the horizontal cycle. If 1 is divided by the horizontal interval, the result is the number of horizontal lines displayed per second. This is called horizontal frequency and is represented by kHz.

**NOTE**

- Check if the graphics card's resolution or frequency is within the range allowed by the monitor and set it to the recommended (optimal) resolution in **Control Panel > Display > settings**.
- Not setting the graphics card to the recommended (optimal) resolution may result in blurred text, a dimmed screen, a truncated display area, or misalignment of the display.
- The setting methods may be different depending on the computer or operating system, and some resolutions may not be available depending on the performance of the graphics card. If this is the case, contact the manufacturer of the computer or graphics card for assistance.
- Some graphics cards may not support 2560×1080 resolution. If the resolution cannot be displayed, contact the manufacturer of your graphics card.

| <b>The display color is abnormal.</b>                 |                                                                                                                                                                                                                                                                 |
|-------------------------------------------------------|-----------------------------------------------------------------------------------------------------------------------------------------------------------------------------------------------------------------------------------------------------------------|
| Does the display appear discolored (16 colors)?       | <ul style="list-style-type: none"> <li>• Set the color to 24 bit (true color) or higher. In Windows, go to Control Panel &gt; Display &gt; Settings &gt; Color Quality.</li> </ul>                                                                              |
| Does the display color appear unstable or monochrome? | <ul style="list-style-type: none"> <li>• Check if the signal cable is connected properly. Reconnect the cable or reinsert the PC's graphics card.</li> </ul>                                                                                                    |
| Are there spots on the screen?                        | <ul style="list-style-type: none"> <li>• When using the monitor, pixilated spots (red, green, blue, white, or black) may appear on the screen. This is normal for an LCD screen. It is not an error, nor is it related to the monitor's performance.</li> </ul> |

| <b>Do you see an "Unrecognized monitor, Plug&amp;Play (VESA DDC) monitor found" message?</b> |                                                                                                                                                                                                                                                                                                                                                              |
|----------------------------------------------------------------------------------------------|--------------------------------------------------------------------------------------------------------------------------------------------------------------------------------------------------------------------------------------------------------------------------------------------------------------------------------------------------------------|
| Have you installed the display driver?                                                       | <ul style="list-style-type: none"> <li>• Be sure to install the display driver from the display driver CD (or diskette) that comes with your display. Or, you can also download the driver from our web site: <a href="http://www.lg.com">http://www.lg.com</a>.</li> <li>• Make sure to check if the video card supports Plug&amp;Play function.</li> </ul> |

| <b>No sound from the headphone port or speaker.</b>                 |                                                                                                                                                                                                                                                                                                             |
|---------------------------------------------------------------------|-------------------------------------------------------------------------------------------------------------------------------------------------------------------------------------------------------------------------------------------------------------------------------------------------------------|
| Are images displayed using DisplayPort or HDMI input without sound? | <ul style="list-style-type: none"> <li>• Try increasing the volume using the button on the monitor.</li> <li>• Set the audio output of the PC to the monitor you are using. On Microsoft Windows, go to Control Panel &gt; Hardware and Sound &gt; Sound &gt; set the monitor as default device.</li> </ul> |



# SPECIFICATIONS

## 29UM59A

|                            |                                                                                                                                                                                                                             |                                                                   |
|----------------------------|-----------------------------------------------------------------------------------------------------------------------------------------------------------------------------------------------------------------------------|-------------------------------------------------------------------|
| LCD Screen                 | Type                                                                                                                                                                                                                        | TFT (Thin Film Transistor)<br>LCD (Liquid Crystal Display) Screen |
|                            | Pixel Pitch                                                                                                                                                                                                                 | 0.0876 mm x 0.2628 mm                                             |
| Resolution                 | Maximum Resolution                                                                                                                                                                                                          | 2560×1080 @ 75 Hz                                                 |
|                            | Recommended Resolution                                                                                                                                                                                                      | 2560×1080 @ 60 Hz                                                 |
| Video Signal               | Horizontal Frequency                                                                                                                                                                                                        | 30 kHz to 90 kHz                                                  |
|                            | Vertical Frequency                                                                                                                                                                                                          | 56 Hz to 75 Hz                                                    |
| Input Connector            | HDMI IN, H/P, USB-C                                                                                                                                                                                                         |                                                                   |
| Power input                | 19 V --- 2.0 A                                                                                                                                                                                                              |                                                                   |
| Power consumption (Typ.)   | On mode: 23.3 W Typ. (ENERGY STAR® standard)*<br>27 W Typ. (Outgoing condition)**<br>Sleep Mode ≤ 0.5 W<br>Off Mode ≤ 0.3 W                                                                                                 |                                                                   |
| AC/DC adaptor              | Type ADS-45SN-19-3 19040G, SHENZHEN HONOR ELECTRONIC production<br>Or type LCAP21C, LIEN CHANG ELECTRONIC ENTERPRISE production<br>Or type LCAP26B-E, LIEN CHANG ELECTRONIC ENTERPRISE production<br>Output: 19 V --- 2.1 A |                                                                   |
| Environmental Conditions   | Operating Condition                                                                                                                                                                                                         | Temperature: 0°C to 40°C; Humidity: < 80%                         |
|                            | Storing Condition                                                                                                                                                                                                           | Temperature: -20°C to 60°C; Humidity: < 85%                       |
| Dimension                  | Monitor Size (Width x Height x Depth)                                                                                                                                                                                       |                                                                   |
|                            | With Stand                                                                                                                                                                                                                  | 702.5 mm x 414 mm x 204.7 mm                                      |
|                            | Without Stand                                                                                                                                                                                                               | 702.5 mm x 328.4 mm x 63.8 mm                                     |
| Weight (Without Packaging) | With Stand                                                                                                                                                                                                                  | 5.4 kg                                                            |
|                            | Without Stand                                                                                                                                                                                                               | 4.8 kg                                                            |

The specifications are subject to change without notice.

\* The power consumption level can be different by operating condition and monitor setting.

\* The On mode power consumption is measured with ENERGY STAR® test standard.

\*\* The On mode power consumption is measured with LGE test standard (Full White pattern , Maximum resolution).

## Factory Support Mode (Preset Mode, PC)

### HDMI / USB-C

| Resolution (HDMI / USB-C) | Horizontal Frequency(kHz) | Vertical Frequency(Hz) | Polarity(H/V) | Remarks |
|---------------------------|---------------------------|------------------------|---------------|---------|
| 640 x 480                 | 31.469                    | 59.94                  | -/-           |         |
| 640 x 480                 | 37.5                      | 75                     | -/-           |         |
| 800 x 600                 | 37.879                    | 60.317                 | +/+           |         |
| 800 x 600                 | 46.875                    | 75                     | +/+           |         |
| 1024 x 768                | 48.363                    | 60                     | -/-           |         |
| 1024 x 768                | 60.123                    | 75.029                 | +/+           |         |
| 1152 x 864                | 67.5                      | 60                     | +/+           |         |
| 1280 x 720                | 45                        | 60                     | +/+           |         |
| 1280 x 1024               | 63.981                    | 60.02                  | +/+           |         |
| 1600 x 900                | 60                        | 60                     | +/+           |         |
| 1680 x 1050               | 65.29                     | 59.954                 | -/+           |         |
| 1920 x 1080               | 67.5                      | 60                     | +/-           |         |
| 2560 x 1080               | 66.7                      | 60                     | +/-           |         |
| 2560 x 1080               | 86.79                     | 74.94                  | +/-           |         |

### HDMI / USB-C Timing (Video)

| Factory support mode (Preset Mode) | Horizontal Frequency(kHz) | Vertical Frequency(Hz) | Remarks |
|------------------------------------|---------------------------|------------------------|---------|
| 480p                               | 31.5                      | 60                     |         |
| 576P                               | 31.25                     | 50                     |         |
| 720p                               | 37.5                      | 50                     |         |
| 720p                               | 45.0                      | 60                     |         |
| 1080p                              | 56.25                     | 50                     |         |
| 1080p                              | 67.5                      | 60                     |         |

### Power LED

| Mode       | LED Color |
|------------|-----------|
| On Mode    | White     |
| Sleep Mode | Off       |
| Off Mode   | Off       |



**Declaration of Conformity**

Trade Name: LG

Model : 29UM59A

Responsible Party: LG Electronics Inc.

Address : 1000 Sylvan Ave. Englewood Cliffs

NJ 07632 U.S.A

TEL: 201-266-2534

\*above information is only for USA FCC Regulatory

This device meets the EMC requirements for home appliances (Class B) and is intended for home usage. This device can be used in all regions. Read the owner's manual (CD) carefully and keep it at hand. Please note that the label attached to the product provides information for technical support.

**MODEL** \_\_\_\_\_

**SERIAL** \_\_\_\_\_

ENERGY STAR is a set of power-saving guidelines issued by the U.S.Environmental Protection Agency(EPA).



As an ENERGY STAR Partner LGE U. S. A.,Inc. has determined that this product meets the ENERGY STAR guidelines for energy efficiency.

Refer to ENERGY STAR.gov for more information on the ENERGY STAR program.