



EN

PORTABLE AIR CONDITIONER (LOCAL)

relax



OPERATING INSTRUCTIONS

Read the instructions carefully before operating the appliance or carrying out maintenance work. Observe all the safety instructions; failure to observe the instructions may lead to accidents and/or damage. Keep these instructions in a safe place for future reference.

GENERAL OPERATING AND SAFETY INSTRUCTIONS

- This appliance is a portable air conditioner, designed for domestic use.
- Only use this air conditioner as described in this manual.
- Ensure that the required voltage and frequency (220-240V/50Hz) match the available power source.
- Ensure that the electricity system is able to deliver the operating current needed by the air conditioner in addition to that normally absorbed by other appliances (electrical appliances, lighting, etc.). Please refer to the maximum absorption data given on the air conditioner data plate.
- Connection to the electricity grid must take place in accordance with current installation standards.
- Ensure that the automatic switches and system protection valves are able to withstand a start-up current of 7A (normally for less than 1 second).
- The system socket must always be fitted with an efficient earth.
- Make sure the plug is inserted fully. Do not use multiple adapters. Do not touch the plug with wet hands. Make sure the plug is clean.
- Do not use the plug as a means by which to start/stop the air conditioner: use the ON/OFF button on the remote control or on the control panel.
- Do not install the air conditioner in rooms that may be subject to water spray (e.g. laundries).
- This dehumidifier can be used by children of 8 years of age and upwards, and by persons with reduced physical, sensorial and mental capacity, or who are not familiar with its operation, under the supervision or instruction of a person responsible for their safety, so that they are fully aware of the attendant risks.
- Do not allow the unit to be cleaned or serviced by unsupervised children.
- Before moving or cleaning, ensure that the device is unplugged from the socket.
- Do not move the air conditioner while it is operating; first turn the appliance off, check and remove any condensation that may have formed.
- To turn the appliance off, set the remote control to OFF and remove the plug from the socket. Only pull on the plug. Do not pull the cord.
- **Do not use the appliance if the cord or plug are damaged.** If the power supply cord is damaged, it must be replaced by the manufacturer, dealer or a similarly qualified person so as to avoid any safety risks.

PRECAUTION!

- **Do not insert any objects into the air conditioner: this is very dangerous as the fan turns very quickly.**
- **Ensure that air circulates freely around the unit. Do not cover the air intake and delivery grilles with drapes or in any way.**

WARNING!

- The air conditioner must be positioned **at least 50 cm from the wall and any other obstacles, on a firm, flat surface to avoid water leaks.**
- **The air conditioner is fitted with a system to protect the compressor from overload. This means that the compressor only starts once 3 minutes have passed from its previous stop.**
- **Please wait at least 3 minutes before starting the unit. This helps prevent the compressor from being damaged.**

WARNING!

In the event of an anomaly, switch the appliance off and unplug from the socket. Do not dismantle or attempt to repair or modify the product. In the event of a malfunction, contact the after-sales service centre directly.

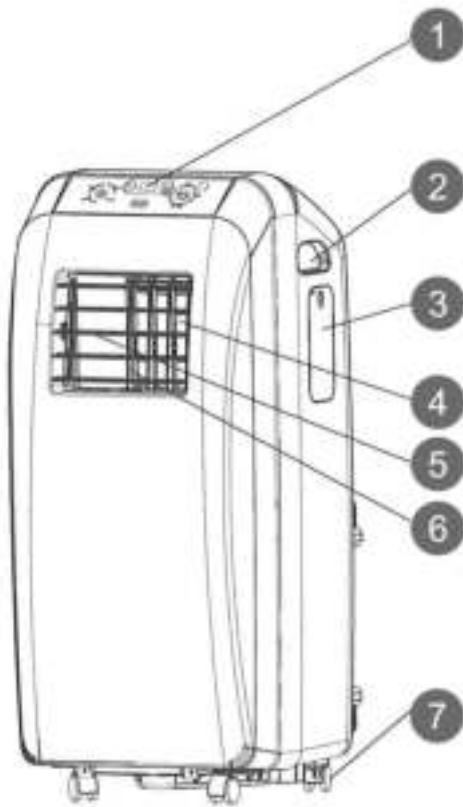
WARNING!

- **Do not expose the air conditioner to direct sunlight, as the colour of the materials may change and if the appliance overheats, this may activate the protection mechanism, causing it to switch off.**
- **Do not use insecticides, oils, detergents or spray paints near the appliance; do not use aggressive chemical detergents to clean the casing: this may damage the finish and colour.**
- **Close all open windows to maximise air-conditioning efficiency.**

The manufacturer will not be held liable if safety and accident prevention rules are not observed.

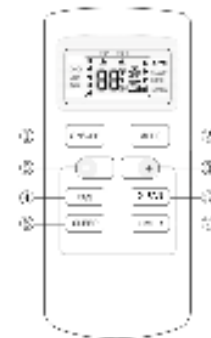
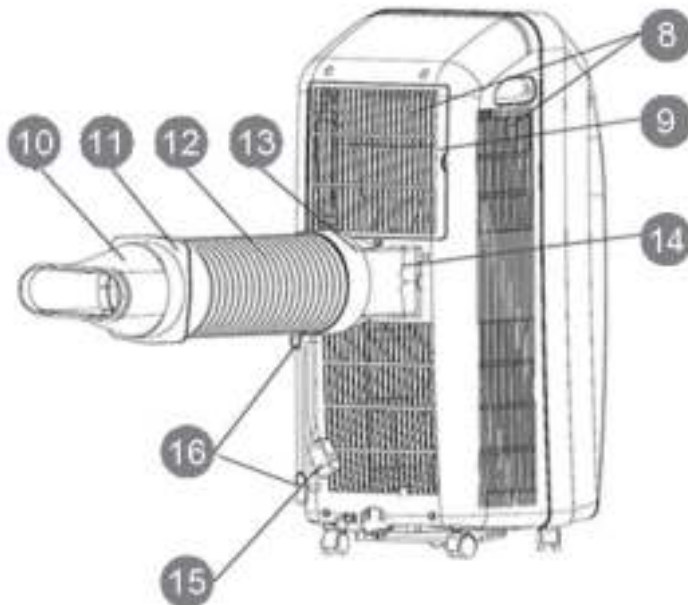
DESCRIPTION OF THE APPLIANCE

FRONT VIEW



- 1) CONTROL PANEL - FUNCTION BUTTONS WITHOUT REMOTE CONTROL
- 2) HANDLE
- 3) REMOTE CONTROL COMPARTMENT DOOR
- 4) AIR DELIVERY
- 5) HORIZONTAL LOUVERS
- 6) VERTICAL LOUVERS
- 7) WHEELS
- 8) AIR INTAKE
- 9) GRILLE
- 10) TERMINAL CONNECTION FOR WINDOW
- 11) CIRCULAR CONNECTION FOR WINDOW
- 12) AIR EXPULSION HOSE
- 13) AIR EXPULSION HOSE TERMINAL CONNECTION
- 14) FLAT CONNECTION
- 15) POWER CORD
- 16) CORD STORAGE HOOKS
- 17) REMOTE CONTROL

REAR VIEW



Min/max operating limits (internal temperature)

Cooling: 18°C B.S. / 35°C B.S.

Dehumidification: 10°C B.S. / 35°C B.S.

Cooling mode room temperature adjustment range: 16°C B.S. / 30°C B.S.

APPLIANCE START-UP

Open the packaging and remove the box from above. Remove the product and the other elements supplied (illustrated in the box below).

LCD remote control



Type AAA batteries for the remote control.



Circular connection for window (1) for positioning between the end of the tube and the terminal connection for the window.



Terminal connection for window (2).



Flat connection for positioning between the air discharge port and the hose



Hose.



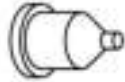
Screws.



Clamp



Cap



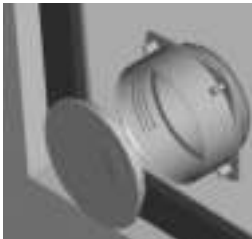
Cord storage



Drain hose



Window unit kit (3 pcs)



Circular connection for window unit, for positioning between the end of the tube and the window unit itself.



Window unit.



Cap.

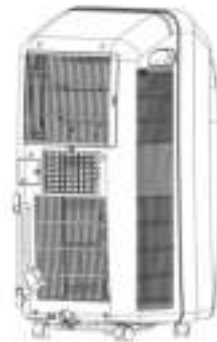
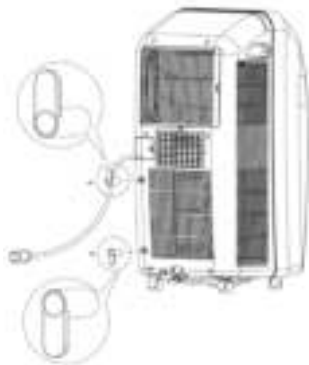


Place the product in a vertical position on a flat, stable surface, as close as possible to a window; leave a clearance of 50 cm from walls and other objects.

INSTALLING THE CORD STORAGE HOOKS

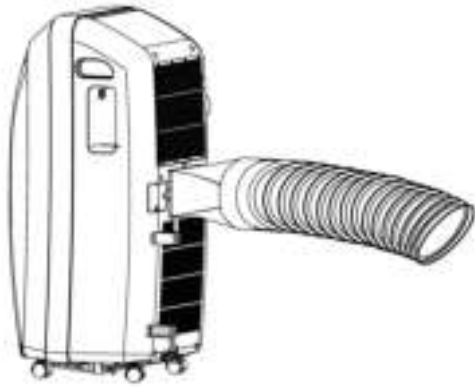
Install the cord storage hooks to the back of the unit using the screws, as shown in the figure.

When not using the appliance, wind the power cord onto these hooks.

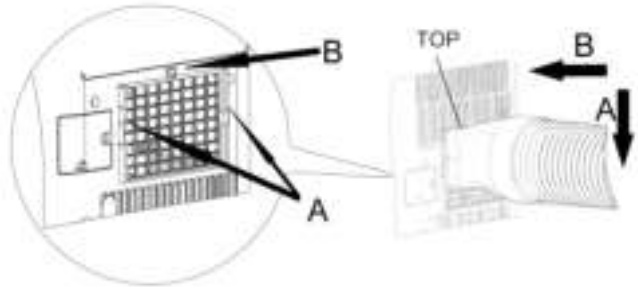


USE WITH TERMINAL CONNECTION FOR WINDOW

Connect the flat connection to the hose, extend the hose as far as necessary to reach the outside and connect it to the back of the air conditioner.



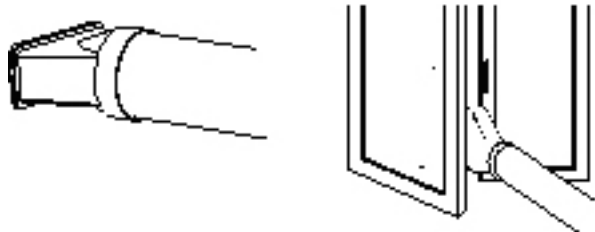
Now slide the flat connector downwards into the grooves (A) and secure it with the hook (B). The upper side of the flat connector is marked TOP.



Connect the circular window connector (1) to the end of the hose and then the window terminal (2).

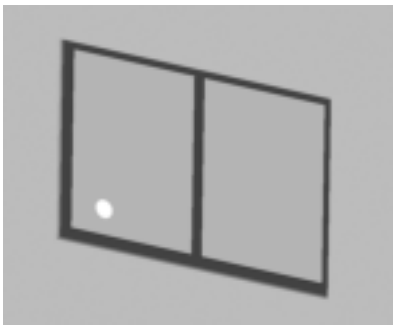


Open the windows and block one of the two leafs with the handle. Rest the terminal connector against the fixed section of the window, and move the other section up towards it.

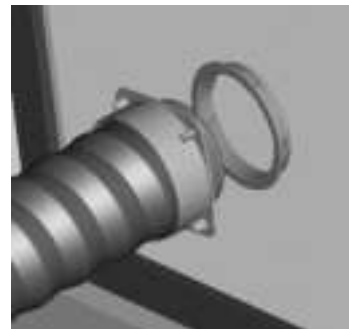


USE WITH WINDOW UNIT KIT

Make a 135 mm hole in the window panel.



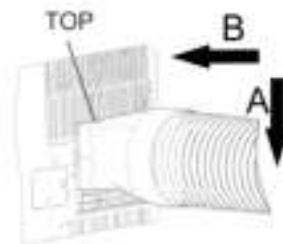
Insert the window unit without its closure cap into the window. Fit the circular connector into the retractable hose and insert the hose with its circular connector into the window unit.



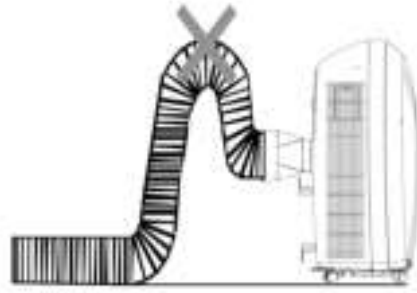
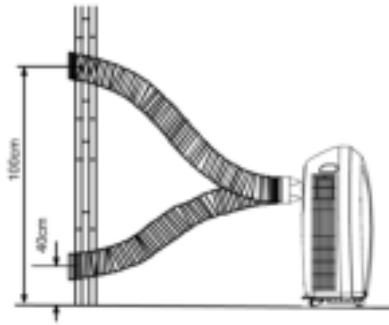
Fit the flat connector to the hose.



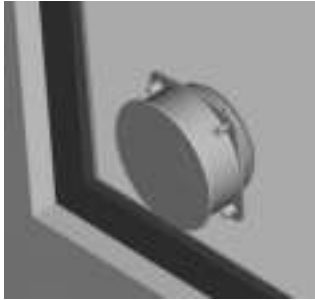
Insert the assembled hose into the back of the air conditioner.



The outlet must be between 40 cm and 100 cm off the ground. Avoid tight curves and folds in the hose.



When not using the air conditioner, disconnect the hose and fit the closing cap.

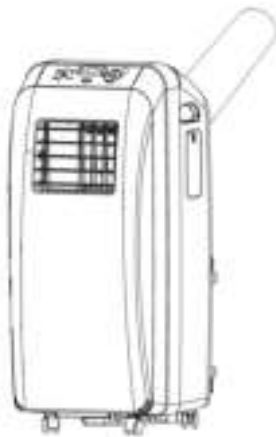


Connect the power cord to a suitable electrical socket (230V). Insert the provided batteries into the remote control, making sure to observe their indicated polarities. Select the desired operating mode from the remote control.

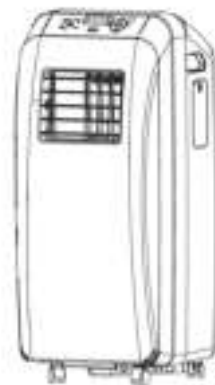
HOW TO USE THE APPLIANCE

This appliance can be used to Cool, Dehumidify and Fan.

When switching between modes, the fan continues operating but the compressor stops: the compressor will start again 3 minutes later. This delay protects the compressor from potential damage.



Cool, Fan



Dry

THE DISCHARGE TUBE MUST BE CONNECTED to the appliance AT ALL TIMES: the only exception is when the appliance is used for Dehumidification only, in which case it is recommended that the appliance discharges directly into the environment to obtain maximum efficiency (see the paragraph entitled "Dehumidification Mode"). Clean the air filters under the easily removable rear grille regularly to keep the air conditioner working efficiently.

OPERATING MODES

1. COOL MODE

- The first time it is turned on, the air conditioner will operate in Cooling mode with the temperature set to 25°C by default.
- The control panel Cool led will turn on.
- The temperature can be adjusted from 16° to 30°C.
- In this mode, each time the ON/OFF button is pressed, the unit switches off, the appliance saves the temperature setting and, when switched back on again, it will retain this setting.
- In this mode, the fan speed can be adjusted and the Timer and SLEEP functions can be set.
- For more silent operation, run the fan at low speed

2. DRY MODE

- Press the MODE button to select Dry.
- The temperature is controlled by the electronic card and cannot be regulated.
- In this mode, each time the ON/OFF button is pressed, the unit switches off, the appliance saves the settings and when switched back on again, it will retain them.
- Fan speed is fixed to low and cannot be adjusted.

NOTE

The air conditioner does not cool the environment when operating as a dehumidifier.

When the appliance is used as a dehumidifier, the flexible hose must not be connected.

For maximum dehumidification efficiency, leave the rear discharge attachment free to discharge directly into the environment.

Dehumidification mode is recommended in autumn and winter.

If used in the summer, it is best to leave the flexible hose attached, in order to send the hot air outside rather than releasing it into the environment.

During dehumidification, it is best to provide for continuous drainage (see the next chapter, "HOW TO ELIMINATE CONDENSATION").

3. FAN ONLY MODE

- Press the MODE button until the Fan icon displays.
- In this mode, the fan speed can be set.
- The temperature cannot be regulated.

HOW TO ELIMINATE CONDENSATION

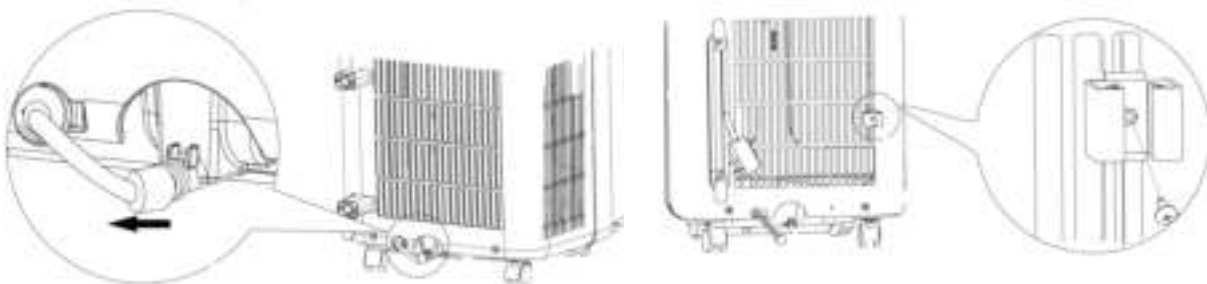
This equipment automatically evaporates condensation in Cooling and Heating mode.

When the air conditioner operates on **Cool mode**, there is no need to arrange for continuous drainage of condensation; only in specific weather conditions where air humidity levels are very high may water deposit within the unit. When the unit's tank is full, it beeps 8 times and the display reads "H8" to indicate that the tank is full; the air conditioner switches off.

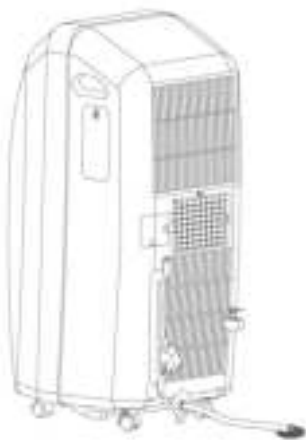
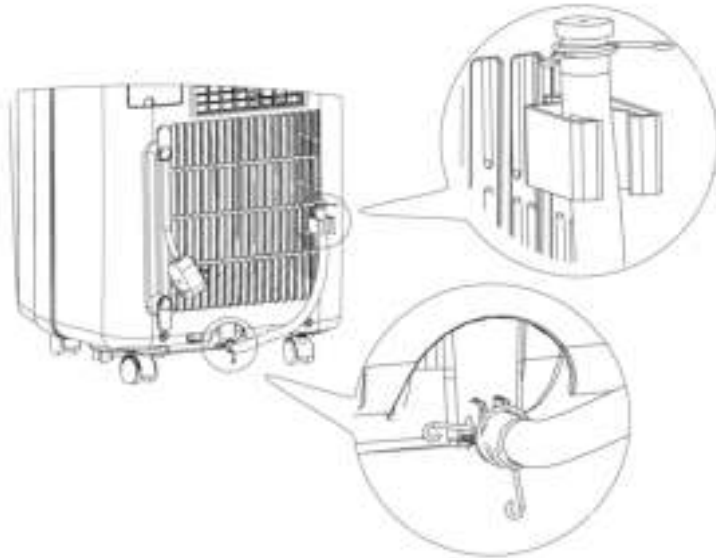
INSTALLING THE DRAIN HOSE

1. Remove the rubber plug on the back of the unit.

2. Screw the clamp onto the back of the unit to the right of the drain hole.



3. Screw the drain hose into the drain hole and then secure it with the clip. Fit the other end of the hose into the cap, secure it with the clip and then run it through the clamp.



Cooling

Ensure that when the unit is operating in Cool mode, the rubber cap closing the drain hole on the back of the appliance is in place.

To empty the container, switch the air conditioner off and unplug. Remove the cap from the rear drain hole and route its end over a normal drain.

Ensure that the tube is not twisted or bent. The tube must slope downwards. Close the drain again with the cap, fit it into the clamp, and resume use of the air conditioner.

Dry

WARNING!

When using the air conditioner in **Dry mode**, we recommend always ensuring continuous drainage, in order to guarantee maximum dehumidification efficiency.

To empty the tank, switch the air conditioner off and pull out its plug, remove the cap from the drain hole on the back of the unit and route its end over a normal drain.

REMOTE CONTROL OPERATION

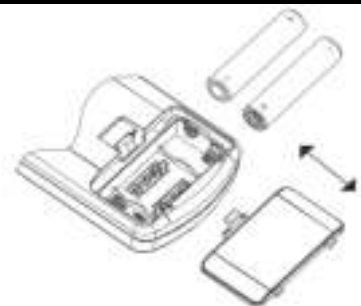
Insert the batteries into the remote control, respecting the indicated polarities.

Only use type AAA 1.5V batteries.

Remove the batteries if the remote control is not used for a month or more.

Do not attempt to recharge the batteries. Change all batteries at the same time.

Do not throw batteries onto a fire, they may explode.





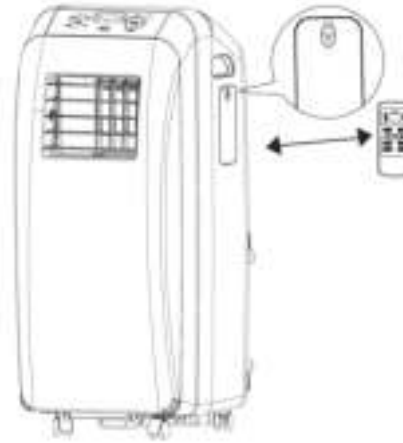
INFORMATION FOR CORRECT DISPOSAL OF THE PRODUCT IN ACCORDANCE WITH EUROPEAN DIRECTIVE

2006/66/EC

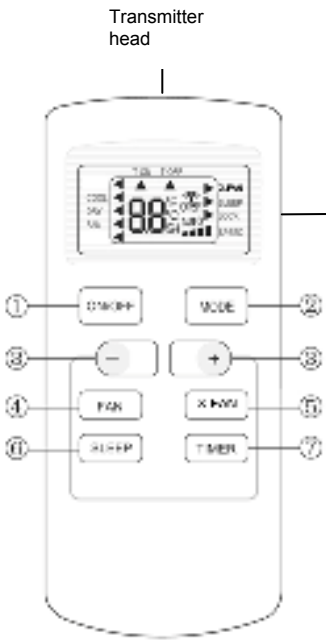

Please replace batteries when flat: at the end of their useful life, batteries must not be disposed of with unsorted waste. It must be delivered to appropriate separated waste disposal plants or to dealers that provide a similar service. Separate waste disposal of batteries prevents potential negative effects on the environment and human health resulting from inadequate disposal, and also allows the materials from which it is made to be recovered and recycled in order to achieve significant savings in terms of energy and resources. The separate disposal obligation is underlined by the crossed-out dustbin symbol appearing on the battery. Illegal disposal of the product by the user shall result in the application of administrative sanctions as defined by current regulations.

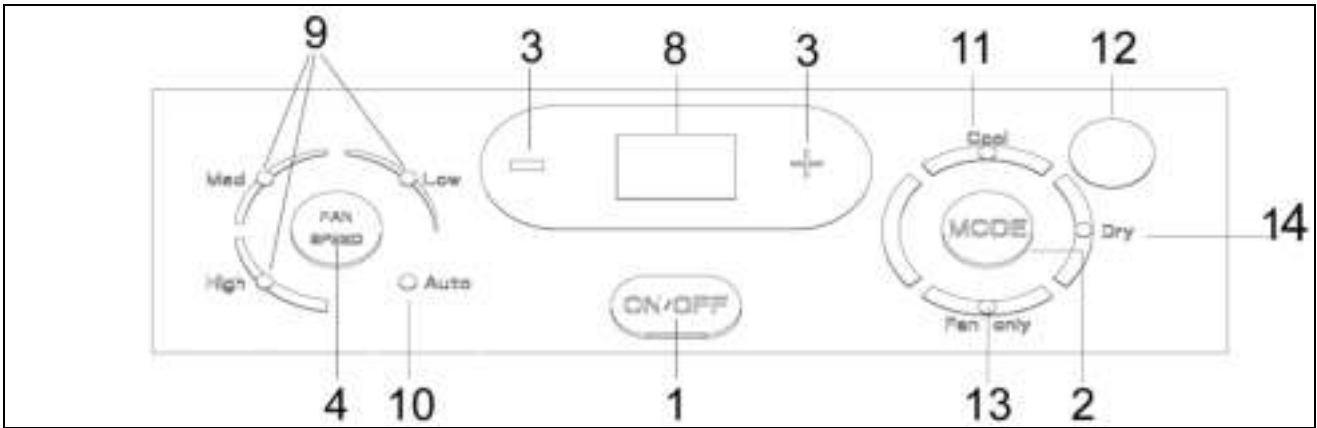
If you will not be using the remote control for a long time, store in its compartment on the side of the air conditioner.

Press the indicated arrow  to open the compartment.
Press it again to close the compartment.



FOR OPTIMAL REMOTE CONTROL FUNCTION, POINT THE HEAD OF THE TRANSMITTER TOWARDS THE RECEIVER ON THE AIR CONDITIONER.

 <p>Transmitter head</p> <p>Operating display</p> <p>1. ON/OFF</p> <p>2. MODE</p> <p>3. -</p> <p>4. +</p> <p>5. FAN</p> <p>6. X-FAN</p> <p>7. SLEEP</p> <p>8. TIMER</p>	 <p>Remote control receiver</p> <ol style="list-style-type: none">1. ON/OFF BUTTON2. MODE BUTTON3. TEMPERATURE AND TIMER BUTTON4. FAN SPEED BUTTON5. X-FAN BUTTON6. SLEEP BUTTON (only on remote control)7. TIMER BUTTON (only on remote control)8. TEMPERATURE AND ERROR DISPLAY9. FAN SPEED DISPLAY10. AUTO FAN SPEED DISPLAY11. COOL MODE DISPLAY12. REMOTE CONTROL RECEIVER13. FAN MODE DISPLAY14. DRY MODE DISPLAY
--	--

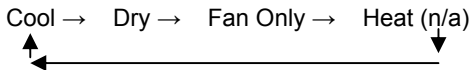


(1) ON/OFF BUTTON

Press the ON/OFF button to switch the unit on or off.
 When switched on, the appliance will start to operate as it was last set (memory function).

(2) MODE BUTTON

Press this button to select the different operating modes, according to the following sequence:



(3) TEMPERATURE ▲ ▼ AND TIMER BUTTON

Increase temperature (▲) :

- 1) Enables the adjustment of the temperature desired in Cool mode.
- 2) Pressing the button (▲) increases the temperature by 1°C.

Decrease temperature (▼):

- 1) Enables the adjustment of the temperature desired in Cool mode.
- 2) Pressing the button (▼) decreases the temperature by 1°C.

The same button is used for setting the **TIMER** only on remote control (see par. 7).

(4) FAN SPEED BUTTON

Pressing this button adjusts the fan speed when the unit is running in cool mode; the settings are AUTO, Low, Med and High.



The fan speed cannot be adjusted in **DRY** mode, when it is set to Low.

(5) X-FAN BUTTON

Pressing the X-FAN button in cooling or dehumidification mode, when the power is turned off the fan continues to operate for about 2 minutes to completely dry the evaporator.

(6) SLEEP BUTTON (remote control only)

Press this button to activate the Comfort function, which automatically adapts the temperature to changes in body and room temperature throughout the night, to optimise comfort when sleeping and minimise consumption.

(7) TIMER BUTTON (remote control only)

Press and hold this button for 1 second to set the timer.

1) **Timer-on (auto-on)**

When the appliance is off, this button is used to set a delay after which the unit will switch itself on. The T-ON and H icons light up. Press the + and - buttons within 5 seconds to set the delay. Select a number of hours from 0.5 to 24. Press the TIMER button to confirm. The T-ON icon will remain on to indicate that the TIMER is running.

2) **Timer-off (auto-off)**

When the appliance is running in COOL mode, this is used to set a delay after which the unit will switch off. The T-OFF and H icons light up. Press the + and - buttons within 5 seconds to set the delay. Select a number of hours

from 0.5 to 24. Press the **TIMER** button to confirm. The T-OFF icon will remain on to indicate that the **TIMER** is running.

Cancelling the timer: If the **TIMER** is set, press **TIMER** to display the delay. Press **TIMER** again to cancel the setting.

(8) TEMPERATURE AND ERROR DISPLAY

Problem	Cause	Solution
E5	Overcurrent protection.	Pull out the plug and insert it again after 10 minutes. If the problem persists, contact a service centre.
H8	Tank full.	Empty the tank. If the problem persists, contact a service centre.
F1	Temperature sensor failure.	Contact a service centre.
F2	Evaporator temperature sensor failure.	Contact a service centre.
F0	Refrigerant leak. Air conditioner out of service.	Contact a service centre.
H3	The room temperature is in excess of the appliance's operating range (over 35°). The ventilation grilles are blocked.	Wait for the temperature to drop below 35°C. Clear the obstruction to the ventilation grilles. If the problem persists, contact a service centre.

SAFETY FUNCTIONS

LOCK REMOTE

Press + and - at the same time to lock the remote control.

The Lock icon will light up on the remote control, and it will not respond to commands.

SWITCHING BETWEEN °C AND °F.

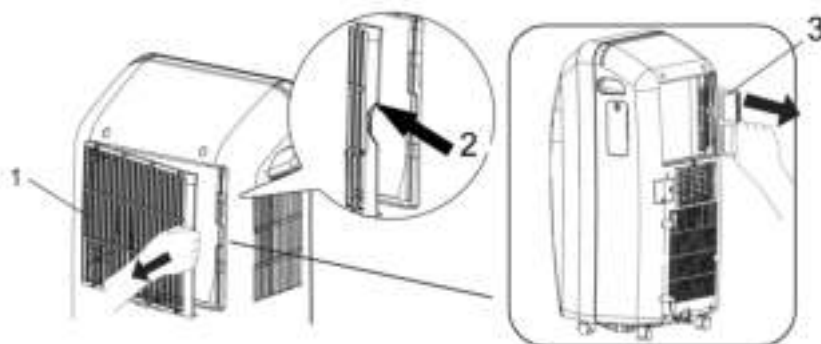
Press - and **MODE** together to switch between °C and °F.

CARE AND MAINTENANCE

WARNING!

Before carrying out any cleaning or maintenance, unplug from the electric socket.

1. Cleaning the air filters



The air filter must be checked at least once every two weeks of use. Operating with dirty or blocked filters will decrease the effectiveness of the air conditioner and can cause serious problems.

To remove the filter, release the rear grille and carefully pull the filter out sideways.

Use a vacuum cleaner to remove dust. If this is not sufficient, wash it with lukewarm water and some neutral detergent (if necessary), rinse it thoroughly in cold water and leave to dry in air before restoring it. Once the filter has been replaced, close the grille and return to using the air conditioner.

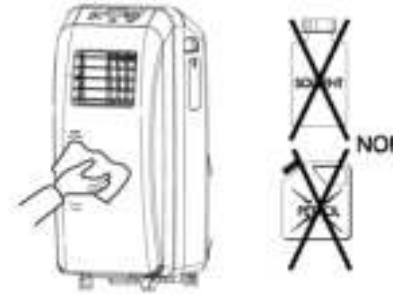


2. Cleaning the casing

Use a damp and soft cloth to clean the exterior surface of the air conditioner. Do not use water that is too hot, solvents, petrol or other aggressive chemical compounds, talcum powder or brushes: these may damage the surface or colour of the casing.

To remove stains use warm water with a little neutral detergent.

Do not pour water onto the air conditioner to clean it: this may damage the internal components or cause a short circuit.



3. Storage.

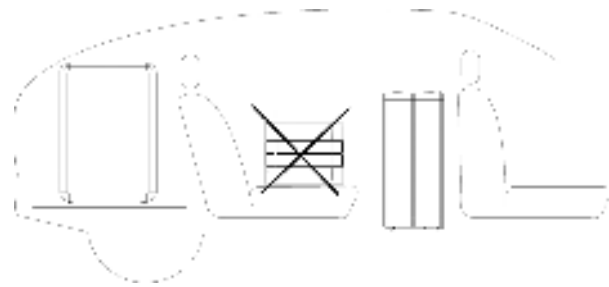
When you do not envisage using the air conditioner for a long time, before storing it away, clean the filters.

Keep the appliance in a vertical position at all times. Do not rest heavy objects on the top and, if possible, protect the air conditioner with a sheet of plastic.

4. Transport

If possible, transport the air conditioner in a vertical position.

If not possible, lie it on its right side; when you reach your destination, immediately return the appliance to a vertical position and wait at least 4 hours before using it to cool.



5. For complete safety, regularly check the condition

of the power cord; if it should be damaged through use, to replace it contact the Service Centre.

ADVICE FOR MAXIMUM COMFORT AND MINIMUM CONSUMPTION

CHECK that:

- the unit suction and delivery grilles are always free;
- the air filters are always clean; a dirty filter will decrease the passage of air and reduce the unit performance;
- doors and windows are closed, to avoid the infiltration of unconditioned air;
- the flexible hose is correctly positioned, without sharp bends or curves;
- the room temperature is above 18°C for Cool mode, 10°C for Dry mode.

REGULATION (EU) N. 517/2014 - F-GAS

The unit contains R410A, a fluorinated greenhouse gas with global warming potential (GWP) = 2087.50. Do not release R410A into the atmosphere.



INFORMATION FOR THE CORRECT DISPOSAL OF THE PRODUCT IN ACCORDANCE WITH EUROPEAN DIRECTIVE 2012/19/EU

This appliance may not be scrapped with domestic waste at the end of its life cycle. We call your attention to the crucial role played by the consumer in the re-use, recycling and other forms of recovery of such waste. The appliance must be scrapped by a sorted waste disposal centre or by returning it to the retailer (no charge is levied for this service), when you purchase a new equivalent appliance.

Sorted disposal of electric and electronic equipment prevents the negative effects on the environment and human health resulting from improper scrapping, and also allows the materials from which it is made to be recovered and recycled, with significant savings in terms of energy and resources.

The sorted disposal requirement is indicated by the crossed wastebbin label affixed to the appliance.



improve your life