

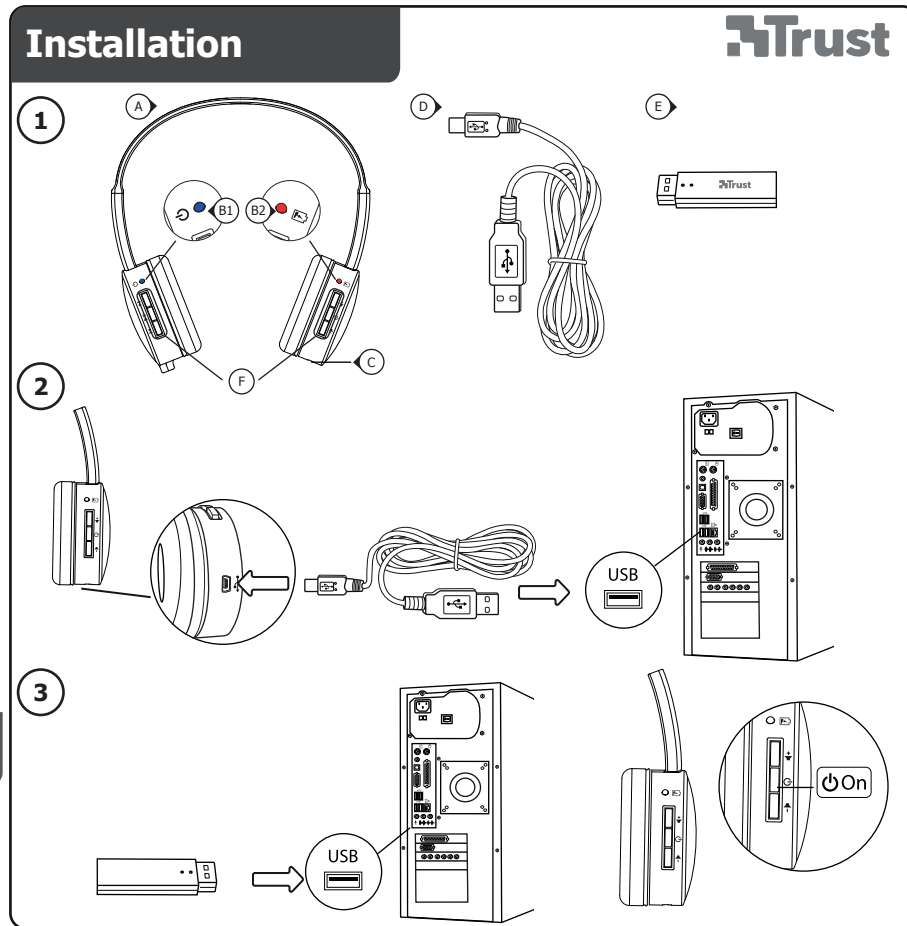


## Quick Installation Guide

Wireless Headset

18034

[www.trust.com/18034/faq](http://www.trust.com/18034/faq)

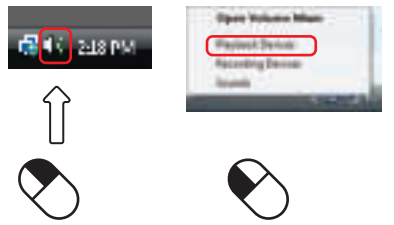


# Configuration

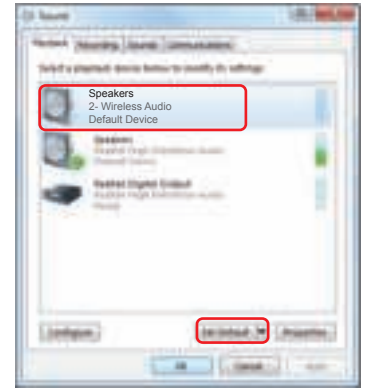


Windows 7/ Vista

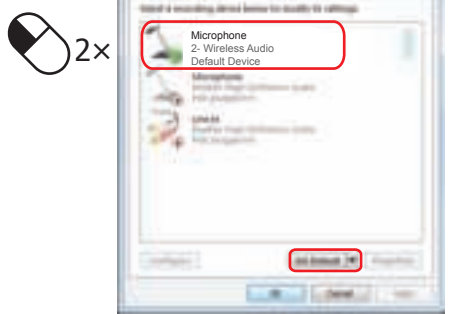
4



5



6



7



# Configuration



Windows XP

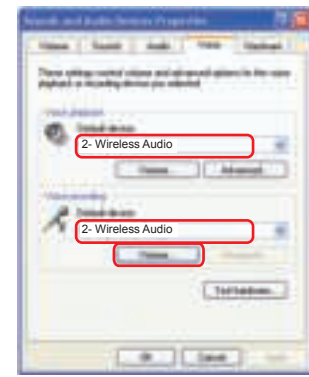
8



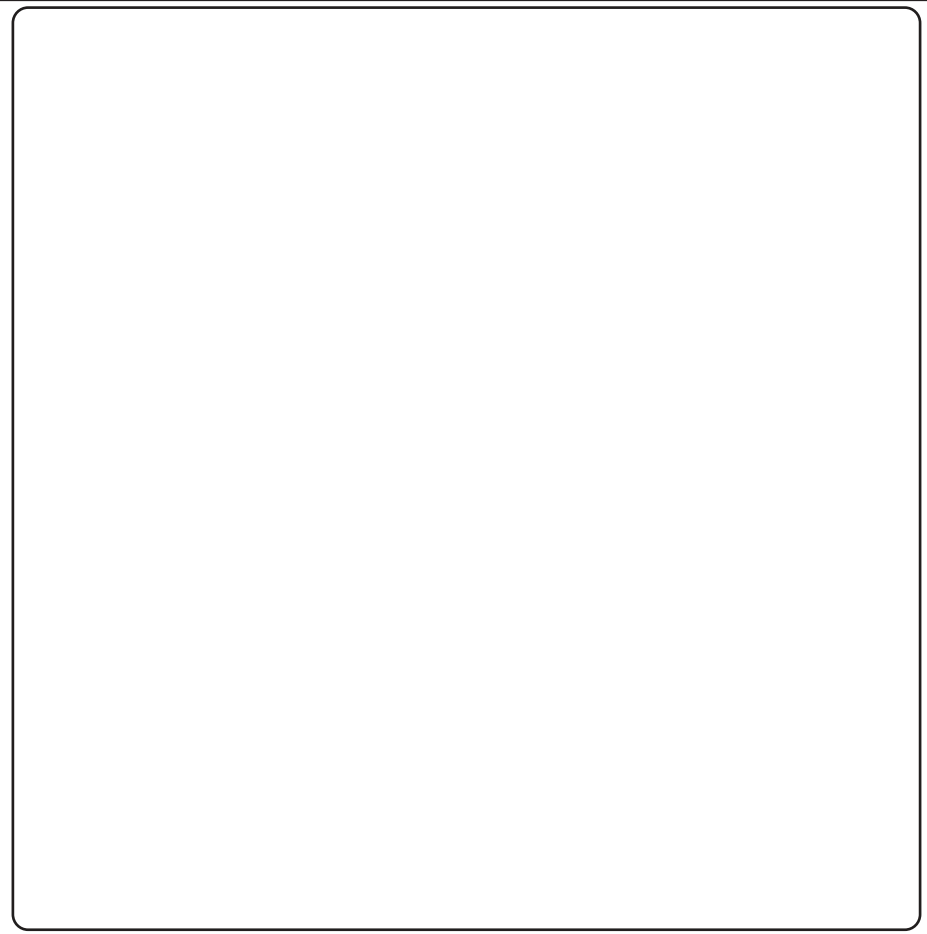
9



10



11



**Index**

Language	page
Englisch	2
Deutsch	4
Français	6
Italiano	8
Español	10
Português	12
Nederlands	14
Dansk	16
Suomi	18
Norsk	20
Svenska	22
Polski	24
Česky	26
Slovenčina	28
Magyar	30
Română	32
Български	34
Русский	36
Ελληνικά	38
Türkçe	40
Hrvatski	42

**Installation**

- 1 A. Headset  
B. LED light (B1/B2)  
C. USB connection  
D. USB charge cable  
E. USB receiver  
F. Media Buttons

---

 **Play/ Pause**

---

 **Previous**


---

 **Next**

---

 **Volume -**

---

 **Volume +**

---

- 2
  - Before using the headset needs to be fully charged.
  - Connect the USB charge cable to the headset and your computer to charge the headset.
  - When connected the (B2) LED light will turn red when charging.
  - The (B2) LED light will go off when the headset is completely charged.
- 3
  - Connect the USB receiver to your computer
  - Turn on the headset
  - The (B1) LED light will turn blue when it's connected.

**Configuration****Windows 7/ Vista**

- 4 Go to 'Playback Devices' to configure the headset.
- 5 Set the 'Wireless Audio' as your default device
- 6
  - Select the 'Recording' tab
  - Set the 'Wireless Audio' as your default device
  - Double click the 'Microphone'
- 7 Set the level to 100%

**Windows XP**

- 8 Go to 'Adjust Audio Properties' to configure the microphone
- 9
  - Set the default device to 'Wireless Audio' (voice and recording)
  - Go to the 'Voice' tab.
- 10 Click the 'Volume' of the Voice recording.
- 11 Set the level to 100%

**Trouble shooting**

<b>Problem</b>	<b>Solution</b>
<b>The headsets beeps</b>	- The battery is almost empty. Charge the headset. - Charge the headset.
<b>Bad sound quality</b>	- Connect the USB receiver to another USB port. - Maximum wireless range is 10m, but walls or big objects may reduce the range.
<b>No sound at all</b>	- Make sure you have charged the headset. - Make the headset your default audio device. See step '4' or '8' - Connect the USB receiver to another USB port.
<b>My friend on msn/skype does not hear what I'm saying</b>	- Increase the microphone volume and check if wireless headset is set as default device. Follow steps from '4' or '8'

■ If your problem is not solved, please contact the helpdesk at [www.trust.com/18034/faq](http://www.trust.com/18034/faq)