



Philips Evnia Curved
Gaming Monitor
QD OLED gaming monitor

Evnia 8000

34" (86.36 cm)
3440 x 1440 (WQHD)



34M2C8600

Gaming beyond innovation

Be prepared to get stunned by the precise color reproduction of Evnia QD OLED gaming monitor. The innovative Ambiglow redefines what gaming environment usually is. You won't miss a thing in your game with our curved display.

Built for fast action

- VESA Certified ClearMR: for accurate blur testing
- AMD FreeSync™ Premium Pro; smooth, low latency HDR gaming
- SmartImage game mode optimized for gamers

Immersive visuals

- QD OLED for superior colors and vibrant visuals
- Curved display design for more immersive experience
- DisplayHDR™ TrueBlack 400 delivers incredible shadow details
- Ultra Wide-Color wider range of colors for a vivid picture
- True 10-bit display reproduces smoother gradients on visuals
- CrystalClear images with UltraWide QHD 3440 x 1440 pixels

Features designed for gamers needs

- LowBlue mode and Flicker-free easy-on-the eyes viewing
- Enhanced audio with DTS Sound™
- Access and display multiple sources on two devices

EVNIA

PHILIPS

QD OLED gaming monitor
Evia 8000 34" (86.36 cm), 3440 x 1440 (WQHD)

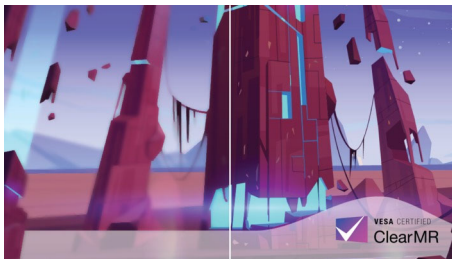
Highlights

QD OLED technology



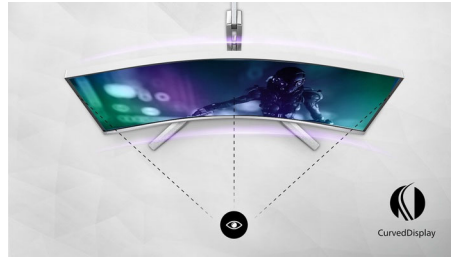
QD-OLED represents a hybrid approach that marries the OLED panels and quantum dot technology. By combining what's best of both, QD-OLED guarantees high contrast, deep blacks, and unlimited viewing angles, with the higher peak brightness and more vibrant colors.

VESA Certified ClearMR



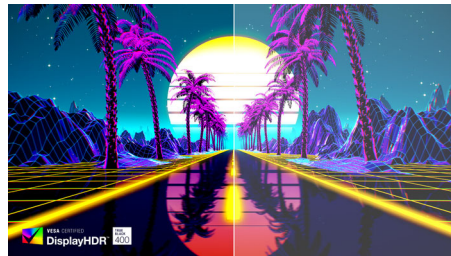
Previously, methods to test blur on screen were measured through MRPT. VESA Certified ClearMR acts as an alternative to MRPT and is designed to reflect the true nature of blur through digital high-speed camera testing. For monitors that are sent in and certified through VESA Certified ClearMR, you can rest assured that you will have an accurate assessment of the monitor's blur quality. Each certification is defined through a CMR range; with the tiers being ClearMR 3000, 4000, 5000, 6000, 7000, 8000, and 9000.

Curved display design



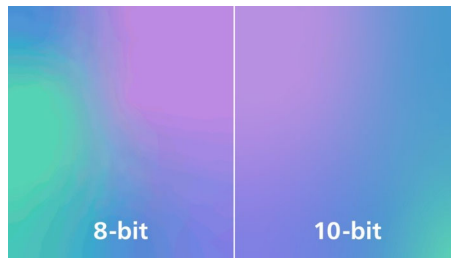
Desktop monitors offer a personal user experience, which suits a curve design very well. The curved screen provides a pleasant yet subtle immersion effect, which focuses on you at the center of your desk.

DisplayHDR™ True Black 400



This Philips monitor is certified with VESA DisplayHDR™ True Black 400. Delivering stunningly accurate shadow detail with deeper blacks for a remarkable visual experience compared with conventional monitors of the same peak luminance. This Philips monitor comes with several HDR modes, each optimized for your usage scenarios: HDR Game, HDR Movie, HDR Photo, and VESA DisplayHDR certified level.

True 10-bit color depth

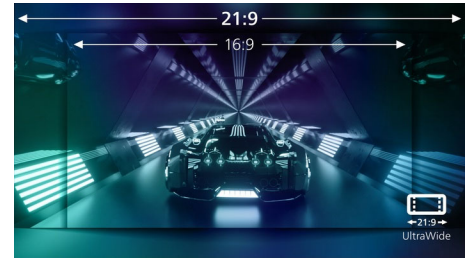


With this Philips true 10-bit color display, you can see color critical professional work of

34M2C8600/27

exceptional color accuracy and meeting professional standards. Compared with conventional 8-bit color display, this Philips monitor produces a more natural transition between hues for smoother gradients.

UltraWide CrystalClear images



These Philips screens deliver CrystalClear, UltraWide Quad HD 3440 x 1440 pixel images. Utilizing high performance panels with high-density pixel count, 178/178 wide viewing angles, these new displays will make your images and graphics come alive. The UltraWide 21:9 format enables more productivity with more room for side-by-side comparisons and more viewable spreadsheet columns. Whether you are demanding professional requiring extremely detailed information for CAD-CAM solutions, or a financial wizard working on huge spreadsheets, Philips displays delivers CrystalClear images.

AMD FreeSync™ Premium Pro



Gaming shouldn't be a choice between choppy gameplay or broken frames. AMD FreeSync™ Premium Pro provides the true HDR gaming experience: a combination of smooth gaming at peak performance, and exceptional high dynamic range visuals while still maintaining low latency.

QD OLED

VESA CERTIFIED
ClearMR 9000

Low Input Lag

21:9
Curved
Ultrawide

VESA CERTIFIED
DisplayHDR 400

WQHD

AMD
FreeSync
Premium Pro

MultiClient
Integrated KVM

USB-C

Specifications

Picture/Display

- Monitor Panel Type: QD OLED
- Panel Size: 34 inch / 86.36 cm
- Display Screen Coating: Anti-reflection, 2H
- Effective viewing area: 800.1 (H) x 337.1 (V) - at a 1800R curvature*
- Pixel format: RGB Q-Stripe*
- Aspect ratio: 21:9
- Maximum resolution: HDMI: 3440 x 1440 @ 100 Hz, DP/USB-C: 3440 x 1440 @ 175 Hz
- Pixel Density: 109.68 PPI
- Response time (typical): 0.03 ms (Gray to Gray)*
- Low Input Lag
- Brightness: SDR: 250 (APL 100%) nit, HDR: 450 (APL 10%) nit, HDR E/P: 1000 (APL 3%) nit
- SmartContrast: Mega Infinity DCR
- Contrast ratio (typical): 1,000,000:1
- Pixel pitch: 0.2315 x 0.2315 mm
- Viewing angle: 178° (H) / 178° (V), @ C/R > 10000
- Flicker-free
- HDR: DisplayHDR True Black 400 certified
- Color gamut (min.): DCI-P3: 99.3%*
- Color gamut (typical): NTSC 121.3%*, sRGB 148.8%*, Adobe RGB 97.8%*
- Picture enhancement: SmartImage game
- Display colors: Color support 1.07 billion colors (10 bit)
- Scanning Frequency: HDMI: 30 - 160 kHz (H) / 48 - 100 Hz (V), DP/USB-C: 30 - 255 kHz (H) / 48 - 175 Hz (V)
- LowBlue Mode
- EasyRead
- Delta E: <2 (sRGB)
- sRGB
- Adaptive sync
- Ambiglow: 4-sided

Connectivity

- Signal Input: HDMI 2.0 x 2, DisplayPort 1.4 x 1, USB-C x 1 (DP Alt mode, Video, Data and Power Delivery)
- HDCP: HDCP 1.4 (HDMI / DisplayPort / USB-C), HDCP 2.2 (HDMI / DisplayPort / USB-C), HDCP 2.3 (HDMI / DisplayPort / USB-C)
- USB Hub: USB 3.2 Gen 1 / 5 Gbps, USB-B upstream x 1, USB-A downstream x 4 (with 1 for fast charge B.C 1.2)
- Audio (In/Out): Audio out
- Sync Input: Separate Sync

Power Delivery

- Version: USB PD version 3.0
- Max power delivery: USB-C up to 90 W (5V/3A, 7V/3A, 9V/3A, 10V/3A, 12V/3A, 15V/3A, 20V/4.5A)

Convenience

- Built-in Speakers: 5 W x 2, DTS
- MultiView: PIP/PBP mode, 2x devices
- KVM
- User convenience: Power On/Off, Menu/OK, Input/Up, Game Settings/Down, SmartImage game/Back
- OSD Languages: Brazil Portuguese, Czech, Dutch,

- English, Finnish, French, German, Greek, Hungarian, Italian, Japanese, Korean, Polish, Portuguese, Russian, Spanish, Simplified Chinese, Swedish, Turkish, Traditional Chinese, Ukrainian
- Other convenience: Kensington lock, VESA mount (100x100mm), VESA bracket
- Plug & Play Compatibility: DDC/CI, Mac OS X, sRGB, Windows 11 / 10 / 8.1 / 8 / 7
- Low blue light: Low blue light compliance*

Stand

- Height adjustment: 150 mm
- Swivel: -/+ 20 degree
- Tilt: -5/20 degree

Power

- On mode: 113.6 W (typ.)
- Standby mode: 0.5 W (typ.)
- Off mode: 0.3 W (typ.)
- Power LED indicator: Operation - White, Standby mode- White (blinking)
- Power supply: Internal, 100-240VAC, 50-60Hz

Dimensions

- Product with stand(max height): 813 x 553 x 295 mm
- Product with stand(max height): 32.0 x 21.8 x 11.6 inch
- Product without stand (mm): 813 x 367 x 135 mm
- Product without stand in inch: 32.0 x 14.4 x 5.3 inch
- Packaging in mm (WxHxD): 930 x 525 x 282 mm
- Packaging in inch (WxHxD): 36.3 x 20.7 x 11.1 inch

Weight

- Product with stand (kg): 8.70 kg
- Product with stand (lb): 19.14 lb
- Product without stand (kg): 6.80 kg
- Product without stand (lb): 14.96 lb
- Product with packaging (kg): 12.49 kg
- Product with packaging (lb): 27.48 lb

Operating conditions

- Temperature range (operation): 0°C to 40 °C
- Temperature range (storage): -20°C to 60 °C
- Relative humidity: 20%-80 %
- Altitude: Operation: +12,000ft (3,658m), Non-operation: +40,000ft (12,192m)
- MTBF: 30,000 hour(s)

Sustainability

- Environmental and energy: RoHS
- Recyclable packaging material: 100 %
- Specific Substances: Mercury free, PVC / BFR free housing

Compliance and standards

- Regulatory Approvals: CB, CE Mark, FCC Class B, ICES-003, CU-EAC, EAEU RoHS, TUV/ISO9241-307, TUV-BAUART, cETLus

Cabinet

- Color: White
- Finish: Textured

What's in the box?

- Monitor with stand
- Cables: HDMI cable, DisplayPort cable, USB upstream cable, USB-C to USB-C cable, Power cable
- User Documentation

Issue date 2023-05-04

© 2023 Koninklijke Philips N.V.
All Rights reserved.

Version: 5.1.2

Specifications are subject to change without notice.
Trademarks are the property of Koninklijke Philips N.V.
or their respective owners.

12 NC: 8670 001 87803
UPC: 6 09585 25578 4

www.philips.com

* Radius of the arc of the display curvature in mm

* Active pixels: 3440 (H) x 1440 (V). Number of total pixels: 3456 (H) x 1456 (V); extra 8 pixels on each side, space reserved for pixel orbiting.

* Response time value equal to SmartResponse. The measurement pattern is 1 horizontal line.

* For best output performance, please always ensure that your graphic card is capable of achieving the maximum resolution and refresh rate of this Philips display.

* DCI-P3 Coverage based on CIE1976

* NTSC Area based on CIE1976

* sRGB Area based on CIE1931

* Adobe RGB Coverage based on CIE1976

* For USB-C power and charging function, your Notebook/device must support USB-C standard Power Delivery specifications. Please check with your Notebook user manual or manufacturer for more details.

* For Video transmission via USB-C, your Notebook/device must support USB-C DP Alt mode

* The ratio of display emission light in the range from 415 - 455 nm to the display emission of 400 - 500 nm shall be less than 50%.

* The monitor may look different from feature images.