



JLAB
EPIC PARTY
BLUETOOTH
SPEAKER

We love that you are rocking JLab!
We take pride in our products and fully stand behind them.



YOUR WARRANTY

All warranty claims are subject to JLab authorization and at our sole discretion. Retain your proof of purchase to ensure warranty coverage.



CONTACT US

Reach out to us at support@jlab.com or visit jlab.com/contact

REGISTER TODAY

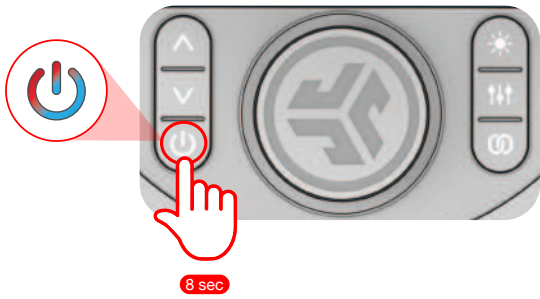
jlab.com/register

Product updates | How-to tips
FAQs & more

PAIR UP

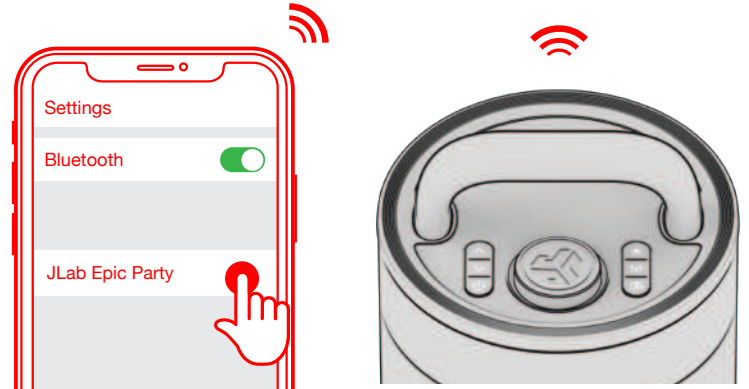
1

Press and hold button. Lights will flash **blue/red** to indicate pairing mode.



2

Select JLab Epic Party in your device settings to connect.



GET CHARGED



PULSES:
CHARGING

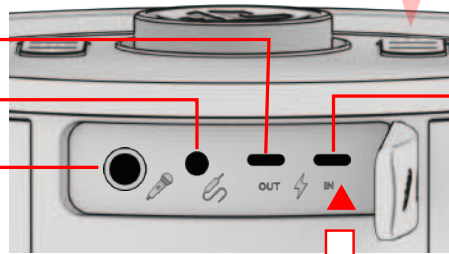


LIGHTS OFF:
CHARGED

USB-C CHARGE OUT
(charge other devices)

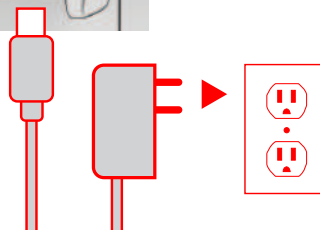
AUX INPUT

1/4" INPUT

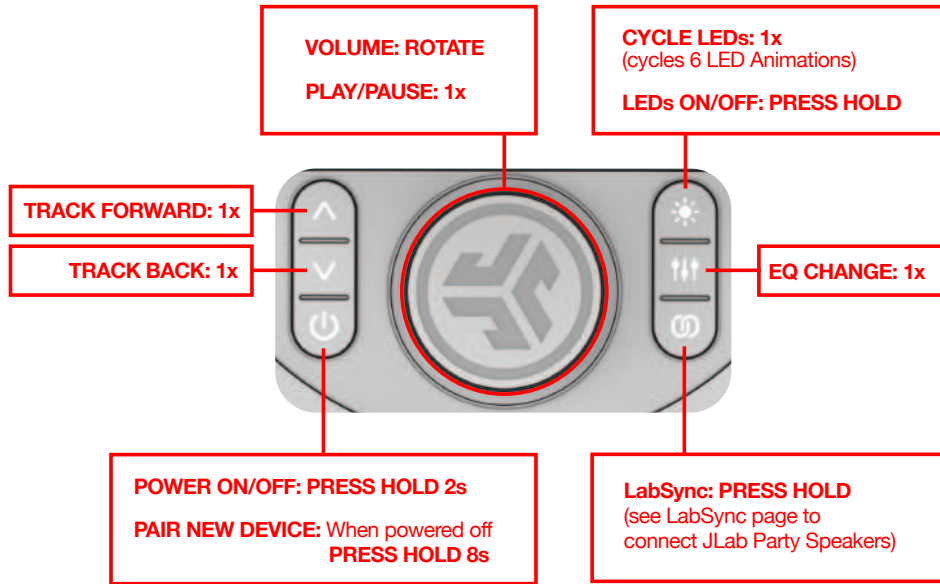


USB-C CHARGE IN
(charge Epic Party)

Connect 30w charger to **USB-C IN** and wall outlet to charge.

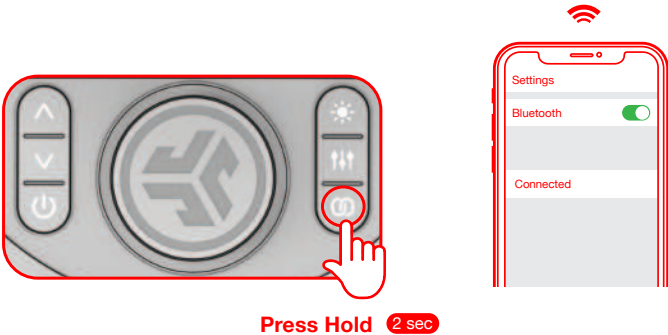


GO AHEAD, PRESS THE BUTTON

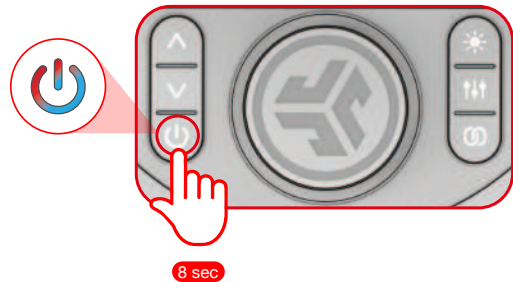


LabSync (CAST TO OTHER JLAB PARTY SPEAKERS)

- 1 Connect **Epic Party** to your device.
Press Hold to enter LabSync.
Epic Party will say "LabSync"



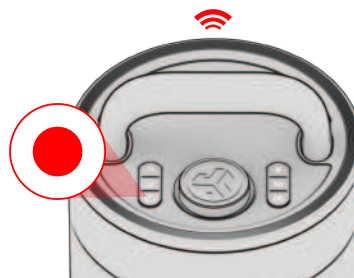
- 2 With your other **JLab Party Speaker(s)** turned off, **Press hold** power button until LEDs flash blue/red.



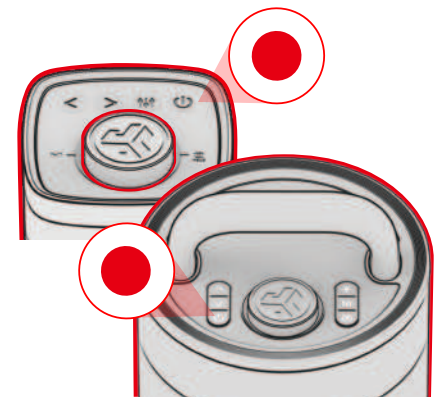
- 3 Followed by entering LabSync on your other speaker(s).



- 4 Casting



- Receiving

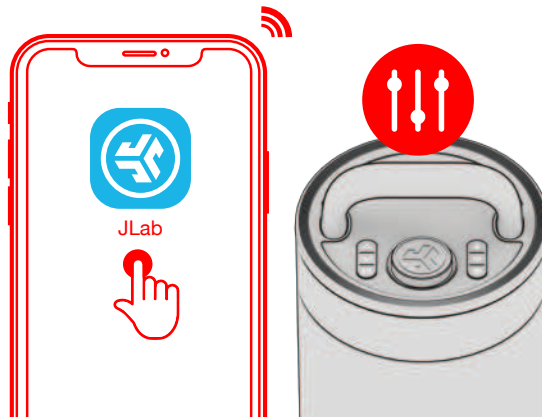


QUICK TIPS:

- Epic Party is set to Eco-Mode by default. Lights will turn off when battery is less than 25% to conserve power.
- Turning off the lights will significantly improve playtime.
- Epic Party will auto power off if no media is playing for 30 minutes.
- Download the JLab App to adjust the default settings.
- LabSync works with all JLab Pop Party, GO Party, JBuds Party, and Epic Party speakers.

DOWNLOAD THE APP

Customize the Sound, Lights, and Features.



[Shop products](#) | [Product alerts](#) | [Burn-in your headphones](#)

[JLab Store + Burn-in Tool](#)

