

TEST REPORT

Report No.: XMTN3220421-15546E

Date: June 02, 2022

Page 1 of 34

Xiamen Baby Chic Electronics Co., Ltd/Xiamen Doopser Electronics Co., Ltd

Unit B, Room 303, 3 Xiangming Road, Torch Hi-tech Zone, Xiang' an District, Xiamen, Fujian, China

Report on the submitted samples said to be:

Sample Description:	Electric breast pump
Style/Item No.:	DPS-8012,DPS-8008,DPS-8009,DPS-8009-1,DPS-8009-2,DPS-8010,DPS-8011
Sample Receiving Date:	April 21,2022
Testing Period:	April 21,2022 - May 27,2022
Result:	Please refer to next page(s).

Signed for and on behalf of

BACL



Checked by: _____
Jenifer Yu

Approved by: _____
Fedor Zhang



TEST REPORT

Report No.: XMTN3220421-15546E

Date: June 02, 2022

Page 2 of 34

Summary of Test Result:

TEST REQUEST

CONCLUSION

A RoHS Directive 2011/65/EU and its amendment directives (EU) 2015/863

Pass

A.1 XRF screening test

Please refer to next page(s).

A.2 Wet Chemical Testing

A.2.1 Total Lead content

Please refer to next page(s).

A.2.2 Chromium VI (CrVI) content

Please refer to next page(s).

A.2.3 PBBs & PBDEs content

Please refer to next page(s).

A.3 Phthalates(DBP, BBP, DEHP, DIBP)content

Please refer to next page(s).

TEST REPORT

Report No.: XMTN3220421-15546E

Date: June 02, 2022

Page 3 of 34

A RoHS Directive 2011/65/EU and its amendment directives (EU) 2015/863

A.1 XRF screening test

Test method: IEC 62321-3-1:2013

Seq No.	Tested Part(s)	Result				
		Pb	Cd	Hg	Cr	Br
(1)	Transparent plastic(sucking cover,Electric breast pump"DPS-8012") [1][3]	BL	BL	BL	BL	BL
(2)	Transparent soft plastic(sucking cover,Electric breast pump"DPS-8012") [1][3]	BL	BL	BL	BL	BL
(3)	Green plastic(shell,host,Electric breast pump"DPS-8012") [1]	BL	BL	BL	BL	BL
(4)	Green soft plastic(holder,host,Electric breast pump"DPS-8012") [1]	BL	BL	BL	BL	BL
(5)*	Silvery metal with blue plate(screw,host,Electric breast pump"DPS-8012") [1][2][3][4][5][6]	BL	BL	BL	IN	---
(6)	Orange plastic(holder,host,Electric breast pump"DPS-8012") [1]	BL	BL	BL	BL	BL
(7)	Transparent plastic with black coating(display,host,Electric breast pump"DPS-8012") [1]	BL	BL	BL	BL	BL
(8)	Transparent double faced adhesive tape(sticker,host,Electric breast pump"DPS-8012") [1]	BL	BL	BL	BL	BL
(9)	Yellow soft plastic(diaphragm,host,Electric breast pump"DPS-8012") [1][3]	BL	BL	BL	BL	BL
(10)	Silvery metal(screw,PCB"01.02.10.0169 8012",Electric breast pump"DPS-8012") [1]	BL	BL	BL	BL	---
(11)*	Green PCB(PCB"01.02.10.0169 8012",Electric breast pump"DPS-8012") [1]	BL	BL	BL	BL	IN
(12)	Silvery solder(PCB"01.02.10.0169 8012",Electric breast pump"DPS-8012") [1]	BL	BL	BL	BL	---
(13)	Brown body(capacitor,PCB"01.02.10.0169 8012") [1][2][3][4][5][6][7]	BL	BL	BL	BL	BL
(14)	Black body(resistor,PCB"01.02.10.0169 8012") [1][2][3][4][5][6][7]	BL	BL	BL	BL	BL
(15)	Grey body(inductor,PCB"01.02.10.0169 8012") [1][2][3][4][5][6][7]	BL	BL	BL	BL	BL
(16)	Coppery metal(coil,inductor,PCB"01.02.10.0169 8012") [1][2][3][4][5][6][7]	BL	BL	BL	BL	---
(17)	Black body(triode,PCB"01.02.10.0169 8012") [1][2][3][4][5][6][7]	BL	BL	BL	BL	BL
(18)*/*2	Black body(diode,PCB"01.02.10.0169 8012") [1][2][3][4][5][6][7]	OL	BL	BL	BL	IN
(19)*/*2	Red/black body(diode,PCB"01.02.10.0169 8012") [1][2][3][4][5][6][7]	OL	BL	BL	BL	BL
(20)	Black body(IC"U1",PCB"01.02.10.0169 8012") [1][2][3][4][5][6][7]	BL	BL	BL	BL	BL
(21)	Black body(IC"U2",PCB"01.02.10.0169 8012") [1][2][3][4][5][6][7]	BL	BL	BL	BL	BL
(22)	White plastic(socket,PCB"01.02.10.0169 8012") [1][2][3][4][5][6]	BL	BL	BL	BL	BL
(23)	Silvery metal(pin,socket,PCB"01.02.10.0169 8012") [1][2][3][4][5][6]	BL	BL	BL	BL	---
(24)	Black plastic(base,capacitor"C6",PCB"01.02.10.0169 8012") [1][2][3][4][5][6][7]	BL	BL	BL	BL	BL
(25)	Silvery metal with black printing(shell,capacitor"C6",PCB"01.02.10.0169 8012") [1][2][3][4][5][6][7]	BL	BL	BL	BL	---
(26)	Black soft plastic(base,capacitor"C6",PCB"01.02.10.0169 8012") [1][2][3][4][5][6][7]	BL	BL	BL	BL	BL

TEST REPORT

Report No.: XMTN3220421-15546E

Date: June 02, 2022

Page 4 of 34

Seq No.	Tested Part(s)	Result				
		Pb	Cd	Hg	Cr	Br
(27)	White paper with liquid(film,capacitor"C6",PCB"01.02.10.0169 8012") [1][2][3][4][5][6][7]	BL	BL	BL	BL	BL
(28)	Silvery metal(connector,capacitor"C6",PCB"01.02.10.0169 8012") [1][2][3][4][5][6][7]	BL	BL	BL	BL	---
(29)	Silvery metal(pin,capacitor"C6",PCB"01.02.10.0169 8012") [1][2][3][4][5][6][7]	BL	BL	BL	BL	---
(30)	Silvery metal(foil,capacitor"C6",PCB"01.02.10.0169 8012") [1][2][3][4][5][6][7]	BL	BL	BL	BL	---
(31)	Dull silvery metal(foil,capacitor"C6",PCB"01.02.10.0169 8012") [1][2][3][4][5][6][7]	BL	BL	BL	BL	---
(32)	Silvery metal(spring,PCB"01.02.10.0169 8012") [1][2][4][5][6][7]	BL	BL	BL	BL	---
(33)	Green glue(sticker,screen,PCB"01.02.10.0169 8012") [1][3]	BL	BL	BL	BL	BL
(34)	Silvery metal(pin,screen,PCB"01.02.10.0169 8012") [1][3]	BL	BL	BL	BL	---
(35)	Grey transparent plastic(film,screen,PCB"01.02.10.0169 8012") [1][3]	BL	BL	BL	BL	BL
(36)	Transparent glass(screen,PCB"01.02.10.0169 8012") [1][3]	BL	BL	BL	BL	BL
(37)	Black/white adhesive plastic(sticker,screen,PCB"01.02.10.0169 8012") [1][3]	BL	BL	BL	BL	BL
(38)	White adhesive plastic(film,screen,PCB"01.02.10.0169 8012") [1][3]	BL	BL	BL	BL	BL
(39)	Transparent plastic(screen,PCB"01.02.10.0169 8012") [1][3]	BL	BL	BL	BL	BL
(40)	White translucent plastic(film,screen,PCB"01.02.10.0169 8012") [1][3]	BL	BL	BL	BL	BL
(41)*	White PCB(PCB"KZJDB-2641W",screen,PCB"01.02.10.0169 8012") [1][3]	BL	BL	BL	BL	IN
(42)	Yellow body(LED,PCB"KZJDB-2641W",screen) [1][3]	BL	BL	BL	BL	BL
(43)	Black foam with glue(sticker,pressure pump,Electric breast pump"DPS-8012") [1][2][3][4][5][6][7]	BL	BL	BL	BL	BL
(44)	White adhesive paper with black/red printing(sticker,pressure pump,Electric breast pump"DPS-8012") [1][2][3][4][5][6][7]	BL	BL	BL	BL	BL
(45)*	Silvery metal with blue plate(screw,pressure pump,Electric breast pump"DPS-8012") [1][2][3][4][5][6][7]	BL	BL	BL	IN	---
(46)*	Silvery metal with blue plate(spacer,screw,pressure pump,Electric breast pump"DPS-8012") [1][2][3][4][5][6][7]	BL	BL	BL	IN	---
(47)	Silvery metal(screw,pressure pump,Electric breast pump"DPS-8012") [1][2][3][4][5][6][7]	BL	BL	BL	BL	---
(48)	Beige plastic(shell,pressure pump,Electric breast pump"DPS-8012") [1][2][3][4][5][6][7]	BL	BL	BL	BL	BL
(49)	Black soft plastic(spacer,pressure pump,Electric breast pump"DPS-8012") [1][2][3][4][5][6][7]	BL	BL	BL	BL	BL
(50)	White plastic(holder,pressure pump,Electric breast pump"DPS-8012") [1][2][3][4][5][6][7]	BL	BL	BL	BL	BL
(51)	Beige plastic(brush holder,motor,Electric breast pump"DPS-8012") [1][2][3][4][5][6][7]	BL	BL	BL	BL	BL

TEST REPORT

Report No.: XMTN3220421-15546E

Date: June 02, 2022

Page 5 of 34

Seq No.	Tested Part(s)	Result				
		Pb	Cd	Hg	Cr	Br
(52)	Coppery metal(brush bar,motor,Electric breast pump"DPS-8012") [1][2][3][4][5][6][7]	BL	BL	BL	BL	---
(53)	Silvery solder(brush bar,motor,Electric breast pump"DPS-8012") [1][2][3][4][5][6][7]	BL	BL	BL	BL	---
(54)	Coppery material(carbon brush,motor,Electric breast pump"DPS-8012") [1][2][3][4][5][6][7]	BL	BL	BL	BL	BL
(55)	Black foam with glue(sticker,carbon brush,motor,Electric breast pump"DPS-8012") [1][2][3][4][5][6][7]	BL	BL	BL	BL	BL
(56)	Dull silvery metal(holder,magnet,motor,Electric breast pump"DPS-8012") [1][2][3][4][5][6][7]	BL	BL	BL	BL	---
(57)	White adhesive plastic(sticker,motor,Electric breast pump"DPS-8012") [1][2][3][4][5][6][7]	BL	BL	BL	BL	BL
(58)	Black soft plastic(gasket,motor,Electric breast pump"DPS-8012") [1][2][3][4][5][6][7]	BL	BL	BL	BL	BL
(59)	Coppery metal(holder,end cover,motor,Electric breast pump"DPS-8012") [1][2][3][4][5][6][7]	BL	BL	BL	BL	---
(60)	White plastic(holder,ball,motor,Electric breast pump"DPS-8012") [1][2][3][4][5][6][7]	BL	BL	BL	BL	BL
(61)*	Silvery metal(ball,motor,Electric breast pump"DPS-8012") [1][2][3][4][5][6][7]	BL	BL	BL	IN	---
(62)	Silvery metal(shell,motor,Electric breast pump"DPS-8012") [1][2][3][4][5][6][7]	BL	BL	BL	BL	---
(63)	Black magnet(core,motor,Electric breast pump"DPS-8012") [1][2][3][4][5][6][7]	BL	BL	BL	BL	BL
(64)	White plastic(spacer,shaft,motor,Electric breast pump"DPS-8012") [1][2][3][4][5][6][7]	BL	BL	BL	BL	BL
(65)	Red plastic(gasket,shaft,motor,Electric breast pump"DPS-8012") [1][2][3][4][5][6][7]	BL	BL	BL	BL	BL
(66)	LT. yellow plastic(base plate,motor,Electric breast pump"DPS-8012") [1][2][3][4][5][6][7]	BL	BL	BL	BL	BL
(67)	Black material(base plate,motor,Electric breast pump"DPS-8012") [1][2][3][4][5][6][7]	BL	BL	BL	BL	BL
(68)	Silvery solder(base plate,motor,Electric breast pump"DPS-8012") [1][2][3][4][5][6][7]	BL	BL	BL	BL	---
(69)	Coppery/silvery metal(commutator,motor,Electric breast pump"DPS-8012") [1][2][3][4][5][6][7]	BL	BL	BL	BL	---
(70)	Coppery metal(coil,motor,Electric breast pump"DPS-8012") [1][2][3][4][5][6][7]	BL	BL	BL	BL	---
(71)	White plastic(gasket,shaft,motor,Electric breast pump"DPS-8012") [1][2][3][4][5][6][7]	BL	BL	BL	BL	BL
(72)	White plastic(spacer,gear,motor,Electric breast pump"DPS-8012") [1][2][3][4][5][6][7]	BL	BL	BL	BL	BL
(73)*	Dull silvery metal(gear,motor,Electric breast pump"DPS-8012") [1][2][3][4][5][6][7]	BL	BL	BL	IN	---

TEST REPORT

Report No.: XMTN3220421-15546E

Date: June 02, 2022

Page 6 of 34

Seq No.	Tested Part(s)	Result				
		Pb	Cd	Hg	Cr	Br
(74)*	Silvery metal(shaft,motor,Electric breast pump"DPS-8012") [1][2][3][4][5][6][7]	BL	BL	BL	IN	---
(75)	Black soft plastic with white printig(wire jacket,motor,Electric breast pump"DPS-8012") [1][2][3][4][5][6][7]	BL	BL	BL	BL	BL
(76)	Red soft plastic with white printig(wire jacket,motor,Electric breast pump"DPS-8012") [1][2][3][4][5][6][7]	BL	BL	BL	BL	BL
(77)	Silvery metal(wire,motor,Electric breast pump"DPS-8012") [1][2][3][4][5][6][7]	BL	BL	BL	BL	---
(78)	Silvery metal(pin,wire,motor,Electric breast pump"DPS-8012") [1][2][3][4][5][6][7]	BL	BL	BL	BL	---
(79)	White plastic(pin holder,wire,motor,Electric breast pump"DPS-8012") [1][2][3][4][5][6][7]	BL	BL	BL	BL	BL
(80)	White plastic(three-way device,Electric breast pump"DPS-8012") [1][2][3][4][5][6][7]	BL	BL	BL	BL	BL
(81)	Translucent soft plastic(connector,Electric breast pump"DPS-8012") [1][2][3][4][5][6][7]	BL	BL	BL	BL	BL
(82)	Silvery metal with blue plate(shell,solenoid valve,Electric breast pump"DPS-8012") [1][2][3][4][5][6][7]	BL	BL	BL	BL	---
(83)	Silvery metal(shaft,solenoid valve,Electric breast pump"DPS-8012") [1][2][3][4][5][6][7]	BL	BL	BL	BL	---
(84)*	Silvery metal(spring,solenoid valve,Electric breast pump"DPS-8012") [1][2][3][4][5][6][7]	BL	BL	BL	IN	---
(85)	White/black soft plastic(spacer,solenoid valve,Electric breast pump"DPS-8012") [1][2][3][4][5][6][7]	BL	BL	BL	BL	BL
(86)	White plastic(holder,solenoid valve,Electric breast pump"DPS-8012") [1][2][3][4][5][6][7]	BL	BL	BL	BL	BL
(87)	Yellow plastic(sticker,solenoid valve,Electric breast pump"DPS-8012") [1][2][3][4][5][6][7]	BL	BL	BL	BL	BL
(88)	Black soft plastic with white printig(wire jacket,solenoid valve,Electric breast pump"DPS-8012") [1][2][3][4][5][6][7]	BL	BL	BL	BL	BL
(89)	Black plastic(wire jacket,battery,Electric breast pump"DPS-8012") [1][2][3][4][5][6][7]	BL	BL	BL	BL	BL
(90)	Red plastic(wire jacket,battery,Electric breast pump"DPS-8012") [1][2][3][4][5][6][7]	BL	BL	BL	BL	BL
(91)	Yellow transparent plastic(sticker,battery,Electric breast pump"DPS-8012") [1][2][3][4][5][6][7]	BL	BL	BL	BL	BL
(92)*	Green PCB(PCB,battery,Electric breast pump"DPS-8012") [1][2][3][4][5][6][7]	BL	BL	BL	BL	IN
(93)	Silvery solder(PCB,battery,Electric breast pump"DPS-8012") [1][2][3][4][5][6][7]	BL	BL	BL	BL	---
(94)	Black body(IC,PCB,battery,Electric breast pump"DPS-8012") [1][2][3][4][5][6][7]	BL	BL	BL	BL	BL
(95)	Silvery metal(connection strap,PCB,battery,Electric breast pump"DPS-8012") [1][2][3][4][5][6][7]	BL	BL	BL	BL	---

TEST REPORT

Report No.: XMTN3220421-15546E

Date: June 02, 2022

Page 7 of 34

Seq No.	Tested Part(s)	Result				
		Pb	Cd	Hg	Cr	Br
(96)*	Silvery metal(shell,socket"TP4",PCB"01.02.10.0169 8012") [1][2]	BL	BL	BL	IN	---
(97)	Black plastic(pin holder,socket"TP4",PCB"01.02.10.0169 8012") [1][2]	BL	BL	BL	BL	BL
(98)	Silvery/golden metal(pin,socket"TP4",PCB"01.02.10.0169 8012") [1][2]	BL	BL	BL	BL	---
(99)	White plastic(shell,micro plug,cable"Type-C interface") [1][2]	BL	BL	BL	BL	BL
(100)*	Silvery metal(shell,micro plug,cable"Type-C interface") [1][2]	BL	BL	BL	IN	---
(101)	Black plastic(pin holder,micro plug,cable"Type-C interface") [1][2]	BL	BL	BL	BL	BL
(102)*	Green PCB(PCB,micro plug,cable"Type-C interface") [1][2]	BL	BL	BL	BL	IN
(103)	Silvery solder(PCB,micro plug,cable"Type-C interface") [1][2]	BL	BL	BL	BL	---
(104)*	Silvery metal(connection strap,micro plug,cable"Type-C interface") [1][2]	BL	BL	BL	IN	---
(105)	Silvery metal(pin,micro plug,cable"Type-C interface") [1][2]	BL	BL	BL	BL	---
(106)	Silvery metal(shell,USB plug,cable"Type-C interface") [1][2]	BL	BL	BL	BL	---
(107)	White plastic(pin holder,USB plug,cable"Type-C interface") [1][2]	BL	BL	BL	BL	BL
(108)	Silvery/golden metal(pin,USB plug,cable"Type-C interface") [1][2]	BL	BL	BL	BL	---
(109)	White plastic with black printing(sleeve,cable"Type-C interface") [1][2]	BL	BL	BL	BL	BL
(110)	Fuchsia plastic(wire jacket,cable"Type-C interface") [1][2]	BL	BL	BL	BL	BL
(111)	Black plastic(wire jacket,cable"Type-C interface") [1][2]	BL	BL	BL	BL	BL
(112)	Silvery metal(wire,cable"Type-C interface") [1][2]	BL	BL	BL	BL	---
(113)	Black plastic with white printing(shell,capacitor"EC2",PCB"E237305") [1][2][3][4][5][6][7]	BL	BL	BL	BL	BL
(114)	Silvery metal(shell,capacitor"EC2",PCB"E237305") [1][2][3][4][5][6][7]	BL	BL	BL	BL	---
(115)	Brown paper with liquid(film,capacitor"EC2",PCB"E237305") [1][2][3][4][5][6][7]	BL	BL	BL	BL	BL
(116)	Transparent plastic(film,capacitor"EC2",PCB"E237305") [1][2][3][4][5][6][7]	BL	BL	BL	BL	BL
(117)	Green plastic with golden printing(shell,capacitor"EC5",PCB"E237305") [1][2][3][4][5][6][7]	BL	BL	BL	BL	BL
(118)	Green plastic with white printing(shell,capacitor"EC3",PCB"E237305") [1][2][3][4][5][6][7]	BL	BL	BL	BL	BL
(119)	Black plastic(holder,transformer,PCB"E237305") [1][2][3][4][5][6][7]	BL	BL	BL	BL	BL
(120)	Black magnet(core,transformer,PCB"E237305") [1][2][3][4][5][6][7]	BL	BL	BL	BL	BL
(121)	Yellow plastic with black printing(wrappage,transformer,PCB"E237305") [1][2][3][4][5][6][7]	BL	BL	BL	BL	BL
(122)	Copperty metal(coil,transformer,PCB"E237305") [1][2][3][4][5][6][7]	BL	BL	BL	BL	---
(123)	Yellow/transparent soft plastic(wire jacket,transformer,PCB"E237305") [1][2][3][4][5][6][7]	BL	BL	BL	BL	BL

TEST REPORT

Report No.: XMTN3220421-15546E

Date: June 02, 2022

Page 8 of 34

Seq No.	Tested Part(s)	Result				
		Pb	Cd	Hg	Cr	Br
(124)	Transparent soft plastic(sleeve,transformer,PCB"E237305") [1][2][3][4][5][6][7]	BL	BL	BL	BL	BL
(125)	Silvery metal(shell,USB socket,PCB"E237305") [1][2][3][4][5][6][7]	BL	BL	BL	BL	---
(126)	White plastic(pin holder,USB socket,PCB"E237305") [1][2][3][4][5][6][7]	BL	BL	BL	BL	BL
(127)	Silvery metal(pin,USB socket,PCB"E237305") [1][2][3][4][5][6][7]	BL	BL	BL	BL	---
(128)	Black plastic(wrappage,fuse,PCB"E237305") [1][2][3][4][5][6][7]	BL	BL	BL	BL	BL
(129)	Grey body(fuse,PCB"E237305") [1][2][3][4][5][6][7]	BL	BL	BL	BL	BL
(130)	Silvery metal(pin,fuse,PCB"E237305") [1][2][3][4][5][6][7]	BL	BL	BL	BL	---
(131)	Green body(inductor,PCB"E237305") [1][2][3][4][5][6][7]	BL	BL	BL	BL	BL
(132)	White glue(sticker,PCB"E237305",adapter"KA0601A-0501000EUU") [1][2][3][4][5][6][7]	BL	BL	BL	BL	BL
(133)*	Green PCB(PCB"E237305",adapter"KA0601A-0501000EUU") [1][2][3][4][5][6][7]	BL	BL	BL	BL	IN
(134)	Silvery solder(PCB"E237305",adapter"KA0601A-0501000EUU") [1][2][3][4][5][6][7]	BL	BL	BL	BL	---
(135)*#1	Silvery metal(pin,adapter"KA0601A-0501000EUU") [1][2][3][4][5][6][7]	OL	BL	BL	BL	---
(136)	Black plastic with white printing(wire jacket,adapter"KA0601A-0501000EUU") [1][2][3][4][5][6][7]	BL	BL	BL	BL	BL
(137)	Red plastic with black printing(wire jacket,adapter"KA0601A-0501000EUU") [1][2][3][4][5][6][7]	BL	BL	BL	BL	BL
(138)	White plastic with black printing(shell,adapter"KA0601A-0501000EUU") [1][2][3][4][5][6][7]	BL	BL	BL	BL	BL
(139)	Transparent plastic(feeding-bottle,Electric breast pump"DPS-8011") [2][7]	BL	BL	BL	BL	BL
(140)	Yellow plastic(bottom,feeding-bottle,Electric breast pump"DPS-8011") [2][7]	BL	BL	BL	BL	BL
(141)	Transparent soft plastic(duckbill valve,Electric breast pump"DPS-8011") [2][4][5][6][7]	BL	BL	BL	BL	BL
(142)	Transparent soft plastic(massage cushion,Electric breast pump"DPS-8011") [2][4][5][6][7]	BL	BL	BL	BL	BL
(143)	Transparent plastic(sucking cover,Electric breast pump"DPS-8011") [2][4][5][6][7]	BL	BL	BL	BL	BL
(144)	Ttranslucent plastic(three-way device,Electric breast pump"DPS-8011") [2][4][5][6][7]	BL	BL	BL	BL	BL
(145)	White plastic(shell,host,Electric breast pump"DPS-8011") [2]	BL	BL	BL	BL	BL
(146)	Yellow plastic(shell,host,Electric breast pump"DPS-8011") [2]	BL	BL	BL	BL	BL
(147)	Yellow plastic(package edge,host,Electric breast pump"DPS-8011") [2]	BL	BL	BL	BL	BL
(148)	Transparent plastic without coating(operating panel,host,Electric breast pump"DPS-8011") [2][4][5][6][7]	BL	BL	BL	BL	BL
(149)	Yellow/white/black coating(operating panel,host,Electric breast pump"DPS-8011") [2]	BL	BL	BL	BL	BL

TEST REPORT

Report No.: XMTN3220421-15546E

Date: June 02, 2022

Page 9 of 34

Seq No.	Tested Part(s)	Result				
		Pb	Cd	Hg	Cr	Br
(150)	Transparent glue(sticker,operating panel,host,Electric breast pump"DPS-8011") [2][4][5][6]	BL	BL	BL	BL	BL
(151)*	Green PCB(PCB"011a v1.0",Electric breast pump"DPS-8011") [2]	BL	BL	BL	BL	IN
(152)	Silvery solder(PCB"011a v1.0",Electric breast pump"DPS-8011") [2]	BL	BL	BL	BL	---
(153)	White adhesive paper(sticker,battery,Electric breast pump"DPS-8011") [2][3][7]	BL	BL	BL	BL	BL
(154)	Blue adhesive plastic(sticker,battery,Electric breast pump"DPS-8011") [2][3][4][5][6][7]	BL	BL	BL	BL	BL
(155)	Blue plastic with black printing(wrappage,battery,Electric breast pump"DPS-8011") [2][3][4][5][6][7]	BL	BL	BL	BL	BL
(156)	Transparent plastic with black/yellow coating(sticker,LED1,PCB"01.02.10.0141 8011") [2][4][5][6]	BL	BL	BL	BL	BL
(157)	White plastic with black printing(shell,LED1,PCB"01.02.10.0141 8011") [2][4][5][6]	BL	BL	BL	BL	BL
(158)*	Transparent plastic(digital tube,LED1,PCB"01.02.10.0141 8011") [2][4][5][6]	BL	BL	BL	BL	IN
(159)*	Black PCB(PCB,LED1,PCB"01.02.10.0141 8011") [2][4][5][6]	BL	BL	BL	BL	IN
(160)*	Green PCB(PCB"01.02.10.0141 8011",Electric breast pump"DPS-8011") [2]	BL	BL	BL	BL	IN
(161)	Silvery solder(PCB"01.02.10.0141 8011",Electric breast pump"DPS-8011") [2]	BL	BL	BL	BL	---
(162)	White plastic with black printing(shell,host,Electric breast pump"DPS-8010") [3]	BL	BL	BL	BL	BL
(163)*	Silvery metal(screw,host,Electric breast pump"DPS-8010") [3]	BL	BL	BL	IN	---
(164)	Silvery metal with black coating(screw,PCB"01.02.10.0155",Electric breast pump"DPS-8010") [3]	BL	BL	BL	BL	---
(165)	Yellow soft plastic(key,host,Electric breast pump"DPS-8010") [3]	BL	BL	BL	BL	BL
(166)	Transparent plastic with black coating with glue(display,host,Electric breast pump"DPS-8010") [3]	BL	BL	BL	BL	BL
(167)	Silvery adhesive plastic(sticker,display,host,Electric breast pump"DPS-8010") [3]	BL	BL	BL	BL	BL
(168)*	Silvery metal(shell,button,PCB"01.02.10.0155") [3]	BL	BL	BL	IN	---
(169)*	Silvery metal(foil,button,PCB"01.02.10.0155") [3]	BL	BL	BL	IN	---
(170)	Silvery/coppery metal(connection strap,button,PCB"01.02.10.0155") [3]	BL	BL	BL	BL	---
(171)	Black plastic(base,button,PCB"01.02.10.0155") [3]	BL	BL	BL	BL	BL
(172)	Silvery metal(shell,socket"CN1",PCB"01.02.10.0155") [3][4][5][6]	BL	BL	BL	BL	---
(173)	Black plastic(pin holder,socket"CN1",PCB"01.02.10.0155") [3][4][5][6]	BL	BL	BL	BL	BL
(174)	Silvery/golden metal(pin,socket"CN1",PCB"01.02.10.0155") [3][4][5][6]	BL	BL	BL	BL	---
(175)*	Green PCB(PCB"01.02.10.0155",Electric breast pump"DPS-8010") [3]	BL	BL	BL	BL	IN
(176)	Silvery solder(PCB"01.02.10.0155",Electric breast pump"DPS-8010") [3]	BL	BL	BL	BL	---
(177)	White plastic(shell,micro plug,cable"Micro USB interface") [3][4][5][6]	BL	BL	BL	BL	BL

TEST REPORT

Report No.: XMTN3220421-15546E

Date: June 02, 2022

Page 10 of 34

Seq No.	Tested Part(s)	Result				
		Pb	Cd	Hg	Cr	Br
(178)*	Black plastic(pin holder,micro plug,cable"Micro USB interface") [3][4][5][6]	BL	BL	BL	BL	IN
(179)*	Silvery metal(shell,micro plug,cable"Micro USB interface") [3][4][5][6]	BL	BL	BL	IN	---
(180)*	Silvery metal(connection strap,micro plug,cable"Micro USB interface") [3][4][5][6]	BL	BL	BL	IN	---
(181)	Silvery metal(pin,micro plug,cable"Micro USB interface") [3][4][5][6]	BL	BL	BL	BL	---
(182)	Silvery solder(pin,micro plug,cable"Micro USB interface") [3][4][5][6]	BL	BL	BL	BL	---
(183)	White plastic(pin holder,USB plug,cable"Micro USB interface") [3][4][5][6]	BL	BL	BL	BL	BL
(184)	Silvery metal(shell,USB plug,cable"Micro USB interface") [3][4][5][6]	BL	BL	BL	BL	---
(185)	Golden/silvery metal(pin,USB plug,cable"Micro USB interface") [3][4][5][6]	BL	BL	BL	BL	---
(186)	White plastic with black printing(sleeve,cable"Micro USB interface") [3][4][5][6]	BL	BL	BL	BL	BL
(187)	Red plastic(wire jacket,cable"Micro USB interface") [3][4][5][6]	BL	BL	BL	BL	BL
(188)	Black plastic(wire jacket,cable"Micro USB interface") [3][4][5][6]	BL	BL	BL	BL	BL
(189)	Coppery metal(wire,cable"Micro USB interface") [3][4][5][6]	BL	BL	BL	BL	---
(190)	Transparent plastic with yellow printing(feeding-bottle,Electric breast pump"DPS-8009") [4][5][6]	BL	BL	BL	BL	BL
(191)	White plastic(cap,three-way device,Electric breast pump"DPS-8009") [4][5][6]	BL	BL	BL	BL	BL
(192)	Yellow plastic(holder,nipple,Electric breast pump"DPS-8009") [4][5][6]	BL	BL	BL	BL	BL
(193)	Transparent plastic(cap,nipple,Electric breast pump"DPS-8009") [4][5][6]	BL	BL	BL	BL	BL
(194)	Transparent soft plastic(nipple,Electric breast pump"DPS-8009") [4][5][6]	BL	BL	BL	BL	BL
(195)	White plastic(pacifier needle,Electric breast pump"DPS-8009") [4][5][6]	BL	BL	BL	BL	BL
(196)	White plastic(shell,host,Electric breast pump"DPS-8009") [4][5][6]	BL	BL	BL	BL	BL
(197)	White soft plastic(non-slip mat,host,Electric breast pump"DPS-8009") [4][5][6]	BL	BL	BL	BL	BL
(198)	Transparent double faced adhesive tape(sticker,host,Electric breast pump"DPS-8009") [4][5][6]	BL	BL	BL	BL	BL
(199)	Yellow soft plastic(gasket,host,Electric breast pump"DPS-8009") [4][5][6]	BL	BL	BL	BL	BL
(200)	Grey/white/black coating(operating panel,host,Electric breast pump"DPS-8009") [4][5]	BL	BL	BL	BL	BL
(201)	Silvery metal(shell,switch,PCB"01.02.10.0153 8009") [4][5][6]	BL	BL	BL	BL	---
(202)	White plastic(key,switch,PCB"01.02.10.0153 8009") [4][5][6]	BL	BL	BL	BL	BL
(203)*	Silvery metal(foil,switch,PCB"01.02.10.0153 8009") [4][5][6]	BL	BL	BL	IN	---
(204)	Silvery metal(connection strap,switch,PCB"01.02.10.0153 8009") [4][5][6]	BL	BL	BL	BL	---
(205)	Black plastic(base,switch,PCB"01.02.10.0153 8009") [4][5][6]	BL	BL	BL	BL	BL
(206)*	Green PCB(PCB"01.02.10.0153 8009",Electric breast pump"DPS-8009") [4][5][6]	BL	BL	BL	BL	IN

TEST REPORT

Report No.: XMTN3220421-15546E

Date: June 02, 2022

Page 11 of 34

Seq No.	Tested Part(s)	Result				
		Pb	Cd	Hg	Cr	Br
(207)	Silvery solder(PCB"01.02.10.0153 8009",Electric breast pump"DPS-8009") [4][5][6]	BL	BL	BL	BL	---
(208)	White translucent soft plastic(pipe,Electric breast pump"DPS-8009") [4][5][6][7]	BL	BL	BL	BL	BL
(209)	White plastic(holder,pipe,Electric breast pump"DPS-8009") [4][5][6][7]	BL	BL	BL	BL	BL
(210)	White plastic with red printing(label,pipe,Electric breast pump"DPS-8009") [4][5][6][7]	BL	BL	BL	BL	BL
(211)	Pink/white coating(operating panel,host,Electric breast pump"DPS-8009-2") [6]	BL	BL	BL	BL	BL
(212)	White plastic(shell,host,Electric breast pump"DPS-8008") [7]	BL	BL	BL	BL	BL
(213)	White/yellow coating(operating panel,host,Electric breast pump"DPS-8008") [7]	BL	BL	BL	BL	BL
(214)	White double faced adhesive tape(sticker,operating panel,host,Electric breast pump"DPS-8008") [7]	BL	BL	BL	BL	BL
(215)	White soft plastic(non-slip mat,host,Electric breast pump"DPS-8008") [7]	BL	BL	BL	BL	BL
(216)	Silvery metal with black coating(screw,PCB"01.02.10.0154 8008",Electric breast pump"DPS-8008") [7]	BL	BL	BL	BL	---
(217)	White plastic(ribbon,host,Electric breast pump"DPS-8008") [7]	BL	BL	BL	BL	BL
(218)	White adhesive plastic with black/yellow coating(sticker,LED,PCB"01.02.10.0154 8008") [7]	BL	BL	BL	BL	BL
(219)	White plastic(frame,LED,PCB"01.02.10.0154 8008") [7]	BL	BL	BL	BL	BL
(220)*	Black PCB(PCB,LED,PCB"01.02.10.0154 8008") [7]	BL	BL	BL	BL	IN
(221)*	Beige plastic(pin holder,socket"CN1",PCB"01.02.10.0154 8008") [7]	BL	BL	BL	BL	IN
(222)	Silvery metal(connection strap,socket"CN1",PCB"01.02.10.0154 8008") [7]	BL	BL	BL	BL	---
(223)	Silvery metal(pin,socket"CN1",PCB"01.02.10.0154 8008") [7]	BL	BL	BL	BL	---
(224)*	Green PCB(PCB"01.02.10.0154 8008",Electric breast pump"DPS-8008") [7]	BL	BL	BL	BL	IN
(225)	Silvery solder(PCB"01.02.10.0154 8008",Electric breast pump"DPS-8008") [7]	BL	BL	BL	BL	---
(226)	Silvery metal(pin,charging slot,Electric breast pump"DPS-8008") [7]	BL	BL	BL	BL	---
(227)	Silvery metal(connection strap,charging slot,Electric breast pump"DPS-8008") [7]	BL	BL	BL	BL	---
(228)	Silvery solder(connection strap,charging slot,Electric breast pump"DPS-8008") [7]	BL	BL	BL	BL	---
(229)*	Black plastic(pin holder,charging slot,Electric breast pump"DPS-8008") [7]	BL	BL	BL	BL	IN
(230)	White plastic(shell,plug,cable"Round hole interface") [7]	BL	BL	BL	BL	BL
(231)	Silvery metal(shell,plug,cable"Round hole interface") [7]	BL	BL	BL	BL	---
(232)	Silvery solder(shell,plug,cable"Round hole interface") [7]	BL	BL	BL	BL	---
(233)*	Black plastic(pin holder,plug,cable"Round hole interface") [7]	BL	BL	BL	BL	IN
(234)	Silvery metal(pin,plug,cable"Round hole interface") [7]	BL	BL	BL	BL	---
(235)	Silvery metal(shell,USB plug,cable"Round hole interface") [7]	BL	BL	BL	BL	---

TEST REPORT

Report No.: XMTN3220421-15546E

Date: June 02, 2022

Page 12 of 34

Seq No.	Tested Part(s)	Result				
		Pb	Cd	Hg	Cr	Br
(236)	White plastic(pin holder,USB plug,cable"Round hole interface") [7]	BL	BL	BL	BL	BL
(237)	Silvery/golden metal(pin,USB plug,cable"Round hole interface") [7]	BL	BL	BL	BL	---
(238)	White plastic with black printing(sleeve,cable"round hole interface") [7]	BL	BL	BL	BL	BL
(239)	Red plastic(wire jacket,cable"round hole interface") [7]	BL	BL	BL	BL	BL
(240)	Black plastic(wire jacket,cable"round hole interface") [7]	BL	BL	BL	BL	BL
(241)	Coppery metal(wire,cable"round hole interface") [7]	BL	BL	BL	BL	---
(242)	White plastic with black printing(shell,adapter"KA0601A-0501000BSU") [7]	BL	BL	BL	BL	BL
(243)	Black adhesive plastic(spacer,adapter"KA0601A-0501000BSU") [7]	BL	BL	BL	BL	BL
(244)*#1	Silvery metal(pin,adapter"KA0601A-0501000BSU") [7]	OL	BL	BL	BL	---
(245)	White plastic with black printing(shell,adapter"KA0601A-0501000INU") [7]	BL	BL	BL	BL	BL
(246)*#1	Silvery metal(pin,adapter"KA0601A-0501000INU") [7]	OL	BL	BL	BL	---
(247)	Brown plastic with golden printing(shell,capacitor"EC1",PCB"KA0601A") [7]	BL	BL	BL	BL	BL
(248)	Purple plastic with black printing(shell,capacitor"EC3",PCB"KA0601A") [7]	BL	BL	BL	BL	BL
(249)	Green plastic with black printing(shell,capacitor"EC5",PCB"KA0601A") [7]	BL	BL	BL	BL	BL
(250)*	Green PCB(PCB"KA0601A",adapter"KA0601A-0501000INU") [7]	BL	BL	BL	BL	IN
(251)	Silvery solder(PCB"KA0601A",adapter"KA0601A-0501000INU") [7]	BL	BL	BL	BL	---
(252)	White plastic with black printing(shell,adapter"KA25-0501000EU") [1][2][3][4][5][6][7]	BL	BL	BL	BL	BL
(253)*#1	Silvery metal(pin,adapter"KA25-0501000EU") [1][2][3][4][5][6][7]	OL	BL	BL	BL	---
(254)	White plastic(pin holder,adapter"KA25-0501000EU") [1][2][3][4][5][6][7]	BL	BL	BL	BL	BL
(255)*	Silvery metal(connection strap,adapter"KA25-0501000EU") [1][2][3][4][5][6][7]	BL	BL	BL	IN	---
(256)	Brown body(capacitor,PCB"KA25-A REV:3.0") [1][2][3][4][5][6][7]	BL	BL	BL	BL	BL
(257)*	Black body(resistor,PCB"KA25-A REV:3.0") [1][2][3][4][5][6][7]	OL	BL	BL	IN	BL
(258)*#2	Black body(diode,PCB"KA25-A REV:3.0") [1][2][3][4][5][6][7]	OL	BL	BL	BL	IN
(259)	Black body(IC"U1",PCB"KA25-A REV:3.0") [1][2][3][4][5][6][7]	BL	BL	BL	BL	BL
(260)	Green body(inductor,PCB"KA25-A REV:3.0") [1][2][3][4][5][6][7]	BL	BL	BL	BL	BL
(261)	Silvery metal(pin,inductor,PCB"KA25-A REV:3.0") [1][2][3][4][5][6][7]	BL	BL	BL	BL	---
(262)	Black plastic with white printing(shell,resistor,PCB"KA25-A REV:3.0") [1][2][3][4][5][6][7]	BL	BL	BL	BL	BL
(263)	Grey body(resistor,PCB"KA25-A REV:3.0") [1][2][3][4][5][6][7]	BL	BL	BL	BL	BL
(264)	Transparent glue(sticker,PCB"KA25-A REV:3.0") [1][2][3][4][5][6][7]	BL	BL	BL	BL	BL

TEST REPORT

Report No.: XMTN3220421-15546E

Date: June 02, 2022

Page 13 of 34

Seq No.	Tested Part(s)	Result				
		Pb	Cd	Hg	Cr	Br
(265)	Black plastic with white printing(shell,capacitor"C1",PCB"KA25-A REV:3.0") [1][2][3][4][5][6][7]	BL	BL	BL	BL	BL
(266)	Silvery metal(shell,capacitor"C1",PCB"KA25-A REV:3.0") [1][2][3][4][5][6][7]	BL	BL	BL	BL	---
(267)	Black plastic(base,capacitor"C1",PCB"KA25-A REV:3.0") [1][2][3][4][5][6][7]	BL	BL	BL	BL	BL
(268)	Brown paper with liquid(film,capacitor"C1",PCB"KA25-A REV:3.0") [1][2][3][4][5][6][7]	BL	BL	BL	BL	BL
(269)	Transparent plastic(film,capacitor"C1",PCB"KA25-A REV:3.0") [1][2][3][4][5][6][7]	BL	BL	BL	BL	BL
(270)	Silvery metal(connector,capacitor"C1",PCB"KA25-A REV:3.0") [1][2][3][4][5][6][7]	BL	BL	BL	BL	---
(271)	Silvery metal(pin,capacitor"C1",PCB"KA25-A REV:3.0") [1][2][3][4][5][6][7]	BL	BL	BL	BL	---
(272)	Silvery metal(foil,capacitor"C1",PCB"KA25-A REV:3.0") [1][2][3][4][5][6][7]	BL	BL	BL	BL	---
(273)	Dull silvery metal(foil,capacitor"C1",PCB"KA25-A REV:3.0") [1][2][3][4][5][6][7]	BL	BL	BL	BL	---
(274)*	Silvery metal with red printing(shell,capacitor"C9",PCB"KA25-A REV:3.0") [1][2][3][4][5][6][7]	BL	BL	BL	IN	---
(275)	Silvery metal with black coating(foil,capacitor"C9",PCB"KA25-A REV:3.0") [1][2][3][4][5][6][7]	BL	BL	BL	BL	---
(276)	Brown plastic with white printing(shell,capacitor"C8",PCB"KA25-A REV:3.0") [1][2][3][4][5][6][7]	BL	BL	BL	BL	BL
(277)	Silvery metal(pin,transformer,PCB"KA25-A REV:3.0") [1][2][3][4][5][6][7]	BL	BL	BL	BL	---
(278)	Transparent adhesive plastic with black printing(sticker,transformer,PCB"KA25-A REV:3.0") [1][2][3][4][5][6][7]	BL	BL	BL	BL	BL
(279)	Yellow plastic(wrappage,transformer,PCB"KA25-A REV:3.0") [1][2][3][4][5][6][7]	BL	BL	BL	BL	BL
(280)	Coppery metal(sticker,transformer,PCB"KA25-A REV:3.0") [1][2][3][4][5][6][7]	BL	BL	BL	BL	---
(281)	Yellow/transparent soft plastic(wire jacket,transformer,PCB"KA25-A REV:3.0") [1][2][3][4][5][6][7]	BL	BL	BL	BL	BL
(282)	Black plastic(holder,transformer,PCB"KA25-A REV:3.0") [1][2][3][4][5][6][7]	BL	BL	BL	BL	BL
(283)	Coppery metal(coil,transformer,PCB"KA25-A REV:3.0") [1][2][3][4][5][6][7]	BL	BL	BL	BL	---
(284)	Black magnet(core,transformer,PCB"KA25-A REV:3.0") [1][2][3][4][5][6][7]	BL	BL	BL	BL	BL
(285)	White glue(sticker,PCB"KA25-A REV:3.0") [1][2][3][4][5][6][7]	BL	BL	BL	BL	BL
(286)	Silvery metal(pin,USB socket,PCB"KA25-A REV:3.0") [1][2][3][4][5][6][7]	BL	BL	BL	BL	---
(287)*	White plastic(pin holder,USB socket,PCB"KA25-A REV:3.0") [1][2][3][4][5][6][7]	BL	BL	BL	BL	IN
(288)	Silvery metal(shell,USB socket,PCB"KA25-A REV:3.0") [1][2][3][4][5][6][7]	BL	BL	BL	BL	---
(289)*	Green PCB(PCB"KA25-A REV:3.0",adapter"KA25-0501000EU") [1][2][3][4][5][6][7]	BL	BL	BL	BL	IN

TEST REPORT

Report No.: XMTN3220421-15546E

Date: June 02, 2022

Page 14 of 34

Seq No.	Tested Part(s)	Result				
		Pb	Cd	Hg	Cr	Br
(290)	Silvery solder(PCB"KA25-A REV:3.0",adapter"KA25-0501000EU") [1][2][3][4][5][6][7]	BL	BL	BL	BL	---

Note:

[1]DPS-8012

[2]DPS-8011

[3]DPS-8010

[4]DPS-8009

[5]DPS-8009-1

[6]DPS-8009-2

[7]DPS-8008

Note:

--- = Not Applicable.

* = Screening by XRF and detected by chemical method. The test result of chemical method please refer to next pages.

*1 = As claimed by the material declaration submitted by the client, the materials of the sample No. 135,244,246,253 are copper alloy. And according to RoHS directive 2011/65/EU and its amendments, Lead is exempted as an alloying element in Copper containing up to 4% (40000 ppm) by weight.

*2 = As claimed by the material declaration submitted by the client, the materials of the sample No. 18,19,258 are glass of electronic components. And according to RoHS directive 2011/65/EU and its amendments, Lead is exempted in glass of cathode ray tubes, electronic components and fluorescent tubes.

- The test result of samples (42),(229) are shown retest result, and the retest sample was provided by client on May 25, 2022.

TEST REPORT

Report No.: XMTN3220421-15546E

Date: June 02, 2022

Page 15 of 34

Remark:

i Result were obtained by XRF for primary screening, and further chemical testing by ICP (for Cd, Pb, Hg), UV-Vis (for Cr(VI)) and GC-MS (for PBBs, PBDEs) are recommended to be performed, if the concentration exceeds the below warning value according to IEC62321-3-1:2013.

Element	Unit	Polymers	Metal	Composite Material
Cd	mg/kg	BL≤70-3σ<X <130+3σ≤OL	BL≤70-3σ<X <130+3σ≤OL	BL≤50-3σ<X <150+3σ≤OL
Pb	mg/kg	BL≤700-3σ<X <1300+3σ≤OL	BL≤700-3σ<X <1300+3σ≤OL	BL≤500-3σ<X <1500+3σ≤OL
Hg	mg/kg	BL≤700-3σ<X <1300+3σ≤OL	BL≤700-3σ<X <1300+3σ≤OL	BL≤500-3σ<X <1500+3σ≤OL
Cr	mg/kg	BL≤700-3σ<X	BL≤700-3σ<X	BL≤500-3σ<X
Br	mg/kg	BL≤300-3σ<X	--	BL≤250-3σ<X

Note:

BL = Below Limit

OL = Over Limit

IN / X = Inconclusive (questionable, need further chemical analysis)

ii The XRF screening test for RoHS elements – The reading may be different to the actual content in the sample be of non-uniformity composition.

iii The maximum permissible limit is quoted from the RoHS directive 2011/65/EU:

RoHS Restricted Substances	Maximum Concentration Value (mg/kg) (by weight in homogenous materials)
Cadmium (Cd)	100
Lead (Pb)	1000
Mercury (Hg)	1000
Hexavalent Chromium (Cr(VI))	1000
Polybrominated biphenyls (PBBs)	1000
Polybrominated diphenylethers (PBDEs)	1000

Disclaimers:

This XRF Screening report is for reference purposes only. The applicant shall make its/his/her own judgment as to whether the information provided in this XRF screening report is sufficient for its/his/her purposes.

The result shown in this XRF screening report will differ based on various factors, including but not limited to, the sample size, thickness, area, surface flatness, equipment parameters and matrix effect (e.g. plastic, rubber, metal, glass, ceramic etc.). Further wet chemical pre-treatment with relevant chemical equipment analysis are required to obtain quantitative data.

TEST REPORT

Report No.: XMTN3220421-15546E

Date: June 02, 2022

Page 16 of 34

A.2 Wet Chemical Testing

A.2.1 Total Lead content

Test method: IEC 62321-5:2013

Item	Unit	RL	Result				Limit
			(257)				
Lead(Pb)	mg/kg	10	553				1000
Conclusion	/	/	Pass				/

Test method: IEC 62321-5:2013

Item	Unit	RL	Result				Limit
			(18)	(19)	(135)	(244)	
Lead(Pb)	mg/kg	10	1503	30281	15104	16481	

Item	Unit	RL	Result			Limit
			(246)	(253)	(258)	
Lead(Pb)	mg/kg	10	12884	11055	12056	

A.2.2 Chromium VI (CrVI) content

Test method: IEC 62321-7-1:2015

Item	Unit	RL	Result						Limit
			(5)	(45)	(46)	(61)	(73)	(74)	
hexavalent chromium(Cr VI)	µg/cm ²	0.10	N.D.	N.D.	N.D.	N.D.	N.D.	N.D.	See Remark
Conclusion	/	/	Pass	Pass	Pass	Pass	Pass	Pass	/

Item	Unit	RL	Result						Limit
			(84)	(96)	(100)	(104)	(163)	(168)	
hexavalent chromium(Cr VI)	µg/cm ²	0.10	N.D.	N.D.	N.D.	N.D.	N.D.	N.D.	See Remark
Conclusion	/	/	Pass	Pass	Pass	Pass	Pass	Pass	/

Item	Unit	RL	Result						Limit
			(169)	(179)	(180)	(203)	(255)	(274)	
hexavalent chromium(Cr VI)	µg/cm ²	0.10	N.D.	N.D.	N.D.	N.D.	N.D.	N.D.	See Remark
Conclusion	/	/	Pass	Pass	Pass	Pass	Pass	Pass	/

TEST REPORT

Report No.: XMTN3220421-15546E

Date: June 02, 2022

Page 17 of 34

Limit Remark:

- a. The sample is positive for CrVI if the CrVI concentration is greater than 0.13µg/cm². The sample coating is considered to contain CrVI
 - b. The sample is negative for CrVI if CrVI is ND (concentration less than 0.10µg/cm²). The coating is considered a non-CrVI based coating
 - c. The result between 0.10µg/cm² and 0.13µg/cm² is considered to be inconclusive -unavoidable coating variations may influence the determination
- For corrosion protection coatings on metals: Information on storage conditions and production date of the tested sample is unavailable and thus results of Cr(VI) represent status of the sample at the time of testing.

Test method: IEC 62321-7-2:2017

Item	Unit	RL	Result					Limit
			(257)					
hexavalent chromium(Cr VI)	mg/kg	10	N.D.					1000
Conclusion	/	/	Pass					/

A.2.3 PBBs & PBDEs content

Test method: IEC 62321-6:2015

Item	Unit	RL	Result						Limit
			(11)	(18)	(41)	(92)	(102)	(133)	
Monobromobiphenyl (MonoBB)	mg/kg	100	N.D.	N.D.	N.D.	N.D.	N.D.	N.D.	-
Dibromobiphenyl(DiBB)	mg/kg	100	N.D.	N.D.	N.D.	N.D.	N.D.	N.D.	-
Tribromobiphenyl(TriBB)	mg/kg	100	N.D.	N.D.	N.D.	N.D.	N.D.	N.D.	-
Tetrabromobiphenyl(TetraBB)	mg/kg	100	N.D.	N.D.	N.D.	N.D.	N.D.	N.D.	-
Pentabromobiphenyl(PentaBB)	mg/kg	100	N.D.	N.D.	N.D.	N.D.	N.D.	N.D.	-
Hexabromobiphenyl(HexaBB)	mg/kg	100	N.D.	N.D.	N.D.	N.D.	N.D.	N.D.	-
Heptabromobiphenyl (HeptaBB)	mg/kg	100	N.D.	N.D.	N.D.	N.D.	N.D.	N.D.	-
Octabromobiphenyl(OctaBB)	mg/kg	100	N.D.	N.D.	N.D.	N.D.	N.D.	N.D.	-
Nonabromobiphenyl(NonaBB)	mg/kg	100	N.D.	N.D.	N.D.	N.D.	N.D.	N.D.	-
Decabromobiphenyl(DecaBB)	mg/kg	100	N.D.	N.D.	N.D.	N.D.	N.D.	N.D.	-
Monobromodiphenyl ether (MonoBDE)	mg/kg	100	N.D.	N.D.	N.D.	N.D.	N.D.	N.D.	-
Dibromodiphenyl ether (DiBDE)	mg/kg	100	N.D.	N.D.	N.D.	N.D.	N.D.	N.D.	-
Tribromodiphenyl ether (TriBDE)	mg/kg	100	N.D.	N.D.	N.D.	N.D.	N.D.	N.D.	-
Tetrabromodiphenyl ether (TetraBDE)	mg/kg	100	N.D.	N.D.	N.D.	N.D.	N.D.	N.D.	-

TEST REPORT

Report No.: XMTN3220421-15546E

Date: June 02, 2022

Page 18 of 34

Item	Unit	RL	Result						Limit
			(11)	(18)	(41)	(92)	(102)	(133)	
Pentabromodiphenyl ether (PentaBDE)	mg/kg	100	N.D.	N.D.	N.D.	N.D.	N.D.	N.D.	-
Hexabromodiphenyl ether (HexaBDE)	mg/kg	100	N.D.	N.D.	N.D.	N.D.	N.D.	N.D.	-
Heptabromodiphenyl ether (HeptaBDE)	mg/kg	100	N.D.	N.D.	N.D.	N.D.	N.D.	N.D.	-
Octabromodiphenyl ether (OctaBDE)	mg/kg	100	N.D.	N.D.	N.D.	N.D.	N.D.	N.D.	-
Nonabromodiphenyl ether (NonaBDE)	mg/kg	100	N.D.	N.D.	N.D.	N.D.	N.D.	N.D.	-
Decabromodiphenyl ether (DecaBDE)	mg/kg	100	N.D.	N.D.	N.D.	N.D.	N.D.	N.D.	-
sum of MonoBDE, DiBDE, TriBDE, TetraBDE, PentaBDE, HexaBDE, HeptaBDE, OctaBDE, NonaBDE, DecaBDE	mg/kg	-	N.D.	N.D.	N.D.	N.D.	N.D.	N.D.	1000
sum of MonoBB, DiBB, TriBB, TetraBB, PentaBB, HexaBB, HeptaBB, OctaBB, NonaBB, DecaBB	mg/kg	-	N.D.	N.D.	N.D.	N.D.	N.D.	N.D.	1000
Conclusion	/	/	Pass	Pass	Pass	Pass	Pass	Pass	/

Item	Unit	RL	Result						Limit
			(151)	(158)	(159)	(160)	(175)	(178)	
Monobromobiphenyl (MonoBB)	mg/kg	100	N.D.	N.D.	N.D.	N.D.	N.D.	N.D.	-
Dibromobiphenyl (DiBB)	mg/kg	100	N.D.	N.D.	N.D.	N.D.	N.D.	N.D.	-
Tribromobiphenyl (TriBB)	mg/kg	100	N.D.	N.D.	N.D.	N.D.	N.D.	N.D.	-
Tetrabromobiphenyl (TetraBB)	mg/kg	100	N.D.	N.D.	N.D.	N.D.	N.D.	N.D.	-
Pentabromobiphenyl (PentaBB)	mg/kg	100	N.D.	N.D.	N.D.	N.D.	N.D.	N.D.	-
Hexabromobiphenyl (HexaBB)	mg/kg	100	N.D.	N.D.	N.D.	N.D.	N.D.	N.D.	-
Heptabromobiphenyl (HeptaBB)	mg/kg	100	N.D.	N.D.	N.D.	N.D.	N.D.	N.D.	-
Octabromobiphenyl (OctaBB)	mg/kg	100	N.D.	N.D.	N.D.	N.D.	N.D.	N.D.	-
Nonabromobiphenyl (NonaBB)	mg/kg	100	N.D.	N.D.	N.D.	N.D.	N.D.	N.D.	-
Decabromobiphenyl (DecaBB)	mg/kg	100	N.D.	N.D.	N.D.	N.D.	N.D.	N.D.	-
Monobromodiphenyl ether (MonoBDE)	mg/kg	100	N.D.	N.D.	N.D.	N.D.	N.D.	N.D.	-

TEST REPORT

Report No.: XMTN3220421-15546E

Date: June 02, 2022

Page 19 of 34

Item	Unit	RL	Result						Limit
			(151)	(158)	(159)	(160)	(175)	(178)	
Dibromodiphenyl ether (DiBDE)	mg/kg	100	N.D.	N.D.	N.D.	N.D.	N.D.	N.D.	-
Tribromodiphenyl ether (TriBDE)	mg/kg	100	N.D.	N.D.	N.D.	N.D.	N.D.	N.D.	-
Tetrabromodiphenyl ether (TetraBDE)	mg/kg	100	N.D.	N.D.	N.D.	N.D.	N.D.	N.D.	-
Pentabromodiphenyl ether (PentaBDE)	mg/kg	100	N.D.	N.D.	N.D.	N.D.	N.D.	N.D.	-
Hexabromodiphenyl ether (HexaBDE)	mg/kg	100	N.D.	N.D.	N.D.	N.D.	N.D.	N.D.	-
Heptabromodiphenyl ether (HeptaBDE)	mg/kg	100	N.D.	N.D.	N.D.	N.D.	N.D.	N.D.	-
Octabromodiphenyl ether (OctaBDE)	mg/kg	100	N.D.	N.D.	N.D.	N.D.	N.D.	N.D.	-
Nonabromodiphenyl ether (NonaBDE)	mg/kg	100	N.D.	N.D.	N.D.	N.D.	N.D.	N.D.	-
Decabromodiphenyl ether (DecaBDE)	mg/kg	100	N.D.	N.D.	N.D.	N.D.	N.D.	N.D.	-
sum of MonoBDE, DiBDE, TriBDE, TetraBDE, PentaBDE, HexaBDE, HeptaBDE, OctaBDE, NonaBDE, DecaBDE	mg/kg	-	N.D.	N.D.	N.D.	N.D.	N.D.	N.D.	1000
sum of MonoBB, DiBB, TriBB, TetraBB, PentaBB, HexaBB, HeptaBB, OctaBB, NonaBB, DecaBB	mg/kg	-	N.D.	N.D.	N.D.	N.D.	N.D.	N.D.	1000
Conclusion	/	/	Pass	Pass	Pass	Pass	Pass	Pass	/

Item	Unit	RL	Result					Limit
			(206)	(220)	(221)	(224)	(229)	
Monobromobiphenyl (MonoBB)	mg/kg	100	N.D.	N.D.	N.D.	N.D.	N.D.	-
Dibromobiphenyl (DiBB)	mg/kg	100	N.D.	N.D.	N.D.	N.D.	N.D.	-
Tribromobiphenyl (TriBB)	mg/kg	100	N.D.	N.D.	N.D.	N.D.	N.D.	-
Tetrabromobiphenyl (TetraBB)	mg/kg	100	N.D.	N.D.	N.D.	N.D.	N.D.	-
Pentabromobiphenyl (PentaBB)	mg/kg	100	N.D.	N.D.	N.D.	N.D.	N.D.	-
Hexabromobiphenyl (HexaBB)	mg/kg	100	N.D.	N.D.	N.D.	N.D.	N.D.	-

TEST REPORT

Report No.: XMTN3220421-15546E

Date: June 02, 2022

Page 20 of 34

Item	Unit	RL	Result					Limit
			(206)	(220)	(221)	(224)	(229)	
Heptabromobiphenyl (HeptaBB)	mg/kg	100	N.D.	N.D.	N.D.	N.D.	N.D.	-
Octabromobiphenyl (OctaBB)	mg/kg	100	N.D.	N.D.	N.D.	N.D.	N.D.	-
Nonabromobiphenyl (NonaBB)	mg/kg	100	N.D.	N.D.	N.D.	N.D.	N.D.	-
Decabromobiphenyl (DecaBB)	mg/kg	100	N.D.	N.D.	N.D.	N.D.	N.D.	-
Monobromodiphenyl ether (MonoBDE)	mg/kg	100	N.D.	N.D.	N.D.	N.D.	N.D.	-
Dibromodiphenyl ether (DiBDE)	mg/kg	100	N.D.	N.D.	N.D.	N.D.	N.D.	-
Tribromodiphenyl ether (TriBDE)	mg/kg	100	N.D.	N.D.	N.D.	N.D.	N.D.	-
Tetrabromodiphenyl ether (TetraBDE)	mg/kg	100	N.D.	N.D.	N.D.	N.D.	N.D.	-
Pentabromodiphenyl ether (PentaBDE)	mg/kg	100	N.D.	N.D.	N.D.	N.D.	N.D.	-
Hexabromodiphenyl ether (HexaBDE)	mg/kg	100	N.D.	N.D.	N.D.	N.D.	N.D.	-
Heptabromodiphenyl ether (HeptaBDE)	mg/kg	100	N.D.	N.D.	N.D.	N.D.	N.D.	-
Octabromodiphenyl ether (OctaBDE)	mg/kg	100	N.D.	N.D.	N.D.	N.D.	N.D.	-
Nonabromodiphenyl ether (NonaBDE)	mg/kg	100	N.D.	N.D.	N.D.	N.D.	N.D.	-
Decabromodiphenyl ether (DecaBDE)	mg/kg	100	N.D.	N.D.	N.D.	N.D.	602	-
sum of MonoBDE, DiBDE, TriBDE, TetraBDE, PentaBDE, HexaBDE, HeptaBDE, OctaBDE, NonaBDE, DecaBDE	mg/kg	-	N.D.	N.D.	N.D.	N.D.	602	1000
sum of MonoBB, DiBB, TriBB, TetraBB, PentaBB, HexaBB, HeptaBB, OctaBB, NonaBB, DecaBB	mg/kg	-	N.D.	N.D.	N.D.	N.D.	N.D.	1000
Conclusion	/	/	Pass	Pass	Pass	Pass	Pass	/

Item	Unit	RL	Result					Limit
			(233)	(250)	(258)	(287)	(289)	
Monobromobiphenyl (MonoBB)	mg/kg	100	N.D.	N.D.	N.D.	N.D.	N.D.	-

TEST REPORT

Report No.: XMTN3220421-15546E

Date: June 02, 2022

Page 21 of 34

Item	Unit	RL	Result					Limit
			(233)	(250)	(258)	(287)	(289)	
Dibromobiphenyl(DiBB)	mg/kg	100	N.D.	N.D.	N.D.	N.D.	N.D.	-
Tribromobiphenyl(TriBB)	mg/kg	100	N.D.	N.D.	N.D.	N.D.	N.D.	-
Tetrabromobiphenyl(TetraBB)	mg/kg	100	N.D.	N.D.	N.D.	N.D.	N.D.	-
Pentabromobiphenyl(PentaBB)	mg/kg	100	N.D.	N.D.	N.D.	N.D.	N.D.	-
Hexabromobiphenyl(HexaBB)	mg/kg	100	N.D.	N.D.	N.D.	N.D.	N.D.	-
Heptabromobiphenyl (HeptaBB)	mg/kg	100	N.D.	N.D.	N.D.	N.D.	N.D.	-
Octabromobiphenyl(OctaBB)	mg/kg	100	N.D.	N.D.	N.D.	N.D.	N.D.	-
Nonabromobiphenyl(NonaBB)	mg/kg	100	N.D.	N.D.	N.D.	N.D.	N.D.	-
Decabromobiphenyl(DecaBB)	mg/kg	100	N.D.	N.D.	N.D.	N.D.	N.D.	-
Monobromodiphenyl ether (MonoBDE)	mg/kg	100	N.D.	N.D.	N.D.	N.D.	N.D.	-
Dibromodiphenyl ether (DiBDE)	mg/kg	100	N.D.	N.D.	N.D.	N.D.	N.D.	-
Tribromodiphenyl ether (TriBDE)	mg/kg	100	N.D.	N.D.	N.D.	N.D.	N.D.	-
Tetrabromodiphenyl ether (TetraBDE)	mg/kg	100	N.D.	N.D.	N.D.	N.D.	N.D.	-
Pentabromodiphenyl ether (PentaBDE)	mg/kg	100	N.D.	N.D.	N.D.	N.D.	N.D.	-
Hexabromodiphenyl ether (HexaBDE)	mg/kg	100	N.D.	N.D.	N.D.	N.D.	N.D.	-
Heptabromodiphenyl ether (HeptaBDE)	mg/kg	100	N.D.	N.D.	N.D.	N.D.	N.D.	-
Octabromodiphenyl ether (OctaBDE)	mg/kg	100	N.D.	N.D.	N.D.	N.D.	N.D.	-
Nonabromodiphenyl ether (NonaBDE)	mg/kg	100	N.D.	N.D.	N.D.	N.D.	N.D.	-
Decabromodiphenyl ether (DecaBDE)	mg/kg	100	N.D.	N.D.	N.D.	N.D.	N.D.	-
sum of MonoBDE,DiBDE,TriBDE,TetraBDE,PentaBDE,HexaBDE,HeptaBDE,OctaBDE,NonaBDE,DecaBDE	mg/kg	-	N.D.	N.D.	N.D.	N.D.	N.D.	1000

TEST REPORT

Report No.: XMTN3220421-15546E

Date: June 02, 2022

Page 22 of 34

Item	Unit	RL	Result					Limit
			(233)	(250)	(258)	(287)	(289)	
sum of MonoBB,DiBB,TriBB,TetraBB,Pe ntaBB,HexaBB,HeptaBB,OctaB B,NonaBB,DecaBB	mg/kg	-	N.D.	N.D.	N.D.	N.D.	N.D.	1000
Conclusion	/	/	Pass	Pass	Pass	Pass	Pass	/

- Note:
- N.D.= Not Detected or less than RL
 - RL = Report Limit
 - mg/kg = ppm
 - The Result less than RL are not taken into account while calculating the sum contents.
 - The test result of samples (42),(229) are shown retest result, and the retest sample was provided by client on May 25, 2022.

A.3 Phthalates(DBP, BBP, DEHP, DIBP)content

Test method: IEC 62321-8:2017

Item	Unit	RL	Result						Limit
			(1)+(2)+(3) +(4)	(6)+(7)+(8) +(9)	(11)+(22)+ (24)+(26)	(13)+(14)+ (15)+(17)	(18)+(19)+ (20)+(21)	(27)	
Dibutyl Phthalate(DBP)	%	0.010	N.D.	0.011	0.029	N.D.	N.D.	0.055	0.1
Benzyl Butyl Phthalate(BBP)	%	0.010	N.D.	N.D.	N.D.	N.D.	N.D.	N.D.	0.1
Bis-(2-ethylhexyl) Phthalate (DEHP)	%	0.010	N.D.	N.D.	N.D.	N.D.	N.D.	N.D.	0.1
Diisobutyl phthalate(DIBP)	%	0.010	N.D.	N.D.	N.D.	N.D.	N.D.	N.D.	0.1
Conclusion	/	/	Pass	Pass	Pass	Pass	Pass	Pass	/

Item	Unit	RL	Result						Limit
			(33)+(35)+ (37)+(38)	(36)	(39)+(40)+ (41)+(43)	(42)	(44)+(48)+ (49)+(50)	(51)+(55)+ (57)+(58)	
Dibutyl Phthalate(DBP)	%	0.010	0.027	N.D.	0.037	N.D.	N.D.	0.013	0.1
Benzyl Butyl Phthalate(BBP)	%	0.010	N.D.	N.D.	N.D.	N.D.	N.D.	N.D.	0.1
Bis-(2-ethylhexyl) Phthalate (DEHP)	%	0.010	0.014	N.D.	N.D.	N.D.	N.D.	N.D.	0.1
Diisobutyl phthalate(DIBP)	%	0.010	N.D.	N.D.	N.D.	N.D.	N.D.	N.D.	0.1
Conclusion	/	/	Pass	Pass	Pass	Pass	Pass	Pass	/

TEST REPORT

Report No.: XMTN3220421-15546E

Date: June 02, 2022

Page 23 of 34

Item	Unit	RL	Result						Limit
			(54)	(60)	(63)+(120)	(64)	(65)	(66)	
Dibutyl Phthalate(DBP)	%	0.010	N.D.	N.D.	N.D.	0.033	0.021	N.D.	0.1
Benzyl Butyl Phthalate(BBP)	%	0.010	N.D.	N.D.	N.D.	N.D.	N.D.	N.D.	0.1
Bis-(2-ethylhexyl) Phthalate (DEHP)	%	0.010	N.D.	N.D.	N.D.	N.D.	N.D.	N.D.	0.1
Diisobutyl phthalate(DIBP)	%	0.010	N.D.	N.D.	N.D.	0.010	N.D.	N.D.	0.1
Conclusion	/	/	Pass	Pass	Pass	Pass	Pass	Pass	/

Item	Unit	RL	Result						Limit
			(67)	(71)+(72)+ (75)+(76)	(79)+(80)+ (81)+(85)	(86)	(87)	(88)	
Dibutyl Phthalate(DBP)	%	0.010	N.D.	0.026	0.044	N.D.	0.024	0.029	0.1
Benzyl Butyl Phthalate(BBP)	%	0.010	N.D.	N.D.	N.D.	N.D.	N.D.	N.D.	0.1
Bis-(2-ethylhexyl) Phthalate (DEHP)	%	0.010	N.D.	N.D.	N.D.	N.D.	N.D.	N.D.	0.1
Diisobutyl phthalate(DIBP)	%	0.010	N.D.	N.D.	N.D.	N.D.	N.D.	N.D.	0.1
Conclusion	/	/	Pass	Pass	Pass	Pass	Pass	Pass	/

Item	Unit	RL	Result						Limit
			(89)	(90)+(91)+ (92)+(97)	(94)+(129)+ (131)	(99)+(101)+ (102)+(107)	(109)+(110)+ (111)+ (113)	(115)	
Dibutyl Phthalate(DBP)	%	0.010	N.D.	0.015	N.D.	N.D.	0.013	N.D.	0.1
Benzyl Butyl Phthalate(BBP)	%	0.010	N.D.	N.D.	N.D.	N.D.	N.D.	N.D.	0.1
Bis-(2-ethylhexyl) Phthalate (DEHP)	%	0.010	N.D.	0.011	N.D.	N.D.	N.D.	N.D.	0.1
Diisobutyl phthalate(DIBP)	%	0.010	N.D.	N.D.	N.D.	N.D.	N.D.	N.D.	0.1
Conclusion	/	/	Pass	Pass	Pass	Pass	Pass	Pass	/

TEST REPORT

Report No.: XMTN3220421-15546E

Date: June 02, 2022

Page 24 of 34

Item	Unit	RL	Result						Limit
			(116)+(117) +(118)+ (119)	(121)+(123) +(124)+ (126)	(128)+(132) +(133)+ (136)	(137)+(138) +(139)+ (140)	(141)+(142) +(143)+ (144)	(145)+(146) +(147)+ (148)	
Dibutyl Phthalate(DBP)	%	0.010	0.055	0.013	0.027	N.D.	N.D.	N.D.	0.1
Benzyl Butyl Phthalate(BBP)	%	0.010	N.D.	N.D.	N.D.	N.D.	N.D.	N.D.	0.1
Bis-(2-ethylhexyl) Phthalate (DEHP)	%	0.010	N.D.	0.016	N.D.	N.D.	N.D.	N.D.	0.1
Diisobutyl phthalate(DIBP)	%	0.010	N.D.	N.D.	N.D.	N.D.	N.D.	N.D.	0.1
Conclusion	/	/	Pass	Pass	Pass	Pass	Pass	Pass	/

Item	Unit	RL	Result						Limit
			(149)+(200) +(211)+ (213)	(150)+(151) +(153)+ (154)	(155)+(156) +(157)+ (158)	(159)+(160) +(162)+ (165)	(166)+(167) +(171)+ (173)	(175)+(177) +(178)+ (183)	
Dibutyl Phthalate(DBP)	%	0.010	0.022	0.025	0.028	N.D.	0.036	N.D.	0.1
Benzyl Butyl Phthalate(BBP)	%	0.010	N.D.	N.D.	N.D.	N.D.	N.D.	N.D.	0.1
Bis-(2-ethylhexyl) Phthalate (DEHP)	%	0.010	N.D.	N.D.	N.D.	N.D.	N.D.	N.D.	0.1
Diisobutyl phthalate(DIBP)	%	0.010	N.D.	N.D.	N.D.	N.D.	N.D.	N.D.	0.1
Conclusion	/	/	Pass	Pass	Pass	Pass	Pass	Pass	/

Item	Unit	RL	Result						Limit
			(186)+(187) +(188)+ (190)	(191)+(192) +(193)+ (194)	(195)+(196) +(197)+ (198)	(199)+(202) +(205)+ (206)	(208)+(209) +(210)+ (212)	(214)+(215) +(217)+ (218)	
Dibutyl Phthalate(DBP)	%	0.010	0.012	N.D.	N.D.	N.D.	N.D.	N.D.	0.1
Benzyl Butyl Phthalate(BBP)	%	0.010	N.D.	N.D.	N.D.	N.D.	N.D.	N.D.	0.1
Bis-(2-ethylhexyl) Phthalate (DEHP)	%	0.010	N.D.	N.D.	N.D.	N.D.	N.D.	N.D.	0.1
Diisobutyl phthalate(DIBP)	%	0.010	N.D.	N.D.	N.D.	N.D.	N.D.	N.D.	0.1
Conclusion	/	/	Pass	Pass	Pass	Pass	Pass	Pass	/

TEST REPORT

Report No.: XMTN3220421-15546E

Date: June 02, 2022

Page 25 of 34

Item	Unit	RL	Result						Limit
			(219)+(220) +(221)+ (224)	(229)	(230)+(233) +(236)	(238)	(239)	(240)	
Dibutyl Phthalate(DBP)	%	0.010	N.D.	N.D.	0.016	0.076	0.025	0.022	0.1
Benzyl Butyl Phthalate(BBP)	%	0.010	N.D.	N.D.	N.D.	N.D.	N.D.	N.D.	0.1
Bis-(2-ethylhexyl) Phthalate (DEHP)	%	0.010	N.D.	N.D.	N.D.	N.D.	N.D.	N.D.	0.1
Diisobutyl phthalate(DIBP)	%	0.010	N.D.	N.D.	N.D.	N.D.	N.D.	N.D.	0.1
Conclusion	/	/	Pass	Pass	Pass	Pass	Pass	Pass	/

Item	Unit	RL	Result						Limit
			(242)	(243)+(245) +(247)	(248)+(249) +(250)	(252)+(254) +(262)+ (264)	(256)+(257) +(258)	(259)+(260) +(263)	
Dibutyl Phthalate(DBP)	%	0.010	N.D.	N.D.	N.D.	N.D.	N.D.	N.D.	0.1
Benzyl Butyl Phthalate(BBP)	%	0.010	N.D.	N.D.	N.D.	N.D.	N.D.	N.D.	0.1
Bis-(2-ethylhexyl) Phthalate (DEHP)	%	0.010	N.D.	N.D.	N.D.	0.011	N.D.	N.D.	0.1
Diisobutyl phthalate(DIBP)	%	0.010	N.D.	N.D.	N.D.	N.D.	N.D.	N.D.	0.1
Conclusion	/	/	Pass	Pass	Pass	Pass	Pass	Pass	/

Item	Unit	RL	Result					Limit
			(265)+(267)+ (269)+(276)	(268)	(278)+(279)+ (281)+(282)	(284)	(285)+(287)+ (289)	
Dibutyl Phthalate(DBP)	%	0.010	N.D.	N.D.	N.D.	N.D.	N.D.	0.1
Benzyl Butyl Phthalate(BBP)	%	0.010	N.D.	N.D.	N.D.	N.D.	N.D.	0.1
Bis-(2-ethylhexyl) Phthalate (DEHP)	%	0.010	0.017	N.D.	N.D.	N.D.	N.D.	0.1
Diisobutyl phthalate(DIBP)	%	0.010	N.D.	N.D.	N.D.	N.D.	N.D.	0.1
Conclusion	/	/	Pass	Pass	Pass	Pass	Pass	/

Note:

- N.D. = Not Detected or less than RL
- RL = Report Limit
- 0.1% = 1000 mg/kg, mg/kg = ppm
- "+" = Mixed, Composite test has been performed in equal proportion for the components/material per client requested. And the result is calculated using the minimum sample weight. If the testing of specimen may have the obvious difference, and the result may exceed the number in this report. The applicant will undertake all differences and risk.
- The test result of samples (42),(229) are shown retest result, and the retest sample was provided by client on May 25, 2022.

TEST REPORT

Report No.: XMTN3220421-15546E

Date: June 02, 2022

Page 26 of 34

Photograph of Sample

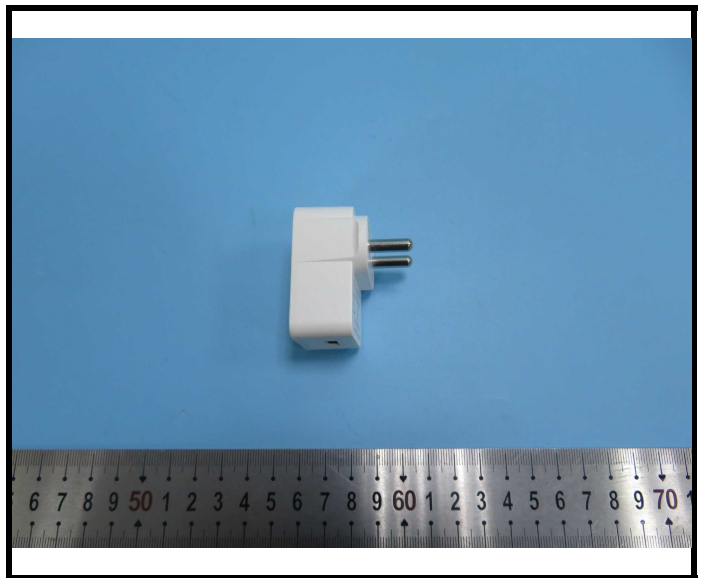
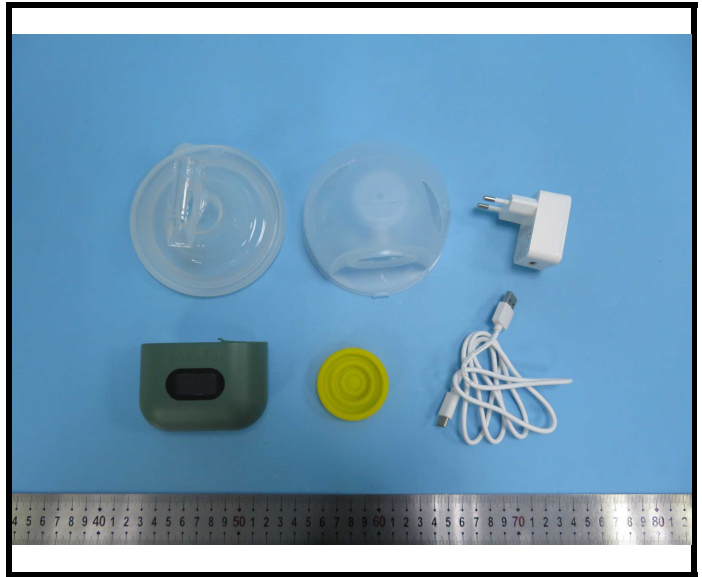
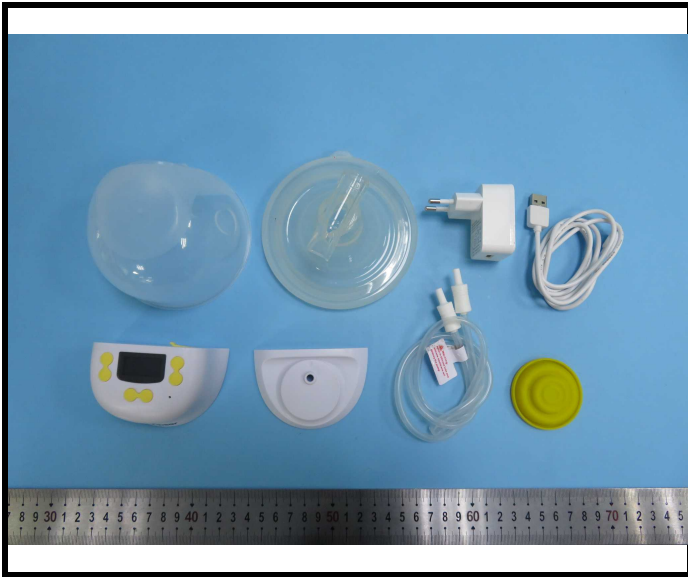


TEST REPORT

Report No.: XMTN3220421-15546E

Date: June 02, 2022

Page 27 of 34

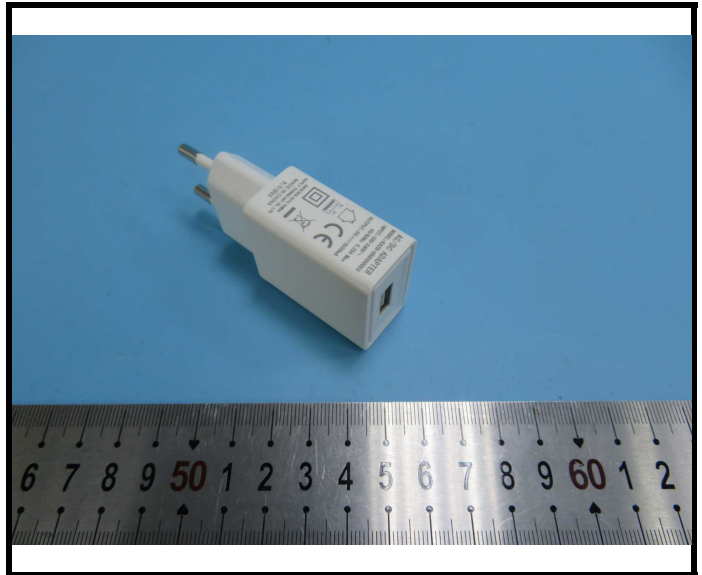
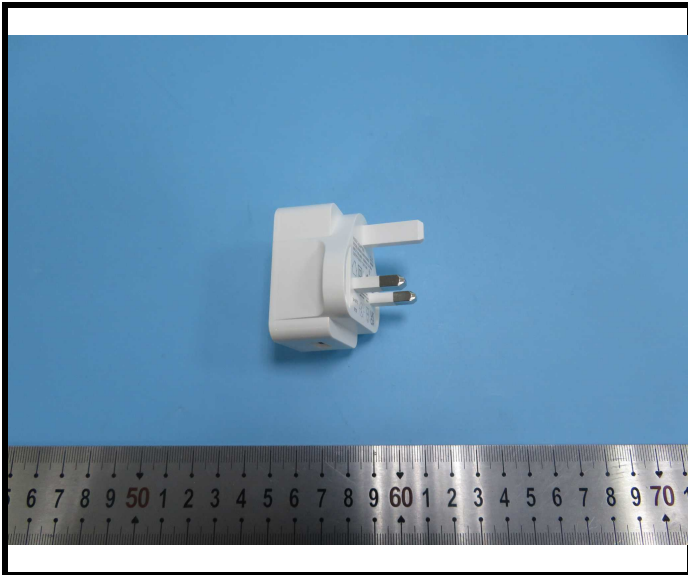
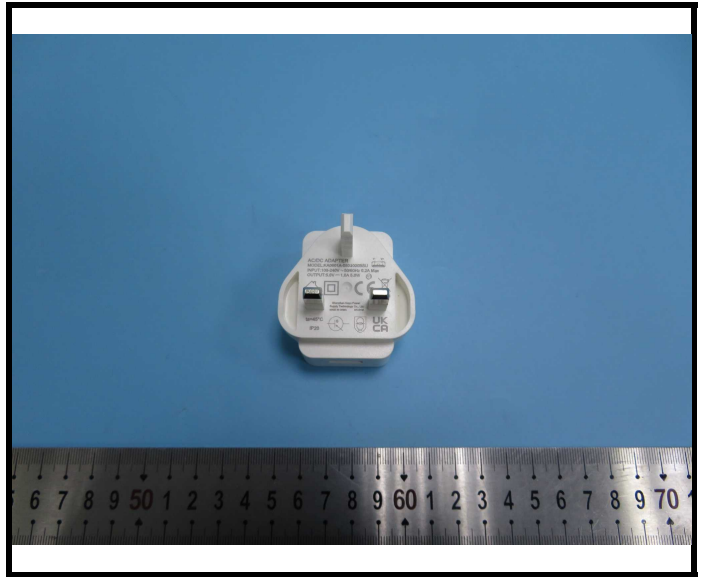
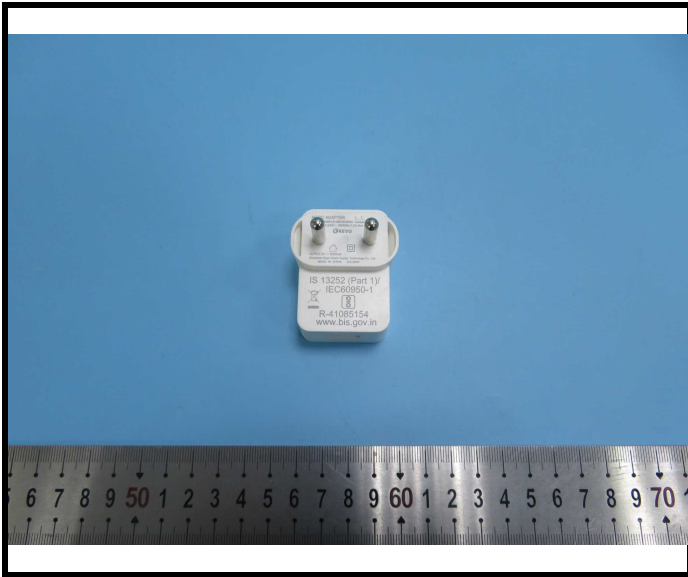


TEST REPORT

Report No.: XMTN3220421-15546E

Date: June 02, 2022

Page 28 of 34

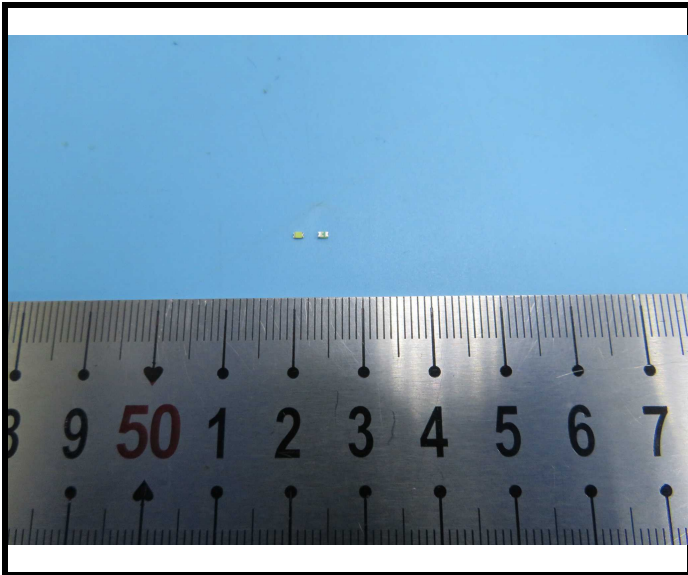
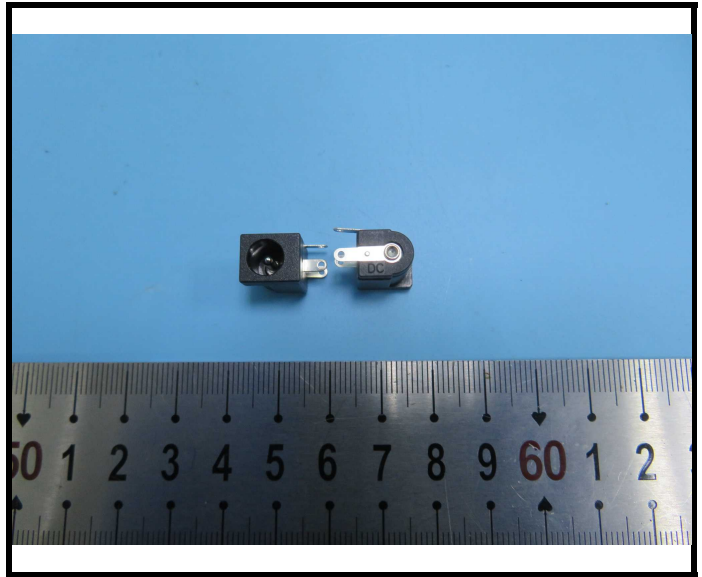
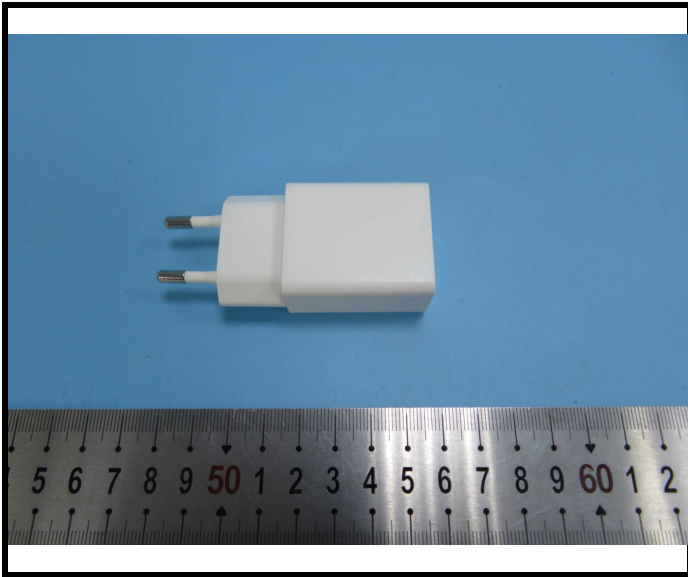


TEST REPORT

Report No.: XMTN3220421-15546E

Date: June 02, 2022

Page 29 of 34

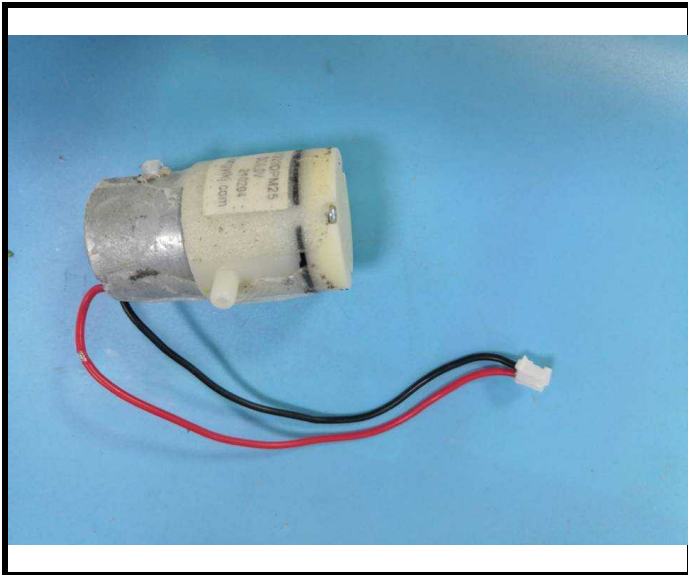
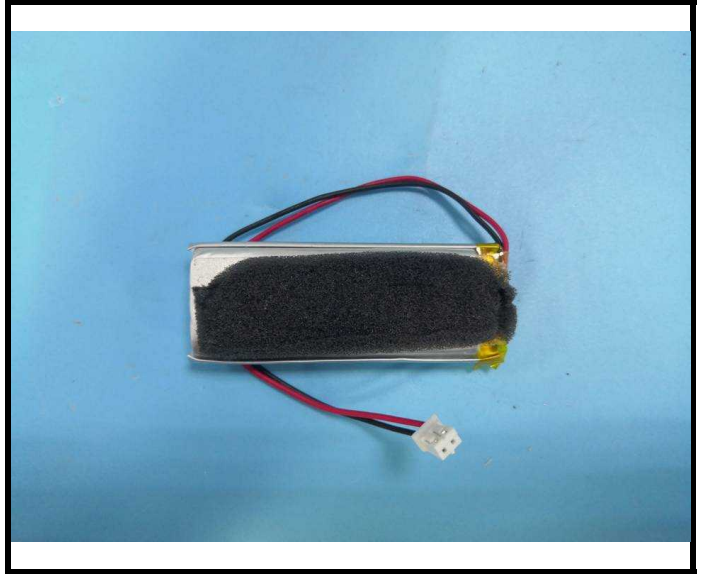
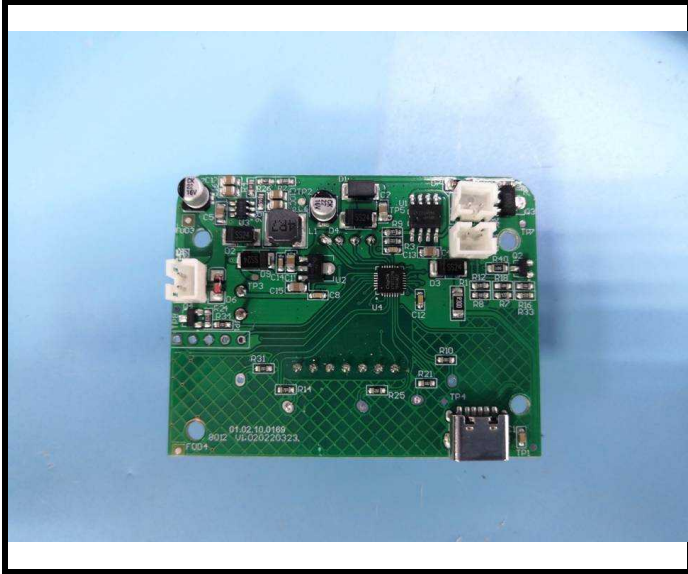


TEST REPORT

Report No.: XMTN3220421-15546E

Date: June 02, 2022

Page 30 of 34

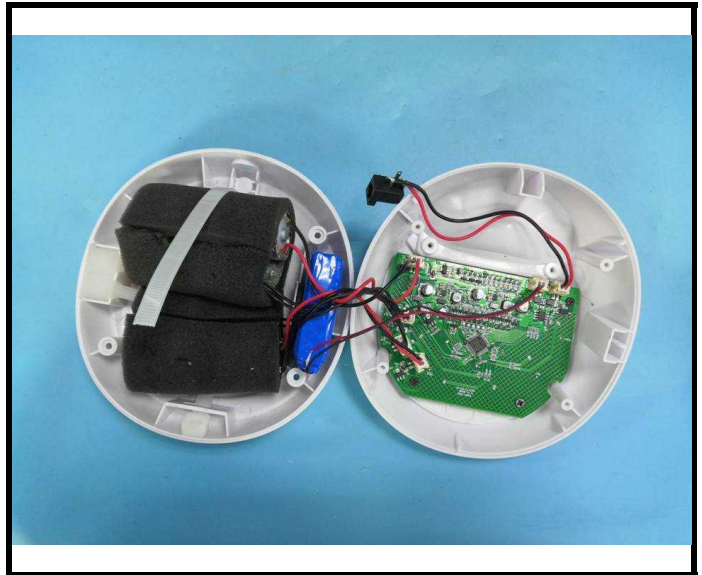
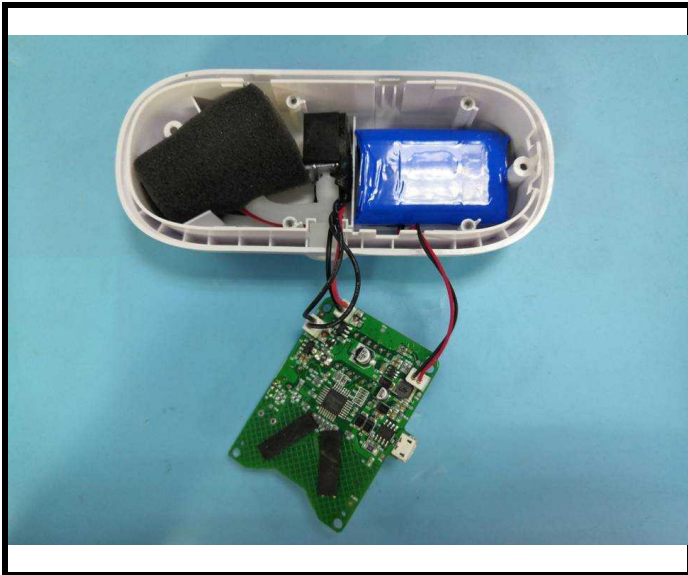
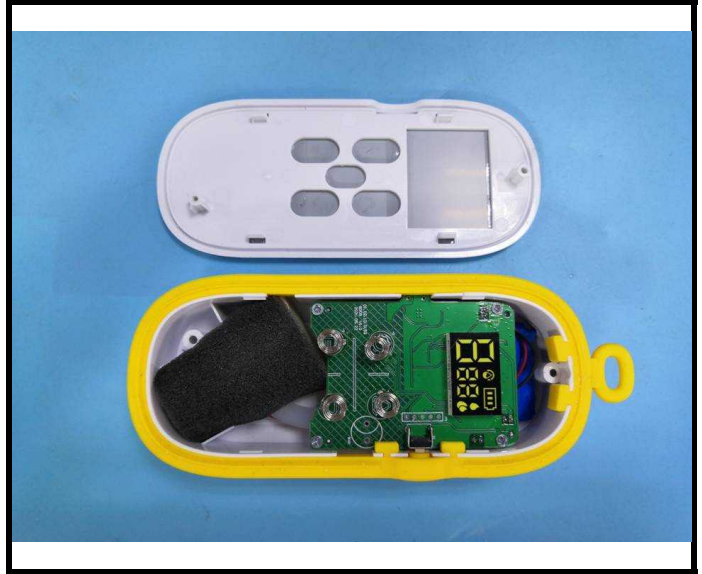
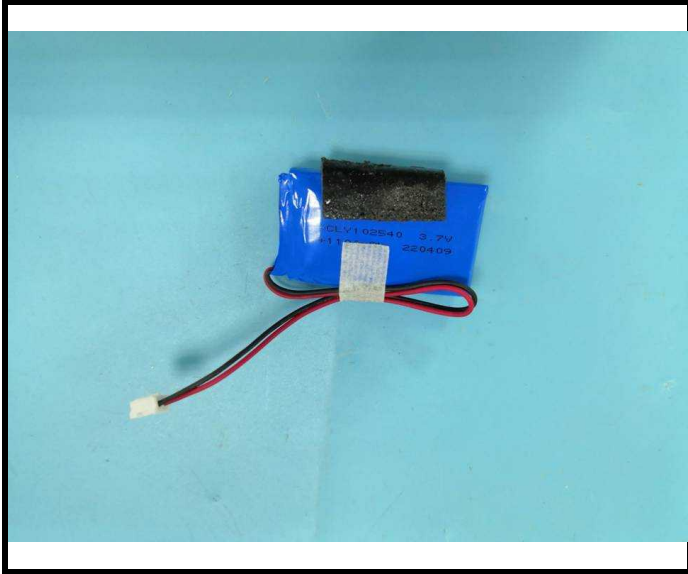


TEST REPORT

Report No.: XMTN3220421-15546E

Date: June 02, 2022

Page 31 of 34

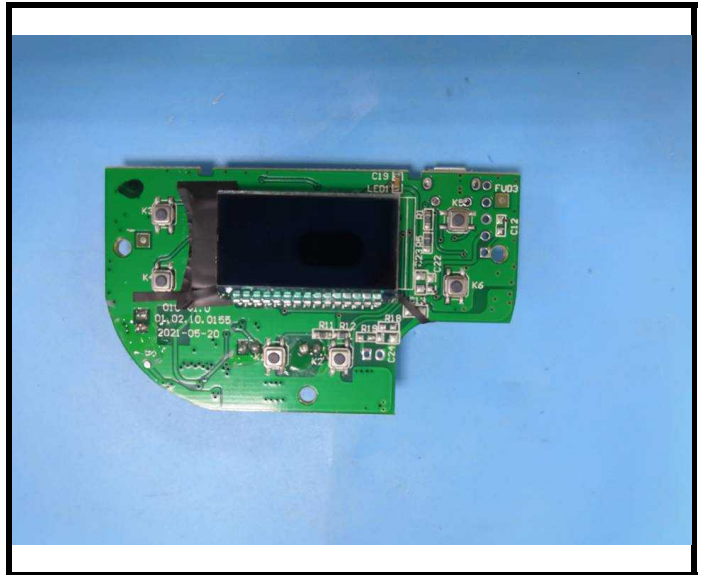
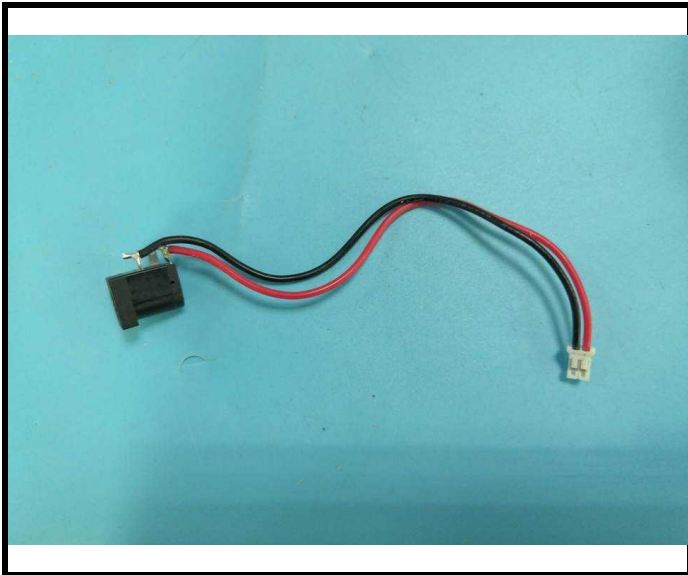
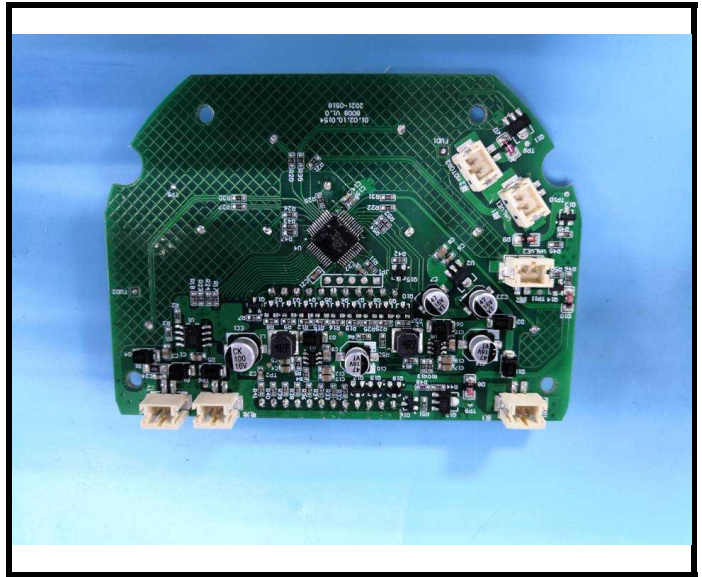
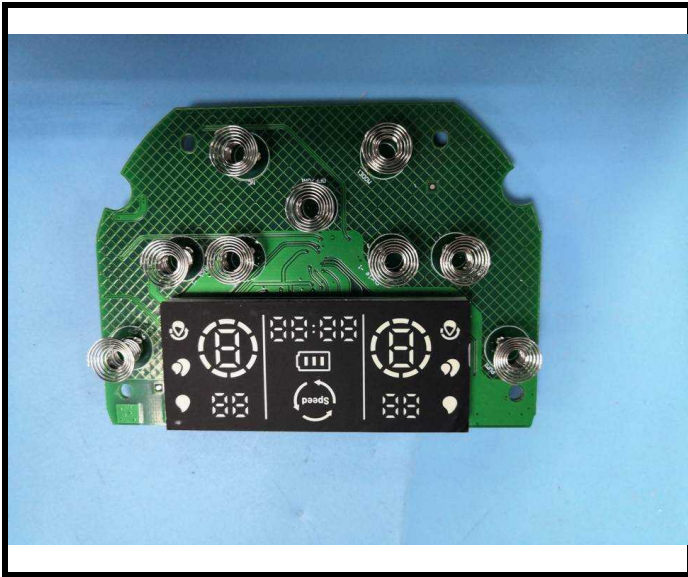


TEST REPORT

Report No.: XMTN3220421-15546E

Date: June 02, 2022

Page 32 of 34

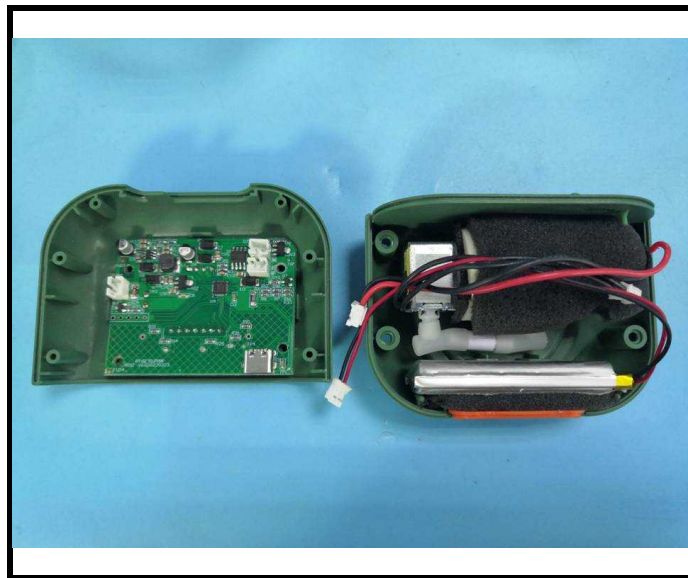
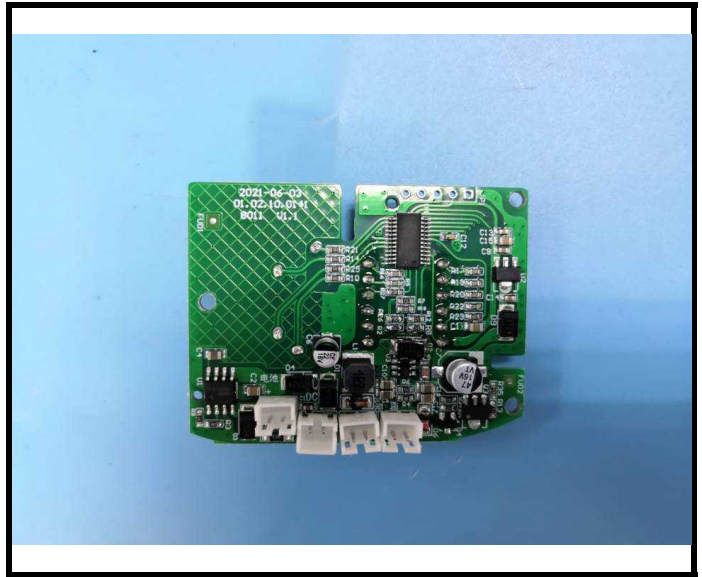
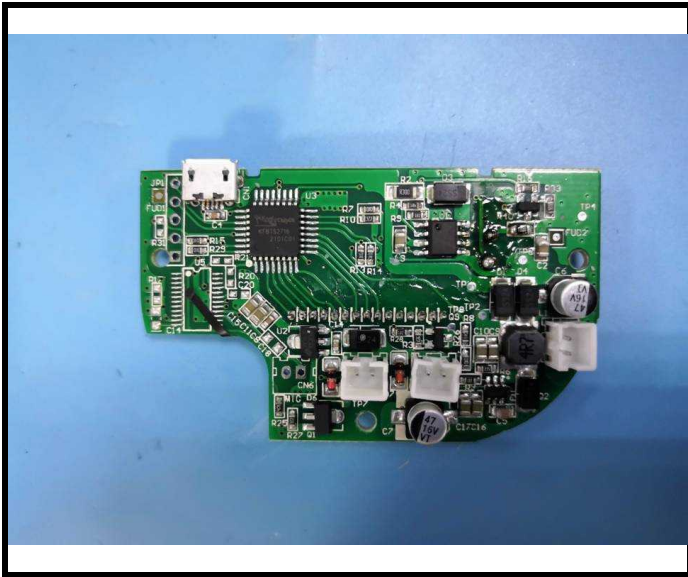


TEST REPORT

Report No.: XMTN3220421-15546E

Date: June 02, 2022

Page 33 of 34



BACL authenticate the photo on original report only

TEST REPORT

Report No.: XMTN3220421-15546E

Date: June 02, 2022

Page 34 of 34

Statement:

- 1.This report cannot be reproduced except in full, without prior written approval of the Company.
- 2.Unless otherwise stated the results shown in this test report refer only to the sample(s) tested and such sample(s) are retained for 30 days only.
- 3.This report is valid only with a valid digital signature. The digital signature may be available only under the Adobe software above version 7.0.
- 4.Otherwise required by the applicant or Product Regulations, Decision Rule in this report did not consider the uncertainty.
- 5.The information which provided by the applicant, such as sample description, sample name, material component, style/item No. , P.O. No. , manufacturer, age phase, the laboratory is not responsible for its authenticity and this information can affect the validity of the result in the test report.
- 6.The test samples were in good condition before testing.
- 7.The extended uncertainty given in this report is obtained by combining the standard uncertainty times the coverage factor K with the 95% confidence interval.

*** End of Report ***