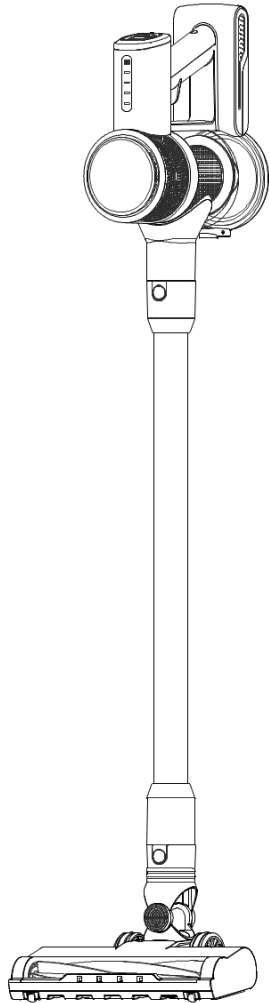


Handheld cordless vacuum cleaner

Instruction Manual



MODEL: C708

PAGES

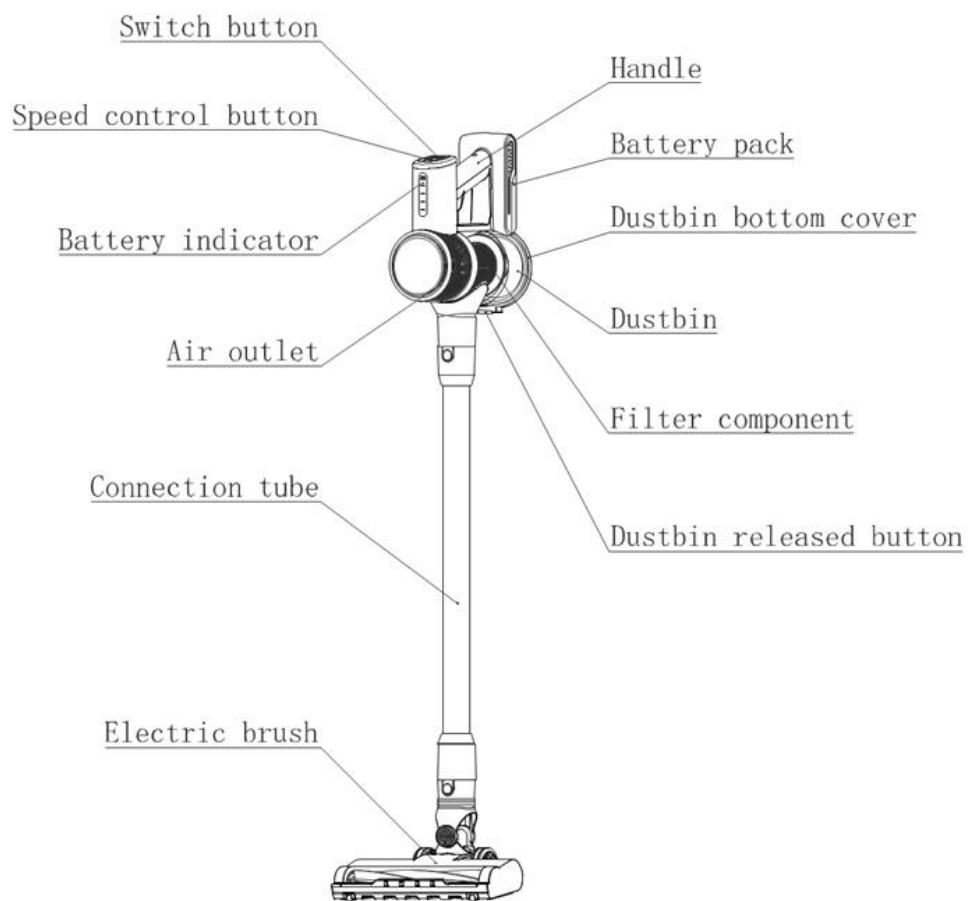
1. Attention	2
2. Illustration (part name)	4
3. Technical parameters	5
4. Attached accessories	5
5. User Manual	6
5.1 Assembly	6
5.2 Battery charge	7
5.3 Used as stick vacuum cleaner	8
5.4 Used as handheld vacuum cleaner	9
6. Clean and maintenance	10
6.1 Empty the dust	10
6.2 Clean the dustbin system	11
6.3 Clean up the electric brush	12
7. Problem solving	13

1.ATTENTION

To help you use this product in correct way and protect you from unnecessary body injury and property loss, please read this instruction manual carefully before you use it.

1. This product is for home use only; it's not for commercial use!
2. Please check carefully whether every part is in good condition upon opening the box, please do not use the product and contact dealer or service immediately if anything is found missing or broken
3. Please check carefully whether every part is in good condition upon opening the box, please do not use the product and contact dealer or service immediately if anything is found missing or broken
4. Please make sure the local power (V) fall within power range that indicated on charger
5. Charger shall be placed on dry surface, do not leave it unattended during charging
6. Please hold the plug instead of cord to pull charger out from socket, cord shall stay away from heat sources, do not touch charger with wet hand
7. This product is not a toy, please store this product far away from reach of children. Special attention shall be made when children is playing around
8. Please never use this product to vacuum any liquid, heat temperature substance, very fine substance (E.g. sawdust, plaster powder, cement, ash, carbon powder), sharp substance (E.g. glass, staple), and hazardous substance (E.g. detergent, solvent), chemical substance (E.g. Acid), flammable substance (petrol, alcohol), Etc.
9. Please cut off the power before you clean the product, please always use dry or slight wet soft cloth, do not use alcohol, benzene, Etc.
10. This product can't stand itself, please apply the product body onto holder
11. Do not have the product immersed in the water, do not leave or use the product out of house!
12. Please make sure all parts are assembled correctly. Do not use this product without filtration
13. Do not try disassembling the battery, Do not place battery on metal surface or near heat sources, Do not put the battery in fire
14. Do not try disassembling or repairing this products/charger yourself, please call professionals for any repair or replacement with original parts/unit
15. Please make sure that products can no longer be used before you discard it, the battery pack must be removed from product for further safe recycle disposal
16. This product can not be used by persons (including children) with reduced physical, sensory or mental capabilities or lack of experience and knowledge unless they have been given supervision or instruction concerning use of the appliance in a safe way and understand the hazards involved.
17. This product is not for any professional and commercial use, any damage/consequence caused by improper use or use without following this instruction are not covered by warranty

2. ILLUSTRATION (PART NAME)



3. TECHNICAL PARAMETERS

Cleaner parameter

Model name: Handheld cordless VAC
500mA

Model no.: C708

Rated voltage: 22.2V ---

Rated power : 250W

Product's size: 249*220*1125mm

N.W.: 2.2KG

Color box size: 445*182*275mm

Charger parameter

Charger output 26V ---

Charger input :100-240V~50/60Hz

Charger voltage: 100-240V

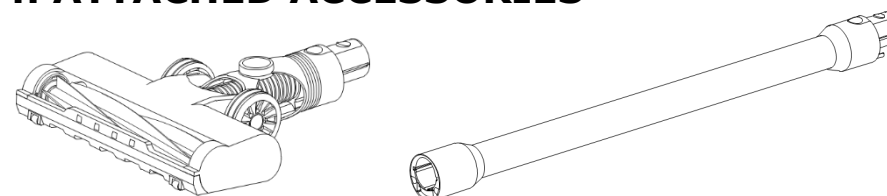
Battery Parameter

Battery: Li-ion 2200mAh

Working time: 20-40 min

Charging time: 4-5H

4. ATTACHED ACCESSORIES

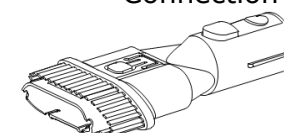


Electric brush

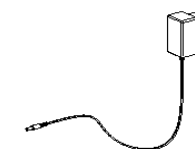
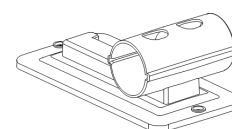
Connection tube



Flat nozzle



multi-function nozzle



Wall hanging

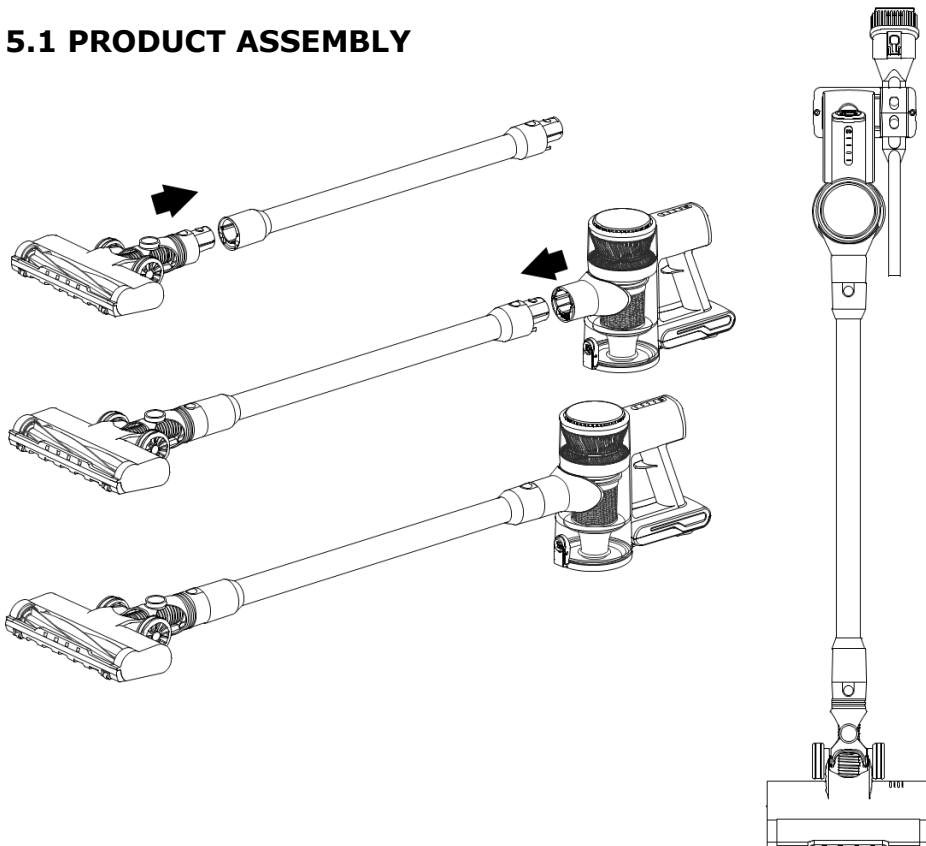
changer

5. ASSEMBLY INSTRUCTION

Please carefully read "ATTENTION" before assembly:

This product can't stand itself, please apply body part onto wall hanging which is on the connection tube

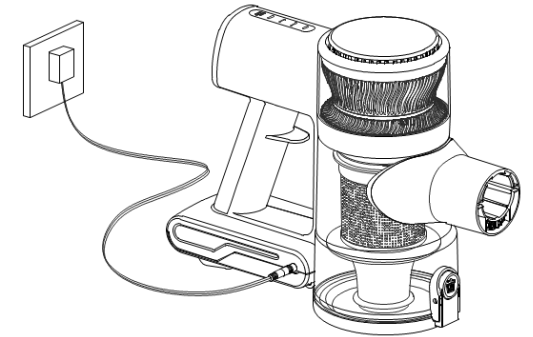
5.1 PRODUCT ASSEMBLY



1. Connect the electric brush and the connection tube until the button is locked
2. Insert the body into the connection tube until the button is locked;
3. Hang the assembled vacuum cleaner and multi-function nozzle on the wall hanging.

5.2 Vacuum Cleaner Charging

1. Make sure that the product is powered off, plug the adapter charging head into the charging port behind the console and plug the adapter into a 100-240V to 50/60Hz power outlet.



2. When charging the battery, the 3 charging indicators will be light in turn.

3. When the power is charged to more than 1/5, the first indicator light is on, and so on until full.

4. All the charging indicator are on after all the lights are on.

WARNING: Do not turn on the product and Do not try removing battery during it's charging!


ATEENTION:

①Only within 0°C--45°C can charging be allowed, over heating or over cold could prolong the charging time or even damage the battery

②Normal charging takes 4-5 hours

③If this product will not be used for a long time, please charge and discharge this product once every 3 months

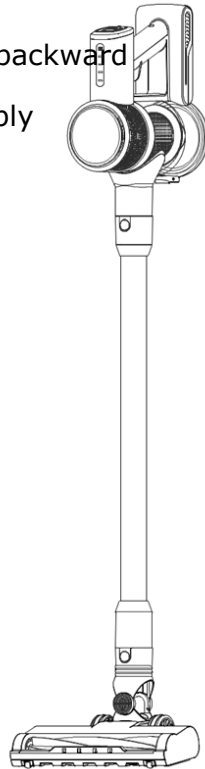
5.3 Product Function Tips

1. When the last indicator  turns red, it indicates that the battery is about to run out, please charge in time;

2. The electric brush light blinks for three times and stops running, it indicates that the ground brush resistance is too high. Please check whether the rolling brush is stuck **Attention: The electric brush is not recommended for cleaning on the long hair carpet for long time**

5.3 USED AS STICK VACUUM CLEANER

1. Step on the electric brush and tilt the appliance backward
2. Press the power button to turn on the power supply
3. Press the adjustment button to adjust the flow
4. Move back and forth and start cleaning.

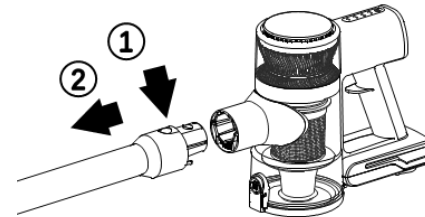


ATTENTION:

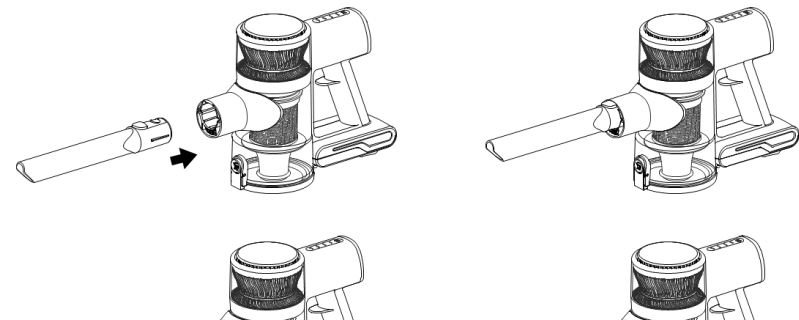
1. The power indicator on the battery blinks when the battery is out of power, and the product will shut itself off. Please charge it in time.

2. Please do not stay in the same place for too long to avoid damage to the floor.

5.4 USED AS HANDHELD VACUUM CLEANER



- ① Press the button on the connection tube;
- ② Separate the body and connection tubes (place the ground brush and connection tube properly);
- ③ Using a suitable nozzle: Insert the hand-held vacuum cleaner snort as shown.
- ④ Press the power switch to start the machine.

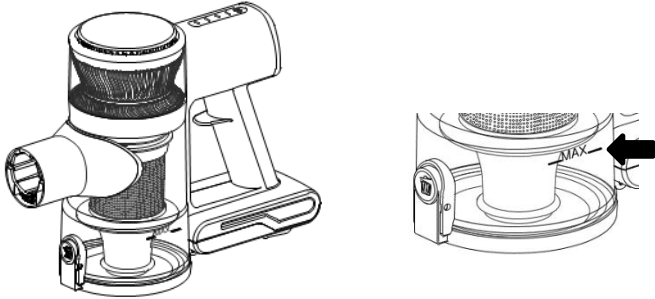


6. CLEANING AND MAINTENANCE

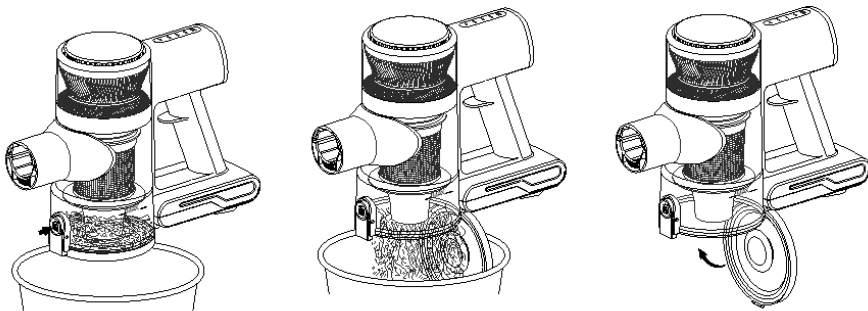
6.1 EMPTY THE DUST

Attention:

Please empty the dust when it reaches "MAX" level on dustbin



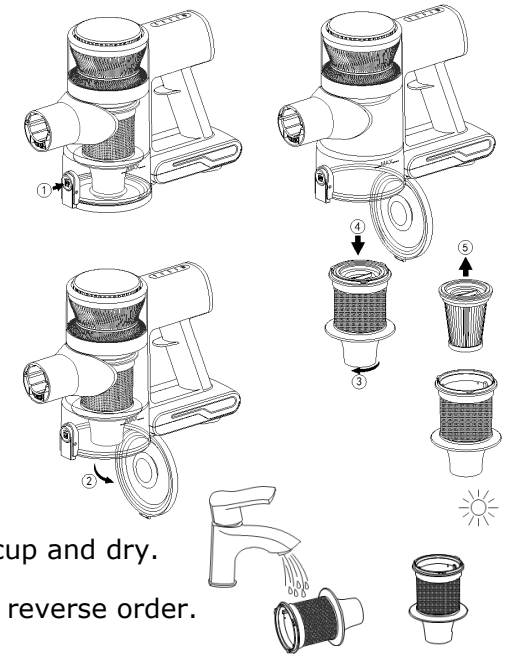
- ① Turn off the power and remove the body;
- ② Aim the bottom of the vacuum cleaner dust cup at the dustbin, and press the button at the bottom of the dust cup;
- ③ Gently shake to empty the dust in the dustbin,
- ④ Close the bottom cover and lock.



6.2 CLEAN THE DUSTBIN SYSTEM

To maximize the cleaning performance, it's suggested to clean the filtration system after every 4-6 times of using

1. Turn off the power, press the bottom switch
2. Open the dust cup bottom and empty the dust.
3. Hold the bottom of filter assembly and rotate it in the direction as shown in the picture.
4. Remove metal filter and HEPA assembly downward
5. Remove the HEPA assembly from the upper part of the filter;
6. Clean the HEPA filter and dust cup and dry.
7. Reassemble all parts correctly in reverse order.



The wrong assembly will reduce suction and even damage the motor!

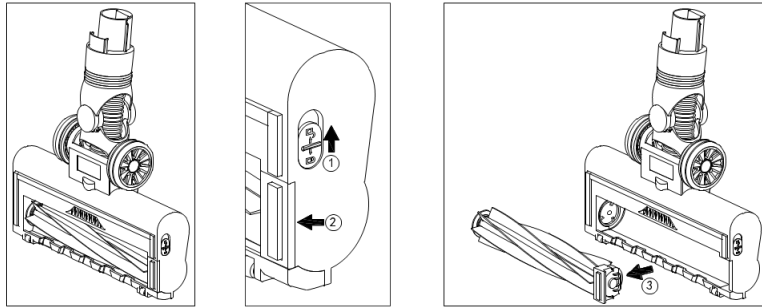
Attention:


- ① before assembly back, make sure that all parts after cleaning are completely dry, otherwise do not use.
- ② The dustbin is not available for water flushing to prevent liquid from entering the interior of the host, and can be wiped with a slightly damp soft cloth. Do not use until it gets completely dry.
- ③ HEPA is a kind of vacuum cleaner consumable material, can not be washed directly, otherwise it will greatly reduce the filtration performance.
- ④ HEPA is not clean for long time, it may cause air duct blockage! Please clean or replace the HEPA regularly.

Warning: Do not use without filter system installed

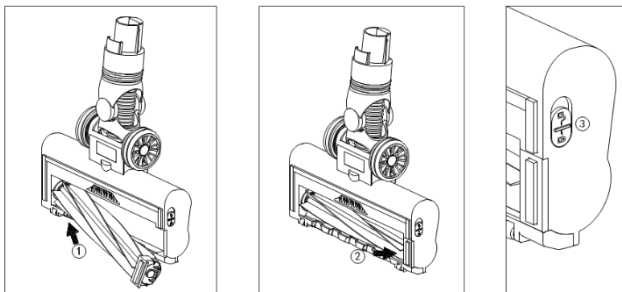
6.3 Clean up the electric brush

Clean up the electric brush



1. Turn off the power and release the electric brush;
2. Turn the button on the bottom of nozzle by coin to “” position.;
3. the roller brush bracket pops out;
4. Lift up one side of the roller and take it out.
5. Along the groove on the roller, cut off twirled hair or blockage by scissors or knife.

Install the brush



1. Align one end of the clean (or new) roller brush with the rotating shaft of the ground brush and put it into the ground brush;
2. Put one end of the roller brush into the correct position of the ground brush



3. Install the roller brush in place, then the button turns to “when the buckle sound is sound.”

7.PROBLEM SOLVING

There are some simple problems in the process of use that can be resolved by reference to the following methods

Problem	Possible causes	Solving
Product cannot start	<ul style="list-style-type: none"> ●Running out of power 	<ul style="list-style-type: none"> ●Charge the battery (Refer to 5.2)
No suction or weak suction	<ul style="list-style-type: none"> ●Dustbin is full of dust ●Filtering is not correctly assembled or dust blocked the HEPA ●Nozzle and/or tubes blocked 	<ul style="list-style-type: none"> ●Empty the dust (Refer to 6.1) ●Clean/replace filtering(Refer to 6.4) ●Unblock the nozzle and/or tube
Electric brush indicator lights flashing or stop running	<ul style="list-style-type: none"> ●Roller blocked, protection function works ●Work on the long hair carpet for long time. 	<ul style="list-style-type: none"> ●clean the electric brush (Refer to 6.3) ●Reset the power and work on the proper carpet
Using time shorter	<ul style="list-style-type: none"> ●Battery not fully charged ●Battery aging 	<ul style="list-style-type: none"> ●Charge the battery (Refer to 5.2) ●Purchase original battery Pack from manufacturer

WARNING: FOR SOLVING OTHER PROBLEMS OR REPLACEMENT, PLEASE ALWAYS RESORT TO PROFESSIONALS SPECIFIED, ANY UNAUTHORISED REPAIRING ARE NOT COVERED BY WARRANTY

