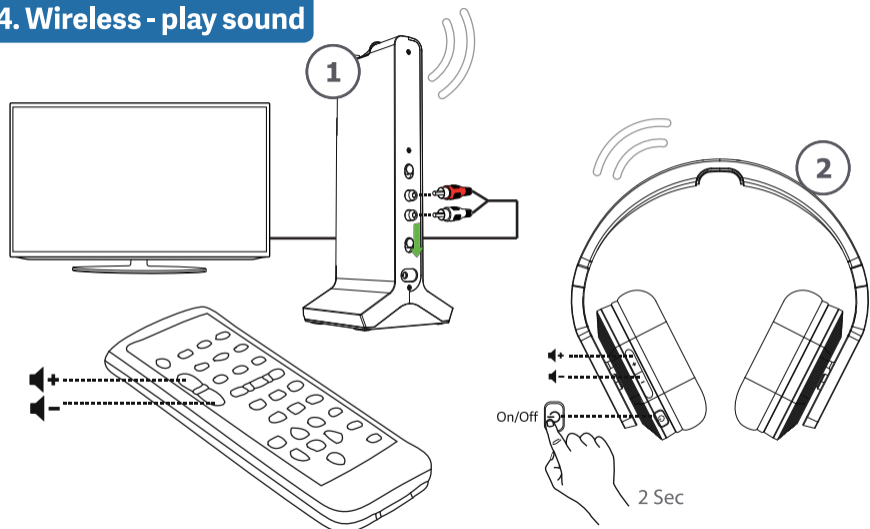
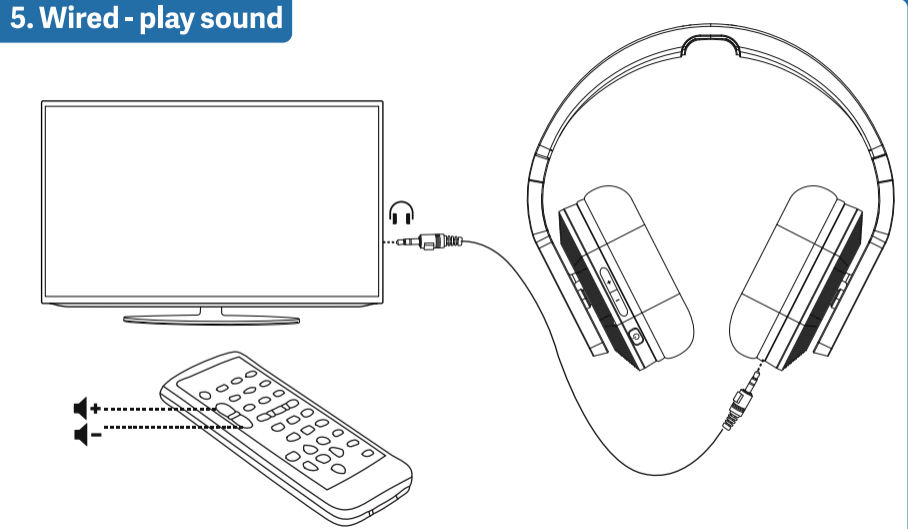


4. Wireless - play sound



5. Wired - play sound



FAQ

Frequently asked questions
www.trust.com/20071/faq

	Smart power management 5 min automatic standby		ECO mode
	30m		Wireless range
	volume boost on		Volume boost
	volume boost off		

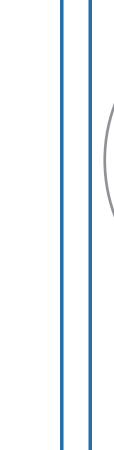
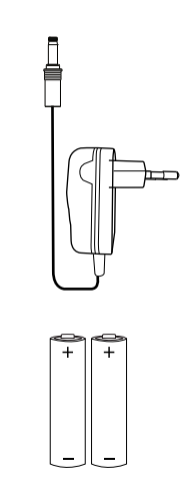
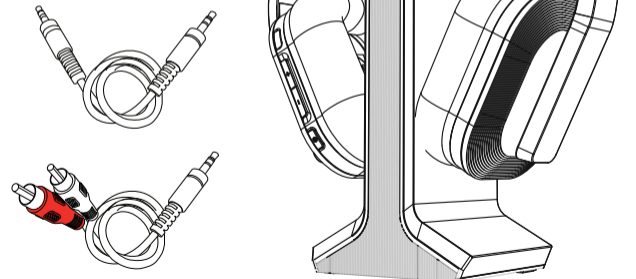
© 11-7-2014 Trust International B.V. All rights reserved.

Trust | SMART TV

TV WIRELESS HEADPHONE
 REZON | digital wireless technology | works with any TV



REZON



1. Charging

1. The battery cover is shown being rotated to the open position. 2. Two AAA batteries are shown being inserted into the compartment. 3. The device is shown on its stand with the battery cover closed.

Only use rechargeable AAA Ni-MH 1.2V battery

2. Setup 1/2

1. A 3.5mm audio cable is connected to the TV. 2. The device's power jack is connected to a power source. 3. The device's power switch is shown in the 'ON' position.

3. Setup 2/2

4. A hand is shown holding the device, with a '2 Sec' label indicating a 2-second hold.