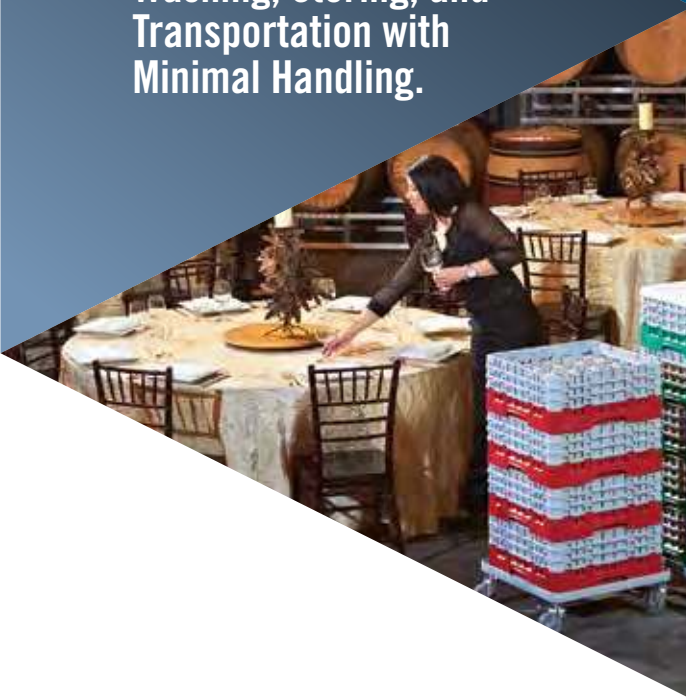




WAREWASHING SYSTEM GUIDE

A Complete
Line of Products for
Washing, Storing, and
Transportation with
Minimal Handling.



Camrack® Warewashing System



WASH



STORE



INVENTORY CONTROL



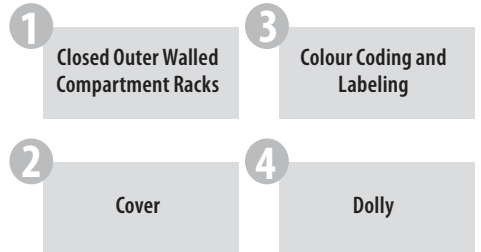
**SAFE, SANITARY
TRANSPORTATION**

Camrack 4-in-1 Warewashing System

- Efficient Washing
- Optimum Sanitary Storage
- Inventory Control
- Safe, Sanitary Transportation

Camrack Warewashing System

Cambro® offers a 4-in-1 system where glassware is washed, stored, identified and transported in one multi-purpose unit. This complete system includes the Camrack compartment racks, a Camdolly® and the Camrack cover.



Cambro Camracks offer complete protection and lowers replacement costs for all of your delicate and valuable stemware and tumblers.

Safe and Easy-to-Handle System

Efficient Washing System

Cost-Effective System

Hygienic Storage and Transportation System



Efficient Washing System

Innovative Design

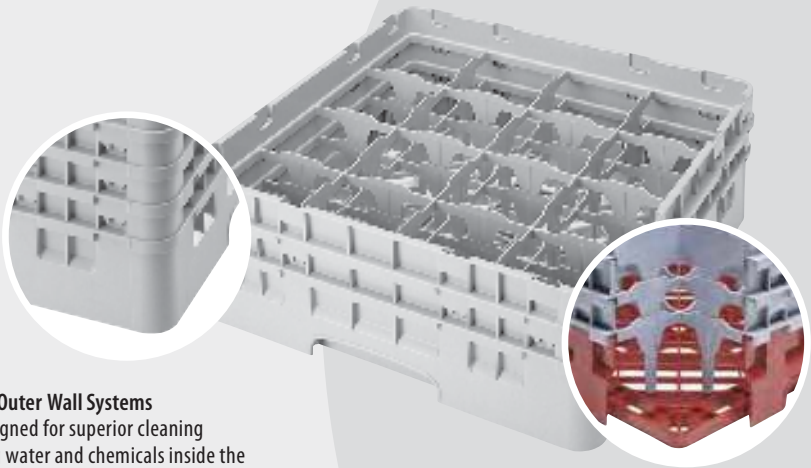
Cambro's open inside compartments provide thorough circulation of water and cleaning solutions to promote excellent cleaning and quick and thorough drying. Cambro's closed outer wall system is designed for optimum cleaning, keeping water and chemicals inside the rack, reducing waste.

Racks with open outer wall design actually increase overall operational cost because of the need to rewash glassware. This increases the consumption of water, chemicals, utilities and labor or plastic wrap.



FACT:

Water in commercial dishwashers enters from above and below, not from the sides. Cambro's Camracks have open inside compartments that allow water and chemicals to pass between areas easily and wash all contents efficiently.



Closed Outer Wall Systems are designed for superior cleaning keeping water and chemicals inside the rack, reducing waste.

Open Inside Compartments

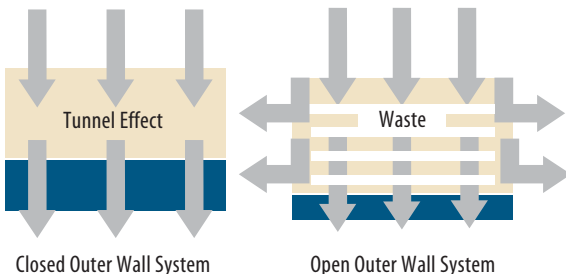
Provide thorough circulation of water and cleaning solutions and promote quick and thorough drying.

Benefits of Tunnel Effect in Closed Outer Wall System

- Optimum washing and rinsing due to longer contact of solution inside the rack.
- Reduced waste of water and chemicals unlike open outer wall racks.
- Eliminated costly rewashing.
- Increased savings in water, chemicals and electricity consumption.
- Time and labor savings since there will be no rewashing needed before setup.
- Reduced breakage from reduced handling.



Customers are served with clean dishes and sparkling glassware every time.



Hygienic Storage and Transportation System

Ideal Cleaning and Sanitary Storage

The Camrack® System will protect glassware and keep it clean until the next event, with no rewashing.



Camrack Cover
Seals from the Top



No Dirty Hands



No Bacteria



No Bugs



No Rodents



**No Dirty
Mop Water**



Camrack Dolly
Seals from the Bottom

Unsanitary Storage

Open exterior walls allow contaminants such as dirty water, bacteria, insects, dirt, dust and employee fingers to pass through the sidewall, contaminating clean glassware, requiring costly rewashing and additional handling (which could lead to glass breakage).



Easy to Handle and Safe to Stack System

Ergonomic Design

Cambro Camracks have built-in handles on each side allowing easy and safe handling. Unlike open-walled competitive racks, there are no crevices for fingers to get stuck in thereby reducing employee injury, glass breakage and risk of contamination. Edges of racks and handles are smooth, flat surfaces that allow Camracks to easily slide over each other and interstack for storage.



Unsafe handling



Difficult stacking

Easy Handling

- Easy-to-grip handles are designed for comfort, safe handling and lifting.
- Smooth sides and rounded corners ensure easy carrying and reduce the risk of injury.

Smooth Stacking

- Smooth top edge for smooth and safe stacking.
- Interstacks with existing racks from major dishrack manufacturers.
- No need to align with corner pegs, just slide the racks over each other.

Inventory Control

Base Rack Colours:

	9 compartments Black (110)
	16 compartments Red (163)
	25 compartments Navy Blue (186)
	36 compartments Soft Gray (151)
	49 compartments Sherwood Green (119)



Difficult product identification

- Colour coding provides an easy system to quickly identify contents.
- Bright colours identify, at a glance, both contents and quantity per rack.

Cost-Efficient System

Closed Outer Wall System Increases Cost Savings

Step 1.—Washing



Step 2.—Stacking, Transporting or Storing



Step 3.—Setting up



With Cambro Camracks, the glassware is washed in the dishwasher, stacked on a Camdolly and covered on top for storage.

When glassware is needed, employees can easily retrieve and transport to the appropriate location. No plastic wrap is needed for storage or rewashing needed before use.

Cost Savings in:

- Water
- Labor
- Chemicals
- Reduced Breakage
- Electricity
- Set-up Time
- Plastic Wrap

Increases:

- Employee Efficiency
- Employee Safety
- Profits

An Open Outer Wall Design Increases Cost

Step 1.
Washing



Step 2.
Stacking



Step 3.
Covering



Step 4.
Rewashing



Step 5.
Setting up



With open outer wall racks, employees wash glassware immediately after use and then wrap the racks with plastic wrap for storage. If plastic wrap is not used, employees rewash glassware a second time before use.

Increase Costs in:

- Water
- Chemicals
- Electricity
- Plastic Wrap
- Labor
- Replacement cost from breakage

Decreases:

- Employee Efficiency
- Employee Safety
- Profits

Plastic Wrap

- Compromises hygiene
- Increases cost
- Increases labor
- Is not environmentally friendly!

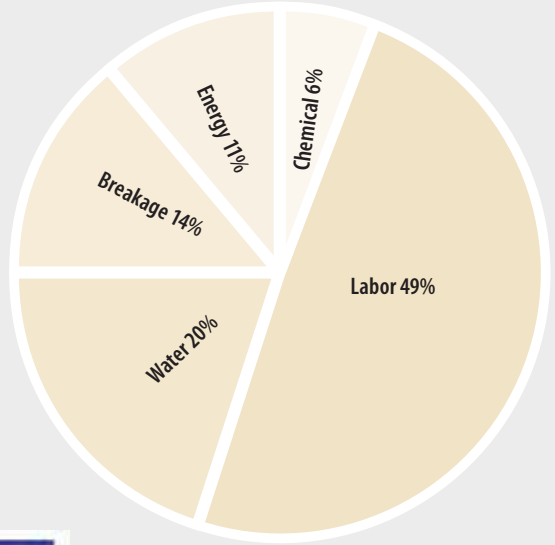
Plastic wrap does not protect glassware from contaminants and must be thrown out after each use.



Overall Cost Savings

Cost of Clean

On average, 25 cents is spent to wash one Camrack® full of glassware. With an open wall system, this amount is doubled due to rewashing the glassware after storage. Chart shows the breakdown of costs during the process of washing, storing and transporting glassware and dishes.



ROI Camrack Calculator

EcoSafe **CAMBRO**

Project Name:

Salesperson Name:

Total Project Investment:

Water Savings: Liters/week. **YOU WILL SAVE:** € 0.00 Per Week

Energy Savings: kWh/week. **YOU WILL SAVE:** € 0.00 Per Week

Chemical Savings: Liters/week. **YOU WILL SAVE:** € 0.00 Per Week

Water Savings: Liters/week. **YOU WILL SAVE:** € 0.00 Per Week

Energy Savings: kWh/week. **YOU WILL SAVE:** € 0.00 Per Week

Chemical Savings: Liters/week. **YOU WILL SAVE:** € 0.00 Per Week

TOTAL RETURN ON INVESTMENT PER WEEK IN AN AVERAGE WEEK: € 0.00 Per Week

TOTAL NUMBER OF WEEKS REQUIRED TO PAY THE TOTAL INVESTMENT: 400000 Weeks

Water Savings: Liters/week. **Chemical Savings:** Liters/week

Energy Savings: kWh/week

Return on Investment Calculator

Investing in the Cambro Warewashing System is a major decision, one that will continually save you money. The ROI Calculator was designed to compare the increased savings when using the Camrack closed wall system compared to using the racks with opened walls. By filling out the ROI Calculator, you will be able to measure the savings in the areas listed below and also determine how much time it will take to payback your Cambro Warewashing System investment.

- Number of weeks needed to pay the total investment
- Water savings in liters per week
- Chemical savings in liters per week
- Energy savings in kWh per week
- Labor savings

The Camrack System offers a measurable ROI and will save you money for years and years of service.

ENERGY SAVINGS

Water Savings: Liters/week

Chemical Savings: Liters/week

Energy Savings: kWh/week

Minimize Environmental Impact

Open wall dishracks have a greater negative impact on the environment than the enclosed, hygienic storage system offered by Cambro Camracks. Water, chemicals and electricity are consumed at a higher rate by facilities that must rewash after storage. Plastic wrap that is used to protect glassware gets thrown out after each use. Cambro Camracks minimize environmental impact by reducing

chemical, water and electricity usage in washing and eliminates the need for plastic wrap in order to create a sealed environment for glassware. Cambro helps protect your glassware investment while protecting the environment and your bottom line.

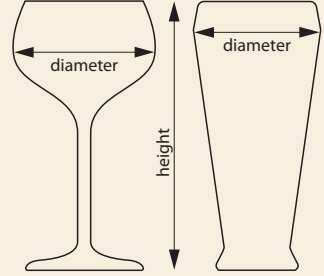


Full Size Camracks® for Stemware & Tumblers

Whatever size and style glassware you have, we have the right glass rack to wash, transport and store them. From washing and handling to stacking, storing and transporting, these racks offer complete protection for all your delicate and valuable stemware and tumblers.

Choose the correct dishrack:

1. Measure the maximum diameter of your glass (stemware or tumbler) to determine the number of compartments.
2. Measure the maximum height of your glass (stemware or tumbler) to the top edge of the rim to determine the compartment height.



49 COMPARTMENTS

Ø MAX. DIAMETER (CM)	6,2	6,2	6,2	6,2	6,2	6,2
MAX. HEIGHT (CM)	9,2	13,3	17,4	21,5	25,7	29,8
CODE	49S318	49S434	49S638	49S800	49S958	49S1114
RACK HEIGHT (CM)	14,3	18,4	22,5	26,7	30,8	34,9

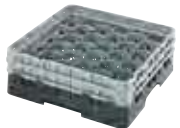


36 COMPARTMENTS

Ø MAX. DIAMETER (CM)	7,3	7,3	7,3	7,3	7,3	7,3
MAX. HEIGHT (CM)	9,2	11,4	13,3	15,5	17,4	19,6
CODE	36S318	36S418	36S434	36S534	36S638	36S738
RACK HEIGHT (CM)	14,3	14,3	18,4	18,4	22,5	22,5

36 COMPARTMENTS

Ø MAX. DIAMETER (CM)	7,3	7,3	7,3	7,3	7,3	7,3
MAX. HEIGHT (CM)	21,5	23,8	25,7	27,9	29,8	32
CODE	36S800	36S900	36S958	36S1058	36S1114	36S1214
RACK HEIGHT (CM)	26,7	26,7	30,8	30,8	34,9	34,9



30 COMPARTMENTS

Ø MAX. DIAMETER (CM)	7,94	7,94	7,94	7,94	7,94	7,94
MAX. HEIGHT (CM)	9,2	13,3	17,4	21,5	25,7	29,8
CODE	30S318	30S434	30S638	30S800	30S958	30S1114
RACK HEIGHT (CM)	14,3	18,4	22,5	26,7	30,8	34,9

30 compartment Camracks offer a more secure fit for your glassware and fill the gap between standard 25 and 36 compartment racks, resulting in less movement and breakage. The new design offers a 20% increase in space utilization against standard 25 compartment racks.

Base Rack Colours



In Stock Colours Base Rack: (110), (119), (151), (163), (167), (168), (184), (186), (414), (416).
Extender: (151).



25 COMPARTMENTS

Ø MAX. DIAMETER (CM)	8,7	8,7	8,7	8,7	8,7	8,7
MAX. HEIGHT (CM)	9,2	11,4	13,3	15,5	17,4	19,6
CODE	25S318	25S418	25S434	25S534	25S638	25S738
RACK HEIGHT (CM)	14,3	14,3	18,4	18,4	22,5	22,5

25 COMPARTMENTS

Ø MAX. DIAMETER (CM)	8,7	8,7	8,7	8,7	8,7	8,7
MAX. HEIGHT (CM)	21,5	23,8	25,7	27,9	29,8	32
CODE	25S800	25S900	25S958	25S1058	25S1114	25S1214
RACK HEIGHT (CM)	26,7	26,7	30,8	30,8	34,9	34,9



20 COMPARTMENTS

Ø MAX. DIAMETER (CM)	9,84	9,84	9,84	9,84	9,84	9,84
MAX. HEIGHT (CM)	9,2	11,4	13,3	15,5	17,4	19,6
CODE	20S318	20S418	20S434	20S534	20S638	20S738
RACK HEIGHT (CM)	14,3	14,3	18,4	18,4	22,5	22,5

20 COMPARTMENTS

Ø MAX. DIAMETER (CM)	9,84	9,84	9,84	9,84	9,84	9,84
MAX. HEIGHT (CM)	21,5	23,8	25,7	27,9	29,8	32
CODE	20S800	20S900	20S958	20S1058	20S1114	20S1214
RACK HEIGHT (CM)	26,7	26,7	30,8	30,8	34,9	34,9

20 compartment Camracks offer a more secure fit for your glassware and fill the gap between standard 16 and 25 compartment racks, resulting in less movement and breakage. The new design offers a 20% increase in space utilization against standard 16 compartment racks.



16 COMPARTMENTS

Ø MAX. DIAMETER (CM)	11,11	11,11	11,11	11,11	11,11	11,11
MAX. HEIGHT (CM)	9,2	11,4	13,3	15,5	17,4	19,6
CODE	16S318	16S418	16S434	16S534	16S638	16S738
RACK HEIGHT (CM)	14,3	14,3	18,4	18,4	22,5	22,5

16 COMPARTMENTS

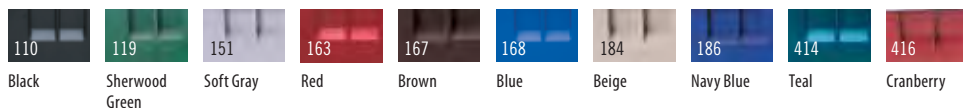
Ø MAX. DIAMETER (CM)	11,11	11,11	11,11	11,11	11,11	11,11
MAX. HEIGHT (CM)	21,5	23,8	25,7	27,9	29,8	32
CODE	16S800	16S900	16S958	16S1058	16S1114	16S1214
RACK HEIGHT (CM)	26,7	26,7	30,8	30,8	34,9	34,9



9 COMPARTMENTS

Ø MAX. DIAMETER (CM)	14,9	14,9	14,9	14,9	14,9	14,9
MAX. HEIGHT (CM)	9,2	13,3	17,4	21,5	25,7	29,8
CODE	9S318	9S434	9S638	9S800	9S958	9S1114
RACK HEIGHT (CM)	14,3	18,4	22,5	26,7	30,8	34,9

Base Rack Colours

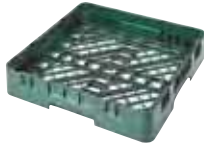


In Stock Colours Base Rack: (110), (119), (151), (163), (167), (168), (184), (186), (414), (416).
Extender: (151).

Other Types of Camracks®

In Stock Colours

BR258: (110), (119), (151), (163), (167), (168), (184), (186), (414), (416).
FR258, 8FBNH434: (151).



DESCRIPTION	*Full Base Rack	Full Flatware Rack	8 Compartment Half Flatware Basket
INSIDE RACK HEIGHT	8,3 cm	6,7 cm	12 cm
OUTSIDE RACK HEIGHT	10,1 cm	10,1 cm	18,4 cm
CODE	BR258	FR258	8FBNH434 No Handles

See colour chart on previous page for Base Rack colours. **Standard Extender Colour:** Soft Gray (151).

*Available with extetneders for additional height requirements.

In Stock Colour

PR59314, OETR314: (151).



PEG RACKS	5 x 9 Peg Rack	Open End Tray Rack
INSIDE RACK HEIGHT	6,7 cm	6,7 cm
OUTSIDE RACK HEIGHT	10,1 cm	10,1 cm
CODE	PR59314	OETR314

Rack colour: Soft Gray (151).

In Stock Colour Cup Rack: (151).



CUP RACKS	16 Compartment Rack			20 Compartment Rack	
MAX. CUP HEIGHT	6,6 cm	10,7 cm	14,9 cm	6,6 cm	10,7 cm
MAX. CUP DIAMETER	11,1 x 11,1 cm	11,1 x 11,1 cm	11,1 x 11,1 cm	11,1 x 8,8 cm	11,1 x 8,8 cm
CODE	16C258	16C414	16C578	20C258	20C414

Rack colour: Soft Gray (151).

Standard Extender Colour: Soft Gray (151).

Cover and Dolly

Camrack Cover

- Helps create a self-contained, portable sanitary storage system.
- Fits any height or stack of racks.
- Eliminates rewashing by keeping out contaminants.
- Eliminates the need for plastic wrap or vinyl covers.

Camdolly®

- Reduce employee lifting and carrying, reducing possible injury and breakage.
- Made of extremely durable plastic that will not dent, crack, rust or corrode.
- Heavy-duty casters maneuver easily over all types of terrain.



CODE	DIMENSIONS L x W x H	COLOUR
DRC2020	50 x 50 x 2,4 cm	Gray (180)
CDR2020	54,3 x 54,3 x 20,3	Soft Gray (151)

In Stock Colour CDR2020: (151).

Dish Caddies and Service Carts

Dish Caddies

Store and transport plates and trays with Cambro's complete line of dish caddies.

In Stock Colours
ADC3: (110), (401), (480).
ADC33: (131).
TDC30: (191).



CODE	ADC3	ADC33	TDC30
DESCRIPTION	Adjustable	Adjustable	Adjustable
PLATES PER COLUMN	Approx. 45-60	Approx. 45-60	Approx. 45-60 (80 Trays: 36 x 46 cm)
OVERALL DIMENSIONS W x L x H	73 x 96 x 81 cm	76,05 x 98,4 x 83,82 cm	59 x 99 x 88 cm
HOLDS	Square and Round Plates from 11,7 to 33 cm	Square, oval and Round Plates from 11 to 73,6 cm	Plates and Trays

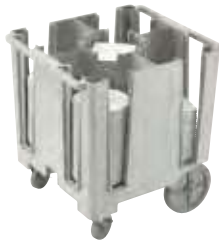
ADC3 Colours: Black (110), Slate Blue (401), Speckled Gray (480), Dark Brown (131).

ADC33 Colours: Dark Brown (131), Slate Blue (401). ADC33 is not available from City of Industry, California.

TDC30 Colours: Black (110), Slate Blue (401), Coffee Beige (157), Dark Brown (131), Gray (180), Granite Gray (191), Granite Green (192).

For more sizes, refer to your Cambro catalog or www.cambro.com.

In Stock Colour
DCS950, DCS1125: (480).



CODE	DCS950	DCS1125
DESCRIPTION	Non-Adjustable	Non-Adjustable
PLATES PER COLUMN	Approx. 45-60	Approx. 45-60
OVERALL DIMENSIONS W x L x H	69 x 78 x 81 cm	69 x 78 x 81 cm
HOLDS	Rounds: 21,3 - 24,1 cm Squares: 18,4 - 20,5 cm	Rounds: 24,4 - 28,6 cm Squares: 21,3 - 24,1 cm

Colours: Black (110), Slate Blue (401), Dark Brown (131), Speckled Gray (480).

For more sizes, refer to your Cambro catalog or www.cambro.com.

Service and Utility Carts

Versatile, durable and economically priced. Carts are shipped "knocked down" to minimize shipping costs.

In Stock Colours
BC340KD, BC340KDP: (110), (480).
BC331KDTC, BC331KDSH: (110).



CODE	BC340KD	BC340KDP	BC331KDTC	BC331KDSH
DESCRIPTION	Large Utility Cart	Single Shelf Panel Set	30 L Trash Container	9,5 L Silverware Holder
LOAD CAPACITY	180 kg	—	—	—
OVERALL DIMENSIONS W x D x H	101,5 x 54 x 95 cm	80,3 x 45 x 29,8 cm	33 x 24 x 56 cm	33 x 24 x 18,5 cm

Cart and Shelf Panel Set Colours: Black (110), Speckled Gray (480).

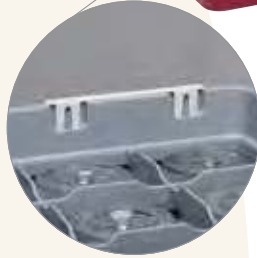
Trash Container and Silverware Holder Colour: Black (110).

Inventory Management & Control

Camrack® Extender ID Clip

Camrack Extender ID Clips make easier glassware inventory management just a quick click away. ID clips simply snap onto the top extender to immediately label contents on-site at any time. Want to find a sustainable way to identify and re-use your existing Camracks to fit new glassware? Clips allow operators to change contents, re-label and continue using the same racks, simply by changing ID clips.

- Offers an economical and sustainable solution to discarding existing racks or labeling with markers, tape or wall placards.
- Virtually unbreakable and designed to withstand the high heat of commercial dishwashers.
- 34 designs available or personalize your own clips!



Trust Cambro®



Camracks have been circulating in hotels, restaurants and catering businesses around the world for over ten years, saving time, money and resources. Operators know that the Camrack system will keep their glassware as well as their customers safe. With a wide variety of compartment and height options available, the complete Camrack 4-in-1 system provides a fully enclosed, portable sanitary storage unit. Eliminate the need to rewash glassware or to purchase plastic wrap. Camracks offer a sanitary, economical and environmentally-friendly option that will continue to show its return on investment year after year. Contact your local rep for a Free Return On Investment quotation and future savings.

Please visit www.cambro.com/mycamracks to take advantage of our new interactive Camrack Sizing Guide.

www.cambro.com

CAMBRO U.S.A.
TEL: 1(714) 848-1555
FAX: 1(714) 230-4375
international@cambro.com

CAMBRO EUROPEAN LOGISTICS
TEL: (49) 7022 90 100 0
FAX: (49) 7022 90 100 19
cambroeuropa@cambro.com

CAMBRO UK
TEL: 0800 587 0057 Toll Free
FAX: 0845 280 3411
cambrouk@cambro.com

CAMBRO IRELAND
TEL: 1800 509 046 Toll Free
FAX: 01 633 55 76
cambroireland@cambro.com