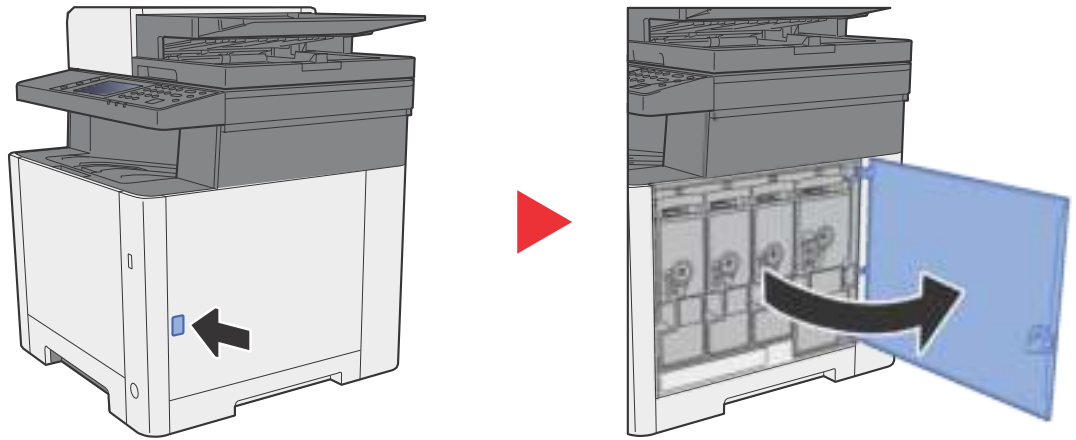


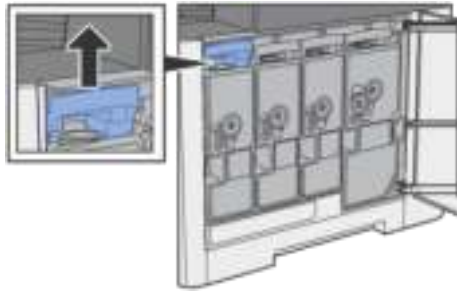
Replacing the Toner Container

Installation procedures of the toner container is same for every color. Here, we'll explain the yellow toner container, as an example.

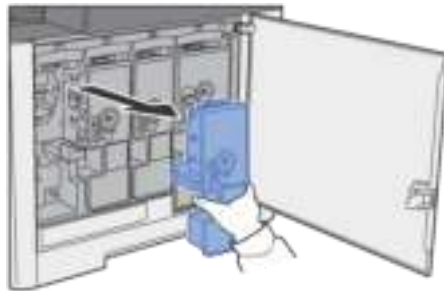
1 Open the right cover.



2 Unlock the toner container.



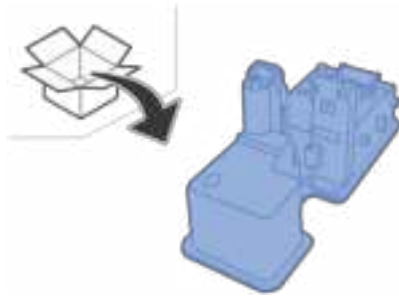
3 Remove the toner container.



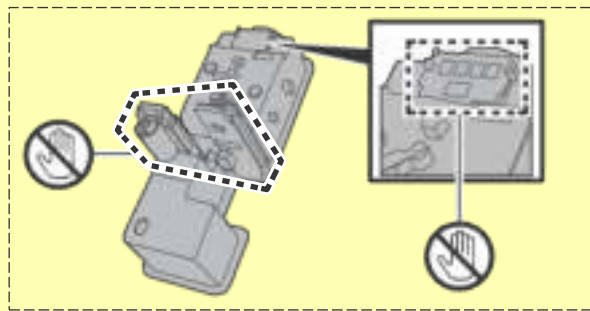
4 Put used toner containers into the plastic waste bag.



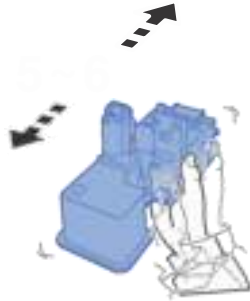
5 Remove the new toner container from the box.



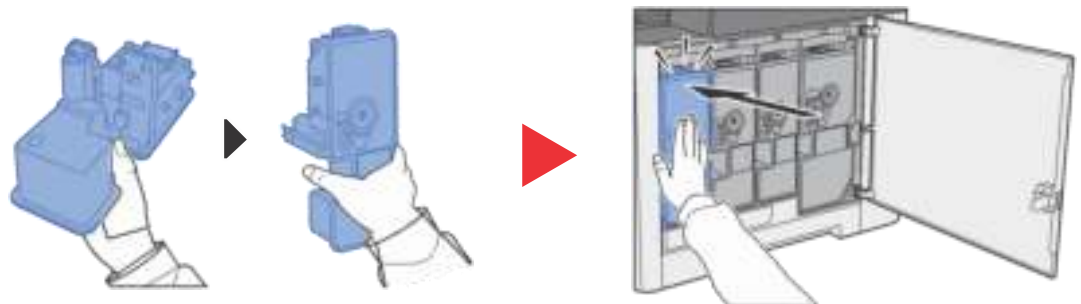
✔ IMPORTANT
Do not touch the points shown below.



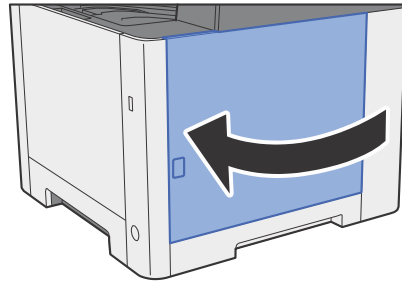
6 Shake the toner container.



7 Install the toner container.



8 Close the right cover.



NOTE

- If the right cover does not close, check that the new toner container is installed correctly.
- Return the exhausted toner container to your dealer or service representative. The collected toner container will be recycled or disposed in accordance with the relevant regulations.

Loading Paper

When Cassette # runs out of paper, the following messages will be displayed.

"Add the following paper in cassette #." (# is a cassette number)

"Add the following paper in the multipurpose tray."

➔ [Loading Paper \(page 3-2\)](#)

[Loading Paper in the Multipurpose Tray \(page 5-5\)](#)

NOTE

If [**Show Paper Setup Message**] is set to [**On**], the confirmation screen for the paper setting will be displayed when a new paper is set. If a paper is changed, select [**Change**] and then change the settings of the paper.

➔ [Cassette 1 \(2\) \(page 8-14\)](#)

[Multipurpose Tray \(page 8-14\)](#)