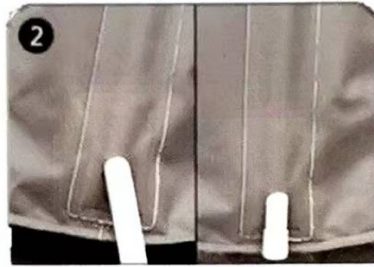


Installation



1. Unfold the bathtub



2. Insert the six plastic tubes



3. Inflate the air ring. When inflating, use a large inflatable head to inflate. When deflating, insert the tail of the air cap into the air nozzle, Holding up black flakes, hearing airflow is OK.



4. Complete

Instructions

1. When used in cold environments, please soak in warm water for 2–3 minutes.
2. When you use the product for the first time, please wash the product with warm water. Do not use corrosive detergent to clean the product.
3. Never start filling the tub with hot water only (max 50 degrees Celsius). Adjust the water to the proper temperature. The water level is filled according to individual needs, and the maximum cannot exceed two thirds.
4. For the first time, the product will have a slight plastic smell, which is normal. Theodor will slowly dissipate over time. We use non-toxic materials; the use of the bathtub is completely safe.
5. Please drain the water of the product after use, please do not allow the product to store water for a long time, otherwise the product will be deformed.
6. When using the product, please do not directly expose the product to hot water above 50 degrees Celsius.