

YW-1002显示屏家用 220V英文说明书

Model: YW-1002 (220V)

Multifunctional Mini Electric Kettle

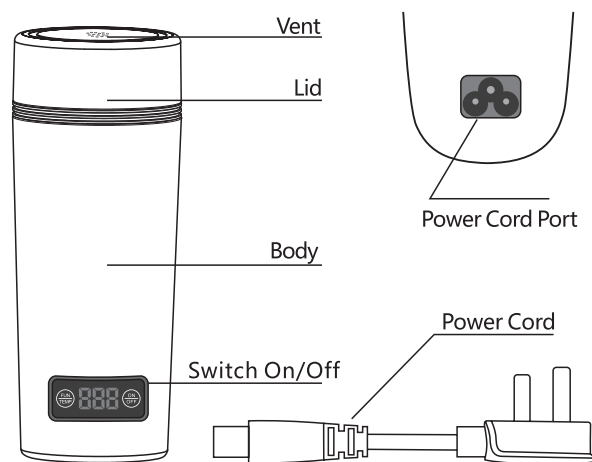


(Picture is for reference only; actual product may vary due to product enhancement)

User Manual

Thanks for purchasing the product from our company.
Before operating this product please read this manual carefully
and retain it for future reference.

Product Overview



Product Specifications

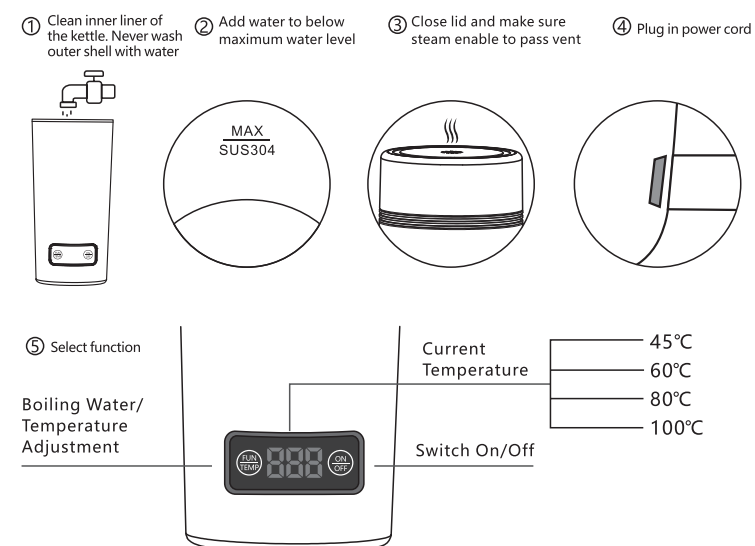
Product Name	Model	Capacity	Rated Voltage	Power	Rated frequency	Heating Time
Multifunctional Mini Electric Kettle	YW-1002	350mL (Not Total Capacity)	220V~	300W	50/60Hz	≈6 Minutes
Standards	GB4706.1-2005,GB4706.19-2008 This product has passed China Compulsory Certification					

Food Contact Materials Information

Part Name	Material	Standard	Note
Inner Container	06Cr19Ni10 SUS304 / SUS316	GB4806.9-2016	The material of liner is subject to the actual products
Inner Lid	06Cr19Ni10 SUS304	GB4806.9-2016	/
Temperature Sensor	06Cr19Ni10 SUS304	GB4806.9-2016	/
Sealing Ring of Lid	Food Grade Silicone	GB4806.11-2016	/

1

Steps for operation



Operating Instruction

- After turning on the power, the screen has lit up once, and the switch key flashes after displaying the real-time temperature.
- Water boiling function: press the power switch key (right button) once, the switch key is always on, the real-time temperature area is displayed as "---", and the function key flashes. Press the function key (left button) again to work 100°C, such as 45°C, 60°C, 80°C. Quickly select the corresponding temperature according to the function, the display flashes for 3 seconds after the heating plate starts working, and the display shows the real-time temperature. When the selected temperature is reached, the heating is stopped, the cup is automatically insulated, and it can be kept warm for 8 hours when it is energized.
- Heat preservation function: select the temperature function key (left button), select 45°C to heat to 45°C, and keep heat 45°C. Choose 60°C to heat to 60°C and stay warm at 60°C. Choose 80°C to heat to 80°C after heating to 80°C. Choose 100°C to heat to 100°C and cool continuously to 80°C to stay warm. Keep warm for 8 hours.
- If you exit the boiling water function, press the power switch once to pause the work; Press the power switch button twice to turn off the power.

2

Using Instruction

- Use voltage should be complied with voltage noted on nameplate (220V or 110V, which cannot be mixed used), use given power cord.
- Clean kettle before using (inner container can be washed by water). Outer shell can only be wiped, washing is forbidden.
- Add water into kettle before boiling water. To avoid overflow water level must be below max water level.
- Insert plug of power cord into socket firmly. Push switch button to start heating (or adjust temperature by pushing select button)
- It is heating, don't move the cup or tilt the cup, and don't place it sideways or upside down for heating to prevent danger or burns.

Safety Precaution I

- Keep product out of reach of children. Don't play with kettle, or it may cause scald or injure.
- After boiling finished please leave it for 2 minutes before opening the lid. Where altitude ≥ 1000m lid must be opened when boiling water, water must be less than 2/3 of the kettle. The power may not cut off automatically but need to be cut off manually.

Safety Precaution II

- Don't drop or hit kettle or it may cause deformation, damage or leakage etc.
- Don't remake, disassemble or repair kettle, or it may cause failure or damage. When necessary please contact manufacturer or customer service department of our company.
- Don't clean kettle with lacquer thinner, gasoline, metal brush, Lucite powder or cleanser, or it may cause scratch or rust.
- Don't clean kettle with dish washer.
- When not in use for long time please store kettle after cleaning and well drying. Don't store kettle in places with high temperature and humidity.
- It is necessary to check whether use voltage and power matches rated voltage and power or not. Both sides of power cord should be connected firmly with kettle and socket. The body of kettle is not waterproof, so it cannot be washed in water, but it can be wiped with wet cloth.
- When heating hum audible is normal. Sometimes due to strong and fast heating on the bottom of kettle there may be yellowing and streak which is normal.
- It is strictly forbidden to soak whole kettle in water.

3

Before First Use

For first use please connect plug to port on kettle firmly in accordance with instruction. Wipe kettle with wet cloth and dry, then add water to max water level and boil. Pour out water and repeat the procedure for two times.

Note: The product cannot be soaked in water. To avoid overflow don't add water over maximum water level (The capacity of this product is 350ml)

Dry Burning Protection

Dry burning protection device will cut off power automatically when the kettle is dry burning without water. In this case if you need to boil water please add cold water after kettle cooling down.

Cleaning and Maintenance

Plug must be taken off from socket before cleaning.

- To avoid electric leakage don't soak kettle in water or get kettle wet.
- Clean outside surface of kettle with wet soft cloth and dry with dry cloth. Never use toxic detergent.
- When not in use or stored, power cord can be removed from kettle for storage.

Remove Limescale

Mineral in tap water or non-distilled water may cause limescale, which affects the performance of kettle. Please remove limescale regularly. You may use professional detergents, or you may use citric acid or lemon as following steps.

- Mix citric acid and hot water (1:20) and add mixtures into kettle until limescale is completely soaked. Then leave the kettle to set for one night.
- Pour out mixtures and boil a kettle of water again. Pour out water and limescale will disappear by itself.

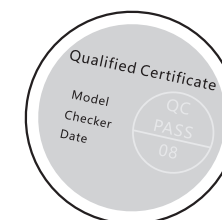
Environment Protection



Pay attention to environment protection!
Please follow local regulations: Dispose waste electrical products and equipment in suitable waste collection points.

4

This product has passed standard inspection



5