



avenli®

AVENLI SPAS THAT FREE YOUR MIND!

Our award-winning spas are designed to create a relaxing oasis and bring convenience to you in ways you thought not possible. We're making the life you've always dreamed of yours. In California, Arizona & Nevada. You'll love it.

COMFORT

We use a heavy-duty, 3-ply material that supports the body. Our hot tubs are built with advanced jets, powerful air, 3000W jets, and more. With over 100 jets, you'll love the relaxing massage and hydrotherapy.

RELIABILITY

Our hot tubs are built to last. We use the best materials and components to ensure you'll enjoy your hot tub for years to come.

PERFORMANCE

Our hot tubs are built to last. We use the best materials and components to ensure you'll enjoy your hot tub for years to come.

avenli® INNOVATION

Dual Heating System (DHS)

Advanced dual-zone heating system. The water is heated and treated by the pump. With 2000W heating system and 2000W heater. Innovative heating (DHS) and dual-zone heat. The DHS is a unique dual heating, dual circulation system, and advanced dual zone.

HES TECHNOLOGY Hydroelectric System

Hydroelectric System

Part: Motor, Turbine, Pump

Effortless Water Treatment

Effortless Water Treatment

Advanced water treatment system. The system uses UV, ozonator, salt, and other technologies to ensure clean, safe water.

Avenli Selection

Anti-UV Coating Layer
Longer service life of spas

Inner Layer
Extra water tight seal

Outer Layer
Smooth and compact bonding of all layers

High Strength Polyester Mesh Layer
Anti-puncture

Heavy Duty I-Beam PVC Core
Higher tensile strength and anti-deformation

- Puncture-resistant 3-ply laminated material with fashionable plain color exterior offer a premium decoration to your spaces .
- Heavy duty i-Beam core provides the ultimate comfort and support.



SPECIFICATION

Control System	AC 220-240V/50Hz; AC 110-120V/60Hz	Certification	EU:CE/GS; US:cETLus
Heater	1540W;1380W	Filter Pump	530GAL/HR
Heating Rate (AT 20°C)	EU:1.5-2.5°C/hour; US:1-2°C/hour	Bubble Jet Holes	105-140

RANK	
PICTURE	
NAME	London
ITEM NO	17612EU/US
TECHNIQUE	12mm O-gly (reinforced PVC)
SEATING CAPACITY	2-3 PLACES
WATER CAPACITY	886L (187gal)
POWER RATED	EU IAC 220-240V/50HZ, 1540w US AC 110-120V/60HZ, 1380w
HEATING RATE	EU 1.5-2.3°C/hour US 1-2°C/hour
SYSTEM FLOW RATE	330GAL/20MIN
MESSAGE	
BUBBLE POWER	400W
CERTIFICATION	EU CE/UL US ETL/UL
OUTER DIAMETER	Ø 61.5cm x 70cm (24.2" x 27.6")
INNER DIAMETER	Ø 42.5cm x 70cm (16.7" x 27.6")
BUBBLE JET HOLES	101
BOX SIZE	61.5 x 45 x 57.5cm
CASE PACK	0.170cbm/48pc/ctn
1x20 CTNS	155
1x40 CTNS	310
1x40HQ CTNS	411

London

17612EU/US

61.5 x 45 x 57.5cm

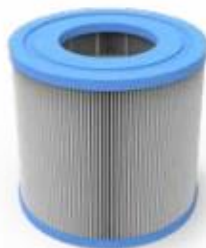
2-3



Filter

290760

- Ø10.5x8cm
- Professional SPA filter cartridge are characterized with 150 pleats
- High water flow
- Shrink wrap
- Case pack: 0.055cbm/48pcs/ctn



Anti-Bacterial Filter

290802

- Extends the life of your filter
- Improves the quality of your water
- Neutralizes bacteria, fungi and algae and prevents their proliferation
- Ø10.5x8cm
- Shrink wrap
- Case pack: 0.055cbm/48pcs/ctn

