

USB TO SERIAL CONVERTER USER MANUAL

MODELS 205146
& 205153




MANHATTAN[™]

MAN-205146/205153-UM-0709-05

Thank you for purchasing this MANHATTAN® USB to Serial Converter, Models 205146 and 205153.

Modern computers are often not equipped with RS232 ports, making the use of legacy peripherals and communication devices more difficult. The MANHATTAN USB to Serial Converter, with its serial RS232 port, easily expands a single USB 1.1 port to connect and support serial modems, barcode scanners, digital cameras, card readers and other devices.

The easy-to-follow instructions in this manual help make installation of the converter quick and simple, so you'll also soon be enjoying the benefits of these additional features:

- Gold-plated contacts and rugged construction provide a reliable connection between the computer and serial peripherals
- Windows compatible
- Plug and Play
- Hot-swappable
- Lifetime Warranty

System Requirements

- USB 1.1 or 2.0 port
- Windows 2000/XP/Vista/7

Package Contents

- USB to Serial Converter
- User manual and driver CD

NOTE: Some screen images have been modified to fit the format of this manual.

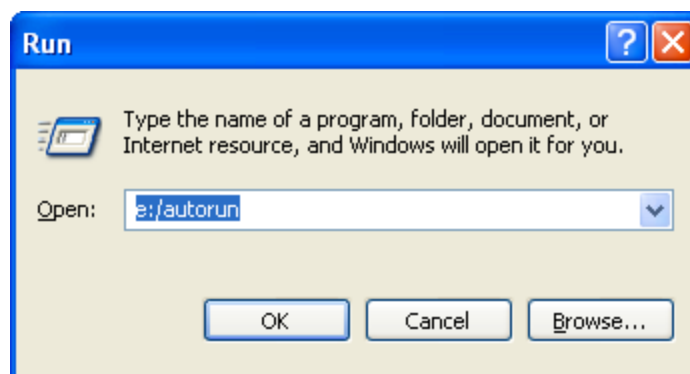
INSTALLATION

Initial Operating System Selection

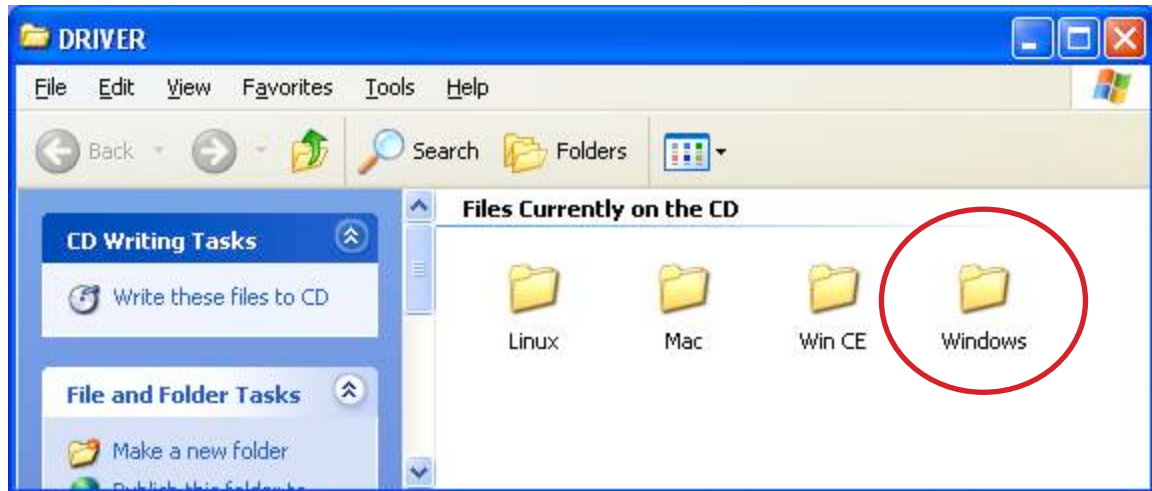
When the included driver CD is inserted in the computer's CD-ROM drive, if the system supports auto run the following screen will display.



If the above screen does not display, go to Start on your desktop, then Run. In the "Open" text field, enter "X:\autorun" (where "X" is the letter designation for your CD-ROM drive, as shown below). Click "OK."

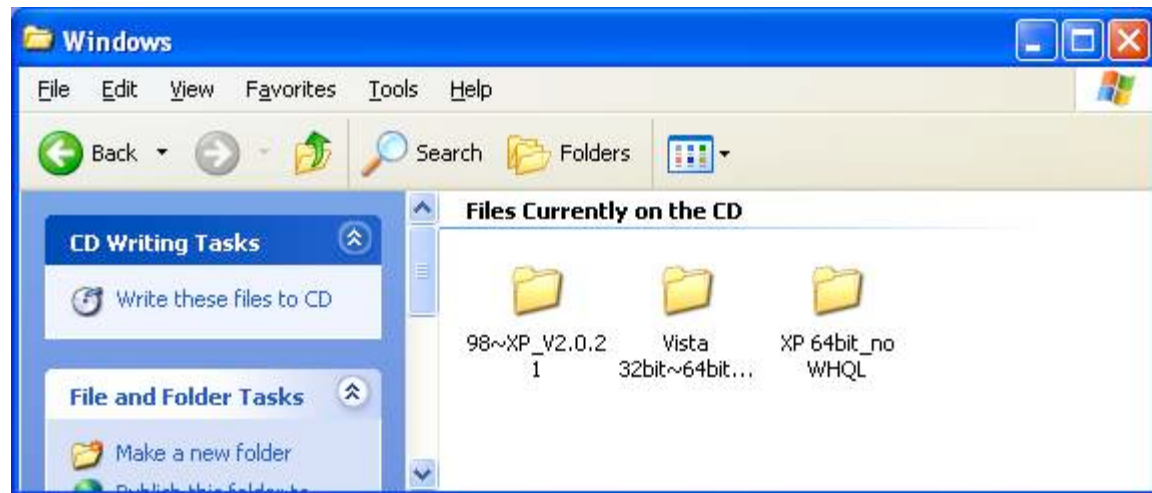


On the subsequent screen, select “Product Driver” to display the Driver screen, which presents a separate folder for different operating systems.

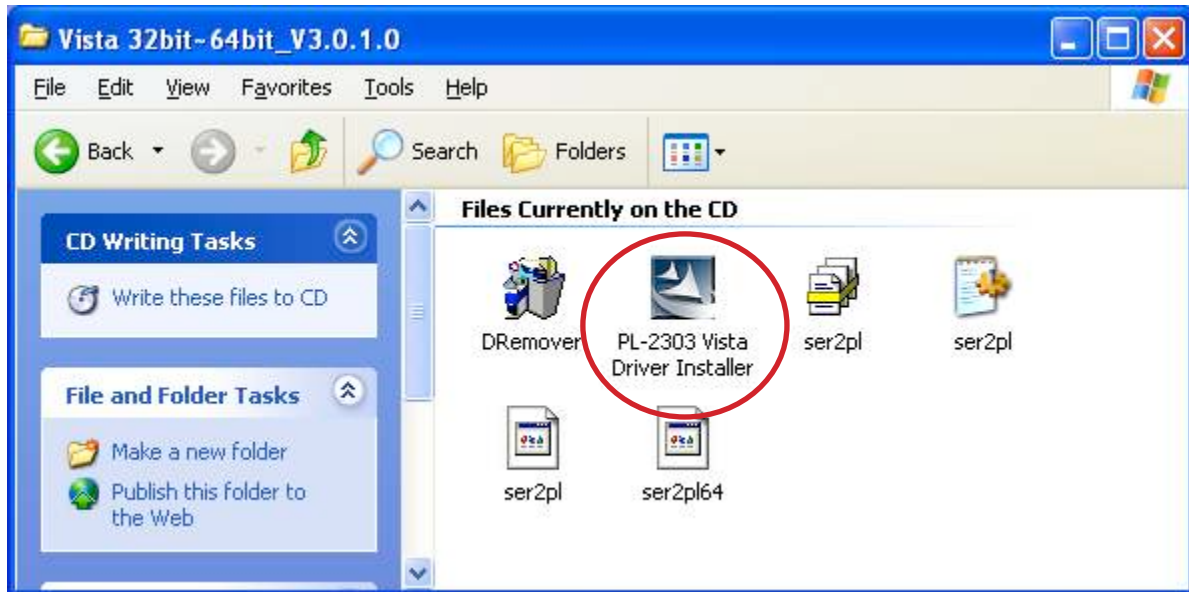


Open the folder that corresponds to your operation system. **NOTE:** This user manual is for Windows installations only.

The Windows screen presents specific versions of its operating system. Open the folder for your computer’s OS.



When the specific Windows OS screen displays, double-click the Driver Installer icon to select/run the program, then follow the on-screen instructions. **NOTE:** You may be prompted to re-boot the computer.



NOTE: The following procedure for Windows 2000 and XP presents XP screen images, which are essentially the same as Windows 2000.

Windows 2000/XP

1. Connect the converter to the serial device and an open USB port on the computer. The Found New Hardware Wizard will run automatically: Follow the on-screen instructions.
2. When the wizard is finished, you may be prompted again to restart the system.

NOTE: In Windows XP only, a Software Certification screen may display (as shown at right). Click “Continue Anyway.”



Windows Vista/7

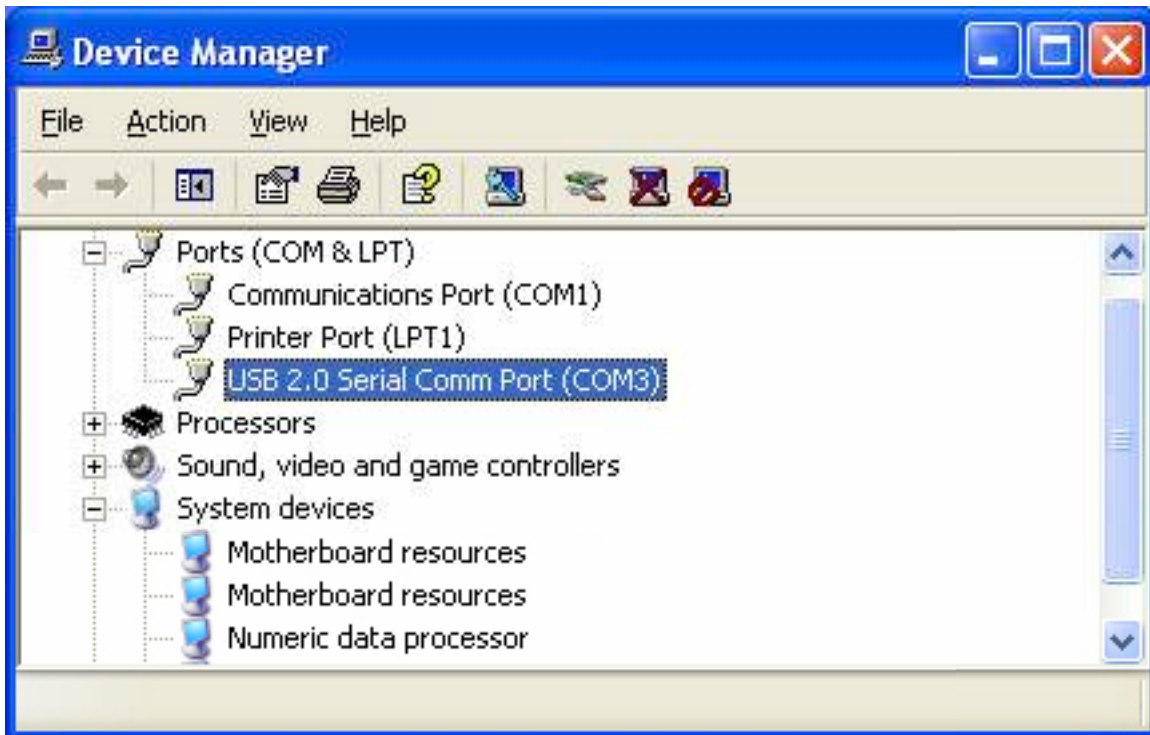
1. Connect the converter to the serial device and an open USB port on the computer.
2. Allow the system to automatically search for updates on the Internet.
NOTE: Make sure the computer is connected to the Internet. The system will automatically download any appropriate update(s) and install the proper driver required for adapter operation. (If the necessary updates are already on your system, the system will find them.)

Installation Verification

1. To confirm that the installation has been successful, right-click My Computer on the desktop to display the System Properties screen.



2. Click “Hardware,” then click “Device Manager.”



3. The device will be presented as shown if it's been installed properly.

SPECIFICATIONS

General

- USB 1.1
- (1) USB port; type-B female
- (1) RS232 port; 9-pin male
- Transfer rate: up to 225 kbps
- Bus powered
- Over-current protection
- 45 cm (18 in.)

System Requirements

- USB 1.1 or 2.0 port
- Windows 2000/XP/Vista/7

Package Contents

- USB to Serial Converter
- User manual and driver CD



MANHATTANTM

BRINGING COMPUTERS TO LIFE

MANHATTAN[®] offers a complete line of PC Components, Peripherals, Cables
and Accessories. Ask your local computer dealer for more information
or visit us online at

www.manhattan-products.com

Copyright © MANHATTAN

All products mentioned are trademarks or registered trademarks of their respective owners.