

SIMPLE MANUAL

# Wireless Sound Bar

Please read this manual carefully before operating your set and retain it for future reference.

To view the instructions of advanced features, visit <http://www.lg.com> and then download Owner's Manual. Some of the content in this manual may differ from your unit.

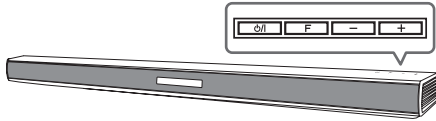
MODEL  
SJ4





## Front Panel

The buttons are located on the rear.

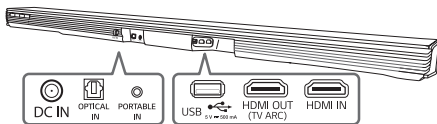


**Power** ..... Standby / On

**F** ..... Selects Function

**- +** ..... Adjusts Volume

## Rear Panel



DC IN ..... Connect to the AC adapter

OPTICAL IN ..... Connect to an Optical device

PORTABLE IN ..... Connect to a Portable device

USB ..... Connect to a USB device

HDMI OUT (TV ARC) ..... Connect to a TV

HDMI IN ..... Connect to HDMI out on a device

## 1 Subwoofer Connection

Place the wireless subwoofer near the speaker and follow steps below.

- 1 Connect the power cord of wireless subwoofer and sound bar to the outlet.
- 2 Turn on the main unit :  
The sound bar and wireless subwoofer will be **automatically** connected. The subwoofer's green LED turns on.

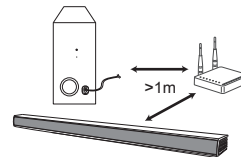
### Subwoofer Connection Manually

If the subwoofer does not make sound, try to connect manually.

- 1 Press **Pairing** button on the rear of the wireless subwoofer.
  - The green LED on the rear of wireless subwoofer blinks quickly.
- 2 Turn on the main unit.
- 3 Pairing is completed.
  - The green LED on the rear of wireless subwoofer turns on.



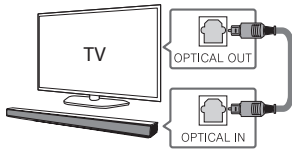
Keep the sound bar and the subwoofer away from the device (ex. wireless router, microwave oven, etc.) over 1m to prevent wireless interference.



Connect with the Sound Bar and TV using Optical (A) or HDMI ARC (B).

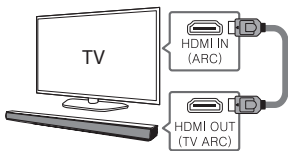
### A Optical Connection

- 1 Connect the sound bar to the TV using Optical cable.
- 2 Set up [External Speaker (Optical)] on your TV setting menu.



### B HDMI(ARC) Connection

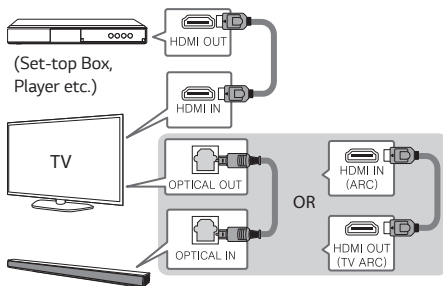
- 1 Connect the sound bar to the TV using HDMI cable.
- 2 Set up [External Speaker (HDMI ARC)] on your TV setting menu.



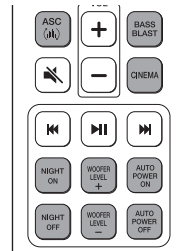
- HDMI connection is unavailable if your TV does not support HDMI ARC.
- If this unit is connected by OPTICAL and ARC at the same time, the ARC signal is a high priority.

### Additional Device Connection

- 1 Connect to the external device as follows.



- 2 Set the input source by pressing F on the remote control or unit repeatedly.



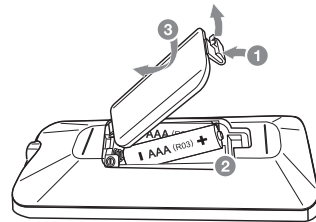
**ASC/BASS BLAST/CINEMA:** Selects the sound effect.

**NIGHT ON/OFF :** Turns down the volume at night.

**WOOFER LEVEL +/-:** Adjusts the volume level of subwoofer.



**AUTO POWER ON/OFF:** Automatically turns on by an input source.

### Replacement of battery



## Additional Information

### Specification

Power consumption	Refer to the main label.
AC adapter	<ul style="list-style-type: none"><li>• Model : DA-38A25</li><li>• Manufacturer : Asian Power Devices Inc.</li><li>• Input : 100 - 240 V ~ 50 - 60 Hz 1.2 A</li><li>• Output : 25 V  1.52 A</li></ul>
Dimensions (W x H x D)	Approx. 890 mm x 55 mm x 85 mm, With foot
Bus Power Supply (USB)	5 V  500 mA
Amplifier (Total RMS Output power)	300 W RMS

Design and specifications are subject to change without notice.

### OPEN SOURCE SOFTWARE NOTICE INFORMATION

To obtain the source code under GPL, LGPL, MPL, and other open source licenses, that is contained in this product, please visit

<http://opensource.lge.com>.

In addition to the source code, all referred license terms, warranty disclaimers and copyright notices are available for download.

LG Electronics will also provide open source code to you on CD-ROM for a charge covering the cost of performing such distribution (such as the cost of media, shipping and handling) upon email request to [opensource@lge.com](mailto:opensource@lge.com). This offer is valid for three (3) years from the date on which you purchased the product.



**CAUTION**  
**RISK OF ELECTRIC SHOCK**  
**DO NOT OPEN**



**CAUTION:** TO REDUCE THE RISK OF ELECTRIC SHOCK DO NOT REMOVE COVER (OR BACK) NO USER-SERVICEABLE PARTS INSIDE REFER SERVICING TO QUALIFIED SERVICE PERSONNEL.



This lightning flash with arrowhead symbol within an equilateral triangle is intended to alert the user to the presence of uninsulated dangerous voltage within the product's enclosure that may be of sufficient magnitude to constitute a risk of electric shock to persons.



The exclamation point within an equilateral triangle is intended to alert the user to the presence of important operating and maintenance (servicing) instructions in the literature accompanying the product.

**WARNING:** TO PREVENT FIRE OR ELECTRIC SHOCK HAZARD, DO NOT EXPOSE THIS PRODUCT TO RAIN OR MOISTURE.

**WARNING:** Do not install this equipment in a confined space such as a book case or similar unit.

**CAUTION:** Do not use high voltage products around this product. (ex. Electrical swatter) This product may malfunction due to electrical shock.

**CAUTION:** No naked flame sources, such as lighted candles, should be placed on the apparatus.

**CAUTION:** Do not block any ventilation openings. Install in accordance with the manufacturer's instructions. Slots and openings in the cabinet are provided for ventilation and to ensure reliable operation of the product and to protect it from over heating. The openings shall be never be blocked by placing the product on a bed, sofa, rug or other similar surface. This product shall not be placed in a built-in installation such as a bookcase or rack unless proper ventilation is provided or the manufacturer's instruction has been adhered to.

#### **CAUTION concerning the Power Cord**

The Power Plug is the disconnecting device. In case of an emergency, the Power Plug must remain readily accessible.

**CAUTION:** The apparatus should not be exposed to water (dripping or splashing) and no objects filled with liquids, such as vases, should be placed on the apparatus.

**NOTICE:** For safety marking information including product identification and supply ratings, please refer to the main label on the bottom or the other surface of the product.

This device is equipped with a portable battery or accumulator.

#### **Safety way to remove the battery or the battery from the equipment:**

Remove the old battery or battery pack, follow the steps in reverse order than the assembly. To prevent contamination of the environment and bring on possible threat to human and animal health, the old battery or the battery put it in the appropriate container at designated collection points. Do not dispose of batteries or battery together with other waste. It is recommended that you use local, free reimbursement systems batteries and accumulators. The battery shall not be exposed to excessive heat such as sunshine, fire or the like.

#### **For models using an adapter**

Only use the AC adapter supplied with this device. Do not use a power supply from another device or another manufacturer. Using any other power cable or power supply may cause damage to the device and void your warranty.

- The appliance is not intended for use by young children or infirm persons without supervision.
- Young Children should be supervised to ensure that they do not play with appliance.
- If the appliance is supplied from a cord extension set or an electrical portable outlet device, the cord extension set on electrical portable outlet device must be positioned so that it is not subject to splashing (of water or any form of liquid) or ingress of moisture.

#### **RF Radiation Exposure Statement**

This equipment should be installed and operated with minimum distance 20 cm between the radiator and your body.





A series of ten horizontal dashed lines spanning the width of the page, intended for writing or drawing.

