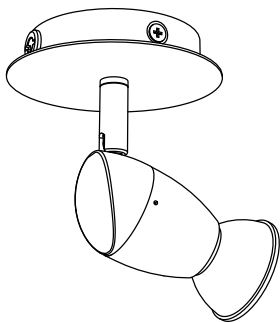


55690/**/16



Gebruiksaanwijzing
Notice d'emploi
Benutzerhandbuch
User manual
Manual de usuario



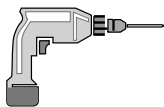
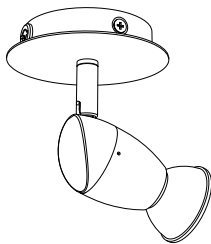
PHILIPS

Incl.

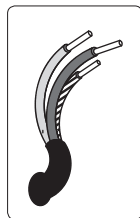
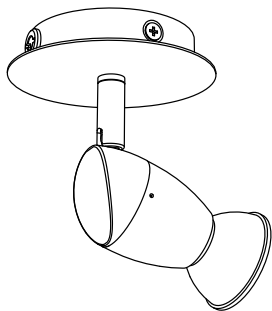
A



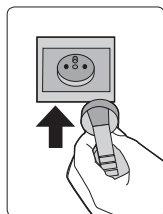
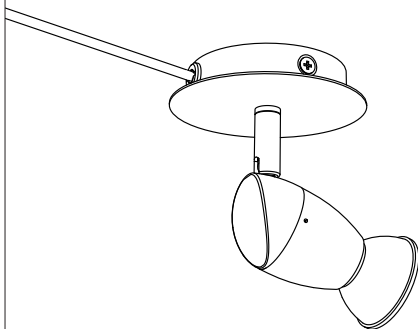
B



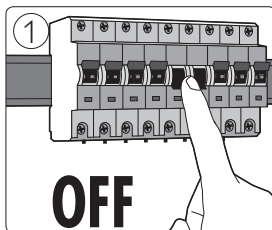
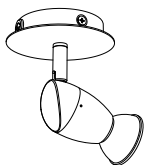
Type 1 → p.4



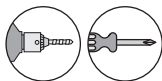
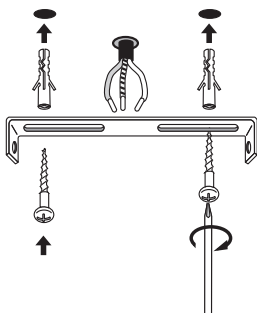
Type 2 → p.6



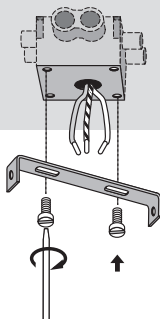
Type 1

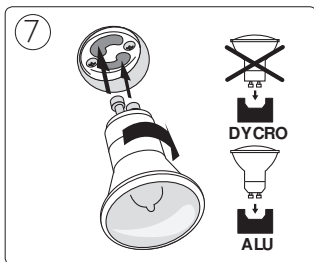
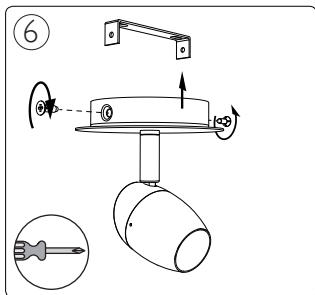
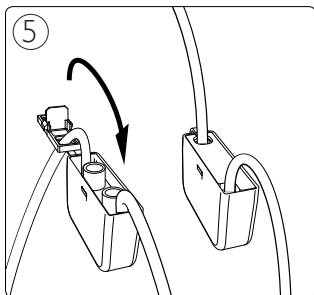
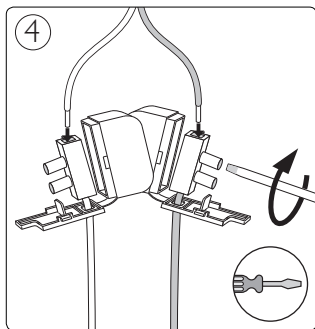
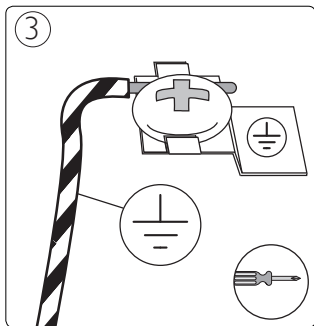


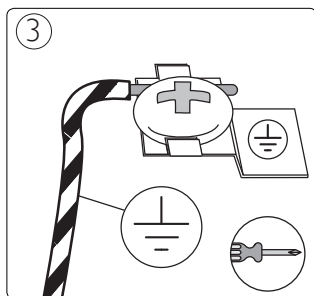
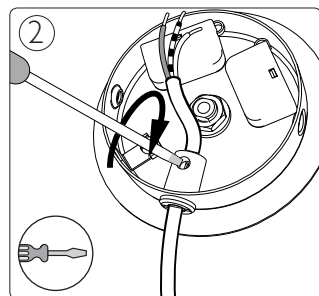
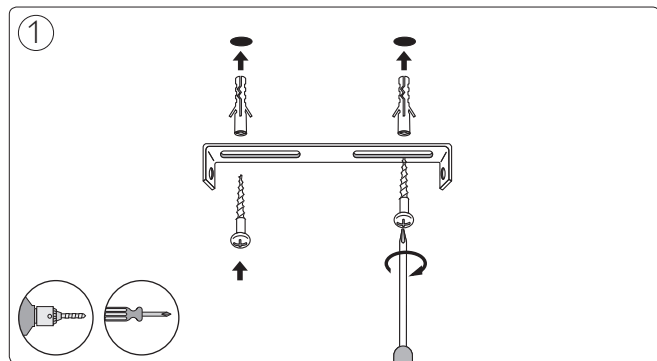
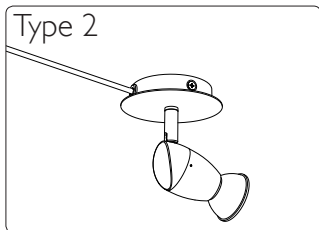
2a

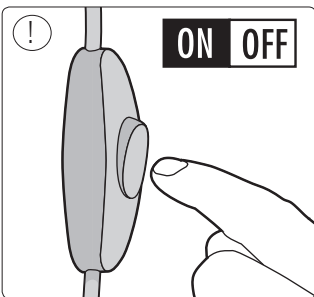
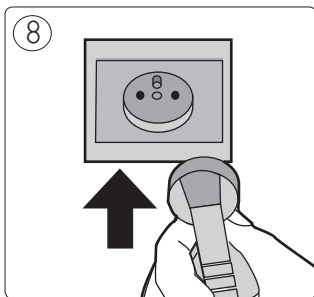
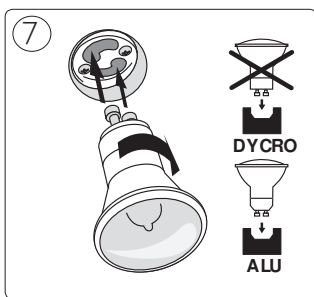
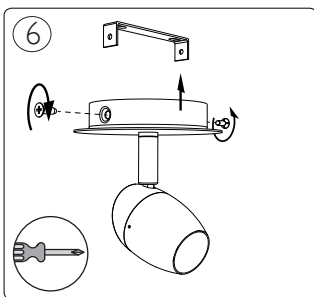
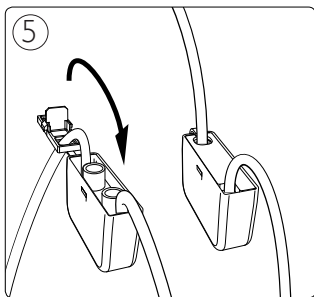
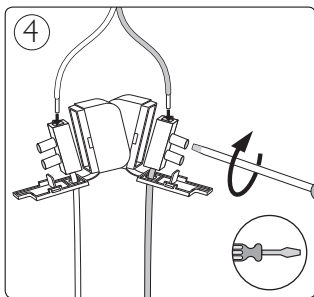


2b











Philips Lighting Contact Centre
Int. Business Reply Service
I.B.R.S. / C.C.R.I. Numéro 10461
5600 VB Eindhoven
Pays-Bas / The Netherlands

www.philips.com/homelighting
☎ +800 7445 4775

4404.018.26161
Last update: 25/03/13