



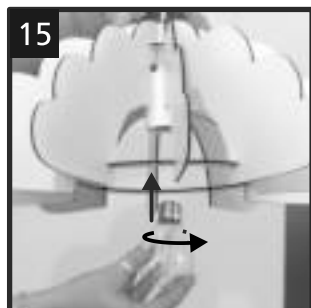
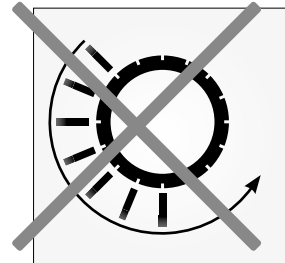
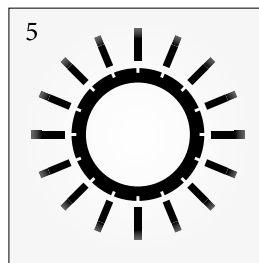
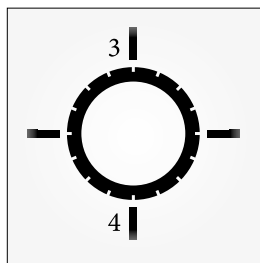
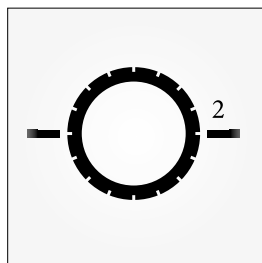
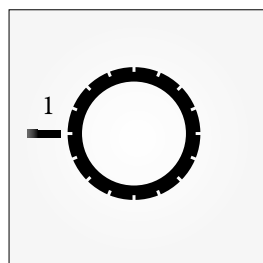
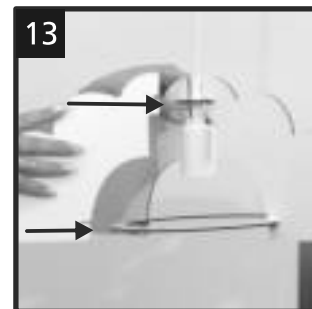
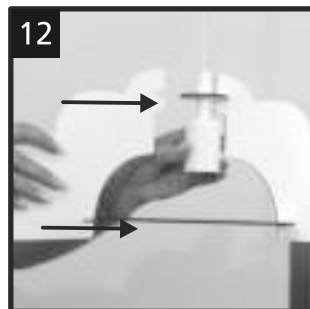
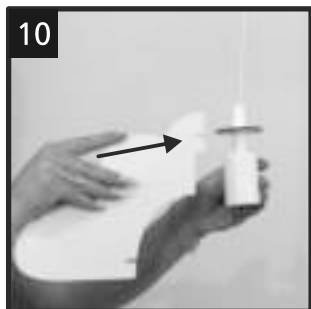
# CHIETI

## Installation and assembly guide

97701, 97703



### 2) Assembly:





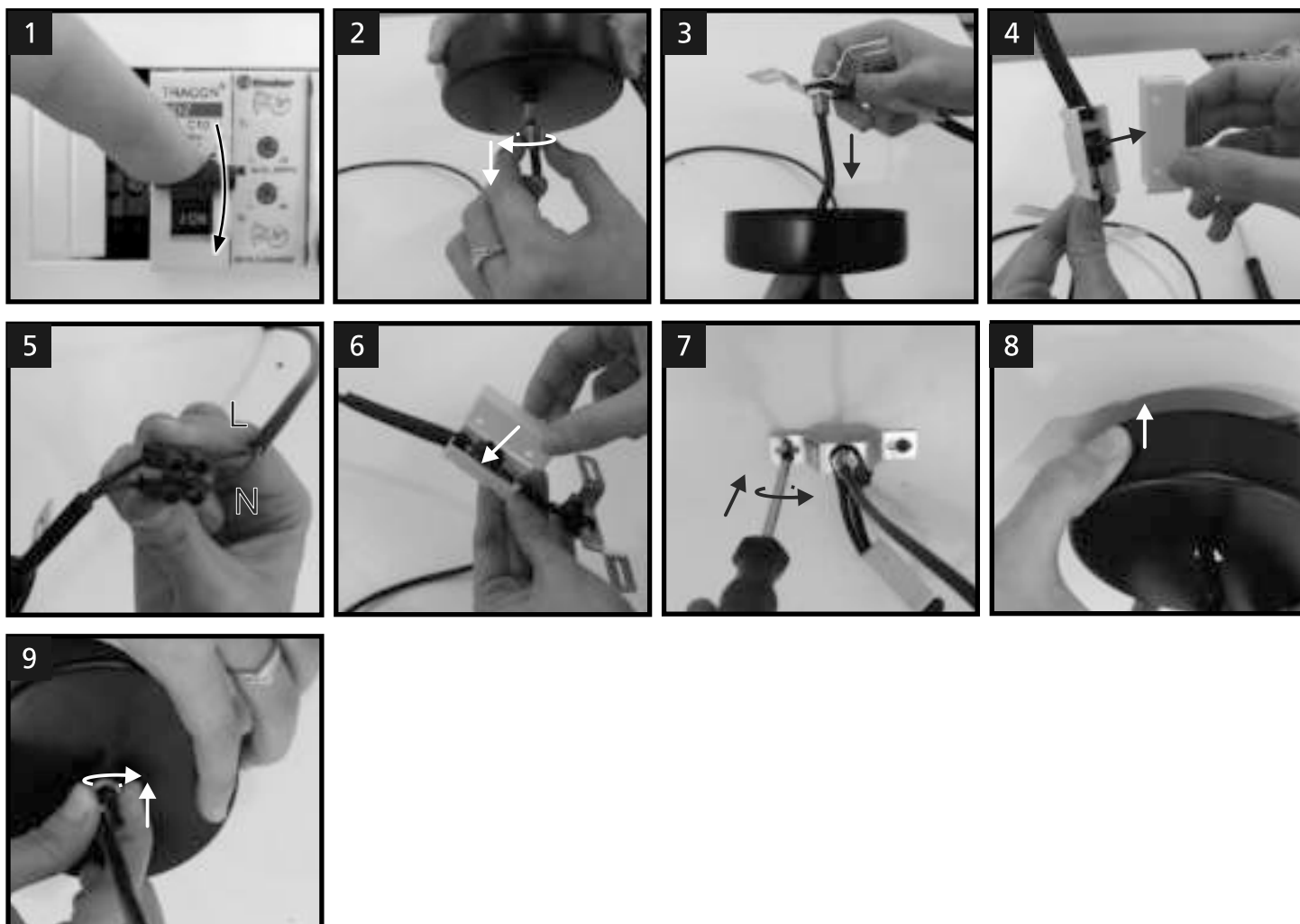
# CHIETI

## Installation and assembly guide

97701, 97703



### 1) Installation:



**DE** Nicht für den mehrmaligen Zusammenbau geeignet.  
Die Produktqualität kann nur bei sachgemäßer Montage garantiert werden.

**E** Not intended for a multiple assembly.  
The product quality can be guaranteed only in case of proper installation and assembly.

**FR** Non destiné à des montages multiples. La garantie du produit est valable uniquement dans le cas d'une installation et d'un montage corrects.

**IT** La qualità del prodotto è garantita solo in caso di corretta installazione e montaggio.  
Non previsto un assemblaggio multiplo.

