

## 1. Welcome

Thank you for purchasing this Honeywell fire alarm.

The alarm is suitable for use in domestic premises (including static holiday homes) and leisure accommodation vehicles (LAVs)

This manual contains important safety information about the installation and operation of the alarm. Please read the manual carefully and keep it in a safe place for future reference. Please also explain the alarm operation to all other occupants of the building.

You are advised to have a Fire evacuation plan, which you should test every month. Everyone in the building should be familiar with the alarm signals, so that they react to them without delay.

### Warnings

To avoid dust and debris contamination, the smoke alarm should be removed from the mounting for the duration of any building work involving dust or debris. If this is not possible then the alarm vents must be fully covered with a plastic bag or tape whilst the work is in progress.

While covered, the alarm will not detect fires or smoke, so it is vital the covering is removed when work is completed each day, and replaced the following day if necessary.

The alarm is permanently sealed for safety, so do not attempt to open it.

1

## 2. Description



Honeywell offers three models of its battery powered fire alarms:

**XH100** is a heat alarm approved to BS5446-2:2003.

**XS100** is an optical smoke alarm approved to EN14604:2005 and uses an optical detection technique only.

**XS100T** is an optical-thermal smoke alarm approved to EN14604:2005, which uses dual detection techniques for quicker response times, wider range of fire types and fewer false alarms.

All have a sealed-in battery with a 10-year lifetime and warranty. They have clear visible status indications for Power (green), Fault (yellow) and three extra-large Alarm indicators (red).

In addition, all versions have an audible alarm and a **TEST/HUSH** button.

2

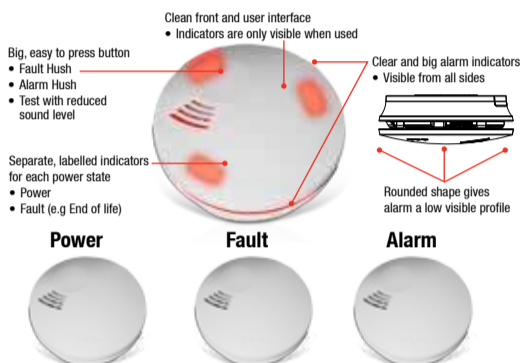
Each fire alarm has a dot on its side indicating which type of alarm it is.

Optical-thermal smoke alarm	Heat alarm	Optical smoke alarm
•	• •	• • •

All Honeywell X-Series alarms (including optional X-Series Carbon Monoxide alarms) can be wirelessly interconnected using an optional plug-in module. This means that if one X-Series Alarm triggers an alarm, all interconnected units will give a loud audible alarm (85dB) as well. This is especially useful, when living in a large or multi-story dwelling. Some wireless module information is included in this manual for completeness. If equipped, the module will use the indicator for Wireless (blue) on the Fire Alarms.

3

## 3. Fire Alarm Operation



All alarms have three (four, if equipped with wireless module) status indicators and a **TEST/HUSH** button.

The green **POWER** light indicates that the unit is activated and working normally.

The red **ALARM** light indicates that a fire has been detected.

The yellow **FAULT** light indicates that the unit is not working properly.

The **TEST/HUSH** button is used to test the unit, or to mute an alarm or fault signal.

### Normal operation

The green **POWER** light will flash once per minute, to indicate that your alarm is working\*.

5

\*Note: There is an option to disable the flashing power light during initial setup e.g. for installation in bedrooms. Please see the installation instructions for further details.

### Alarm

If a fire is detected, the red **ALARM** indicators will flash and the loud audible alarm will sound continuously. You should immediately evacuate the premises and then contact the emergency services. (Do not pause to collect property or to ring for help.)

However, if you are certain that it is a false alarm caused by steam, cooking fumes or burnt toast; you can press the **TEST/HUSH** button to silence the alarm for 5 minutes while the air clears.

Caution: If you cannot reach the alarm from floor level, use a broom handle (or similar) to press the test button. Please do not climb on anything to help you reach.

Note: The Alarm **HUSH** function will silence the alarm for 5 minutes after which the alarm will return to full sensitivity. The Alarm **HUSH** function can be operated repeatedly if required.

### Faults

If the unit is in **FAULT** the **YELLOW** light will flash every minute with one short chirp. (The only exception is a wireless module fault, which is signalled with 3 chirps. In this case, refer to the wireless module manual for further details).

3

If there are other alarms connected to it in a network, they will flash and chirp every four hours to show that an alarm somewhere in the network has a fault, and that it needs to be investigated.

Once the alarm in the fault state is located, counting the number of chirps and flashes will establish whether it is a wireless module fault or a smoke alarm fault.

The chirps can be silenced for 24 hours by pressing the **TEST/HUSH** button until the yellow LED blinks. Pressing the button again will restore the chirps. The 24 hour period can be restarted by pressing the **TEST/HUSH** button twice. When a remote fault occurs, press the **TEST/HUSH** button on the alarm that is in the fault state as that will hush the other alarms in the network.

You must investigate and clear all faults without delay. When you find the faulty alarm:

- Check the 'Replace by...' date, and replace the alarm if it has expired.
- Check the dates on all of the other alarm modules if one module has passed its 'Replace by...' date.

Note: The fault signal could be caused by a low battery, or an electronics failure, or by dust entering the unit and obstructing the optical sensor.

A replace by date is also printed on the side of the unit to facilitate an advance replacement before the end-of-life signal is given. This date includes a 6 months shelf life, i.e. this is the latest date the unit should be replaced.

7

### 3. Fire Alarm Operation continued

Status	Lights and Sound				Meaning
	Alarm (Red)	Power (Green)	Fault (Yellow)	Sound	
<b>NORMAL OPERATION*</b>	○	●	○	🔊	Normal operation No smoke and/or heat present  Flashes once every minute. *NB light can be switched off (see installation section)
<b>ALARM</b>	●	○	○	🔊	Smoke and/or heat detected  3 chirps and flashes continuously for 60 minutes. Pattern is then repeated once every 30 seconds.
<b>REMOTE FIRE ALARM or REMOTE CARBON MONOXIDE ALARM**</b>	○	●	○	🔊	Fire detected by an interconnected fire alarm or Carbon monoxide leak detected by an interconnected Carbon Monoxide alarm  Fire ALARM: 3 chirps continuously / Carbon Monoxide ALARM: 4 chirps continuously. This alarm will be broadcasted on the network
<b>REMOTE FAULT**</b>	○	○	●	🔊***	A wireless connected unit is in fault  Networked units – 4 chirps and 4 flashes every 4 hours. The fault will be broadcasted on the network
<b>WIRELESS MODULE FAULT**</b>	○	○	●	🔊*	The wireless module is not working correctly. Refer to the wireless module manual for further details  Unit with the fault – 3 chirps and 3 flashes every minute. This fault will not be broadcasted on the network
<b>FAULT</b>	○	○	●	🔊*	The unit has reached its end of life and must be replaced  1 chirp and 1 flash every minute

\*unless the light is switched off during installation

\*\*only applicable when a wireless connection plug-in module is installed

\*\*\*unless muted by pressing the TEST/HUSH button

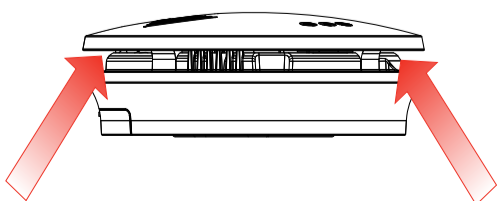
### 4. Precautions during use

The fire alarms do not require any maintenance other than to clean the outside case occasionally with a damp cloth and mild detergent.

For the smoke alarms (XS100T, XS100) ensure that the openings on the side of the unit are not blocked with dust or dirt.

Dust and insect contamination can inhibit the operation of the smoke alarm. Use a vacuum cleaner to ensure that it is kept clean and free of dust and other contamination.

Warning: Do not paint the detector



13



The CE mark affixed to this product confirms its compliance with the European Directives which apply to the product and, in particular, its compliance with the harmonised specifications of standard EN 14604 relating to Construction Products Directive 89/106/EEC.

The NF – Smoke Alarm Devices mark provides assurance as to safety and consistent quality inspected by experts.

Through its rigorous and exhaustive inspections (holder's quality management system, product inspections, audits and monitoring tests, etc.), the NF mark represents a comprehensive guarantee for consumers that the certified products are compliant.

The NF - Smoke Alarm Devices mark confirms the product's compliance with certification rules NF 292.

Essential certified features covered by the NF mark	
NF EN 14604: 2005 Dispositif d'alarme de fumée / Smoke Alarm Devices	
Type of mounting	Wall only <input type="checkbox"/> YES <input checked="" type="checkbox"/> NO
	Ceiling only <input type="checkbox"/> YES <input checked="" type="checkbox"/> NO
	Wall or ceiling <input checked="" type="checkbox"/> YES <input type="checkbox"/> NO
Battery duration of the main power supply	<input type="checkbox"/> 1 year <input type="checkbox"/> 5 years <input checked="" type="checkbox"/> 10 years
Interconnectable device	<input checked="" type="checkbox"/> YES <input type="checkbox"/> NO <input type="checkbox"/> wire <input checked="" type="checkbox"/> radio
Suitable for installation in a mobile home	<input checked="" type="checkbox"/> YES <input type="checkbox"/> NO
Connection to external ancillary devices	<input type="checkbox"/> YES <input checked="" type="checkbox"/> NO
Radio link	<input checked="" type="checkbox"/> YES <input type="checkbox"/> NO
	<input type="checkbox"/> Central alarm system <input checked="" type="checkbox"/> Other
Individual alarm indicator	<input checked="" type="checkbox"/> YES <input type="checkbox"/> NO
Alarm silence facility	<input checked="" type="checkbox"/> YES <input type="checkbox"/> NO
Accessibility Option	<input type="checkbox"/> YES <input checked="" type="checkbox"/> NO

Certification Body  
AFNOR Certification, 11, rue Francis de Pressensé, F-93571 La Plaine Saint-Denis Cedex  
Telephone: +33(0)1 41 62 80 00 Fax: +33 (0)1 49 17 90 00 E-mail: certification@afnor.org  
Websites: www.afnor.org and www.marque-nf.com

### This package contains:

- Either an optical smoke alarm (XS100), an optical-thermo alarm (XS100T) device or a heat alarm (XH100), which uses the light scattering or transmitting principle.
- Absence of radioactive substances.
- Delivered with a battery
- Installation recommendations with screws and wall plugs
- Ergonomics validated to limit the risks of incorrect use (battery "forgotten", battery inserted incorrectly, etc.)
- Product's marking and documentation in French
- Product delivered with clear and explicit installation and maintenance instructions
- Environmental protection: manufacturer's membership of a waste management association with its logo
- Related service: consumer helpline

8

### Operating and Installation Instructions

Honeywell



### Contact us

www.homesafety.honeywell.com  
www.honeywellanalytics.com  
www.honeywell.com

Honeywell

France Customer Service Centre:  
Honeywell Environmental Controls  
ZI de Borly  
72, chemin de la Noue  
74380 Cranves Sales  
France  
Tel: 08 10 59 60 63  
www.honeywell-confort.com

Please Note:  
While every effort has been made to ensure accuracy in this publication, no responsibility can be accepted for errors or omissions. Data may change, as well as legislation, and you are strongly advised to obtain copies of the most recently issued regulations, standards, and guidelines. This publication is not intended to form the basis of a contract. Please retain product documentation for the lifetime of the product.

Acts for and on behalf of Life Safety Distribution AG,  
Javastrasse 2, 8604 Hegnau, Switzerland by its Authorised Representative Honeywell Inc.

xxxx-xxxx-xxxx  
MAN0982\_Issue 1\_01/15\_EN  
© 2015 Honeywell Analytics

### 5. Testing your alarm

#### Automatic self-test

Your fire alarm has a self-test function, which is performed automatically every 10 seconds.

#### Monthly Test

The fire alarm should be tested monthly to check that all visual and audible signals are working.

Press the **TEST/HUSH** button for 1 second to activate a full test cycle showing all lights/messages (green, yellow, red) and sound with the audible output at a reduced level

Hold the **TEST/HUSH** button for 10 seconds or more if you want to test the full 85dB sound level.

#### Test/Measuring mode overview:

Press the button for	1 s	2 s	3 s	4 s	5 s	6 s	7 s	8 s	9 s	10 s	11 s	12 s	13 s	14 s	15 s	16 s	17 s	18+s
Unit mode		Green Flash + chirp	Yellow Flash + chirp	Red Flash + chirp	Reduced volume alarm pattern			Pause		High volume alarm pattern			Pause			Remote Test* (see 'Monthly Test with Wireless Function' note below)		
		Done even if button released			Will go back to Normal mode as soon as button released						Button may be released							

Caution: If you cannot reach the alarm from floor level, use a broom handle (or similar) to press the test button. Please do not climb on anything to help you reach.

#### Monthly Test with Wireless Function

To test your wireless alarm communication, press the test/hush button on one alarm and keep it pressed. Once the alarm has completed its full volume alarm test, it enters a Remote Test state comprising one red LED flash with a chirp every 6 seconds. This is repeated by all interconnected alarms, enabling each connected alarm to be checked at the same time. Pressing the test/hush button again returns the alarms back to the Normal Condition. Alternatively, the alarms will return to a normal condition after 10 minutes if the test/hush button isn't pressed.

For more information, refer to the Wireless Module manual.

14

15

16

## 6. Specification

Reliability	
Detection principle	XS100T: Optical with thermal assistance XS100: Optical XH100: Thermal
Approvals	XS100T, XS100: CE EN14604:2005/AC:2008 VdS Q-label (vfdb14-01) NF292  XH100: BS5446-2:2003 BSI Kitemarked
Other compliances	RoHS, REAcH, R&TTE and EMC
Self-test function	Every 10 seconds
Lifetime and warranty	10 years
Operating environment	
Temperature	-10 °C to 55 °C
Humidity	25-93% Relative Humidity (non-condensing)
IP rating	IPX2D
Electrical and interconnection	
Power supply	Long-life lithium battery, 3V sealed-in
Wireless	A separately sold wireless plug-in module XW100 is available
User interface	
Visual indicator	Power: Green LED Alarm: 3 large red LEDs Fault: Yellow LED Wireless (if installed): Blue LED
Audible	>85 dB @ 3 m with distinct fire alarm sound (3 chirps)
Button	Test with reduced sound level Alarm hush Fault hush (24 hours)
Product	
Size	Ø 116 mm x 42 mm
Weight	190 g
Packaging	
Type	Carton Box with Euro-hole hanger
Dimension	119 x 119 x 55 mm
Scope of supply	Fire alarm including sealed battery

21

## 10. Deactivating the power light flashes

Once fully mounted in the mounting plate, the green power light will flash every minute to show that the batteries are OK. However, this might be annoying in bedrooms, so you have the option to stop this happening.

### Warning

The optional power light de-activation can only be done during the first 30 seconds after pushing the alarm fully into the mounting plate!

To deactivate the power light flashes, press the **TEST/HUSH** button five times during the first 30 seconds after pushing the alarm fully into its mounting. The power light will flash each time the **TEST/HUSH** button is pressed. If deactivation is successful, the green **POWER** light will flash five times in conjunction with short chirps

25

## 16. Troubleshooting and getting assistance

If you have carefully read all of these instructions and your alarm still fails to work, contact the nearest customer service centre listed in the 'Contact Us' section. Our Customer Service advisors may be able to resolve your problem quickly. Alternatively you can contact your local supplier.

To return the alarm for repair or replacement, please either use the original packaging or put it in a solid box or padded envelope with a letter describing the fault. To prevent inadvertent activation in transit, please switch off the alarm by removing it from the mounting plate.

Please notify your postal service that the package contains sealed batteries, as they might be restricted or forbidden postal items.

Proof of purchase must be provided if you want to claim repair under the warranty.

## 17. Recyclable packaging



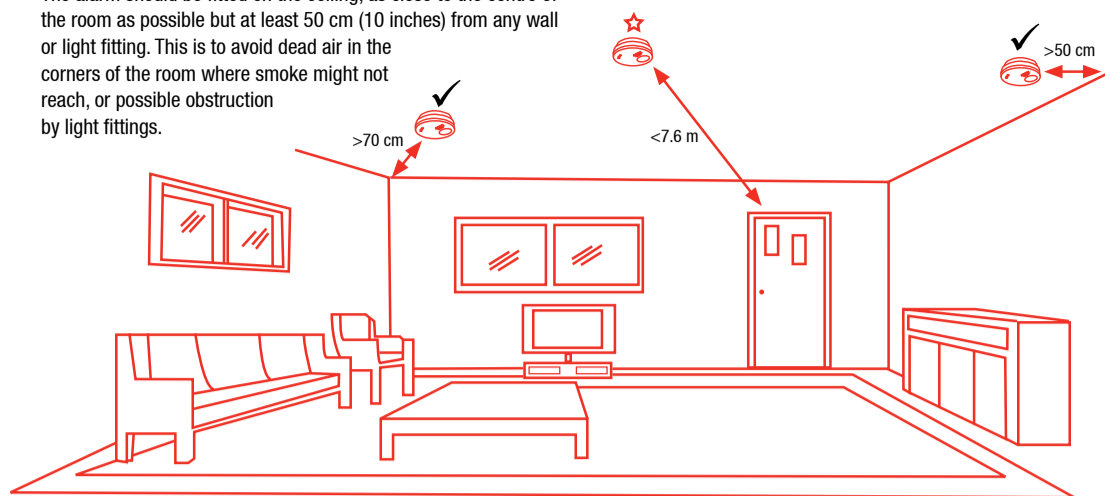
The Green Dot logo signifies that we are a member of an organisation which collects and recycles packaging. Our packaging is widely recycled using local facilities.

29

## 7. Installation – Where to site the alarms

### Preferred locations

The alarm should be fitted on the ceiling, as close to the centre of the room as possible but at least 50 cm (10 inches) from any wall or light fitting. This is to avoid dead air in the corners of the room where smoke might not reach, or possible obstruction by light fittings.



★ Optimal

✓ Satisfactory

The alarm should be fitted where you can hear it when you are asleep, for example in the hallway outside your bedrooms. This will also protect you from smoke rising up the stairs from a lower level.

Note: National regulations differ with respect to quantity and placement of smoke detectors. If in doubt, please check, for example by contacting your local Fire Service.

19

20

This section provides general recommendations for the location of battery powered fire alarms in residential premises. Please ensure that you also follow country specific regulations and guidelines such as the British BS5839-6 or the German DIN14676. For example, certain countries require the installation of interconnected mains powered fire alarms.

The selection of the correct fire alarm model depends on the location it will protect.

### Where to install Smoke Alarms (XS100T and XS100)

Ideally a smoke alarm should be installed in every room of a house, except kitchens, bathrooms and garages. As a minimum, one smoke alarm should be fitted on every level of the house, including stairways. While the XS100 smoke alarm is sufficient for this purpose, the XS100T optical-thermal fire and smoke alarm is specially recommended for use on exit routes and stairways as it has the potential to detect heat build-up in narrow or high areas where smoke may not reach the alarm.

### Where to install Heat Alarms (XH100)

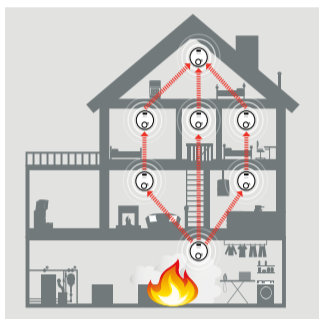
Heat alarms should be installed where smoke alarms can't go, as they are not affected by fumes, vapours or condensation. I.e. they can go in kitchens, bathrooms or garages.

18

## 7. Installation – Where to site the alarms continued

### Using alarms in a network

Networked alarms can give advance warning of potential danger from hidden fires. They operate as shown below.



## 8. Installation – Where not to put the alarm

### Where not to put the Smoke Alarms (XS100T and XS100)

A smoke alarm (XS100T, XS100) should not be installed in bathrooms or kitchens where steam or cooking fumes could give rise to false alarms, or in a garage where it could react to exhaust fumes from your vehicle.

### Where not to put the Heat Alarm (XH100)

Heat alarms should not be installed in locations where local regulations require a Smoke alarm that satisfies EN14604. Check with your local fire and rescue service if you are unsure.

22

## 11. First time switch on

First read the paragraph above and decide whether or not you want the power light to flash.

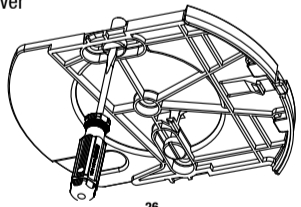
To switch on the alarm:

1. Fit the alarm onto the ceiling mounting plate approximately 10 mm off centre
2. Press firmly against the mounting plate and slide the alarm sideways until the locking tab clicks
3. The unit will automatically switch on

## 12. For Tamper Proof Ceiling Mounting

The alarm can be locked via use of a tamper-proof clip on the mounting plate. This should be removed before installation.

1. Break off the removable clip. Pliers can be used if required.
2. Fix the alarm in place on the ceiling.
3. The alarm can now only be removed (and turned off) by using a screwdriver



26

## 18. End of Life



This product complies with the Waste Electrical and Electronic Equipment (WEEE) Directive 2002/96/EC.

Components or assemblies bearing this or similar symbols shall not be treated as household or municipal waste. Waste electrical products (end of life) shall be recovered and disposed of at specialist WEEE disposal facilities.

Please contact your local authority, your distributor, or the manufacturer if you require more information about recycling WEEE.



## 19. Disclaimer

Smoke and Fire alarms are designed to alert you to the presence of potentially dangerous smoke or fire. They are not designed or intended to remedy a fire or to locate or record a specific source of fire. Honeywell shall therefore not be held liable to pay for any fire investigation or service call carried out or arranged in response to an alarm.

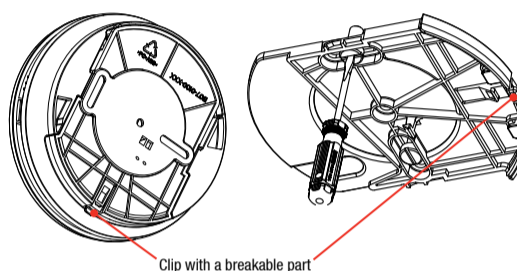
Dust and insect contamination is beyond our control, it is totally unpredictable and is considered normal wear and tear. For this reason, contamination is not covered by the warranty.

30

## 9. Installation – Mounting the Alarm

### The Alarm pack contains:

- 1 x Fire Alarm
- 1 x Ceiling mounting plate
- Plugs and screws
- Instructions (this document)



The alarm must be fixed horizontally and to the ceiling using the enclosed mounting plate. The mounting plate can be screwed to the ceiling using either the central hole or the two slots in the ceiling mounting plate (see diagram).

Fitting the alarm to the plate will switch it on.

Note: In special circumstances an alarm may be mounted on a wall.

23

## 14. Decorating and Building Work

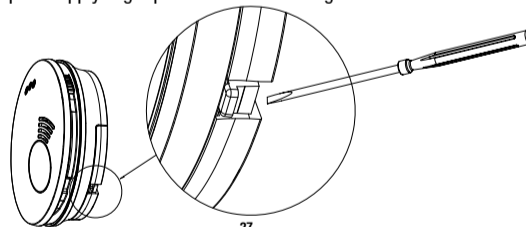
You are advised to cover or remove the alarm during decoration and building work to protect the alarm from inadvertent operation, damage, or the ingress of dust or debris.

Please ensure that alternative safety arrangements are in place while the alarm is covered and inoperable, and ensure that the protection is removed when work has stopped for the day. Failure to do so could lead to loss of life.

24

## 13. Switching off the Alarm

The alarm is switched off by removing it from the ceiling mounting plate. To remove the alarm, press on the tamper proof tab located at the edge of the alarm, and then slide the alarm to the side to remove it from the mounting plate. If the tamper proof option has been used, insert a small screwdriver carefully into the gap and apply slight pressure before sliding the alarm to the side.



27

## 20. Warranty

Honeywell warrants your new fire alarm for ten years from the date of purchase by the end user or until the expiry date on the side of the unit, whichever occurs first, according to the specifications as set out in this instruction manual.

We will, at our discretion, repair or replace, with the same or a similar product, any part of the fire alarm which is found to be defective in either materials or workmanship within the warranty period.

We shall be under no obligation to repair or replace units which are found to be defective in any way due to unreasonable use or neglect, improper storage, if not used or maintained in accordance with its user manual, or if the product has been tampered with or found to have been dismantled (other than as specified in its user manual).

The warranty supplied with this product does not replace your statutory rights, but our liability under the warranty is limited to the price of the faulty product.

In no event are we liable for (a) any direct, indirect, incidental, consequential loss; (b) any loss arising from business interruption; (c) loss of profits; (d) loss of revenue; (e) loss of use of any property or capital; (f) loss of anticipated savings or loss of data due to the use of this product.

31

## 15. Conformance

The XS100 and XS100T have been tested and approved to EN 14604 for compliance with Construction Products Regulations.

The XH100 has been tested and approved to BS 5446-2, fire detection and fire alarm devices for dwellings, specification for heat alarms.

The XS100T, XS100 and XH100 comply with the current EMC and ROHS directives.

The XW100 radio module complies with the R&TTE directive.

28

## 21. What to do in the case of a fire alarm

- Raise the alarm by shouting Fire, Fire, Fire, or by banging metal objects together.
- Get out straight away, using the nearest fire exit.
- Do not stop to investigate the fire or to collect valuables or pets.
- Use your escape route to get everyone out and meet at an agreed point.
- Close any doors which are open, and only open the doors you need to go through. This will help to stop the fire spreading so rapidly.
- Check doors and handles with the back of your hand. If they feel warm, don't open the door as the fire is on the other side.
- If there is a lot of smoke, crawl along the floor as the air and visibility will be better.
- Once you've got everyone out of the building, call the Fire Brigade from any phone. Give the operator your name and address.
- Don't go back into the building for anything. If there is still someone inside, tell firefighters when they arrive – they will be able to find the person quicker and more safely than you.
- Find somewhere safe to wait for the Fire Brigade. When they arrive, try to give them as much information as possible about the fire and building.

32