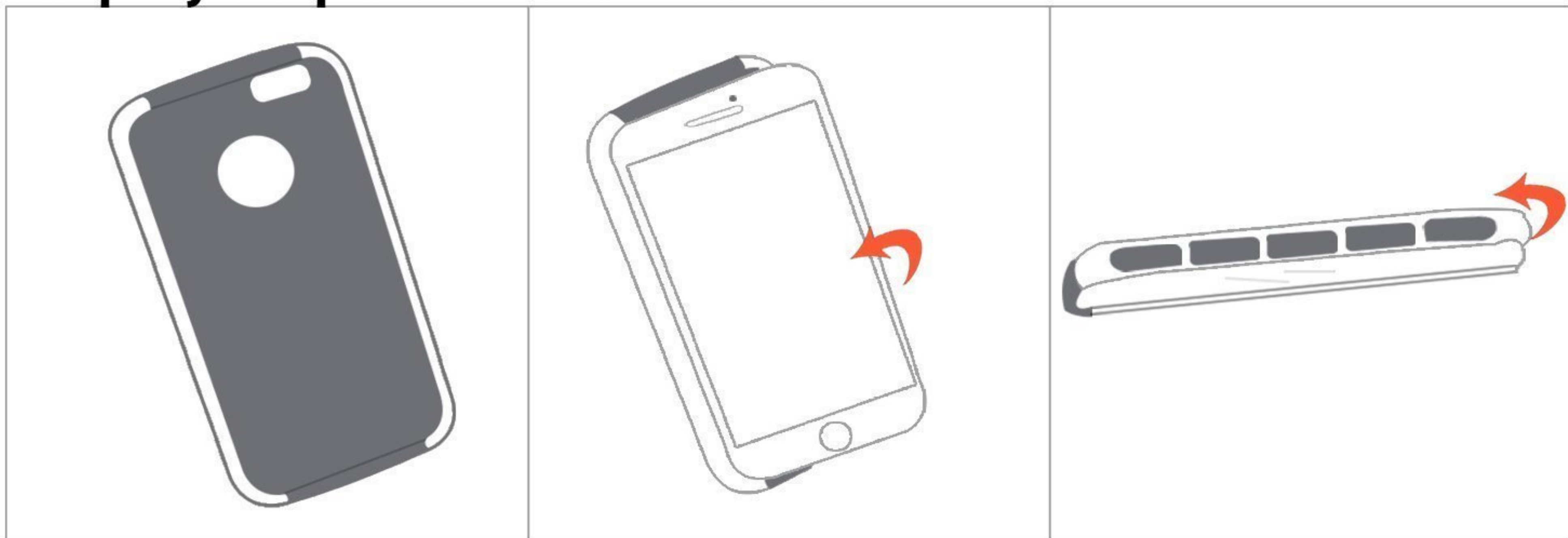


## Step by step install instructions

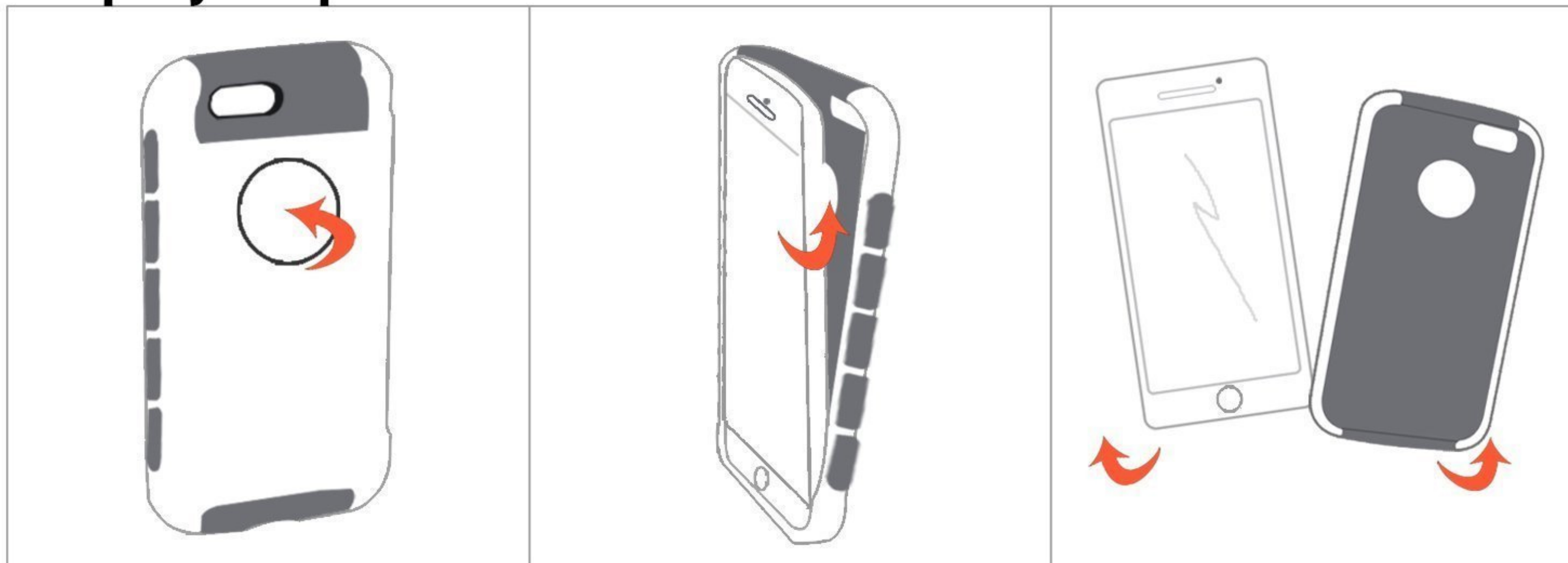


**1** Make sure all the TPU and PC are align correctly

**2** Insert your device to the phone case

**3** Make sure all buttons and case are correctly align

## Step by step uninstall instructions



**1** Hold the case, the other thumbs presses into the device by the logo hole

**2** After a corner out, then put the other corner out

**3** Uninstall your device from the case successfully