



Pour le manuel en français étendu allez à :



Per l'italiano esteso manuale vai a:



Das erweiterte deutsche Handbuch finden Sie unter:



Ga voor de uitgebreide Nederlandse handleiding naar:



Para el manual ampliado en español vaya a:



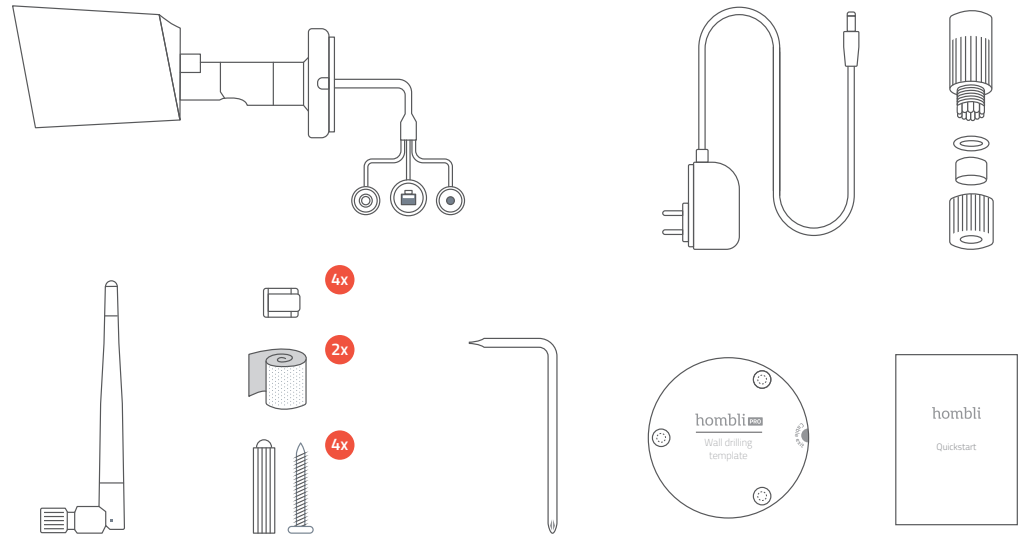
For the extended English manual go to:



[www.hombli.com/smart-outdoor-camera-instructions](http://www.hombli.com/smart-outdoor-camera-instructions)

### What's in the box

- 1x Smart Outdoor Camera
- 1x Power adapter
- 1x Cable sealing kit
- 1x Antenna
- 4x Cable clip
- 4x Plug & screw
- 2x Waterproof tape
- 1x Wall drilling template
- 1x Quickstart guide
- 1x Screwdriver

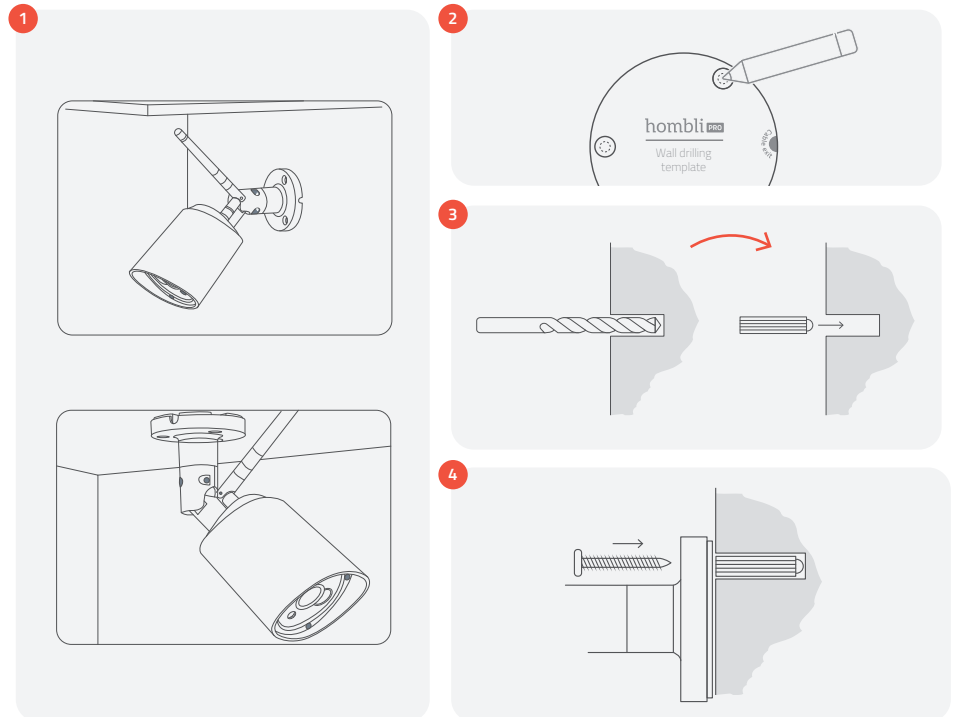


### Installation

Before installing, pair the camera and check the connection.

1. Choose a spot to install the Hombli Smart Outdoor Camera (wall, ceiling etc.).
2. Once you've chosen a spot, take the wall drilling template and mark the holes.
3. Drill three holes (using a 6mm drill bit). Insert the provided plugs into the holes.  
*Note: Skip this step when installing on a wooden surface.*
4. Now use the three provided screws to secure the Hombli Smart Outdoor Camera in its place.

*Note: It's also possible to feed the wires through the wall directly behind the camera. An additional hole is required for this option!*



### Waterproof guide

1. Place the red O-ring over the RJ45 Ethernet connector before tightening all the components
2. Use the provided waterproof tape to seal the connecting parts.
3. Repeat this process also for the power connector.

