



## Handleiding voor de Regendouches

Bedankt dat u voor de hoogwaardige Luzzo-regendouche hebt gekozen.

Controleer na het openen van de verpakking of alle onderdelen onbeschadigd zijn en of alle onderdelen in de doos zitten, zie onderstaande afbeelding.

Als er iets niet goed is neem dan contact op met de verkoper.

### BELANGRIJKE INSTRUCTIES:

- A. De kraan in de fabriek getest en afgesteld. Haal hem niet uit onnodig elkaar en laat hem door een bevoegd persoon installeren.
- B. Spoel de leidingen voor het installeren door om eventueel bouwvuil te verwijderen.
- C. Controleer de afdichting van elke verbinding om er zeker van te zijn dat er geen lekkage is.
- D. De kraan functioneert met een werkdruk van 0,5-10 bar en met een watertemperatuur tussen 4-90 graden, sluit de koude en warme kant correct aan.
- E. De kraan heeft een fabrieksgarantie van 3 jaar op productie fouten met uitzondering van misbruik en abnormaal gebruik.

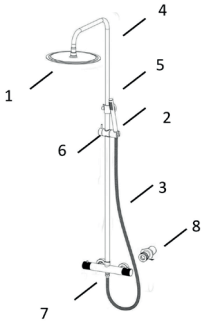
### REINIGING EN ONDERHOUD

- Maak de kraan na gebruik droog met een zachte doek om kalkvorming te voorkomen.
- Maak de kraan schoon met water en een zachte doek.
- De beluchter kan tijdens gebruik vuil worden, je kunt hem losdraaien om schoon te maken.



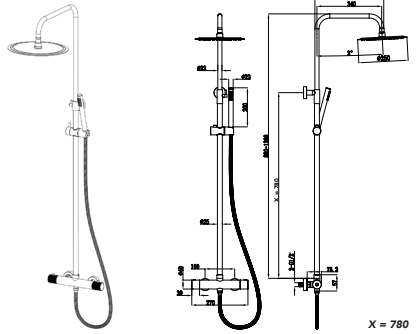
*Bij de installatie heeft u een schroevendraaier, een verstelbare sleutel en een verstelbare tang nodig.*

# 1. ONDERDELENLIJST

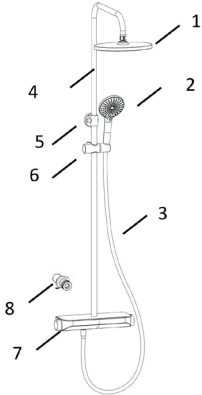


Art. nr: 3000652

- |                         |   |
|-------------------------|---|
| 1. Hoofddouche          | 1 |
| 2. Handdouche           | 1 |
| 3. Doucheslang          | 1 |
| 4. Telescopische buis   | 1 |
| 5. Wandhouder           | 1 |
| 6. Handdouche houder    | 1 |
| 7. Kraanhuis            | 1 |
| 8. Aansluit koppelingen | 2 |

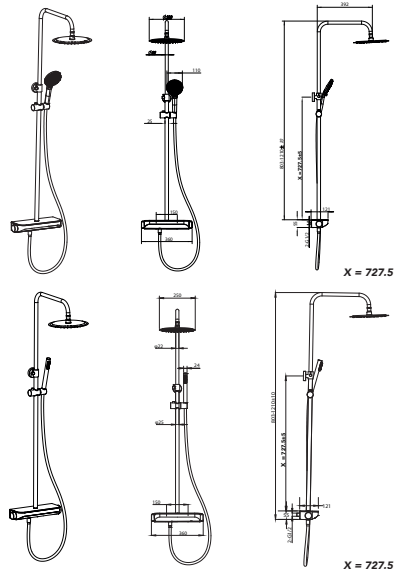


X = 770



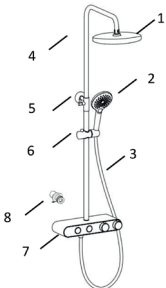
Art. nr: 3000653  
3000654 / 3000655

- |                         |   |
|-------------------------|---|
| 1. Hoofddouche          | 1 |
| 2. Handdouche           | 1 |
| 3. Doucheslang          | 1 |
| 4. Telescopische buis   | 1 |
| 5. Wandhouder           | 1 |
| 6. Handdouche houder    | 1 |
| 7. Kraanhuis            | 1 |
| 8. Aansluit koppelingen | 2 |



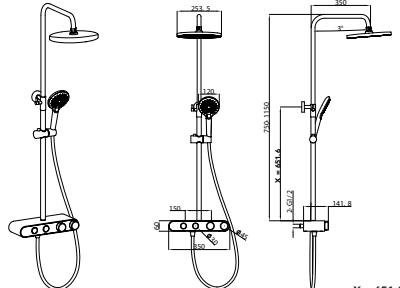
X = 727.5

X = 727.5



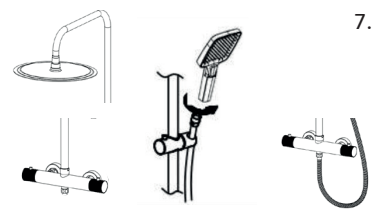
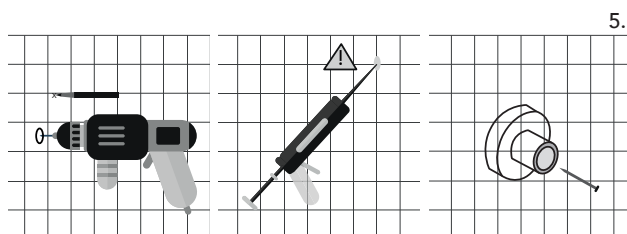
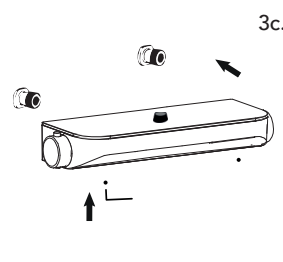
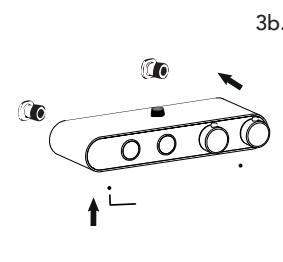
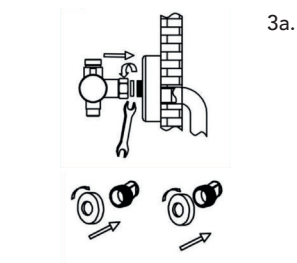
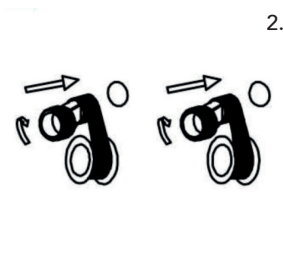
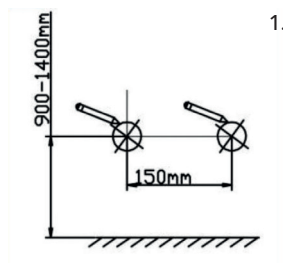
Art. nr: 3000656

- |                         |   |
|-------------------------|---|
| 1. Hoofddouche          | 1 |
| 2. Handdouche           | 1 |
| 3. Doucheslang          | 1 |
| 4. Telescopische buis   | 1 |
| 5. Wandhouder           | 1 |
| 6. Handdouche houder    | 1 |
| 7. Kraanhuis            | 1 |
| 8. Aansluit koppelingen | 2 |



X = 651.6

## 2. INSTRUCTIE



Let op: Controleer op lekken door gedurende 1 minuut water te laten stromen.  
Draai indien nodig opnieuw vast.

# LUZZO

## Manuel pour les douches à effet de pluie

Merci d'avoir choisi la douche à effet pluie Luzzo de haute qualité.

Après avoir ouvert l'emballage, vérifiez que toutes les pièces ne sont pas endommagées et que toutes les pièces sont dans la boîte, voir l'image ci-dessous.

Si quelque chose ne va pas, veuillez contacter le vendeur.

### INSTRUCTIONS IMPORTANTES:

- A. Le robinet a été testé et réglé en usine. Ne le démontez pas inutilement et faites-le installer par une personne qualifiée.
- B. Rincer les tuyaux avant l'installation pour éliminer tout débris de construction.
- C. Vérifiez l'étanchéité de chaque connexion pour vous assurer qu'il n'y a pas de fuite.
- D. Le robinet fonctionne avec une pression de service de 0,5 à 10 bars et avec une température de l'eau comprise entre 4 et 90 degrés, connectez correctement les côtés froid et chaud.
- E. Le robinet bénéficie d'une garantie constructeur de 3 ans contre les défauts de fabrication à l'exception des abus et des utilisations anormales.

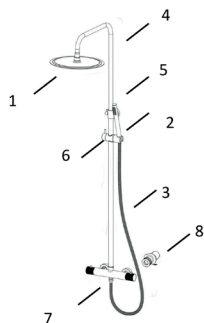
### NETTOYAGE ET ENTRETIEN

- Séchez le robinet avec un chiffon doux après utilisation pour éviter la formation de calcaire.
- Nettoyez le robinet avec de l'eau et un chiffon doux.
- L'aérateur peut se salir lors de son utilisation, vous pouvez le dévisser pour le nettoyer.



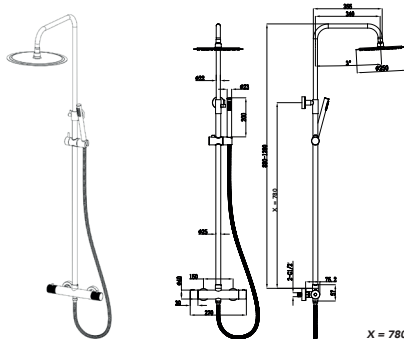
*L'installation nécessite un tournevis, une clé à molette et une pince à molette.*

# 1. LISTE DES PIÈCES

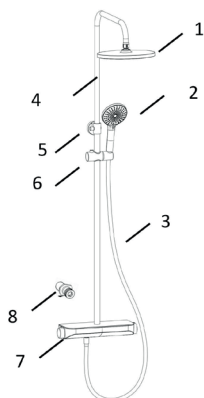


Número d'article: 3000652

- |                                |   |
|--------------------------------|---|
| 1. Douche de tête              | 1 |
| 2. Douchette à main            | 1 |
| 3. Flexible de douche          | 1 |
| 4. Tube télescopique           | 1 |
| 5. Support mural               | 1 |
| 6. Support de douchette à main | 1 |
| 7. Corps de robinet            | 1 |
| 8. Traccords de connexion      | 2 |

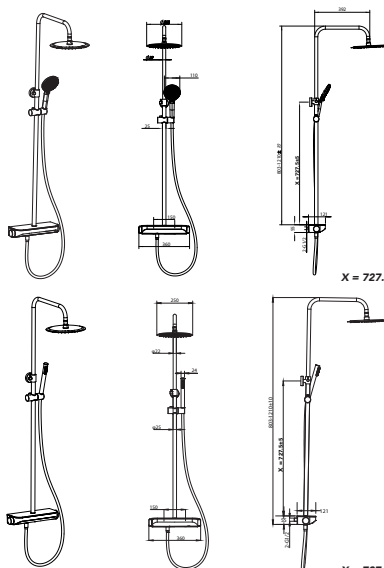


X = 780



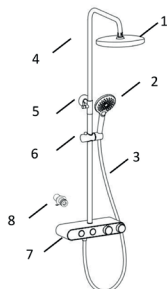
Número d'article: 3000653  
3000654 / 3000655

- |                                |   |
|--------------------------------|---|
| 1. Douche de tête              | 1 |
| 2. Douchette à main            | 1 |
| 3. Flexible de douche          | 1 |
| 4. Tube télescopique           | 1 |
| 5. Support mural               | 1 |
| 6. Support de douchette à main | 1 |
| 7. Corps de robinet            | 1 |
| 8. Traccords de connexion      | 2 |



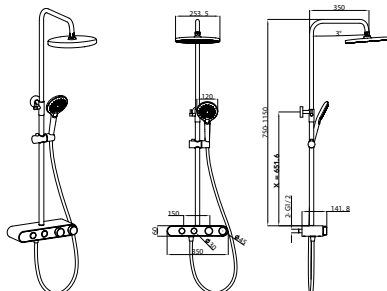
X = 727.5

X = 727.5



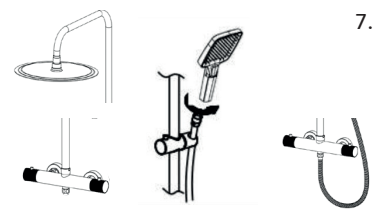
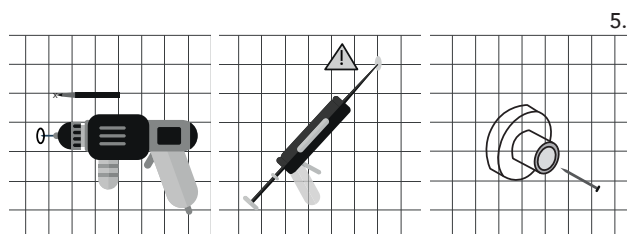
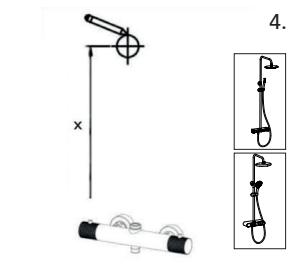
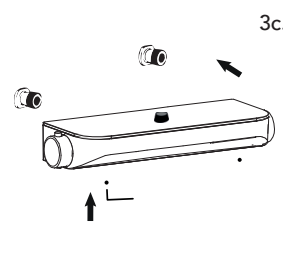
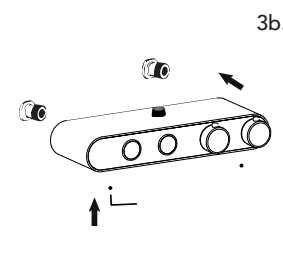
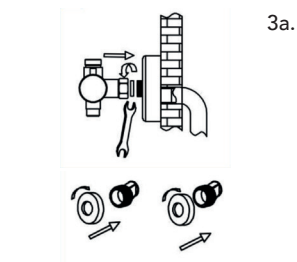
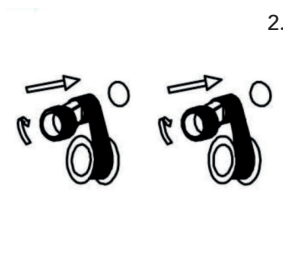
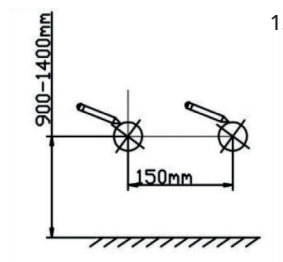
Número d'article: 3000656

- |                                |   |
|--------------------------------|---|
| 1. Douche de tête              | 1 |
| 2. Douchette à main            | 1 |
| 3. Flexible de douche          | 1 |
| 4. Tube télescopique           | 1 |
| 5. Support mural               | 1 |
| 6. Support de douchette à main | 1 |
| 7. Corps de robinet            | 1 |
| 8. Traccords de connexion      | 2 |



X = 651.6

## 2. INSTRUCTIONS



Remarque: Vérifiez les fuites en faisant couler de l'eau pendant 1 minute. Resserrez si nécessaire.



## Manual for the rain shower

Thank you for choosing the high-quality Luzzo rain shower.

After opening the package, check that all parts are undamaged and that all parts are in the box, see image below.

If something is not right, please contact the seller.

### IMPORTANT INSTRUCTIONS:

- A. The tap has been tested and adjusted at the factory. Do not disassemble it unnecessarily and have it installed by a qualified person.
- B. Flush the pipes before installation to remove any construction debris.
- C. Check the seal of each connection to ensure there is no leakage.
- D. The tap functions with a working pressure of 0.5-10 bar and with a water temperature between 4-90 degrees, connect the cold and hot side correctly.
- E. The tap has a 3-year manufacturer's warranty against manufacturing defects with the exception of abuse and abnormal use.

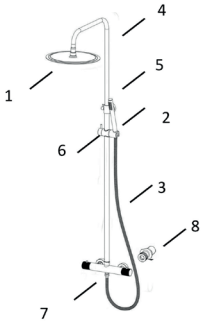
### CLEANING AND MAINTENANCE

- Dry the tap with a soft cloth after use to prevent limescale formation.
- Clean the tap with water and a soft cloth.
- The aerator can become dirty during use, you can unscrew it for cleaning.



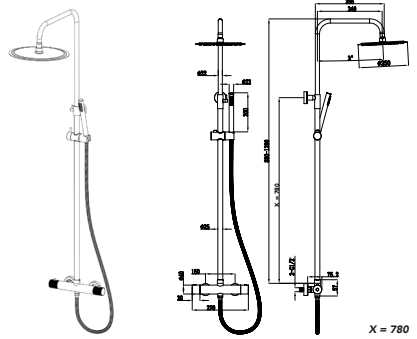
*Installation requires a screwdriver, an adjustable wrench and adjustable pliers.*

# 1. PARTS LIST

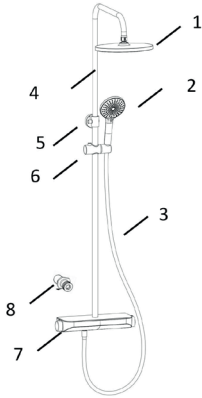


Article no: 3000652

- |                         |   |
|-------------------------|---|
| 1. Overhead head        | 1 |
| 2. Hand shower          | 1 |
| 3. Shower hose          | 1 |
| 4. Telescopic tube      | 1 |
| 5. Wall holder          | 1 |
| 6. Hand shower holder   | 1 |
| 7. Tap housing          | 1 |
| 8. Connection couplings | 2 |

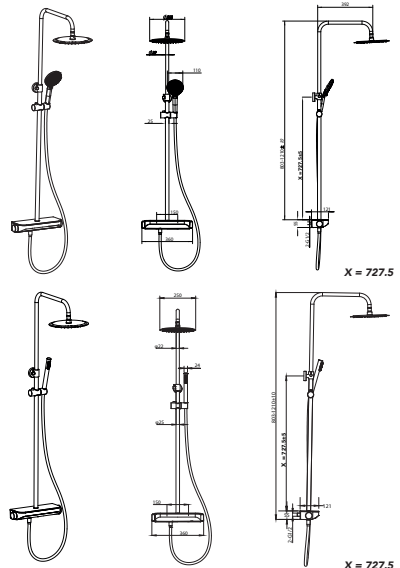


X = 780



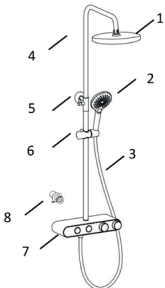
Article no: 3000653  
3000654 / 3000655

- |                         |   |
|-------------------------|---|
| 1. Overhead head        | 1 |
| 2. Hand shower          | 1 |
| 3. Shower hose          | 1 |
| 4. Telescopic tube      | 1 |
| 5. Wall holder          | 1 |
| 6. Hand shower holder   | 1 |
| 7. Tap housing          | 1 |
| 8. Connection couplings | 2 |



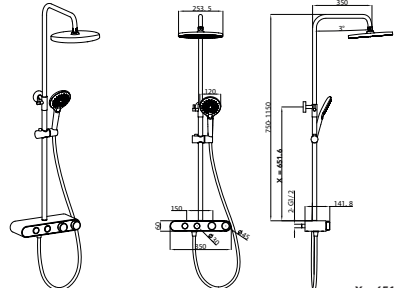
X = 727.5

X = 727.5



Article no: 3000656

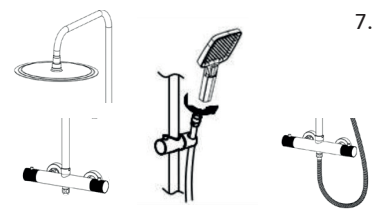
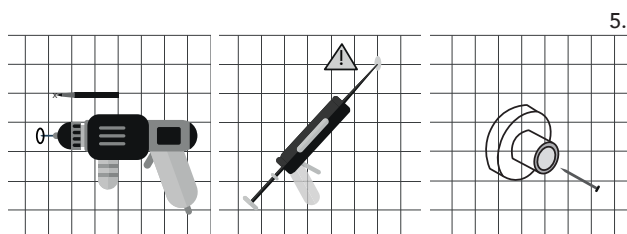
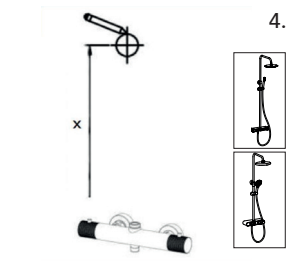
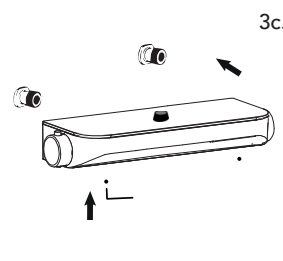
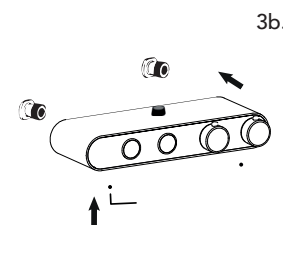
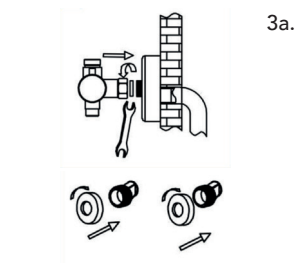
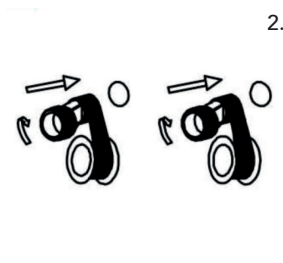
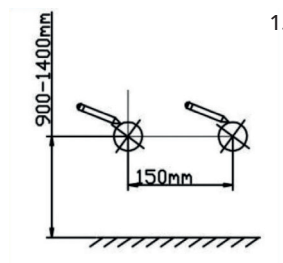
- |                         |   |
|-------------------------|---|
| 1. Overhead head        | 1 |
| 2. Hand shower          | 1 |
| 3. Shower hose          | 1 |
| 4. Telescopic tube      | 1 |
| 5. Wall holder          | 1 |
| 6. Hand shower holder   | 1 |
| 7. Tap housing          | 1 |
| 8. Connection couplings | 2 |



X = 651.6



## 2. INSTRUCTION



Note: Check for leaks by running water for 1 minute. Retighten if necessary.



## Handbuch für die Regendusche

Vielen Dank, dass Sie sich für die hochwertige Regendusche von Luzzo entschieden haben.

Überprüfen Sie nach dem Öffnen der Verpackung, ob alle Teile unbeschädigt sind und sich alle Teile im Karton befinden, siehe Abbildung unten.

Wenn etwas nicht stimmt, wenden Sie sich bitte an den Verkäufer.

### WICHTIGE HINWEISE:

- A. Der Wasserhahn wurde im Werk getestet und eingestellt. Zerlegen Sie es nicht unnötig und lassen Sie es von einer qualifizierten Person installieren.
- B. Spülen Sie die Rohre vor der Installation, um eventuelle Bauschutt zu entfernen.
- C. Überprüfen Sie die Dichtung jedes Anschlusses, um sicherzustellen, dass keine Lecks vorhanden sind.
- D. Der Wasserhahn funktioniert bei einem Arbeitsdruck von 0,5–10 bar und bei einer Wassertemperatur zwischen 4–90 Grad. Schließen Sie die Kalt- und Warmseite richtig an.
- E. Für den Wasserhahn gilt eine Herstellergarantie von 3 Jahren gegen Herstellungsfehler, mit Ausnahme von Missbrauch und unsachgemäßem Gebrauch.

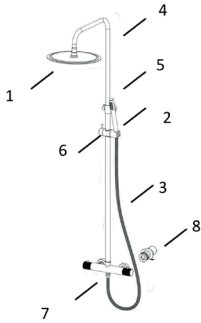
### REINIGUNG UND INSTANDHALTUNG

- Trocknen Sie den Wasserhahn nach Gebrauch mit einem weichen Tuch ab, um Kalkablagerungen vorzubeugen.
- Reinigen Sie den Wasserhahn mit Wasser und einem weichen Tuch.
- Der Luftsprudler kann während des Gebrauchs verschmutzen, Sie können ihn zum Reinigen abschrauben.



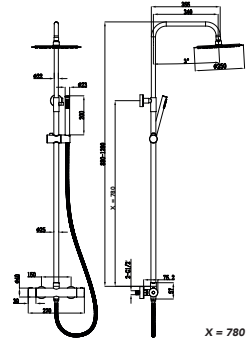
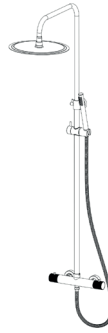
*Für die Installation sind ein Schraubendreher, ein verstellbarer Schraubenschlüssel und eine verstellbare Zange erforderlich.*

# 1. TEILELISTE

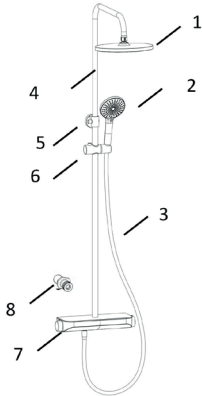


Art. nr: 3000652

- |                        |   |
|------------------------|---|
| 1. Kopfbrause          | 1 |
| 2. Handbrause          | 1 |
| 3. Brauseschlauch      | 1 |
| 4. Teleskoprohr        | 1 |
| 5. Wandhalter          | 1 |
| 6. Handbrausehalter    | 1 |
| 7. Hahngehäuse         | 1 |
| 8. Anschlusskupplungen | 2 |

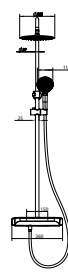


X = 780

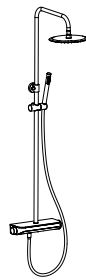


Art. nr: 3000653  
3000654 / 3000655

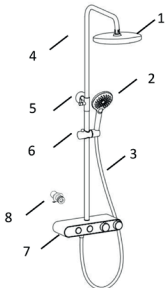
- |                        |   |
|------------------------|---|
| 1. Kopfbrause          | 1 |
| 2. Handbrause          | 1 |
| 3. Brauseschlauch      | 1 |
| 4. Teleskoprohr        | 1 |
| 5. Wandhalter          | 1 |
| 6. Handbrausehalter    | 1 |
| 7. Hahngehäuse         | 1 |
| 8. Anschlusskupplungen | 2 |



X = 727.5

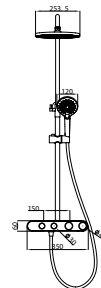
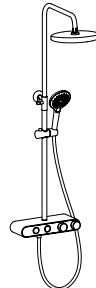


X = 727.5



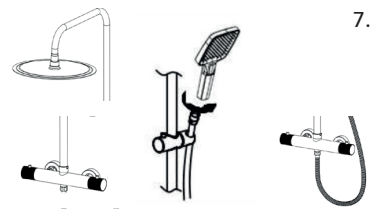
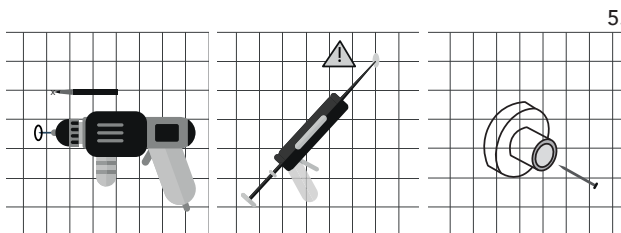
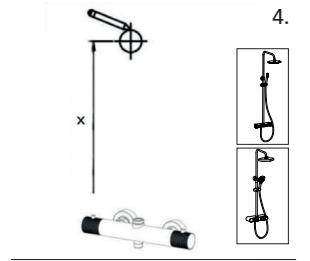
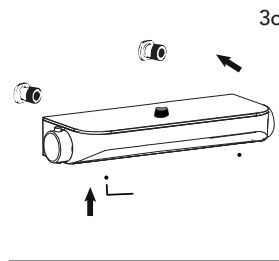
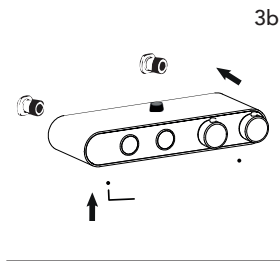
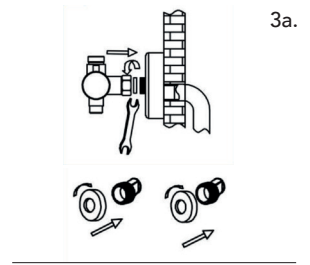
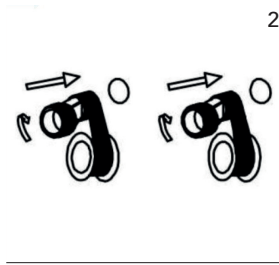
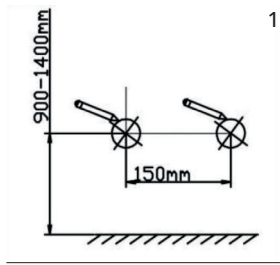
Art. nr: 3000656

- |                        |   |
|------------------------|---|
| 1. Kopfbrause          | 1 |
| 2. Handbrause          | 1 |
| 3. Brauseschlauch      | 1 |
| 4. Teleskoprohr        | 1 |
| 5. Wandhalter          | 1 |
| 6. Handbrausehalter    | 1 |
| 7. Hahngehäuse         | 1 |
| 8. Anschlusskupplungen | 2 |



X = 651.6

## 2. ANLEITUNG



**Hinweis:** Überprüfen Sie das Gerät auf Undichtigkeiten, indem Sie 1 Minute lang Wasser laufen lassen. Bei Bedarf nachziehen.