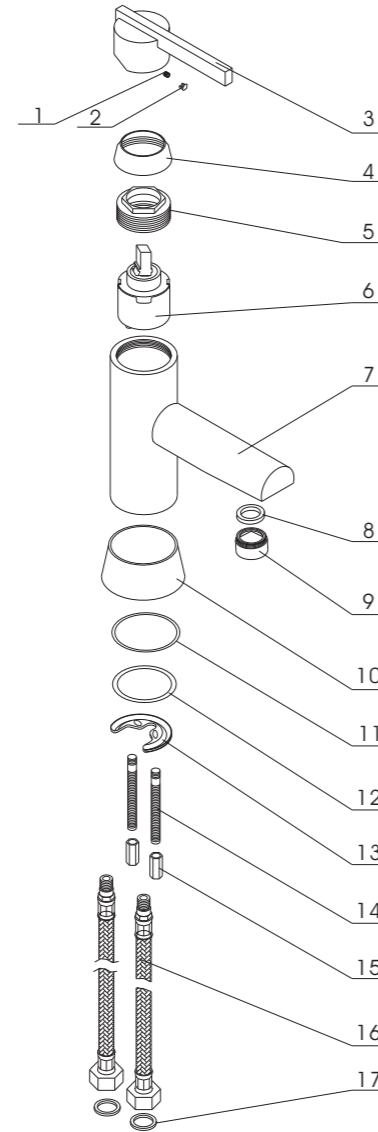


Washbasin Mixer

Instruction Guide

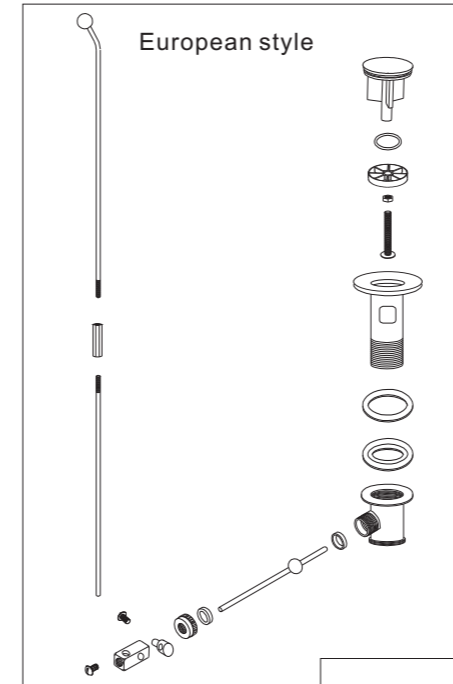
Service Parts



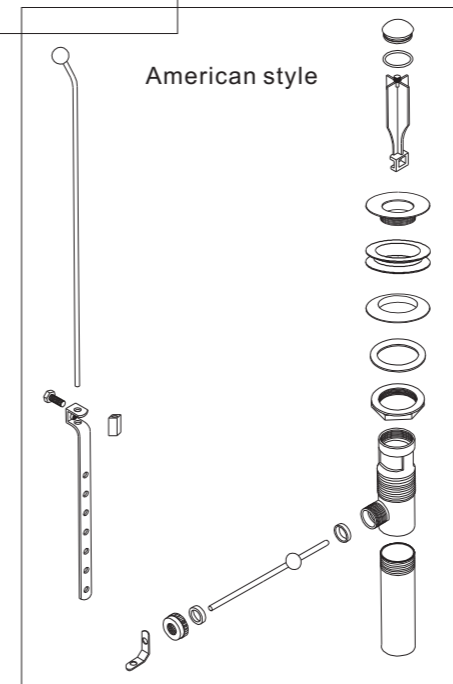
No.	Description	Material
1	SET SCREW	STAINLESS STEEL
2	PLUG BUTTON	PLASTIC
3	LEVER	BRASS
4	CAP	BRASS
5	BONNET	BRASS
6	CARTRIDGE	MULRIPE MATERIAL
7	BODY	BRASS
8	WASHER	RUBBER
9	AERATOR	MULRIPE MATERIAL
10	BASE RING	BRASS
11	O RING	RUBBER
12	O RING	RUBBER
13	DECK PLATE	STAINLESS STEEL
14	MOUNTING STUD	IRON
15	MOUNTING NUT	BRASS
16	INLET FLEXIBLE HOSE	
17	WASHER	RUBBER

IGMX03ENR4 (10/2006)

Pop Up Set



European style



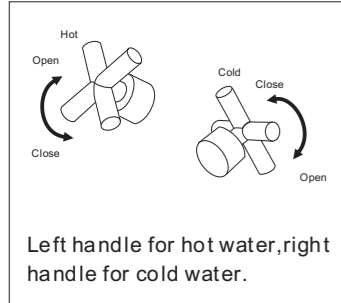
American style

IGMX03ENR4 (10/2006)

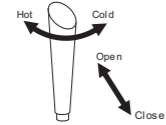
IGMX03ENR4 (10/2006)

Instruction

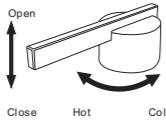
Handle Operation



Left handle for hot water, right handle for cold water.



Lift the handle gently for open.



Turn lever around to adjust water temperature.

Cleaning Method

In order to maintain the shine finish of your mixer, please always clean the mixer periodically.

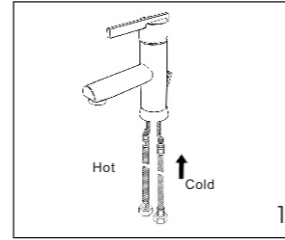
- Clean the finish with warm water and dry with a clean soft cloth.
- Many cleaners may contain chemicals, which could adversely affect the finish and are not recommended for cleaning.
- Do not use abrasive cleaners, solvents, sponges and tissues for cleaning.

IGMX03ENR4 (10/2006)

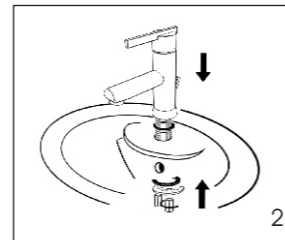
Installation Method

Caution Before installation, clean out dirt or other impurities, which may collect in water pipes by allowing water to flow freely for a moment.

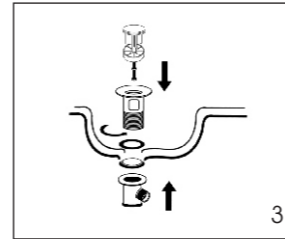
1. Install inlet flexible hose and mounting stud into the mixer body base, and then tighten it.



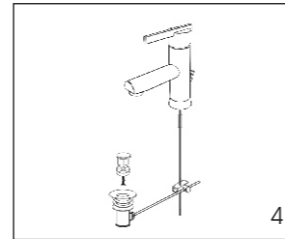
2. Insert the inlet flexible hose into the basin hole. Position the mixer. From underside of the basin, fit the deck plate on the mounting stud, and secure the mixer with the nut.



3. Take away the drain plug protector; install the pop-up set into the drain opening and tighten the mounting nut.



4. Connect the lift rod, pop-up set and installed mixer body by pivot rod.



IGMX03ENR4 (10/2006)

Terms and Conditions

On the mixer you purchased you have a 5 years guarantee on the ceramic disk from the date of purchase. The guarantee does not cover:

1. Incorrect or inappropriate use of the mixer.
2. Incorrect installation or carried out with inappropriate tools.
3. Inappropriate maintenance or inappropriate use of cleaning products.
4. Components subject to ordinary wear and tear.
5. Damages due to calcareous sediments or plaster flakes in the pipes.
6. Damages due to the use of spare parts other than the original ones.
7. Causes due to chemical, electrochemical, electrical influences.

Customer must present the sales invoice and this instruction guide in order to enjoy our guarantee service. Please keep your sales invoice and instruction guide safely.

Your dealer will apply for the enforcement of the guarantee. Your dealer reserves the right to amend the term and conditions without prior notice. In case of any dispute, your dealer will reserve the right of final decision.

IGMX03ENR4 (10/2006)