

Specification

Pull-out Kitchen Faucet

Description:

- 304 stainless steel pull-out kitchen faucet
- Flexible hoses supply with size 3/8
- Ceramic cartridge

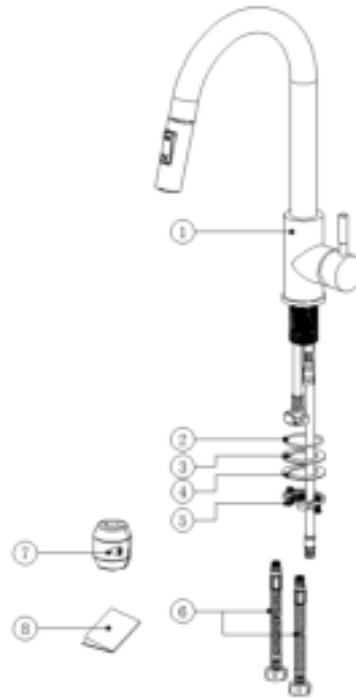


Notes before installation:

1. Please check that all components are present
2. Before installation ensure that all feed lines are clear of debris and on/off valve is present.
3. If you will be away from home for an extended period you should shut off the main water supply
4. Installation manual tools you will need: adjustable wrench, hexagon wrench, philips screwdriver.

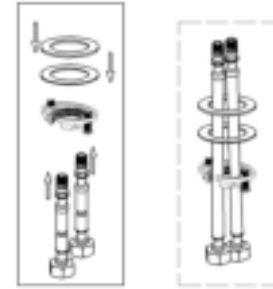
Component parts list

No.	Part name	QTY	Material
1	Faucet	1	304 sus
2&3	O-ring	2	rubber
4	Fixer component	1	304 sus
5	Faucet nut	1	304 sus
6	Flexible hoses	2	304 sus
7	Gravity ball	1	Plastic
8	Instruction paper	1	Paper

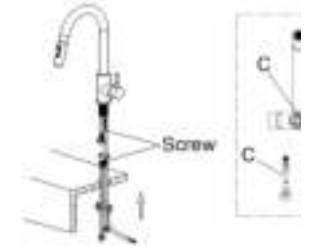


Installation Way

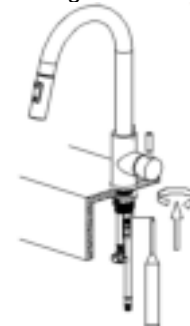
1. Put the flexible hoses through the fixer components.



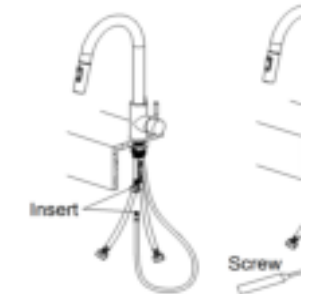
2. Put the flexible hoses (with the comp sink bottom, put the s/s tube through above the sink bottom, screw the hose into it make sure the red hose to H, blue hose to C).



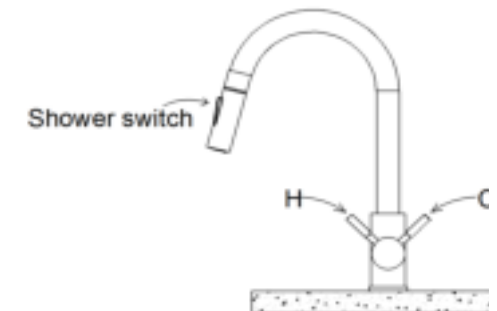
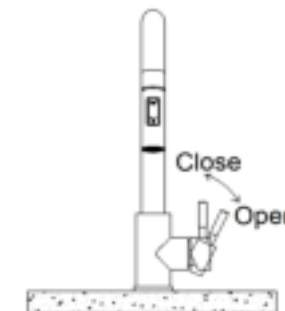
3. Put faucet nut into faucet leg and lock it. Tighten up the cap screw by screwdriver to make the fixture strong.



4. Connect the water hose to hot and cold line, and put the gravity ball on EPX hose.



5. Open the faucet, double check for any leakage, and make sure the faucet can work as cold water can control well when open handle.



Notice: this faucet is designed to be installed thru 1 hole $\Phi 1\text{-}3/8''$ ($\Phi 35\text{mm}$) min

ponents) through the
into the water hose
the main faucet,
use to C. Don't



cold water supply
use.



normal. Hot and

3

2