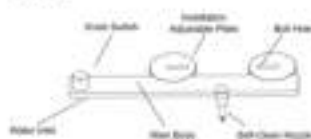


FRESHOLE[®] BIDET NB200A USER MANUAL

Thank you for using NAY/SHIM products

1. Part List



(1) Power Switch Indicator



(2) Accessories



2. Specification



3. Application Scope

- ① With standard toilet seat Size A: 105mm-115mm
Size B: 175mm
- ② With bidet/standard toilet seat Size A: 135mm-145mm
Size B: 185mm



4. Installation

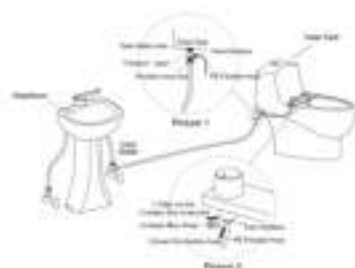
(1) Preparation

- A. Turn off the water valve.
- B. Flush the toilet to drain water completely.
- C. Turn off the toilet seat cover.

- D. Double-check the water level from the water valve seat.

(2) Installation method

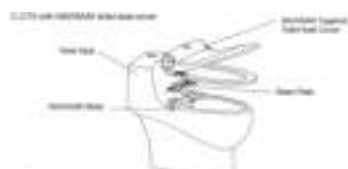
- A. Insert T-shaped cap to the water valve seat. (Figure 1)
- B. Use Tube to connect the T-shaped cap with bidet water inlet. (Figure 2)



Caution: Do not adjust the water level and flow direction from the bidet water valve.

5. Install the bidet nozzle

- A. Fix the bidet nozzle to the bidet seat.



6. Description



7. Trouble Shooting



If nozzle could be stopped, just move nozzle up and down for several times by hand.