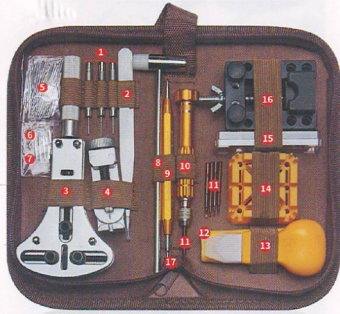


**VALEDORO**

149 pcs Watch Repair Tool Kit



Tool Kit Use & Instrustions

- 1 -

OpenThe Back Case



Choose The Right Tooth

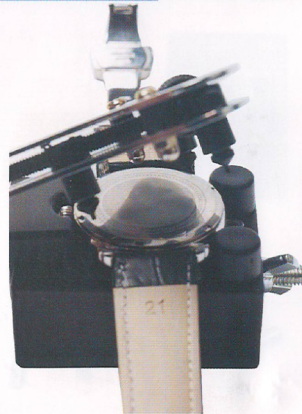
- 3 -

Package Included:

- 1 3\*Pin Pushers(0.8mm,0.9mm,1.0mm)
- 2 1\*Stainless Steel Tweezers
- 3 1\*Adjustable Case Opener
- 4 1\*Watch Band Pins Remover
- 5 108\*Spring bar
- 6 3\*Watch Pin Remover Spare Pins(golden)
- 7 2\*Spring Bar Tool Spare Tips
- 8 1\*Hammer
- 9 1\*Spring Bar Tool
- 10 1\*5-in 1 Screwdriver
- 11 5\*Screwdriver tip
- 12 1\*Cleaning Cloth
- 13 1\*Watch Back Pry Opener
- 14 1\*Watch Band Holder
- 15 18\*Adjustable Case Opener Pins
- 16 1\*Watch Case Holder

- 2 -

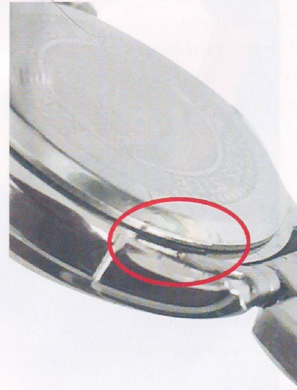
OpenThe Back Case



Turn And Unscrew The Back Cover With Case Holder

- 4 -

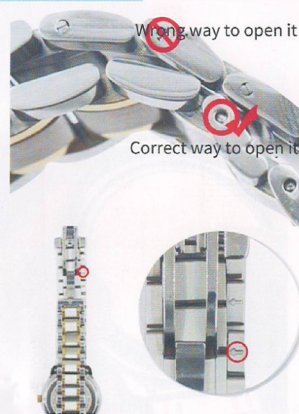
OpenThe Back Case



Look At The Back Of The Watch. Look Around The Rim, You Will See A Little Lip Sticking Up Like The One In The Photo...

- 5 -

Adjust The Band Length



Operate In The Right Direction

- 7 -

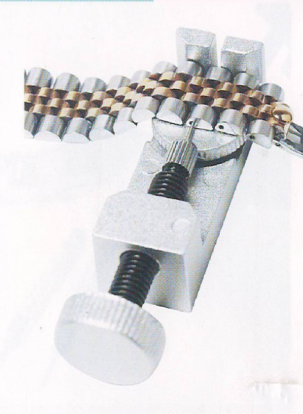
OpenThe Back Case



Pry Up The Back Case

- 6 -

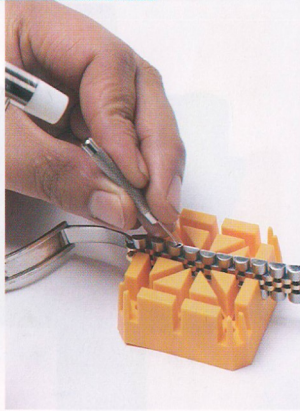
Adjust The Band Length



Use Wstch Band Remover To Rotate And Take it out

- 8 -

Adjust The Band Length



Lay Up The Watch Band On The Holder, Then Use Punch Pins With Hammer

- 9 -

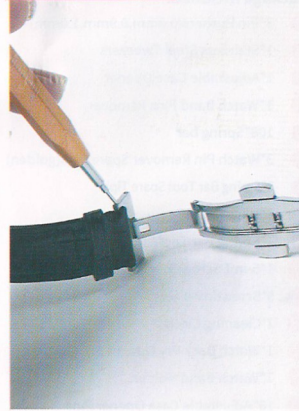
Replace The Strap



The Scale Spring Bar Tool is Used To Measure Length

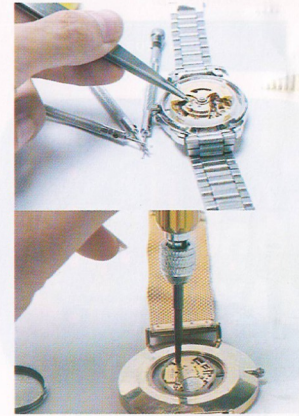
- 10 -

Replace The Strap



Replace The Strap With Spring Bar Tool

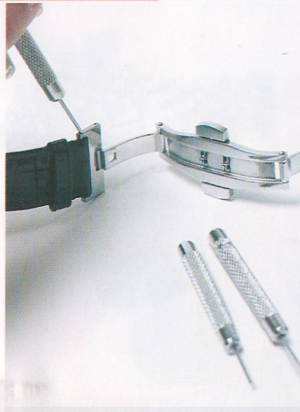
- 13 -



Tweezers Is Used To Pinch Small Parts  
Non-Magnetic Screwdriver Is Used To Remove  
The Watch Strap And Mechanical Movement

- 14 -

Replace The Strap



Push Out The Spring Shaft

- 11 -

Replace The Strap



Push Out the Spring Shaft Through The Slit

- 12 -

The Tools Accessories



Tip of spring bar tool\*2    Cleaning cloth\*1  
Spring Bar\*108    Watch Pin Remover Spare Pins\*3

- 15 -

Thank you very much for using

Watch Repair Tool Kit.

The Instruction Shows How To Operate This Product.

Please Read Carefully Before Using In

Order To Get Correct Usage

These Pictures Only Supply The Reference

Please Take The Actual Product As The Standard.

- 16 -