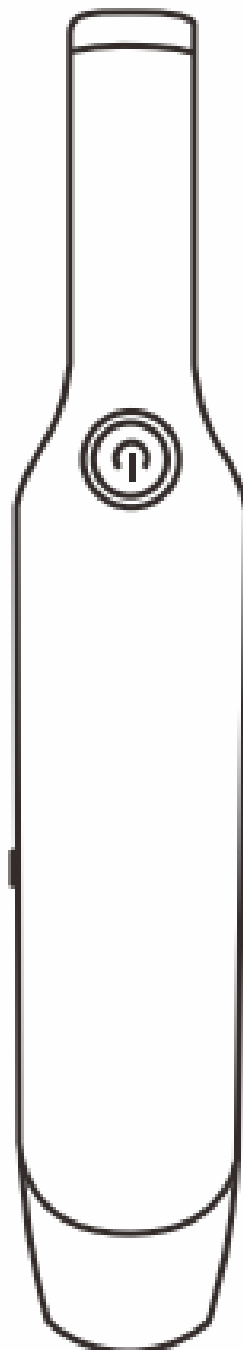


VEHICLE VACUUM CLEANER

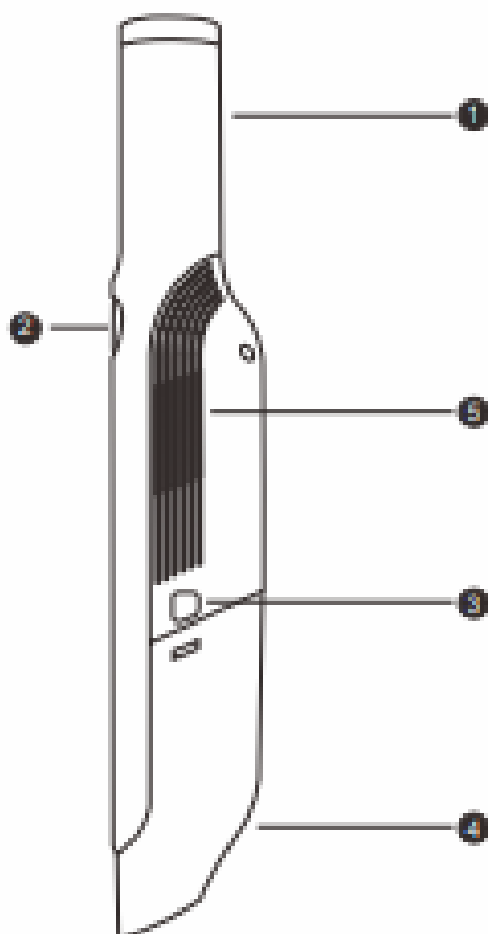
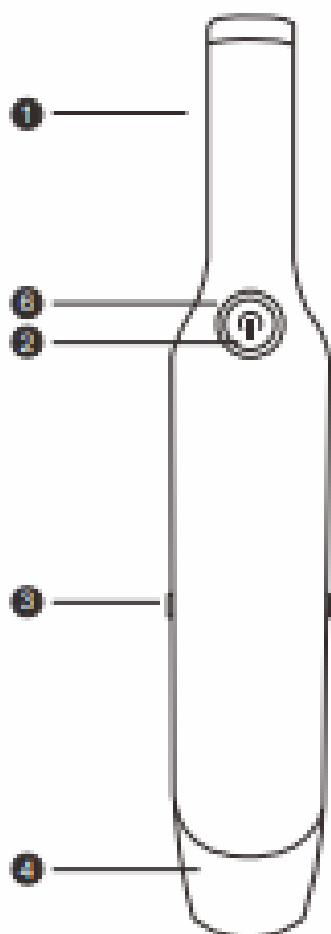
Instruction Manual

Thanks for choosing Techar! Read the manual carefully for correct and safe operation of the product. Always follow these instructions for safe usage.



Techar

Product Description:



- ① Handle
- ③ Dust Bin Switch
- ⑤ Air Outlet

- ② Start Switch
- ④ Dust Bin
- ⑥ Battery Indicator Light

Accessories



Charging cord

**(Rechargeable type:USB) cord
Vehicle-mounted type:cord with cigarette lighter)*



Functional gas
nozzles

Product Parameters:

| | Rechargeable | Vehicle-mounted |
|--------------------------|--------------|-----------------|
| Working Voltage: | 11.1V/7.4V | DC 12V |
| Line length | | 4.5M |
| Discharge Time: | 20min | |
| Battery Capacity: | 2000mAh | |



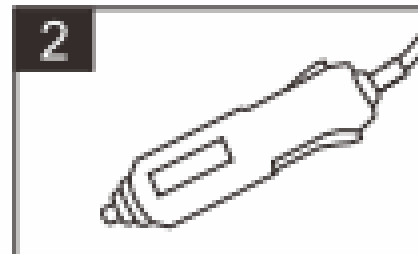
Warning:

1. It is forbidden to immerse it in water or other liquids;
2. To avoid fire, explosion, or injury, please check the vacuum cleaner and power cord before use. Prohibite to use a damaged vacuum cleaner or power cord;
3. Do not touch the power cord or vacuum cleaner with wet hands;
4. It is forbidden to leave the activated vacuum cleaner unattended;
5. Keep the vacuum cleaner or power cord away from the heated surface;
6. Do not yank the power cord or pull it out of the socket;
7. It is forbidden to cover the air inlet or outlet when using;
8. It is forbidden to inhale combustion materials, such as cigarette ends in combustion;
9. Children are forbidden to operate the vacuum cleaner or play it as toy .
Please take care when the Children are near the running electric appliances;
10. Do not use adapters above 2A for charging;
11. When the dust in the dust collection bin exceeds 50%, please clean it up in time. Otherwise, it will affect the normal use of the machine.

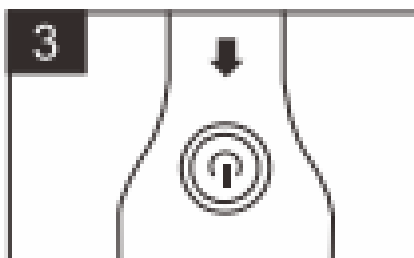
Usage Method :



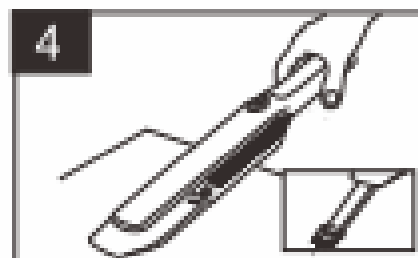
Start the car



Put the power cord into cigarette lighter socket



Press the Start Switch.
(Rechargeable version: Long press the power switch to wake up the vacuum cleaner)

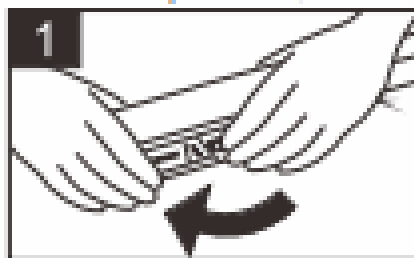


Align the suction port of the running machine to the surface of the object to be cleaned, and change different accessories according to different occasions.

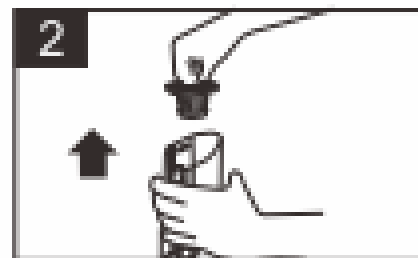
*For rechargeable vacuum cleaner ,please ignore the step 1 and step 2. Start from step 3 after fully charged.

Cleaning and Maintenance:

Please clean up in time, otherwise it will affect the normal use of the machine.



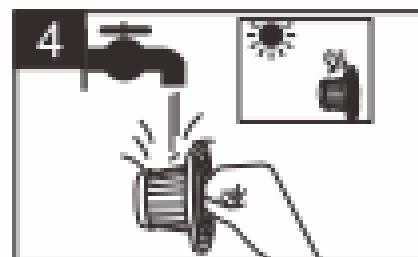
Press the dust bin switch and take off the dust bin.



According to the direction of picture shown, hold the dust bin and take out the filter.



Pour out the trash from the dust bin.

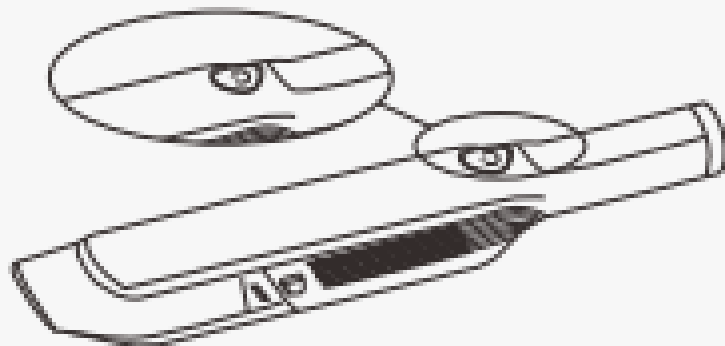


Wash the filter and dust bin, use it after drying.
Please make sure that the filter is completely air-dried.

Rechargeable

Two Gear Technology:

Two gear suction technology is adopted in vacuum cleaner. Press the power switch one time for regular suction.. It fits to clean debris, dust, etc. on flat surface. Press the power switch twice for enhanced suction.It is more suitable for cleaning the hair on carpets, dust or dust in hard-to-reach corners.



Battery Charging: Battery display status indication

In use



Blue indicator is always on

Low power



Red indicator flashing

Charging



Red indicator flashing

Charging Completed



Blue indicator on

FAQ:

Vacuum cleaner does not work

- **(Rechargeable)**The battery needs to be charged
- Hepa is blocked and needs cleaning

The vacuum cleaner cannot pick up debris or weak suction

- Too much dust in the dust collection bin, clean up in time
- **(Rechargeable)**Low electricity, need to be charged

Warranty Card:

| | | | |
|------------------|--|----------------|--|
| User Name | | Contact Number | |
| User Address | | | |
| Email | | | |
| Purchase Address | | Distributor | |

Warranty Notes:

1. This warranty card should be kept by the user properly for the warranty certificate. It will not be reissued if it is lost.
2. The warranty period is within three months from the date of purchase of the product. Product quality issues, users can use this card with the purchase invoice or copy of the invoice to contact our company or the local distributor, our company will be responsible for the "three guarantees."
3. Non-quality problems are not included in the "three guarantees".