



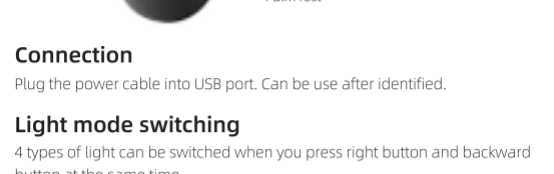
User Manual M618XSU

Thank you for choosing DELUX SEEKER, please read all instructions thoroughly before beginning the installation.

SYSTEM

Windows7/Windows8/Windows10/ MacOS

FUNCTIONS



Connection

Plug the power cable into USB port. Can be use after identified.

Light mode switching

4 types of light can be switched when you press right button and backward button at the same time.

DPI switching

Tap DPI button to switch the DPI.

800 (red light) -1200 (green light) -1600 (blue light) -2400 (purple light) -4000 (yellow light)

Switching DPI successfully when the corresponding light flashed twice.

Default DPI:1200(600-4000)

1.

Report rate

125Hz-250Hz-500Hz-1000Hz,
Default 500Hz, can be changed by the driver.

Thumb scroll wheel

Rolling up→Moving to the left
Rolling down→Moving to the right
(can be used in office software, browser, etc.)

Driver installation

1、Installation


Download from DELUX website: www.deluxworld.com

2、Setting

Opening the driver (when using the mouse) to set the functions.

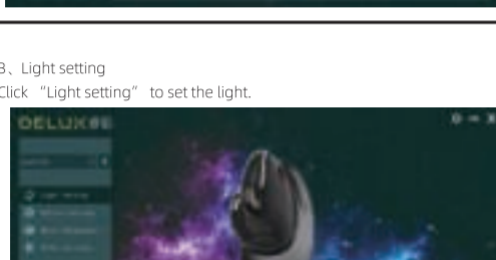
A、Multi-group file configuration

Click "+" on the top-left of the interface to create a new configuration file.

Click  The current configuration file can be deleted.

Click  The current configuration file can be copied.

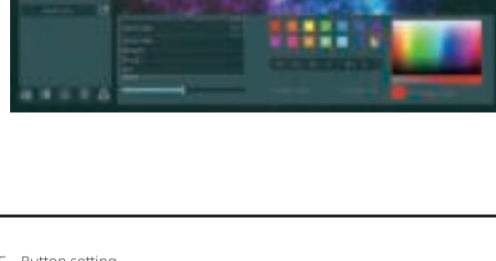
Click  The current configuration file can be renamed.



2.

B、Light setting

Click "Light setting" to set the light.



3.

C、Button setting

Click "Button settings" to set the buttons.

Click  after all settings done.



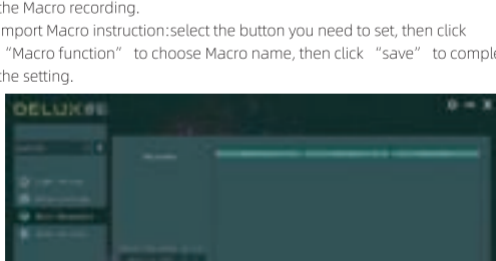
4.

D、Macro management

Click "Macro management" to set the Macro.

Click "+" to create a new Macro, then click "REC" to record. Entering the key that you need on the keyboard when recording. Click "STOP" to stop the recording.

Import Macro instruction:select the button you need to set, then click "Macro function" to choose Macro name, then click "save" to complete the setting.



5.



E、DPI setting

Click "Other settings" to set the DPI.

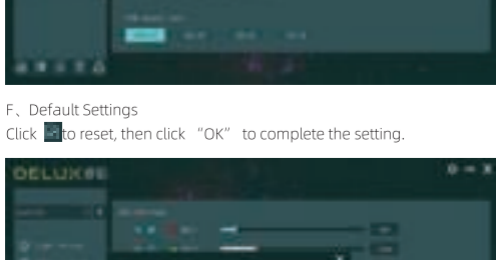


6.



F、Default Settings

Click  to reset, then click "OK" to complete the setting.



7.