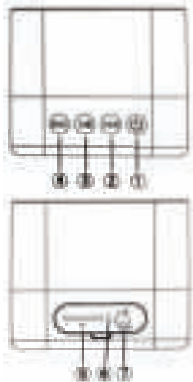
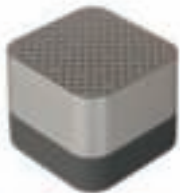


XARALYN®

Crackling Sound Effect Box Manual



Basic Functions

1. Long press: POWER ON/OFF
Short press: Switch Bluetooth/Aux/SD card
2. Long press: Volume ↑
Short press: next song
3. Play/Pause
4. Long press: Volume ↓
Short press: previous song
5. TF card socket
6. LED light
7. DC 5 V/USB charging and audio input port
8. Reset when pressing button 4 and button 2 at the same time

Product Features

- Bluetooth version: 4.0
- Built-in Hi-Fi speaker
- Audio input for devices without bluetooth function
- Built-in rechargeable battery
- Resume/memory function
- High quality audio codec chip for perfect audio performance

Specifications

- Output power: 3W
- Degree of Distortion: <10%
- Effective operating range: 8-10m
- Dimensions: H50 x B58 x D58 mm
- Net Weight:155g

Crackling sound effect use

When starting the device will automatically start the crackling sound effect on SD card

Other operating instructions

1. Press power key to enter bluetooth connection mode, please connect mobile phone with speaker
Bluetooth pairing name: BT-SPEAKER
2. Switch device on again: automatically starts the last connection to the bluetooth device, if searching the last device lasts more than 10 seconds, will exit the connection status, if found automatically connects to device
3. Press the (ON/OFF) key to enter the bluetooth/audio input/SD card mode conversion
4. After bluetooth connection, device will transfer music played on mobile