

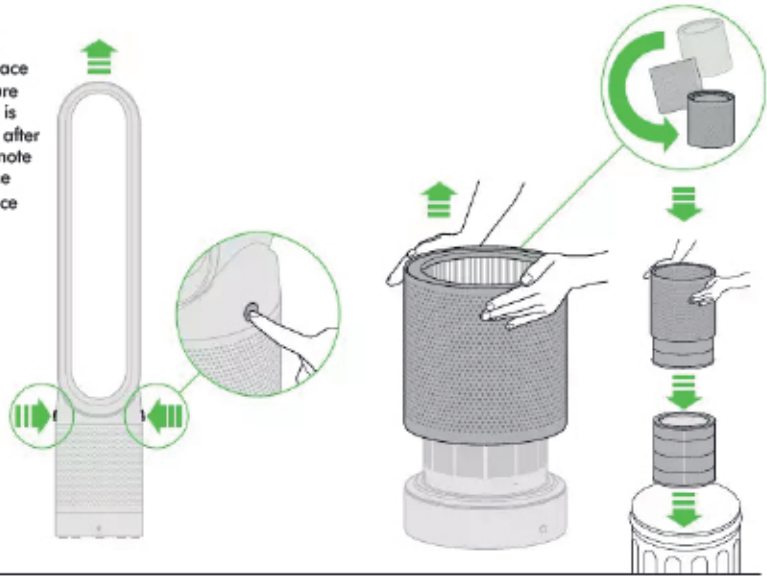
Promessa- Design



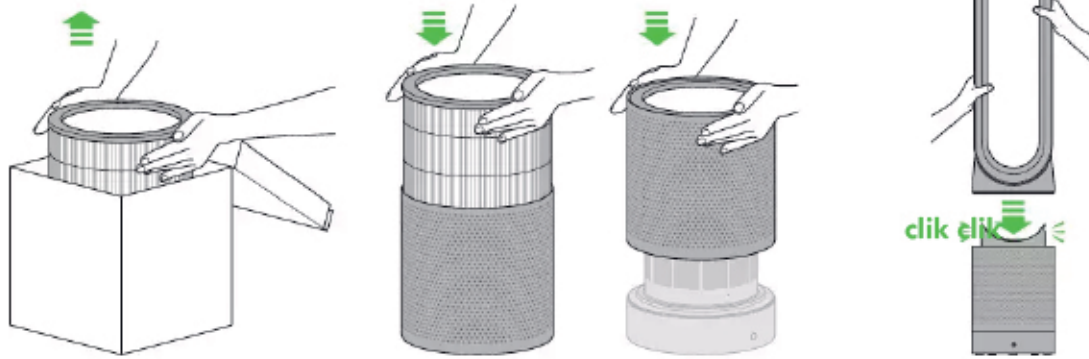
Replacing the filter unit


1 2  

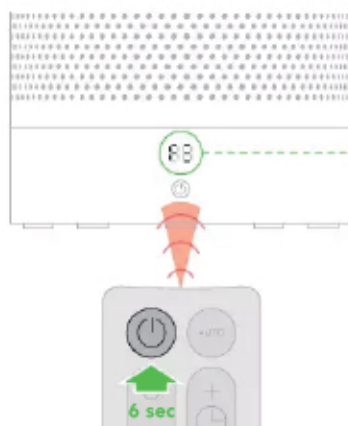
When your non-washable filter unit needs replacing the appliance will display the pattern shown. To replace the non-washable filter unit, follow these steps. Ensure your appliance is unplugged. Your Dyson appliance is programmed to remind you to replace the filter unit after 12 months based on 12 hours usage a day. Please note your indicator will activate sooner with more use. The indicator is only a guide and you may need to replace the filter unit more regularly.



4 5 6



7  When you have re-assembled your appliance, press and hold the 'Standby ON/OFF' button for 6 seconds.



A clockwise-rotating loading pattern will be shown on the LED display.



Once the loading pattern is complete, the appliance will return to its normal usage.