

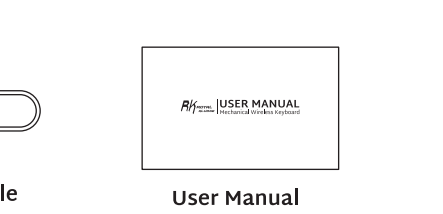
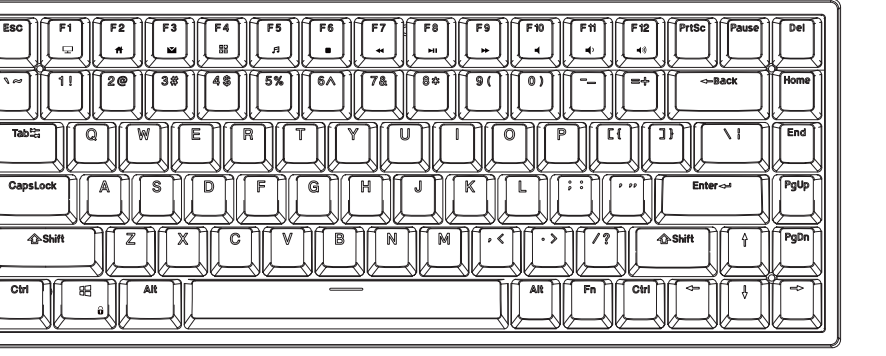


USER MANUAL

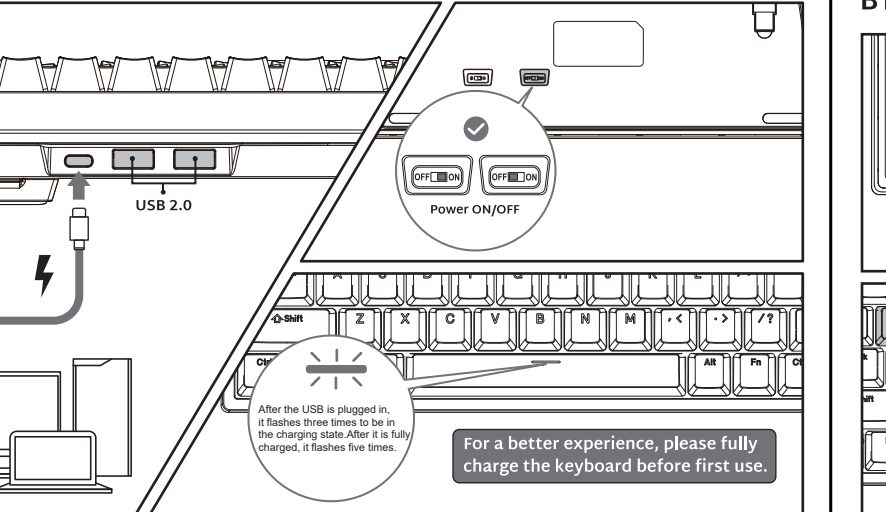
Mechanical Wireless Keyboard

166-85701-06

PRODUCT BASIC

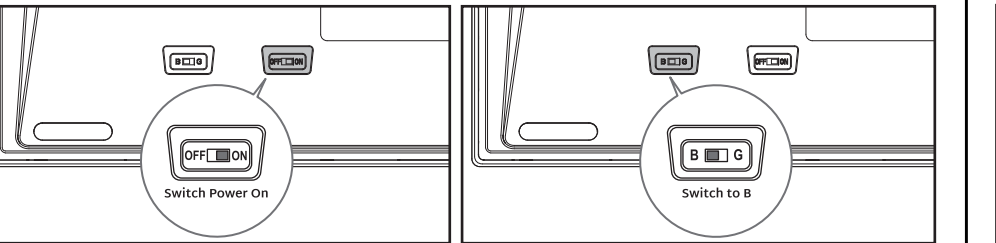


WIRED MODE & CHARGING



HOW TO USE

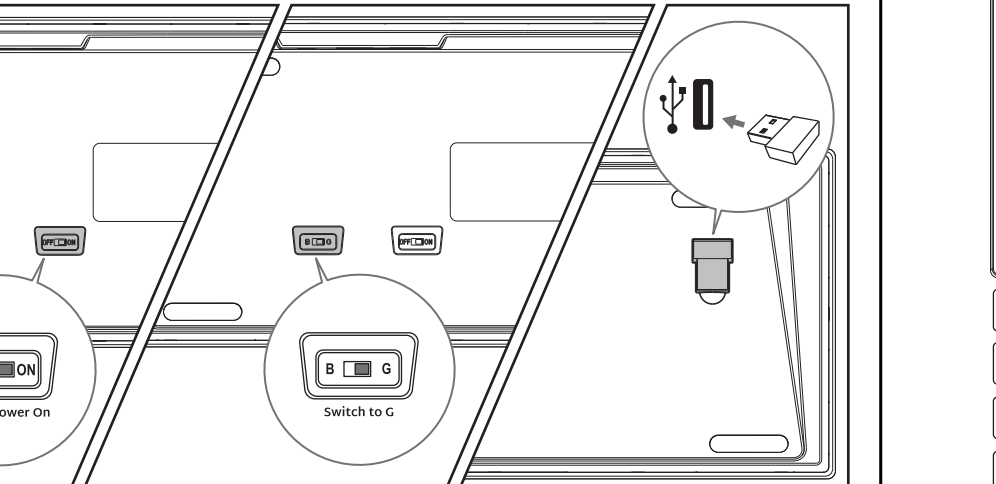
BT Connection



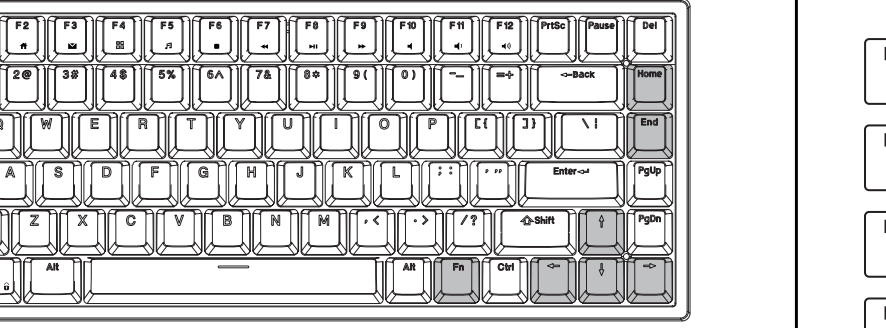
1. SHORT PRESS **Fn+Q/W/E/** to BT Channel
2. LONG PRESS **Fn+Q/W/E/** Entry Pairing Mode

HOW TO USE

2.4Ghz



BACKLIGHT CONTROL



- | | |
|--|--|
| Fn + Prisc INS | Fn + Prisc Scrik |
| Fn + Home ☺ Switch Backlight Mode | Fn + End ☺ Switch Backlight Color |
| Fn + ↑ ☼ Backlight Brightness + | Fn + ↻ ☼ Backlight Speed + |
| Fn + ↓ ☼ Backlight Brightness - | Fn + ↻ ☼ Backlight Speed - |

MULTIMEDIA KEY FOR WINDOWS

In Windows mode(FN + A: switch to Windows system)

- | | |
|--|--|
| Fn + F1 💻 Computer | Fn + F7 ⏮ Last song |
| Fn + F2 🌐 Browser | Fn + F8 ⏸ Play / pause |
| Fn + F3 📧 Mailbox | Fn + F9 ⏭ Next song |
| Fn + F4 🧮 Calculator | Fn + F10 🔇 Mute |
| Fn + F5 🎵 Player | Fn + F11 🔊 Volume - |
| Fn + F6 ■ Stop | Fn + F12 🔊 Volume + |

MULTIMEDIA KEY FOR MAC

MAC system(FN + s: switch to MAC system)

- | | |
|--|---|
| Fn + F7 ⏮ Last song | Fn + F10 🔇 Mute |
| Fn + F8 ⏸ Play / pause | Fn + F11 🔊 Volume - |
| Fn + F9 ⏭ Next song | Fn + F12 🔊 Volume + |

SYSTEM REQUIREMENTS

BT Mode

- Device With Bluetooth 3.0 or later
- PC: Windows 7 or Later
- Mac: macOS X 10.6 Snow Leopard or Later
- iOS: All iPads/iPhone 5 or Later
- Android: 5.0 Lollipop or Later

Wired/2.4Ghz Mode

- Computer With Available USB port
- PC: Windows 7 or Later
- Mac: macOS X 10.6 Snow Leopard or Later

In wireless state, the backlight will not be operated for 5 minutes to sleep. In wired mode, the backlight goes into sleep after 5 minutes without operation

Have an issue with one of our RK products?

Feel free to contact us with any product issues or questions. We will reply as quickly as possible to ensure all your needs are handled. Please contact the seller



WIRELESS TIMELESS ENDLESS