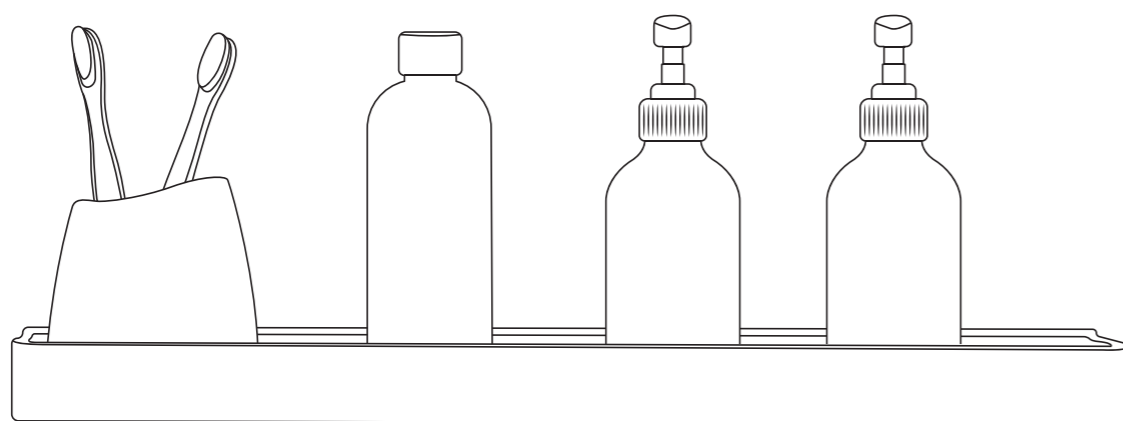


Nolad

Doucherek 2-delig

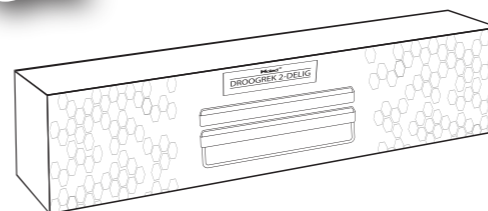
Installatie handleiding



Nolad

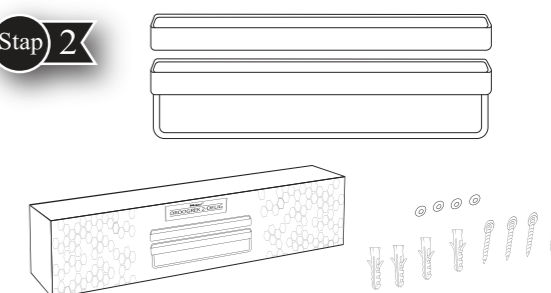
Installatie Handleiding

Stap 1



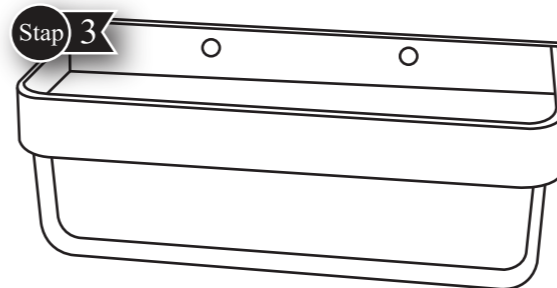
1. Open de verpakking van het doucherek.

Stap 2



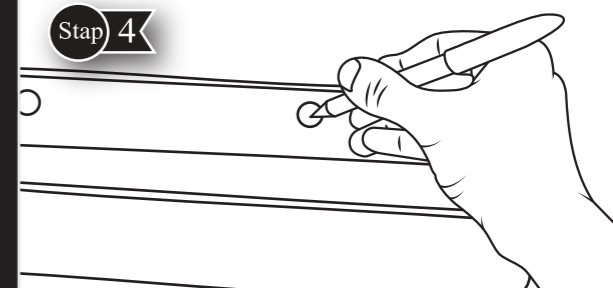
2. Controleer of alle onderdelen zijn geleverd.

Stap 3



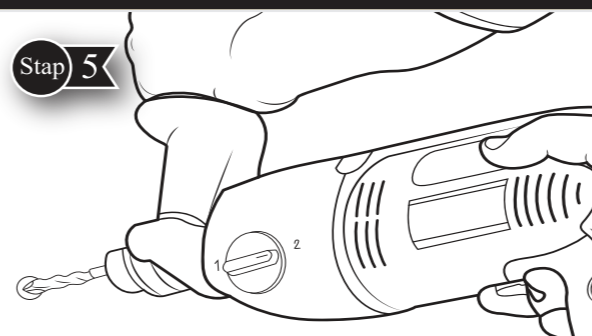
3. Plaats het doucherek op de gewenste positie.

Stap 4



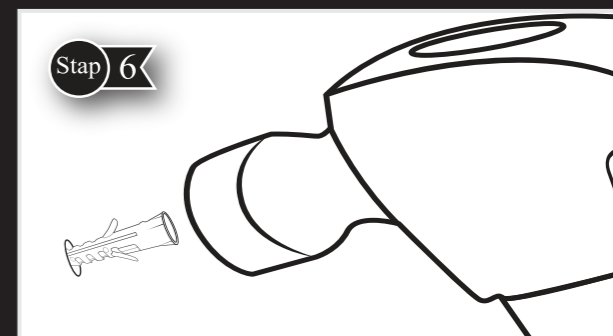
4. Markeer de gewenste locatie.

Stap 5



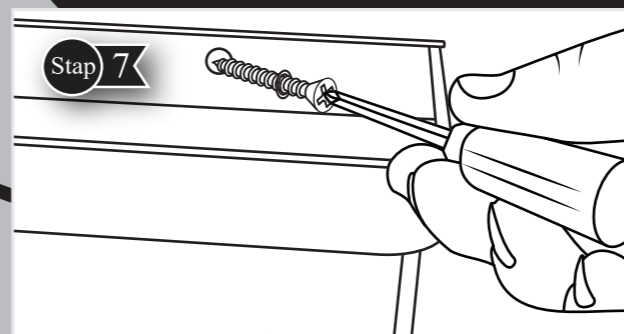
5. Boor gaten op de gemarkeerde punten.

Stap 6



6. Sla de pluggen in de geboorde gaten.

Stap 7



7. Draai de schroeven strak vast in de muur.

Stap 8



8. Geniet van de opgeruimde ruimte!