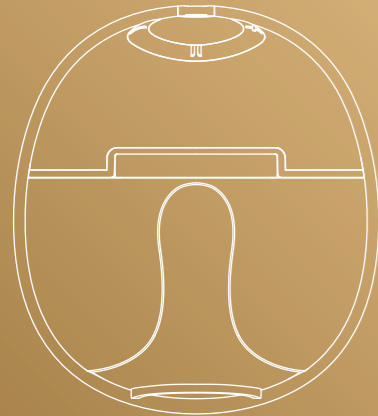


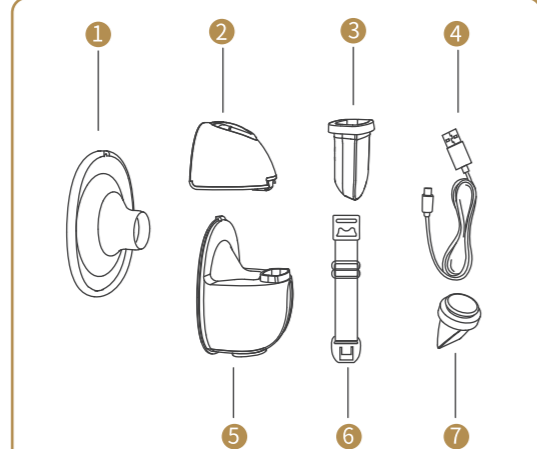
More Light More Intelligent More Comfortable

S32 Wearable Breast Pump-USER MANUAL



Read this user manual before using your wearable breast pump, and keep the user manual for future reference.

Product structure diagram

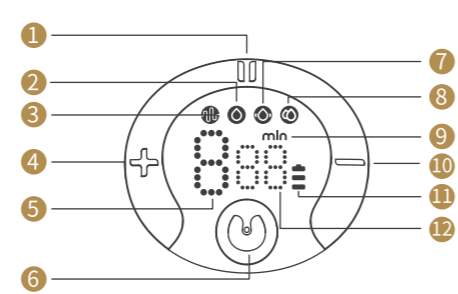


Parts list

- ① Flange
- ② Pump Motor
- ③ Silicone Diaphragm
- ④ USB Charging Cable
- ⑤ Milk Collector
- ⑥ Bra Adjustment Buckle
- ⑦ Valve

01

Description of led display and button function



- ① Pause/Start button
- ② Expression mode
- ③ Stimulation mode
- ④ Level up button
- ⑤ Level display
- ⑥ Power button/ Mode selection button
- ⑦ Massage mode
- ⑧ Automatic mode
- ⑨ Time/Minute
- ⑩ Level down button
- ⑪ Power display
- ⑫ Time display

What's in the box

Flange; Pump Motor; Silicone Diaphragm; USB Charging Cable; Milk Collector; Bra Adjustment Buckle; Valve

02

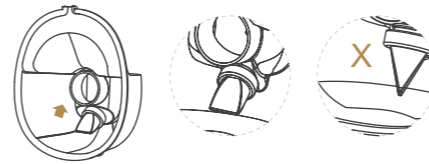
Assembly

To assemble the pump, follow the steps below.

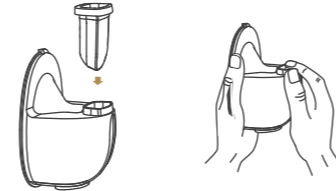
CAUTIONS

- ◆ Make sure that you clean the pump as instructed in this user manual.
- ◆ Make sure that you assemble the pump correctly as instructed in this user manual.
- ◆ To avoid leakage, remove the residue around the rim before assembling.
- ◆ Wash your hands thoroughly before you assemble cleaned components.

1. Install the valve to the milk collector, pay attention to the direction of installation.

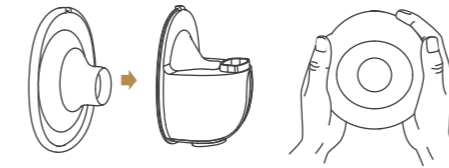


2. Put the silicone diaphragm into the milk collector, and press it with your hands to make the edges fasten tightly to ensure a perfect seal.

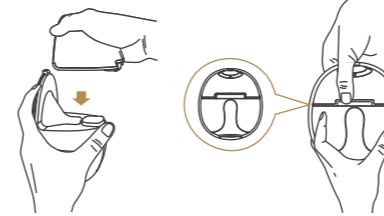


03

3. To install the flange on milk collector, make sure to align the diversion groove on the flange with the backflow groove on the milk collector, and then press the edges with both hands to ensure the seal is in place.



4. Install the main body of the breast pump on the milk collector, align the notch under the main body with the silicone diaphragm, and assemble it downward to fit the milk collector to ensure a complete seal.



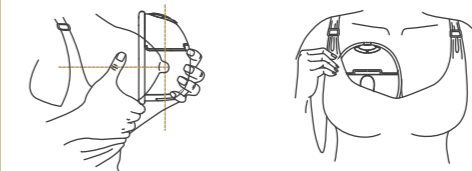
WARNINGS

The breast pump does not work when charging with a Charger.

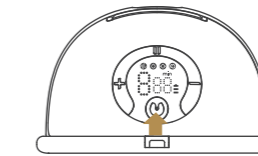
04

To begin pumping

① Press the flange firmly against the breast, leave no gaps and make sure your nipples are centered. Keep it upright. Be careful not to distort the position of the product and the chest, otherwise the breast pump will not have suction.

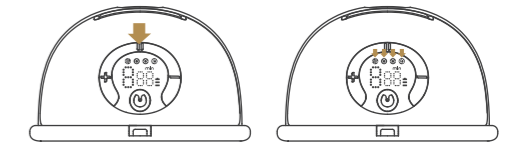


② Long press the power button to start the breast pump.



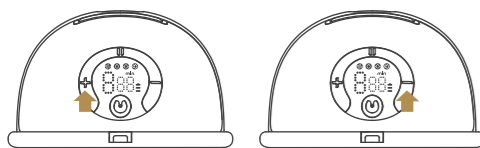
05

③ You can short press the " " button to control the breast pump start and pause. Short press the " " button to switch modes after the breast pump starts. By pressing this button, there are four modes (stimulation mode, expression mode, massage mode and automatic mode) for you to choose. When the " " is lit, it means the stimulation mode; when the " " is lit, it means the expression mode; when the " " is lit, it means the massage mode; when the " " is lit, it means the automatic mode.

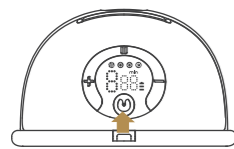


06

④ There are 9 levels in each mode. You can choose the suction that makes you comfortable by short pressing the " + " level up and " - " level down button.



⑤ Long press the power button " " to turn off the breast pump.

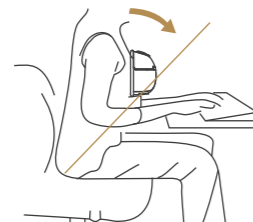


07

Tips: 1. This model has built-in a memory function, when you turn on the machine again, the machine automatically enters and up shifts to the working mode and suction level you used last time.
2. The breast pump will automatically stop after 20 minutes of work.

Breastfeeding sitting position

Relax and sit in a comfortable chair, lean slightly forward (use a cushion for back support). Make sure to keep the breast pump and breast cup upright.



Sitting posture

08

Cleaning

Cleaning & maintenance

	First Time Use	After Each Use
Pump Body	Turn on the Pump by pressing power button.	Wipe with a clean damp cloth with 70% ethyl alcohol or isopropyl alcohol as needed. Do not immerse Pump in water.
Flange, Silicone Diaphragm, Valve and Milk Collector	Boiling in water for 5 minutes. Do not microwave Flange, Silicone Diaphragm, Valve and Milk Collector.	Clean with mild dish washing soap or clean water.

WARNINGS

- ◆ Be careful when removing and cleaning the valve, if the valve is damaged, the breast pump will not work properly.
- ◆ To clean the valve, please rub it gently in the warm water with a few drops of cleaning liquid. Do not insert any objects into the valve, which may cause damage.

Clean by hand

- ◆ Place pump parts in a clean wash basin used only for infant feeding item. Do not place pump parts directly in the sink.
- ◆ Add soap and hot water to basin.
- ◆ Scrub items using a clean brush only for infant feeding items.
- ◆ Rinse by holding items under running water, or by submerging in fresh water in a separate basin.
- ◆ Air-dry thoroughly. Place pump parts, wash basin, and bottle brush on a clean, unused dish towel or paper towel in an area protected from dirt and dust. Do not use a dish towel to rub or pat items dry.
- ◆ Clean wash basin and bottle brush. Rinse them well and allow them to air-dry after each use. Wash them by hand at least every few days.

09

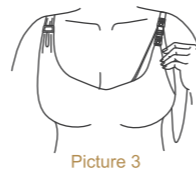
Instructions for bra adjusting buckle

Adjust the length of bra straps, make suction more comfortable. One end of the bra adjustment buckle hung on the inside buckle of nursing bra. The length of the bra buckle on the other end of the bra adjustment buckle.



Picture 1

Picture 2



Picture 3

Battery status indicator illustration

Battery status indicator displayed	Remaining pump time left
Three level is always on	No less than 100 minutes
Two level is always on	No less than 70 minutes
One level is always on	No less than 30 minutes
One level flashing	No less than 10 minutes

10

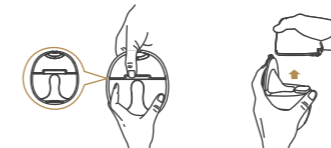
Ending your pumping journey

After you finish pumping please remove the breast pump from the breast. Keep the breast pump upright and remove the motor part and hold the milk collector to pour the breast milk into the bottle. Make sure the milk collector gap of the breast cup is aligned with the mouth of the bottle to prevent breast milk spilled.

1. When you finished expressing, long press the power button to switch off and break the seal between the breast and the pump funnel with your finger, and then carefully remove the pump from your breast.



2. Separate the milk collector from the pump motor ready for feeding/storage. Clean the other used parts to the instructions.



3. Pour the milk into the storage bottle; make sure the slot feature aligned with the bottle.



11

Storing your breast milk

Storing breast milk

1. Only store breast milk collected by sterilized breast pumps.
2. The extracted milk can be placed in a clean and sterilized milk storage bag or a milk bottle with a sealing cushion, and immediately placed in the refrigerator to refrigerate or freeze.

Breast milk cold storage

1. Do not freeze breast milk repeatedly.
2. Do not mix fresh breast milk with frozen breast milk.
3. Be sure to discard the breast milk left after feeding.
4. The extracted milk can be refrigerated in the refrigerator for 48 hours (inside the refrigerator) or frozen in the freezer for three months, and the milk bottle or milk storage bag can be affixed with a label clearly marking the milking date and time.

Unfreeze breast milk

Place the frozen breast milk in the refrigerator compartment for one night to thaw. In an emergency, you can use a bowl of hot water to thaw breast milk. After thawing breast milk, it must be consumed within 24 hours.

Breast milk heating

1. Erect the baby bottle in a bowl of hot water or heat the breast milk safely and quickly with a baby bottle and food heater.
2. Keep in mind! Before feeding your baby, be sure to check the temperature of breast milk.
3. Do not use a microwave oven to heat breast milk, because this may destroy important nutrients and antibodies.
4. In addition, uneven heating may cause partial overheating of the liquid, which may cause burns.
5. Do not immerse the milk storage bottle in boiling water to heat it to prevent it from rupturing or cracking.

12

Warranty

Warranty Card

Product Warranty Card No. _____

Product Model. _____

Serial Number. _____

User Name. _____

Phone Number. _____

Purchase Time. _____ Y _____ M _____ D

Invoice No. _____

Dealer's seal

13