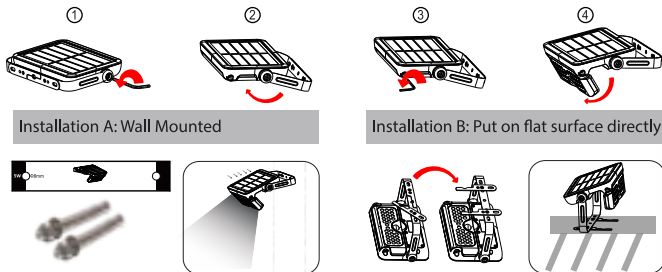


Installation



1. Prepare lamp, accessories and tools well firstly.
2. Use the allen wrench to loosen the bracket (see picture 1), adjust it to the appropriate angle and then fix the screw tightly(see picture 2).
3. Use the allen wrench to loosen the light panel, pull it out and adjust to your demanded lighting angle(see picture 3), then fix the screws tightly (see picture 4).

Installation A: Please use the measure card to drill 2 holes of $\Phi 8\text{mm}$ in correct position, then fix the lamp onto the wall with expansion screws.

Installation B: Push aside the stand bracket and put it on a flat surface.

Notice & Warning

1. This is a solar powered lamp, please install it in a location where can get enough sunshine.
2. Please note the lighting time depends on sunshine duration & weather.
3. The lamp will light up automatically at dusk.
4. Built-in intelligent IC with over-charge, over-discharge and over-voltage protection.
5. The lamp is equipped with an internal battery pack, which is replaceable. If any need, please contact seller for correct new battery pack.
6. If the battery is taken out and put back in or replaced with new ones, please toward the solar panel to sunshine or a strong light to activate the lamp.
7. Non-professionals please do not disassemble the lamp.
8. Please do not dispose the battery with household garbage to avoid explosion.

V-TAC[®]

INNOVATIVE LED LIGHTING

INSTRUCTION MANUAL



REACH EN62471

TUV

CE



Model: VT-777-5

Please read and follow all instructions to operate.
Save this manual for future reference.

Specification

SKU	8547
Power/Lumen	5W / 500LM
LEDs	SMD2835*30PCS
Li-ion Battery	18650/3.7V/3000mAh, replaceable
Solar Panel	2.3Wp, Poly Crystalline Silicon
Lighting Panel	135° Adjustable
Bracket	360° Adjustable
IP Degree	IP65 waterproof
Beam Angle	90°
Detection Angle/Area	120° / ≤6Mtrs
Charging Time	6hrs per day
Working Time	More than 4~5 nights
Installation Height	≤ 4Mtr
Lifespan	35,000hrs

Features



Solar Powered



Light on/off Automatically



2 Working Modes



Battery Replaceable



Multi Functional



ZERO Electricity Cost



PIR Inductive



IP65 Waterproof



Cordless



Long Lasting

Working Modes



On/Off

Sensor Mode



When battery capacity above >30% Automatically turns on to full brightness when motion is detected in the range ≤6mtrs, then dim to weak brightness in 20 seconds of no motion.



When battery capacity below <30% Automatically turns on to full brightness when motion is detected in the range ≤6mtrs, then turns off in 20 seconds of no motion.

Constant Lighting Mode



Press the button for 3 seconds and shining one time, lamp turns to constant lighting mode, both motion and light sensors disabled. Permanently keep lighting until the battery capacity reduces to zero switching back to Sensor Mode.

Applications

* It can be used as wall light, flood light, security light, camping light, portable light, work light etc, very flexible and functional!

* You can easily install it in your garden, courtyard, garage, pathway, entrance, villa etc.