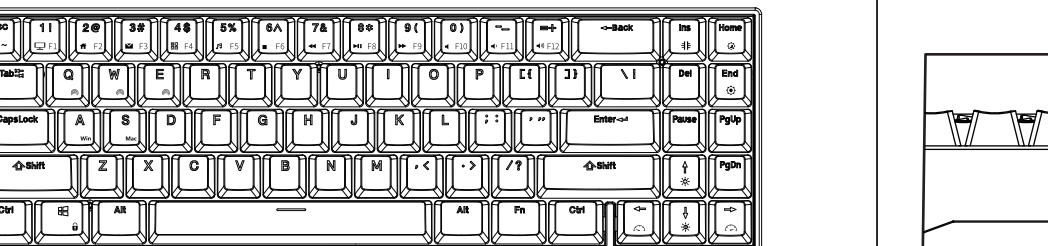


RK ROYAL KLUDGE Mechanical Keyboard

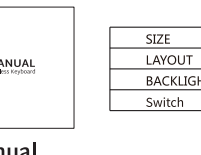
PRODUCT BASIC



Keyboard



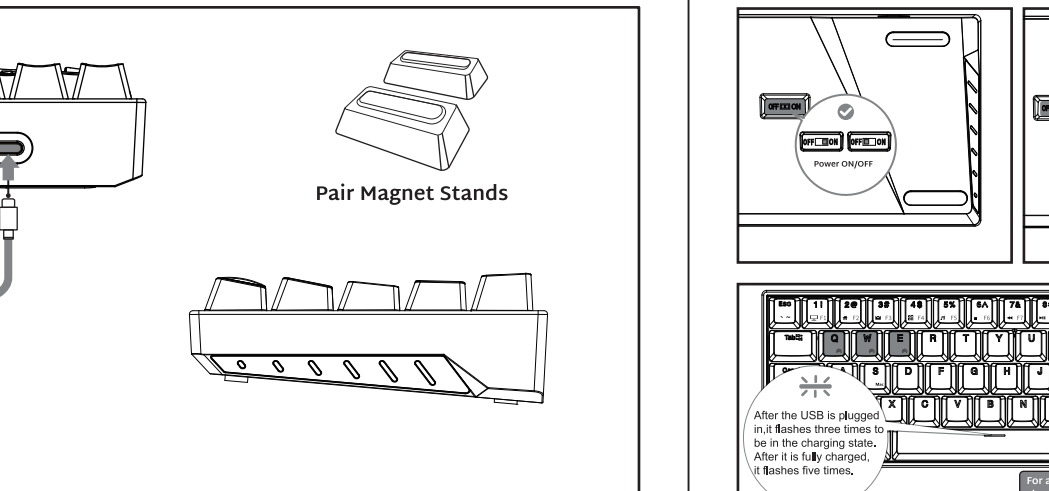
Type-C Cable



User Manual

SIZE	330(L)×102(W)×45.7(H)±2mm
LAYOUT	71 KEY
BACKLIGHT	LED
Switch	Mechanical switch

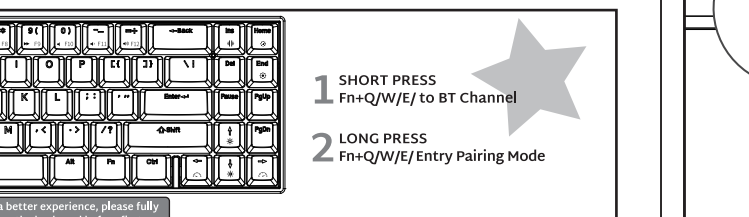
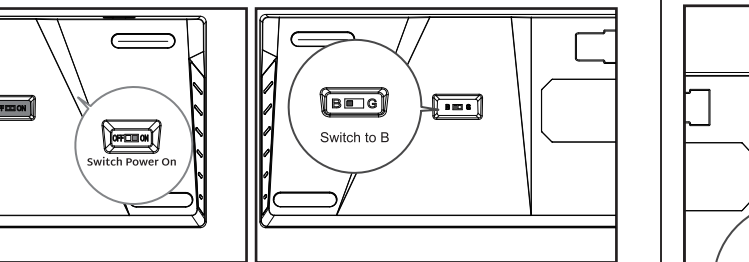
WIRED MODE



Pair Magnet Stands

HOW TO USE & CHARGING

BT Connection



1 SHORT PRESS
Fn+Q/W/E to BT Channel

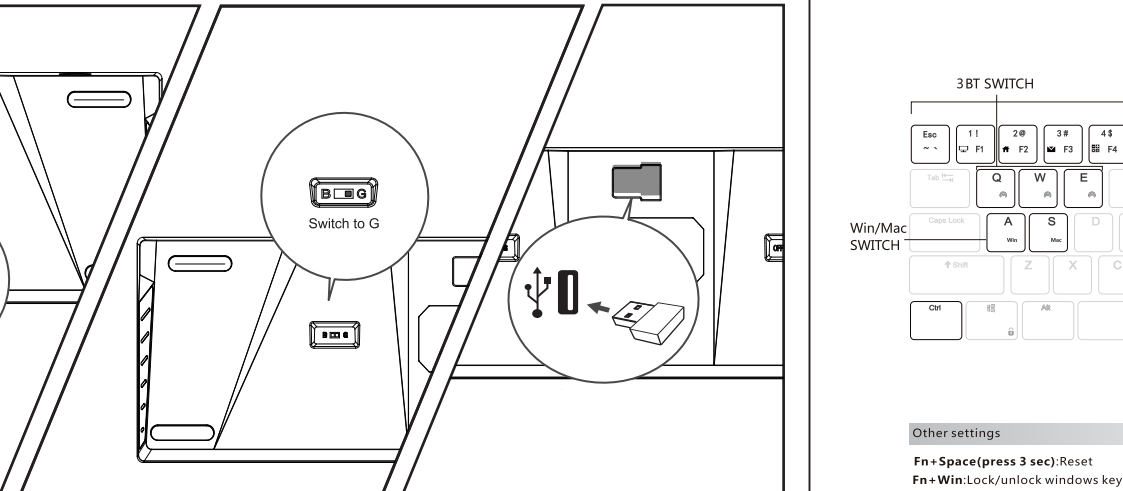
2 LONG PRESS
Fn+Q/W/E/Entry Pairing Mode

After the USB is plugged in, it flashes three times to be in the charging state. After it is fully charged, it flashes five times.

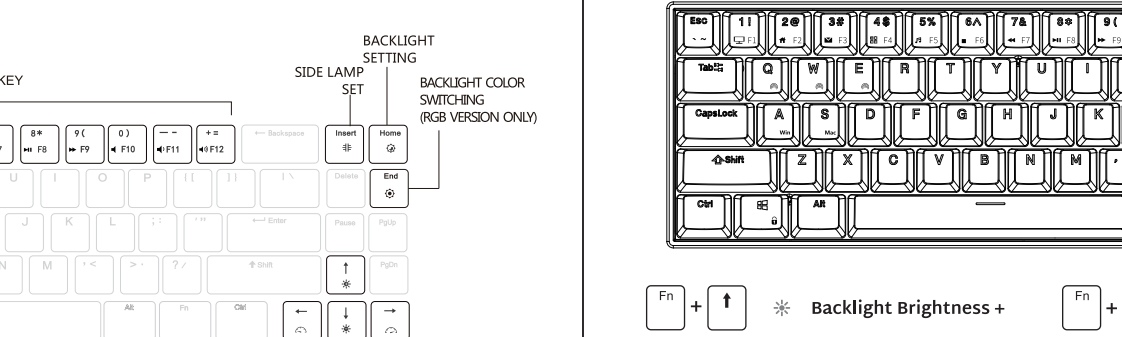
For a better experience, please fully charge the keyboard before first use.

HOW TO USE

2.4G link

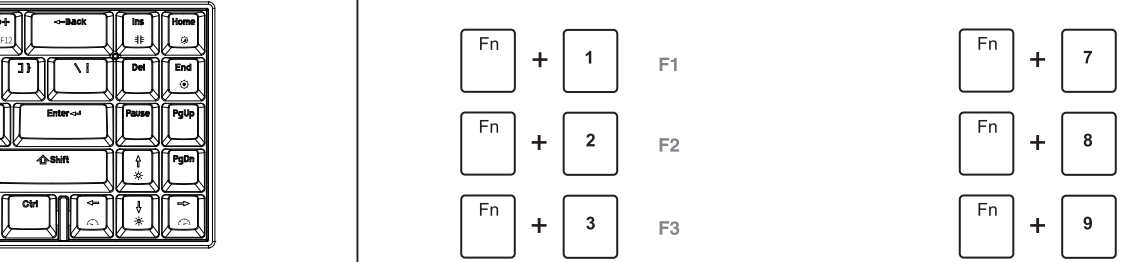


HOT KEY



Other settings:
Fn + Space (press 3 sec): Reset
Fn + Win Lock/Unlock windows key

BACKLIGHT CONTROL



Fn + ↑ * Backlight Brightness +
Fn + ↓ * Backlight Brightness -
Fn + → Backlight Speed +
Fn + ← Backlight Speed -

Fn + [Lamp Icon] Side lamp cycle switching
Fn + [Monochrome Icon] Monochromatic conditioning cycle (The same applies to RGB)
Fn + [Switch Icon] Switch Backlight Mode

SPECIAL FUNCTION KEYS

Fn + 1	F1	Fn + 7	F7
Fn + 2	F2	Fn + 8	F8
Fn + 3	F3	Fn + 9	F9
Fn + 4	F4	Fn + 0	F10
Fn + 5	F5	Fn + -	F11
Fn + 6	F6	Fn + =	F12

MULTIMEDIA KEY FOR WINDOWS

In Windows mode (Fn + A: switch to Windows system)
FN + Left Ctrl (The primary key function and the second function of the composite key are interchanged)

Fn + F1	Computer	Fn + F7	Last song
Fn + F2	Browser	Fn + F8	Play / pause
Fn + F3	Mailbox	Fn + F9	Next song
Fn + F4	Calculator	Fn + F10	Mute
Fn + F5	Player	Fn + F11	Volume-
Fn + F6	Stop	Fn + F12	Volume+

MULTIMEDIA KEY FOR MAC

MAC system (Fn + s: switch to MAC system)
FN + Left Ctrl (The primary key function and the second function of the composite key are interchanged)

Fn + F1	Last song	Fn + F7	Last song
Fn + F2	Play / pause	Fn + F8	Play / pause
Fn + F3	Next song	Fn + F9	Next song
Fn + F4	Mute	Fn + F10	Mute
Fn + F5	Volume-	Fn + F11	Volume-
Fn + F6	Volume+	Fn + F12	Volume+

SYSTEM REQUIREMENTS

BT Mode

- Device With Bluetooth 3.0 or later
- PC: Windows 7 or Later
- Mac: macOS X 10.6 Snow Leopard or Later
- iOS: All iPads/iPhone 5 or Later
- Android: 5.0 Lollipop or Later

Wired/2.4Ghz Mode

- Computer With Available USB port
- PC: Windows 7 or Later
- Mac: macOS X 10.6 Snow Leopard or Later

In wireless state, the backlight will not be operated for 5 minutes to sleep. In wired mode, the backlight goes into sleep after 5 minutes without operation

Have an issue with one of our RK products?
Feel free to contact us with any product issues or questions. We will reply as quickly as possible to ensure all your needs are handled. Please contact the seller.

