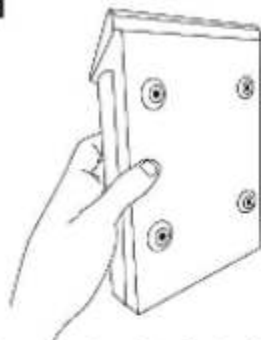


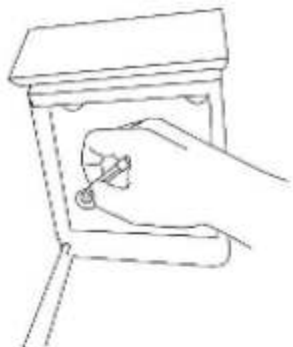
# INSTRUCTION

## STEP 1



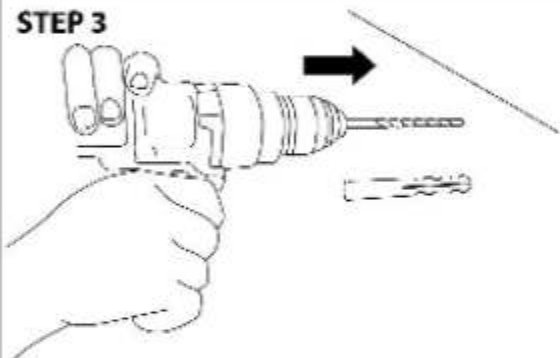
Showing the back of the letterbox which is already pre-drilled for wall mounting

## STEP 2



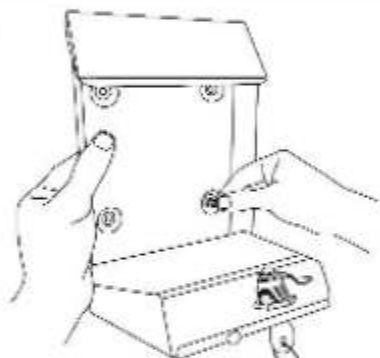
Measuring the distance between the holes and marking the wall

## STEP 3



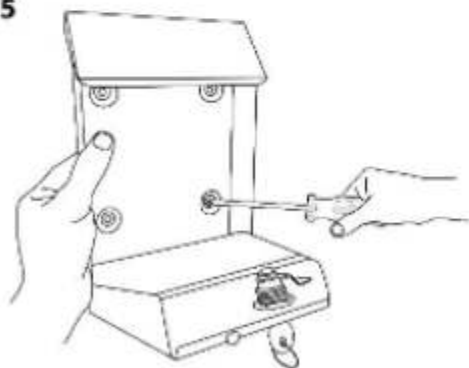
Drilling and fitting rawplugs

## STEP 4



Hanging the letterbox and putting the screws in

## STEP 5



Tighten screws

## STEP 6



Letterbox in situ

Because of the variety of different wall types, we cannot always provide you with the exact fixings you will need to fix your letterbox to the wall. You must first identify the type of wall you intend to fix the product onto and then ensure that the fixing kit provided is suitable for the type of surface.