

EN: Warnings

Don't drop, dissemble or attempt to repair the charger by yourself.
Avoid exposure to water or high humidity.
Don't expose to any heat source.
Keep out of reach of children.
Don't use in the presence of flammable gas.

NL: Waarschuwing

Probeer de lader niet zelf te repareren of te demonteren.
Vermijd blootstelling aan water of een hoge luchtvochtigheid.
Niet blootstellen aan een warmtebron.
Buiten bereik van kinderen houden.
Niet gebruiken in de aanwezigheid van brandbaar gas.

DE: Achtung

Öffnen Sie nicht selbst den Lader. (Garantieverlust)
Vermeiden Sie den Betrieb bei hoher Luftfeuchtigkeit oder Einwirkung von Wasser.
Halten Sie den Lader fern von Hitzequellen.
Den Lader bitte fern von Kindern halten.
Das Gerät nicht verwenden in der Nähe von brennbaren Gasen oder Flüssigkeiten.

FR: Attention

Ne laissez pas tomber, ne désexsembler ou tenter de réparer la centrale par vous-même.
Eviter l'exposition à l'eau ou à une humidité élevée.
Ne pas exposer la centrale électrique d'une source de chaleur.
Tenir hors de portée des enfants.
Ne pas utiliser en présence de gaz inflammables.

IT: ATTENZIONE

Non usare vicino ad una fiamma.
Non esporre vicino a fonti di calore elevato
Non modificare la struttura o disassemblare
Smettere di utilizzare immediatamente nel caso si sentano odori strani, calore, o strani rumori provenire dallo stesso.
Non lasciar giocare bambini con.
Usare solo in luoghi asciutti.
Riciclare l'apparato secondo le norme vigenti nella nazione di utilizzo.

CZ: UPOZORNĚNÍ

Neupustte, nerozebírejte, ani se nepokoušejte spravit nabíječku sami.
Vyvarujte se působení vody nebo vysoké vlhkosti.
Nevystavujte tepelným zdrojem.
Uchovávejte mimo dosah dětí.
Nepoužívejte v blízkosti hořlavých plynů.

SK: Upozornenia

Neupustite, nerozoberajte, ani sa nepokúšajte opraviť nabíjačku sami.
Vyvarujte sa pôsobeniu vody alebo vysokej vlhkosti.
Nevystavujte tepelným zdrojom.
Uchovávať mimo dosahu detí.
Nepoužívajte v blízkosti horľavých plynov

SE: varning

Tappa inte, ta inte isär eller försök reparera laddaren själv
Utsätt inte för vatten eller hög fuktighet
Utsätt inte för värme.
Förvaras utom räckhåll för barn.
Använd ej i närheten av lättantändlig gas.

ES: Atención

No dejar caer el producto.
No desmontarlo ni intentar repararlo, por sus propios medios.
Evitar el contacto con el agua o fuente de humedad.
No exponer la alimentación a una fuente de calor.
Mantenga fuera del alcance de los niños.
No utilizar en presencia de fuentes o gas inflamables

*** THIS MANUAL IS AVAILABLE IN DIFFERENT LANGUAGES ON OUR WEBSITE**

Hoofdveste 19
3992 DH Houten
The Netherlands
T: + 31 (0) 30 635 4800
F: + 31 (0) 30 635 4801
www.a-solar.eu



Laptop Power Bank

AL390 AC Power Bank 18.000mAh



EN: Thank you for purchasing our product

NL: Dank u voor de aankoop van ons product

DE: Vielen Dank, dass Sie sich für unser Produkt entschieden haben

FR: Merci d'avoir acheté notre produit

IT: Grazie per aver acquistato questo prodotto

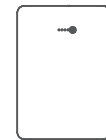
CZ: Děkuje vám za zakoupení tohoto výrobku

SK: Ďakujeme vám za zakúpenie tohto výrobku

SE: Tack för att du köpt vår produkt

ES: Gracias por comprar nuestro producto

Box contains



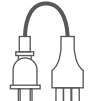
POWER BANK
AL390



PROTECTIVE
POUCH



AC ADAPTER

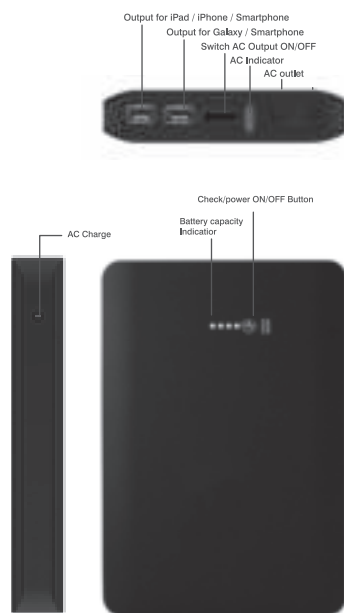


AC CABLE

Specifications:

Battery:	18.000mAh
Battery type:	Li-ion
Input:	19V/2A
AC output:	120VAC 60hz max 85W
USB output:	2x 5v/2.4A
Charging time:	3-4 hrs
Dimensions:	186x129x28mm
Weight:	610grams

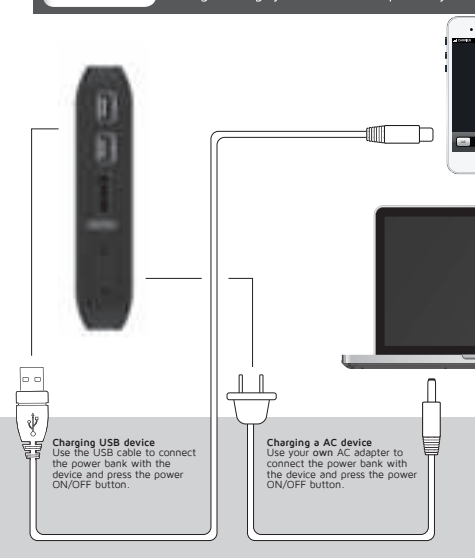
1. Product overviews



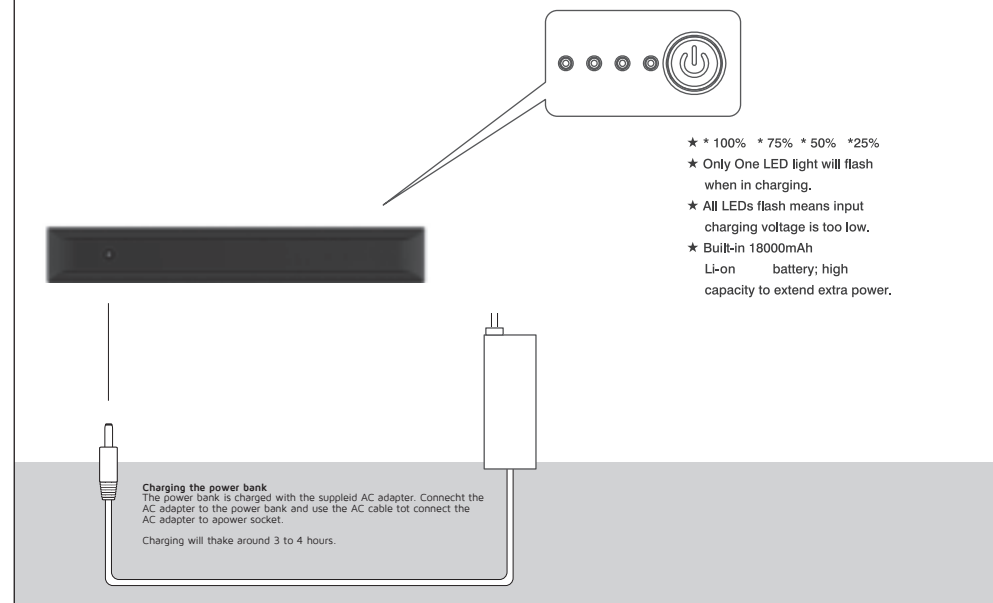
2. Quick start/ first use

**PRE
CHARGED**

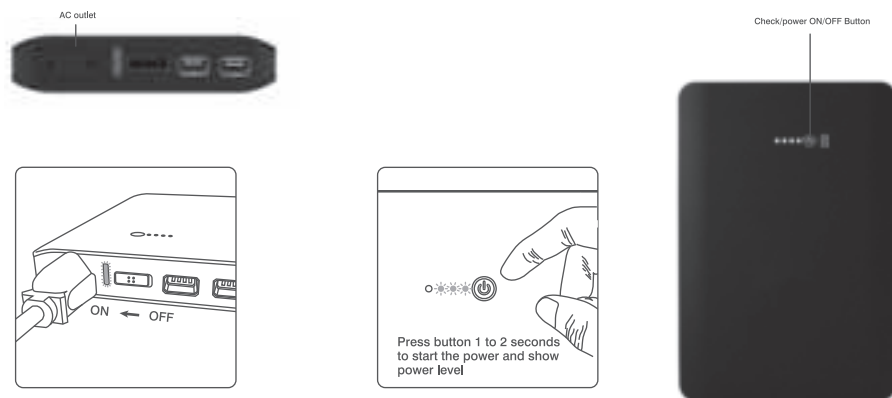
All Xtorm chargers come pre-charged out of the box! This means that you can instantly start charging your mobile devices without first having to charge your Xtorm back-up battery!



3. Charging the Power Bank



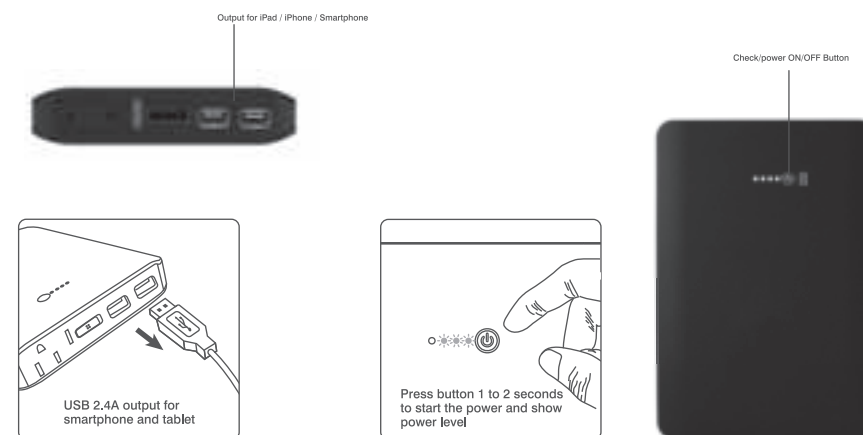
4. Charging a device with AC power output max. 120V/85W



Step 1
Use your own AC adapter which is supplied with the device you want to charge. Connect the adapter to the powerbank

Step 2
Switch the AC output switch towards the power plug and press the "Power" button on top of the power bank for 1 or 2 seconds. The charging will begin and the LEDs will indicate the power level.

5. Charging a device with USB power output



Step 1
Use the supplied USB cable or your own USB cable to the USB port of the power bank.

Step 2
Switch the AC output switch towards the USB ports and press the "Power" button on top of the power bank for 1 or 2 seconds. The charging will begin and the LEDs will indicate the power level.