

# Corner stand Hole installation



1 Mark the installation location



2 Drill with a 6mm drill bit



3 Drive in the expansion screw



4 Screw on and tighten the screws



5 Cover with a decorative cap



6 The installation is complete

# Square shelf Hole installation



1 Mark the installation location



2 Drill with a 6mm drill bit



3 Drive in the expansion screw



4 Screw on and tighten the screws



5 Cover with a decorative cap



6 The installation is complete

# Corner stand Punch-free installation

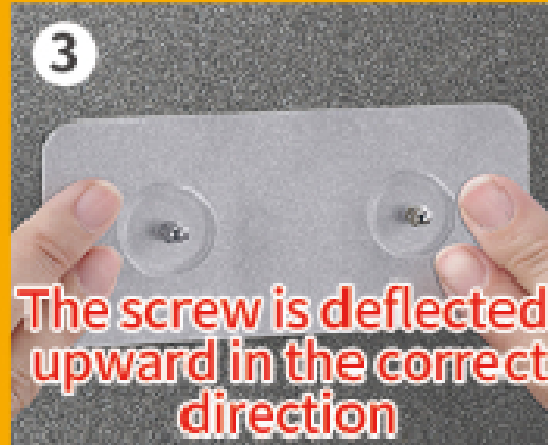
Please wipe the wall clean and keep it dry before installation



1 Mark the installation location

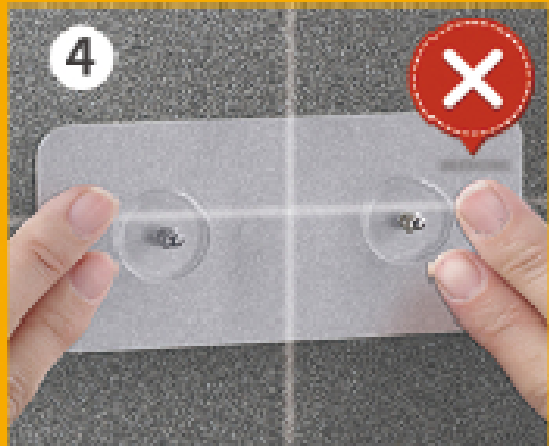


2 Tear off the nail free adhesive backing film



The screw is deflected upward in the correct direction

3 Press hard on the wall to squeeze out bubbles inside



Note: Do not paste ceramic tile joints



5 Install the rack in 72 hours



6 The installation is complete

We are serious about doing every product, please give us a good comment if you think the quality is good. Thank you!

# Square shelf Punch-free installation

Please wipe the wall clean and keep it dry before installation



1 Mark the installation location



2 Tear off the nail free adhesive backing film



The screw is deflected upward in the correct direction

3 Press hard on the wall to squeeze out bubbles inside



Note: Do not paste ceramic tile joints



5 Install the rack in 72 hours



6 The installation is complete

We are serious about doing every product, please give us a good comment if you think the quality is good. Thank you!