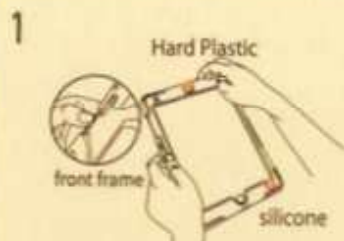


FASHION DEFENSE CASE

Shock Resistance with Shoulder & Hand Strap

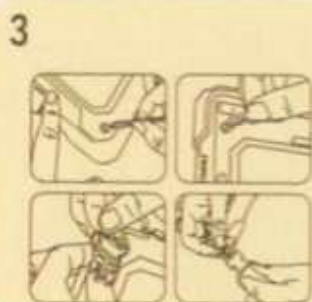
INSTALL INSTALLER



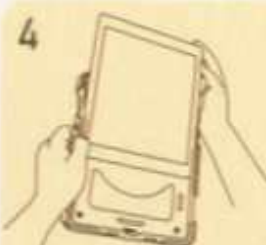
Pry the front frame slightly on each sides to unclasp the hard plastic frame.



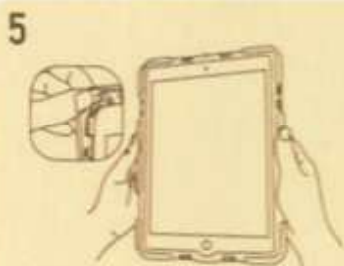
Peel away the soft silicone shell gently on all 4 corners.



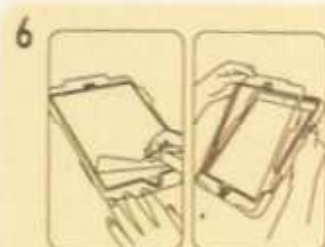
If you want to use the strap. Please thread it to the hole sites and buckle it before installing the case.



Insert the tablet in a vertical orientation until it reaches the bottom of the case.



Flip back the silicone shell around the case, be sure that all edges and ports are aligned.



Please tear off the blue film inside the screen protector. Then place the front frame on the case and press the front frame so that it is firmly buckled on the case.

Front cover with built-in screen protector already, will NOT compatible with tempered glass screen protector simultaneously.

Shock Proof | Create a longevity
Tablet Case | world

