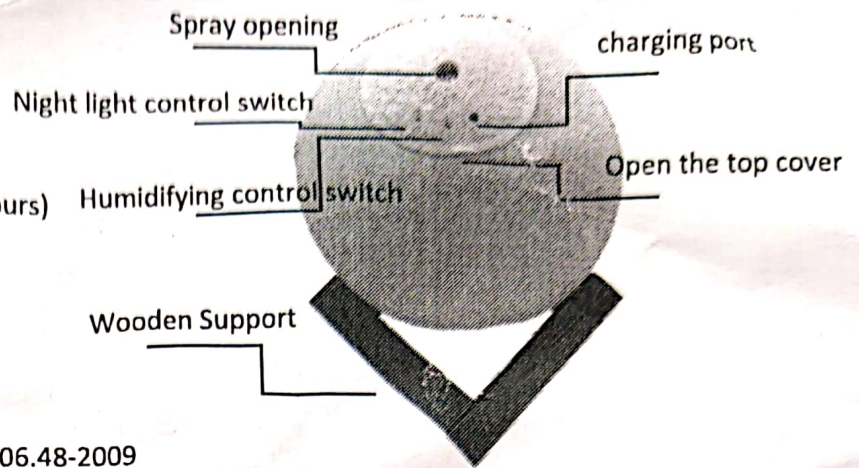


Product Details:

Product name: moon lamp humidifier
Product model: JSQ-08
Working voltage: DC5V
Working current: 400mA
Power consumption: 2W
Water tank capacity: 880mL (Use for 30 hours)
Atomization amount: 25-35 mL/H
Product size: 13 CM
Product weight: 240 G
Product material: PVC
+ PP electronic original + silicone
Quality inspection: qualified
Executive standard: GB4706.1-2005 GB4706.48-2009
Place of Origin: Shenzhen, China



Instructions: (Please turn on the power before use)

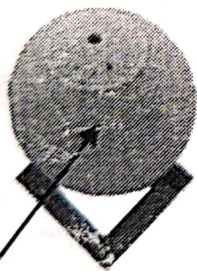
Spray operation: Touch the spray switch metal head, open the continuous spray mode (spray the blue indicator light on the job), touch again, open the intermittent spray mode, (spray 3 seconds to stop 3 seconds), touch again and close the spray work (end the spray work blue indicator light extinguish). This cycle operates.

Night light operation: Touch the Nightlight control switch metal head, control and adjust the light, each touch to change the color of the light, white - yellow - warm white - off, in turn cycle. At the same time, the length of the golden metal head can adjust the brightness of the lamp.

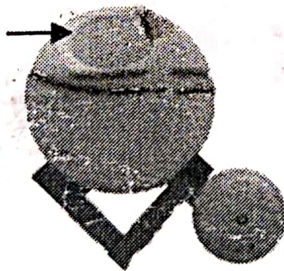
Product standard: One lunar light humidifier, one data line, one manual, one solid wood base, one cotton swab.

Product operation operation diagram:

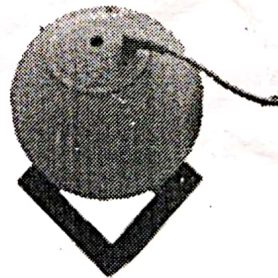
Step A



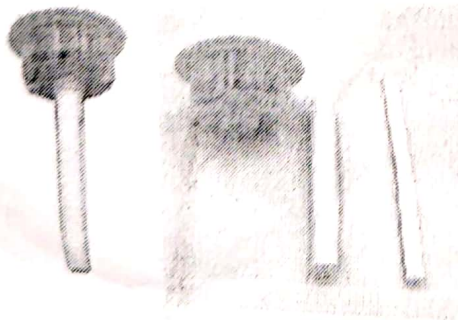
Step B



Step C



Replacement cotton swab:
Pull out the cotton



swab to replace the cotton swab, pay attention to the bottom spring when replacing.

Precautions:

- 4 Please add water before using spray. It is forbidden to use humidification function in case of water shortage. It is recommended to soak the whole cotton swab in water and then put it into the machine. Be careful not to lose the bottom spring, so as not to affect the use.
- 5 If there is a water droplet on the atomizer, wipe the water droplets to avoid the abnormal use of spray mode.
- 6 When adding flavor, please use it evenly. It is recommended to use water-based aromatherapy water. Do not add oily essential oil to avoid oily material blocking the atomized sheet.