

The Rollei logo is positioned in the top left corner, featuring the brand name in white on an orange rectangular background. The background of the entire page is a photograph of a person in a red jacket and hat standing on a hill, looking at a camera on a tripod against a sunset sky.

# Stativ C5i/C6i Carbon

Tripod C5i/C6i Carbon

## Bedienungsanleitung | User Guide

For German | English | French | Spanish | Italian | Portuguese |  
Chinese (traditional and simplified)

[www.rollei.de](http://www.rollei.de)

Bedienungsanleitung ..... 4

Manual instruction ..... 5

Notice d'utilisation ..... 6

Instrucciones ..... 7

Istruzioni ..... 8

Instruções ..... 9

使用説明 ..... 10

使用说明 ..... 11



# Rollei Stativ C5i Carbon/C6i Carbon Bedienungsanleitung

Danke, dass Sie sich für unsere Produkte entschieden haben!  
Vor der Verwendung bitte sorgfältig durchlesen.

Winkeleinstellung  
Drücken Sie den Knopf, um den Winkel des Stativbeins einzustellen.

Um 180° zusammenklappbar

Hoher Winkel    Mittlerer Winkel    Niedriger Winkel    Zusammengeklappt

Arretierschraube  
Ziehen Sie diese Schraube fest, um sicherzustellen, dass sich der Kugelkopf nicht verstellt. Benutzen Sie den Sechskantschlüssel

Universelle Kamera-schraube mit 3/8" und 1/4"

Mittelsäulen-Drehknopf

Einbeinstativ-Duo-Lock-Systeme

Allwetter-Polsterung

System zum Fixieren des Stativbeins

Stativ-Winkel-Einstellknopf

Mittelsäule

**Umbau zum Einbeinstativ**

1. Stativbein lösen
2. Plattform lösen
3. Das Monopod wird aus der Plattform und dem Bein erstellt.

**Umbau zum Einbeinstativ (ausgezogene Länge)**

1. Stativbein lösen
2. Plattform lösen
3. Mittelsäule entfernen und dann wieder kombinieren.
4. Ein lang ausgezogenes Einbeinstativ besteht aus Mittelsäule und Bein

Lösen - Fixieren

Im Lieferumfang enthalten:  
Multifunktionsschlüssel, Gürteltasche für Einbeinstativ

Modell-Nr.	Segmente	Max. D	Packmaß	Min. H	Max. H	Gewicht	Tragkraft	Höhe Monopod klein	Höhe Monopod groß	Gewicht
C5i Carbon	4-sec.	25 mm	43,5 cm	2,5 cm	157,5 cm	1.335 kg	8 kg	49-131,5 cm	82-164,5 cm	568/654 g
C6i Carbon	4-sec.	28 mm	47,5 cm	2,5 cm	171,5 cm	1.627 kg	12 kg	53,5-143 cm	89,5-179,5 cm	681/804 g

\*Design und Spezifikation des tatsächlichen Produkts können abweichen.

# Rollei Tripod C5i Carbon/C6i Carbon Manual

Thanks for choosing our products. Please read carefully before using.

Angle adjustment  
Press the button to adjust the leg angle

Um 180° reverse folding

High angle    Middle angle    Low angle    Folded

Anti-rataion screw  
Tighten this screw to ensure that the ball head is fixed. Use the hexagon wrench.

Universal camera screw with 3/8" and 1/4"

Center column knob

Monopod Duo-lock systems

All-weather cushion

System zum Fixieren des Stativbeins

Tripod angle adjustment knob

Center column

Leg lock system

**How to become a monopod**

1. Loosen the leg
2. Loosen the platform
3. A real monopod is composed of platform and leg

**How to become a monopod (extended length)**

1. Loosen the leg
2. Loosen the platform
3. Remove the center column and then re-combine it
4. An extended length monopod is composed of center column and the leg

Loosen - Tighten

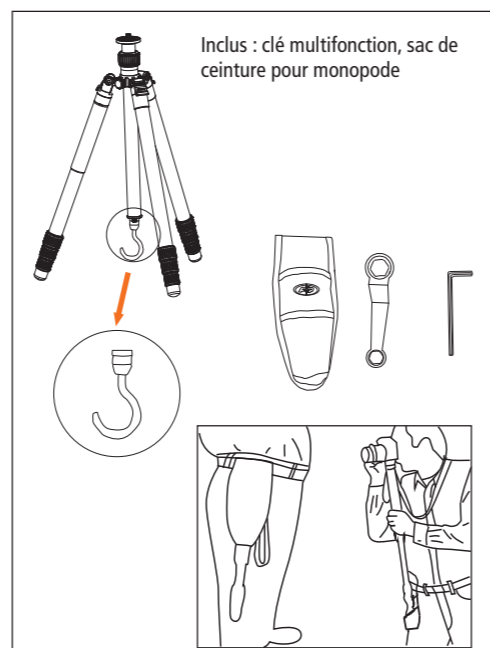
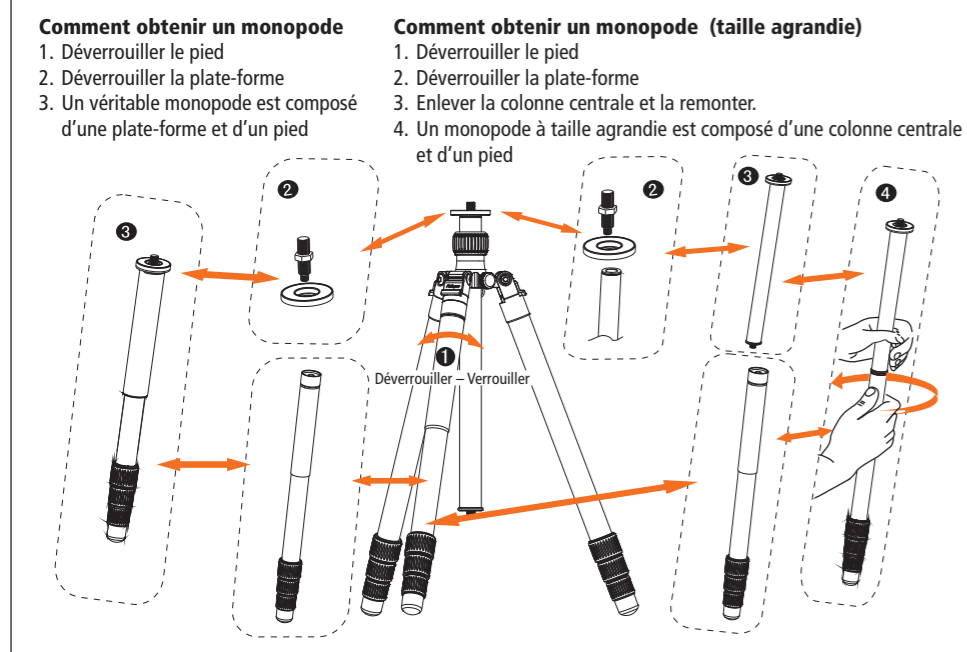
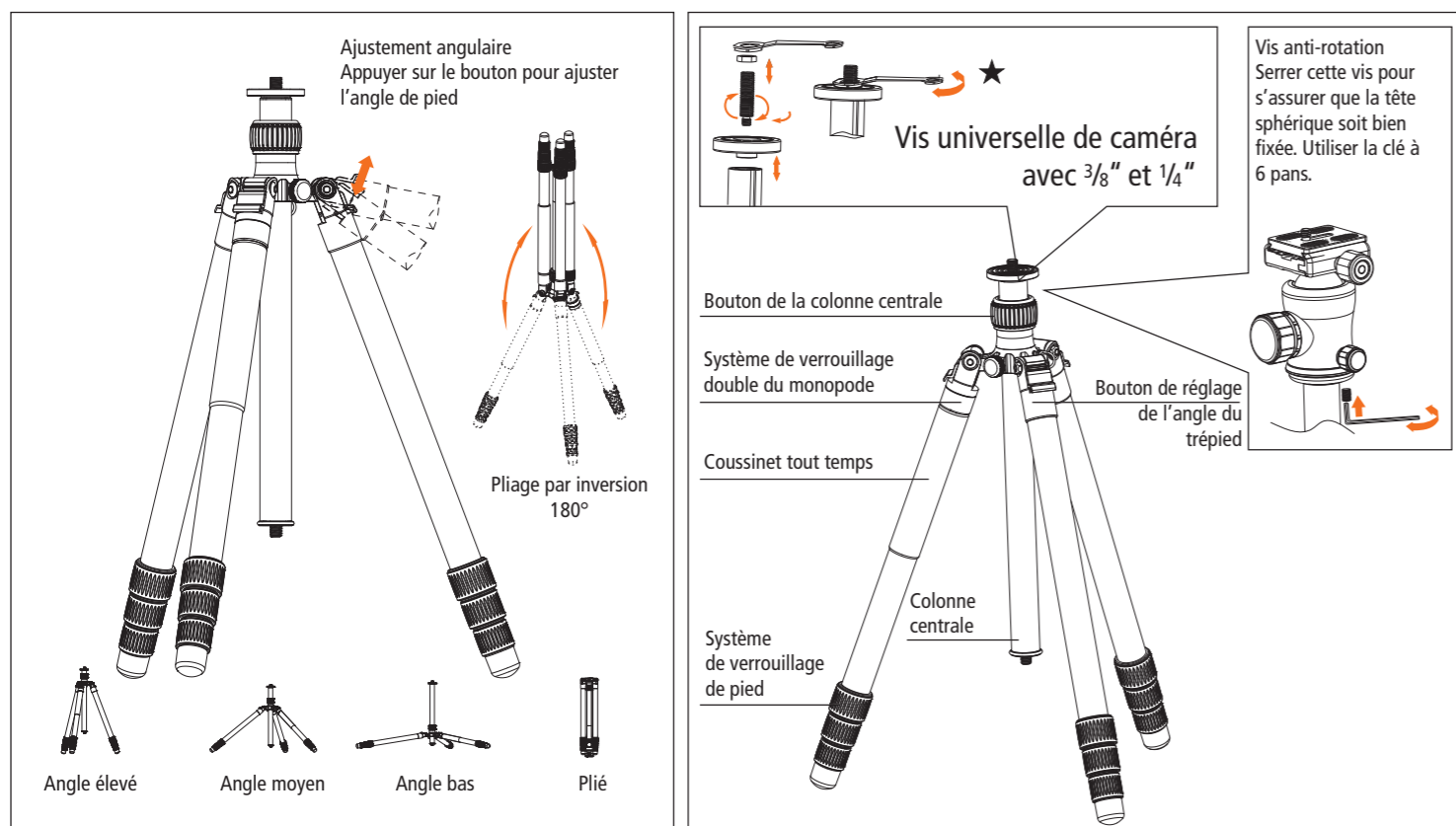
Included: multifunctional wrench, waist bag for monopod

Model no.	Sections	Max. D	Folded	Min. H	Max. H	Weight	Loading	Height Monopod small	Height Monopod large	Weight
C5i Carbon	4-sec.	25 mm	43.5 cm	2.5 cm	157.5 cm	1,335 kg	8 kg	49-131.5 cm	82-164.5 cm	568/654 g
C6i Carbon	4-sec.	28 mm	47.5 cm	2.5 cm	171.5 cm	1,627 kg	12 kg	53.5-143 cm	89.5-179.5 cm	681/804 g

\*Design and specification are subject to real product.

# Manuel du trépied professionnel C5i/C6i Carbon

Merci d'avoir choisi nos produits. Veuillez lire attentivement avant l'utilisation.

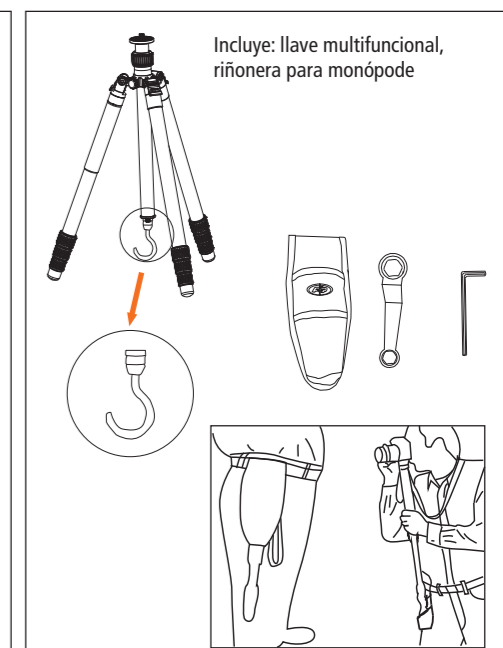
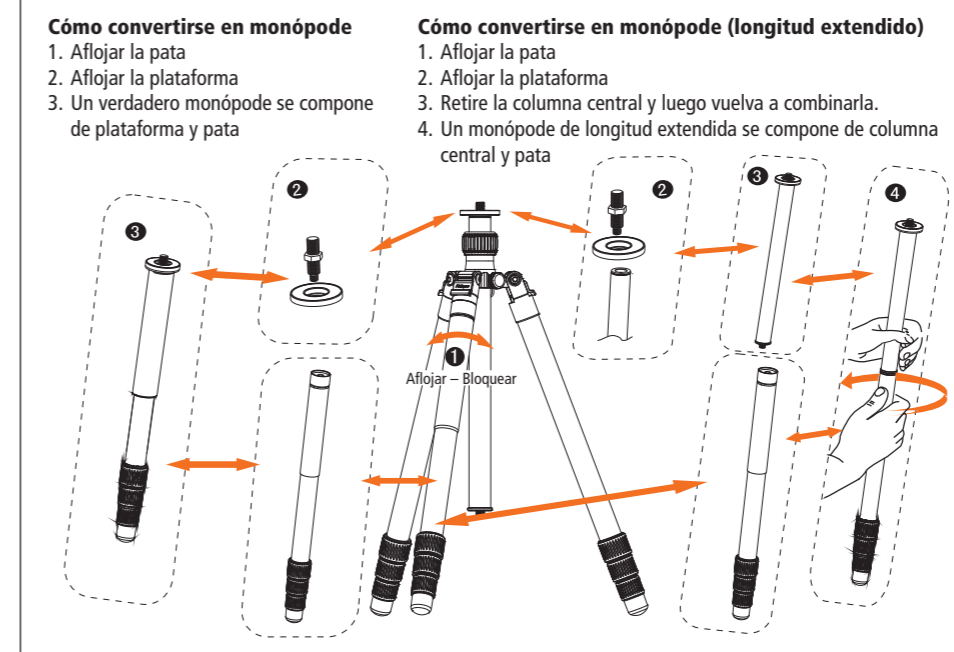
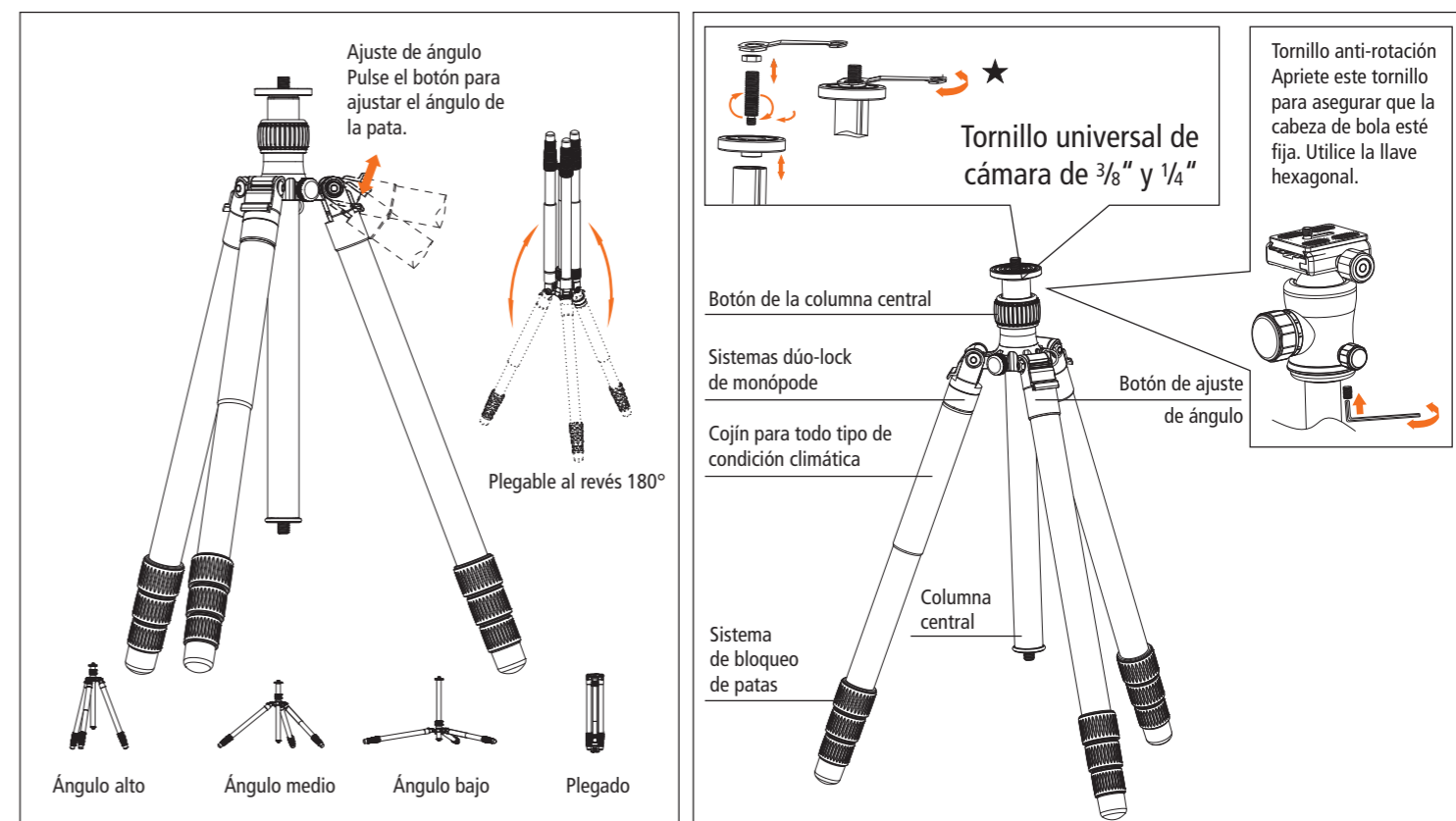


N° de modèle	Section	D max.	Plié	H Min.	H Max.	Poids	Charge	Hauteur Monopied petit	Hauteur Monopied grand	Poids
C5i Carbon	4-sec.	25 mm	43,5 cm	2,5 cm	157,5 cm	1.335 kg	8 kg	49-131,5 cm	82-164,5 cm	568/654 g
C6i Carbon	4-sec.	28 mm	47,5 cm	2,5 cm	171,5 cm	1.627 kg	12 kg	53,5-143 cm	89,5-179,5 cm	681/804 g

\*Le design/les caractéristiques fait référence au produit d'origine.

# Manuel du trépied professionnel C5i Carbon/C6i Carbon

Gracias por elegir nuestros productos. Leer cuidadosamente antes de utilizar.

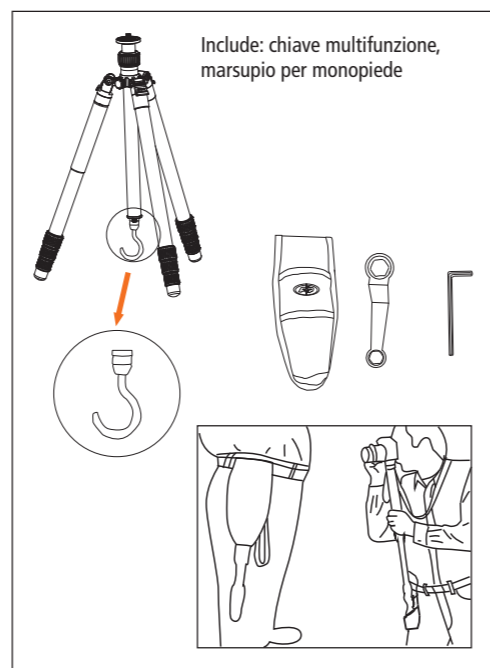
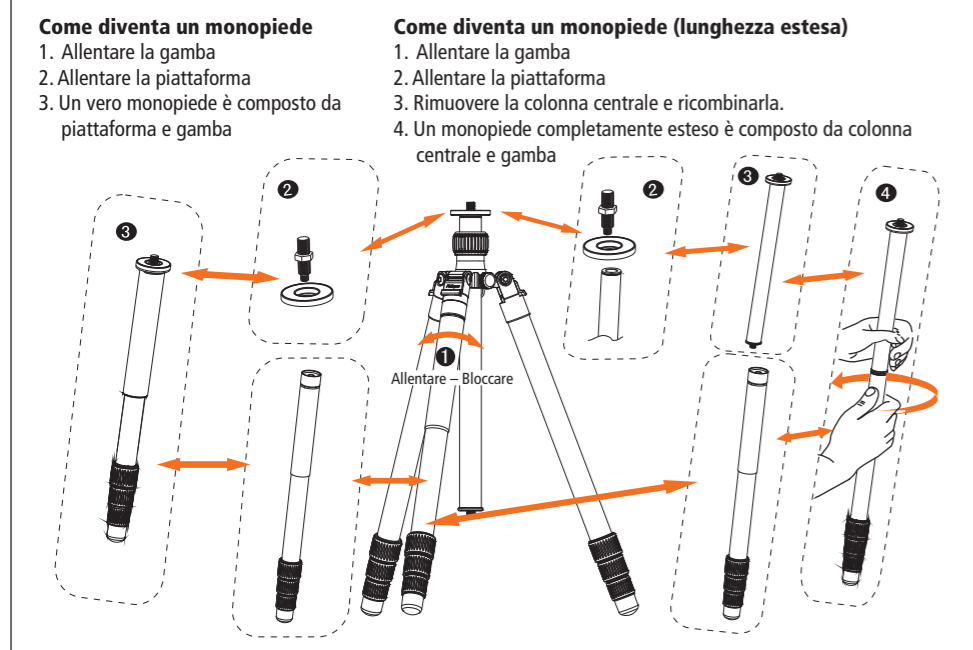
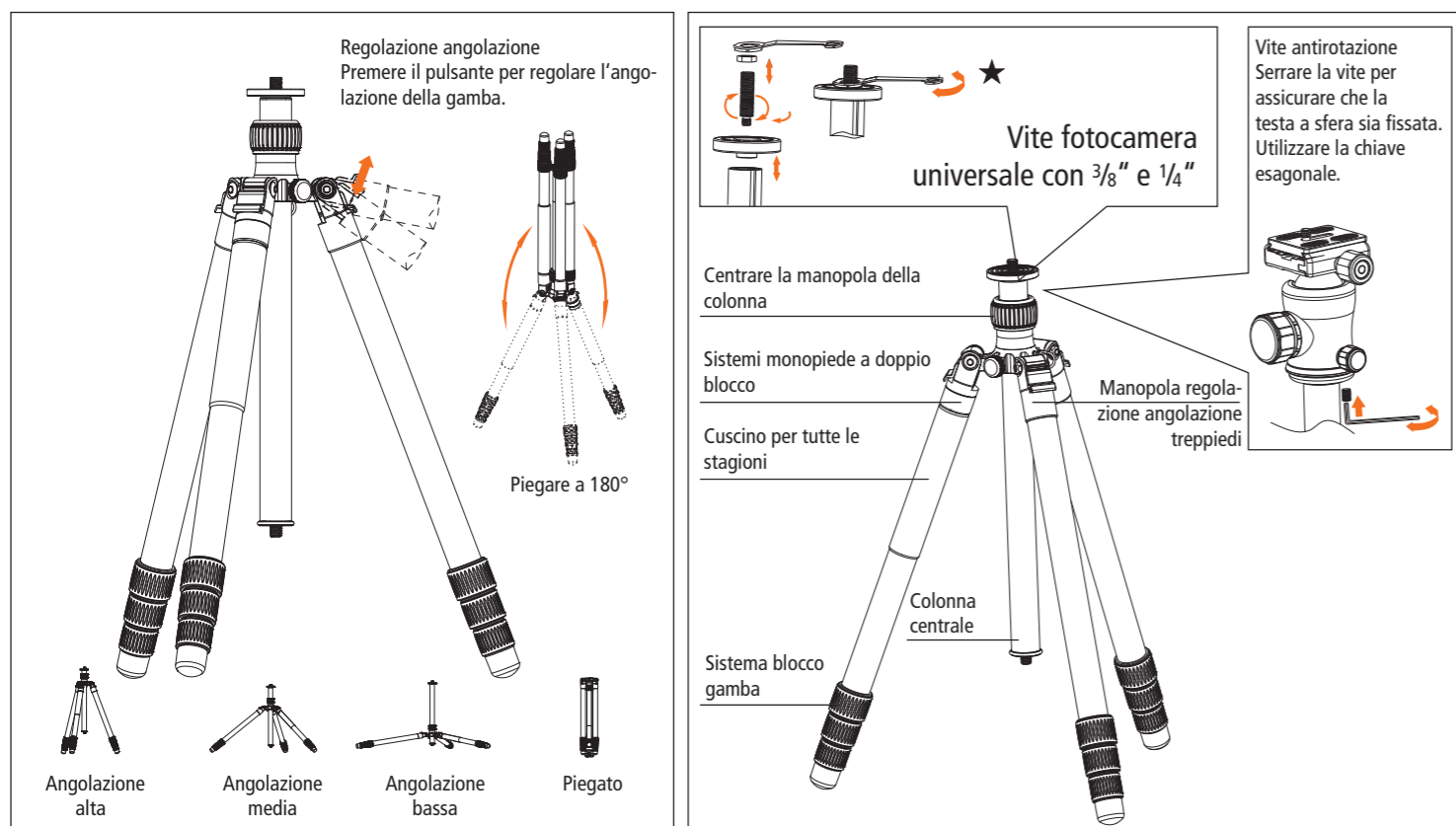


Modelo n°	Sección	D. máx.	Plegado	A mín.	A máx.	Peso	Carga	Altura Monopie pequeño	Altura Monopie gran	Peso
C5i Carbon	4-sec.	25 mm	43,5 cm	2,5 cm	157,5 cm	1.335 kg	8 kg	49-131,5 cm	82-164,5 cm	568/654 g
C6i Carbon	4-sec.	28 mm	47,5 cm	2,5 cm	171,5 cm	1.627 kg	12 kg	53,5-143 cm	89,5-179,5 cm	681/804 g

\*Diseño y especificaciones según el producto real.

# Manuale per treppiede professionale C5i Carbon/C6i Carbon

Grazie per aver scelto i nostri prodotti. Leggere attentamente prima dell'uso.

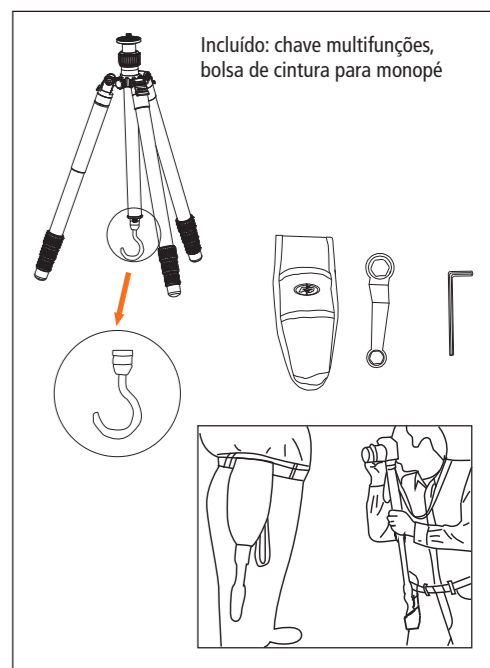
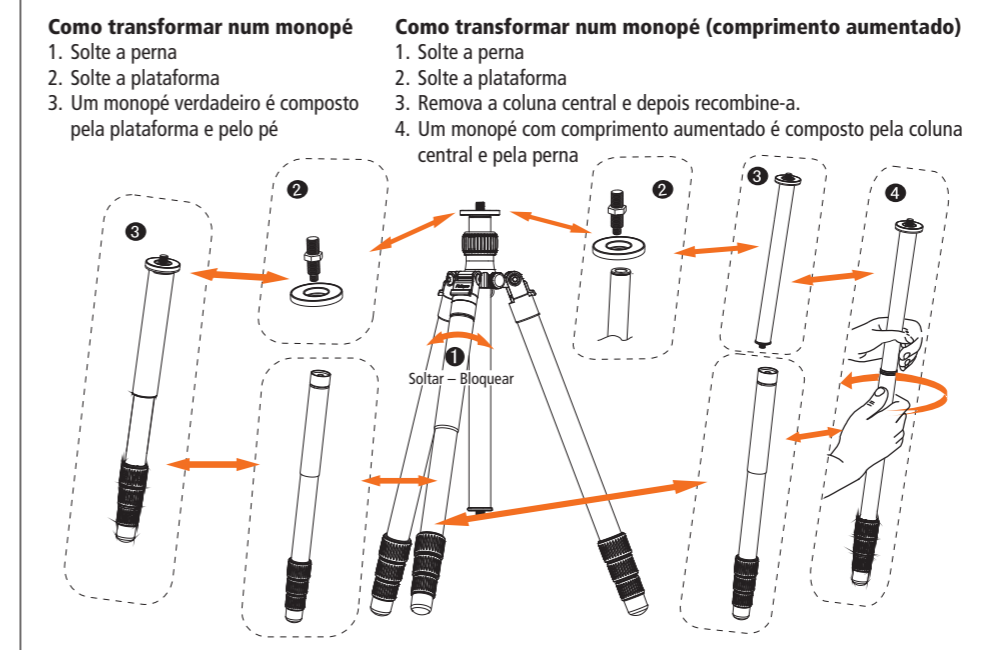
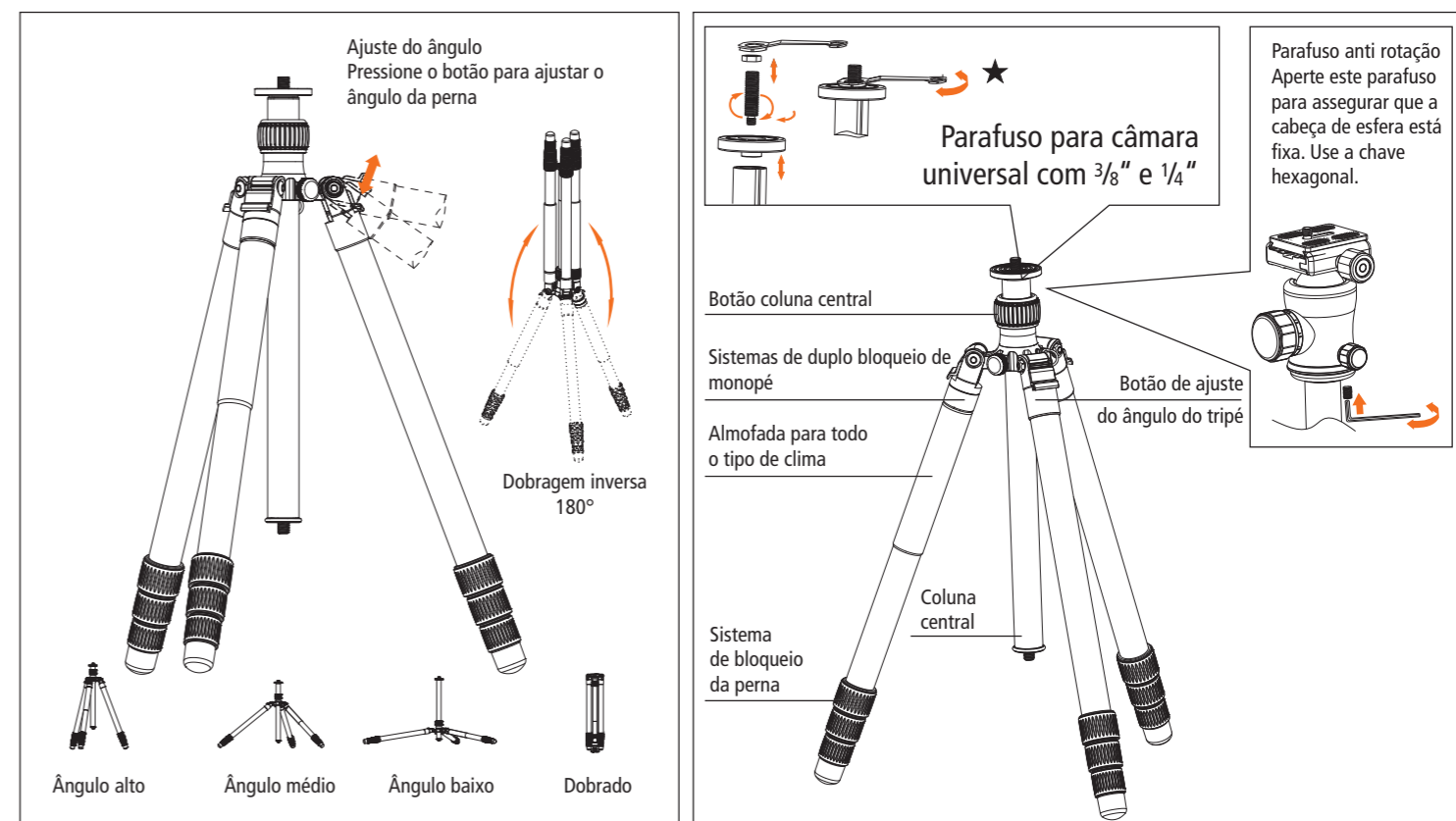


N. modello	Sezioni	D Max	Piegato	A min.	A max.	Peso	Tragkraft	Altezza Monopiede piccolo	Altezza Monopiede grande	Peso
C5i Carbon	4-sec.	25 mm	43,5 cm	2,5 cm	157,5 cm	1.335 kg	8 kg	49-131,5 cm	82-164,5 cm	568/654 g
C6i Carbon	4-sec.	28 mm	47,5 cm	2,5 cm	171,5 cm	1.627 kg	12 kg	53,5-143 cm	89,5-179,5 cm	681/804 g

\* Il modello e le specifiche sono soggetti a variazioni in funzione del prodotto reale.

# Manual do tripé profissional C5i Carbon/C6i Carbon

Obrigado por escolher os nossos produtos. Por favor, leia cuidadosamente antes de usar.

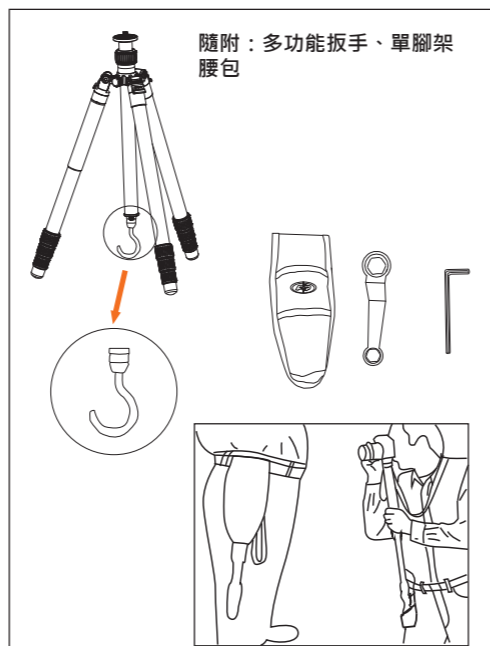
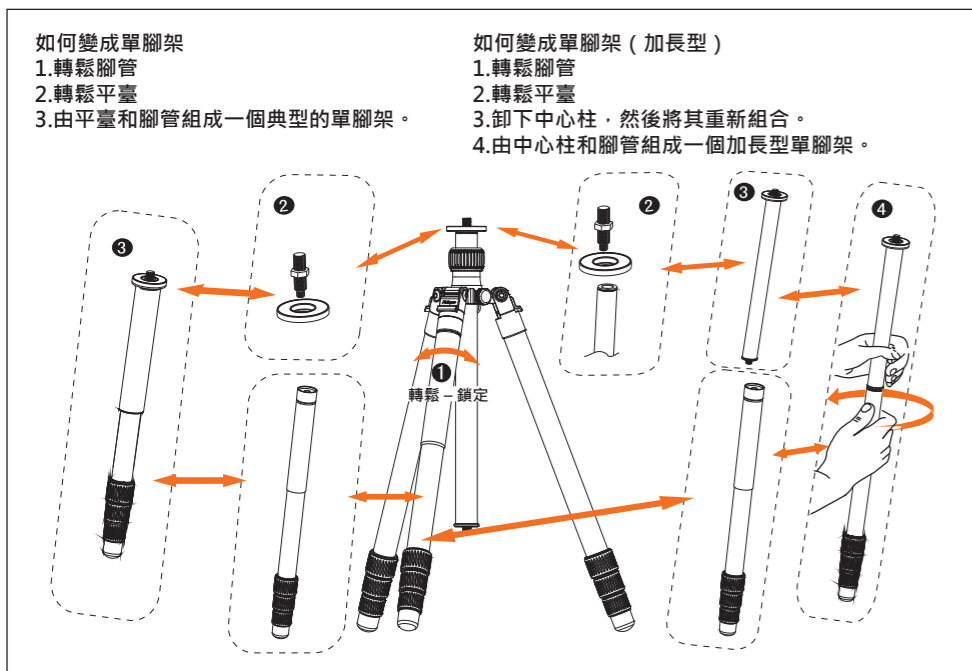
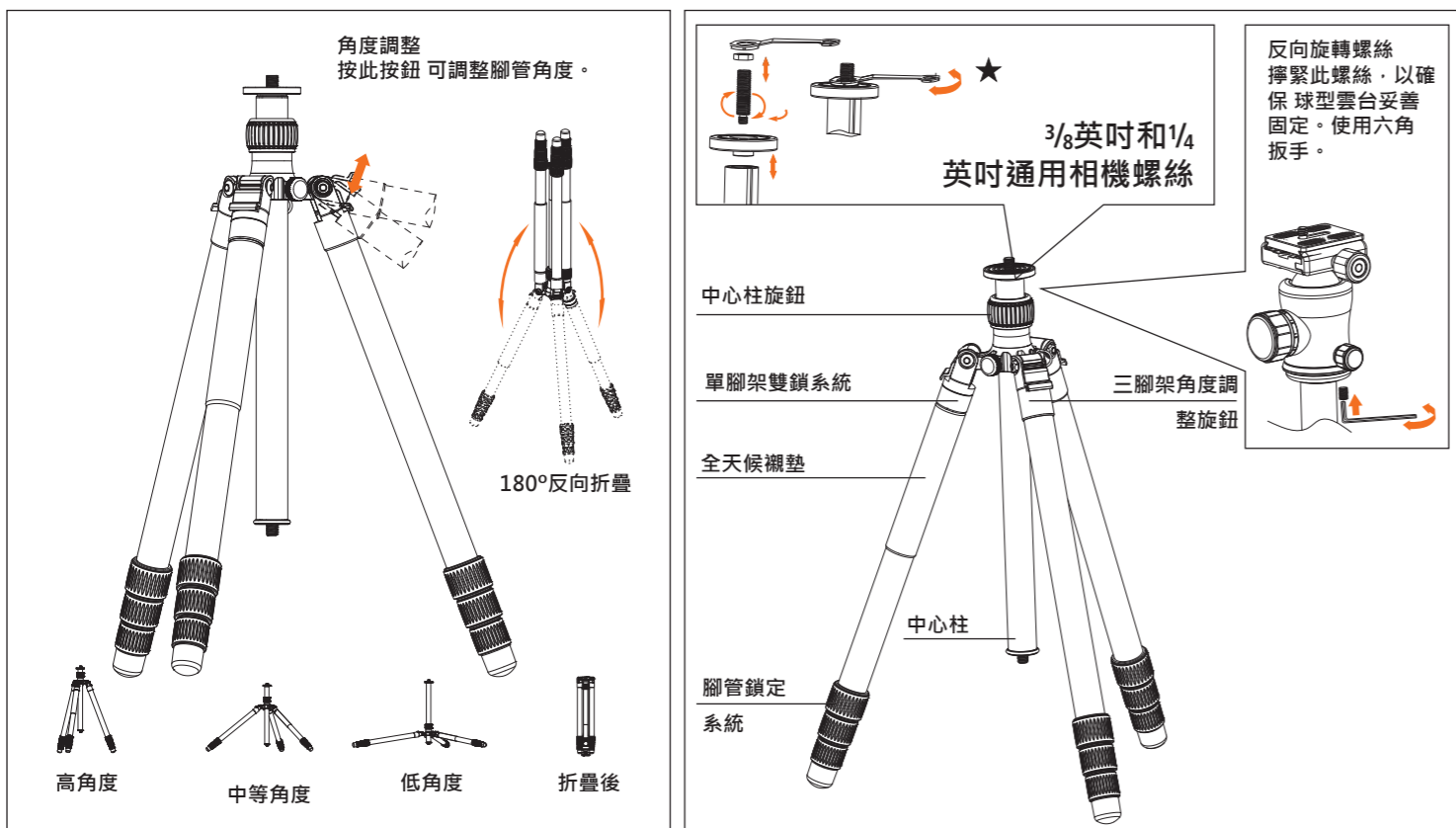


Nº do modelo	Secção	Diâm. máx.	Dobrado	Alt. min.	Alt. máx.	Peso	Carga	Alteza Monopé pequeno	Alteza Monopod grande	Peso
C5i Carbon	4-sec.	25 mm	43,5 cm	2,5 cm	157,5 cm	1.335 kg	8 kg	49-131,5 cm	82-164,5 cm	568/654 g
C6i Carbon	4-sec.	28 mm	47,5 cm	2,5 cm	171,5 cm	1.627 kg	12 kg	53,5-143 cm	89,5-179,5 cm	681/804 g

\* O design e as especificações podem variar de acordo com o produto real.

# 使用說明

感謝您選擇我們的產品，請在使用前仔細閱讀本說明。



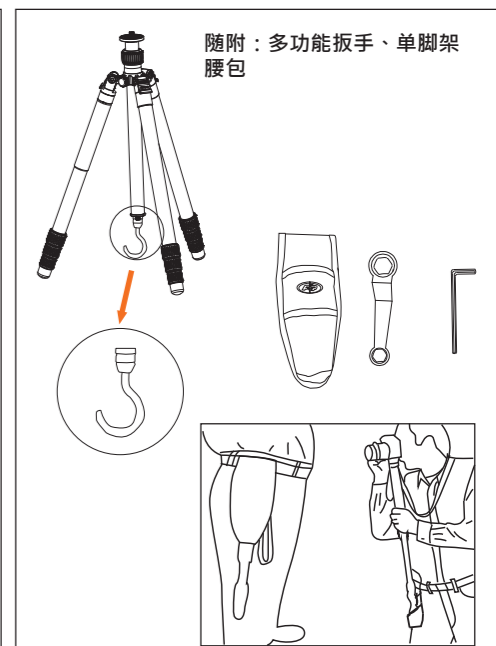
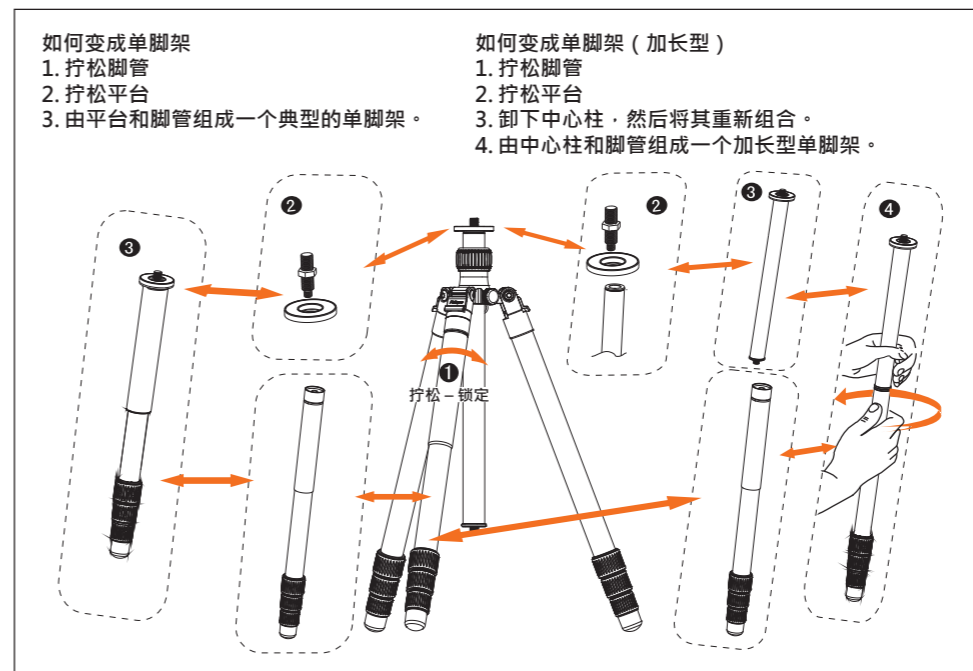
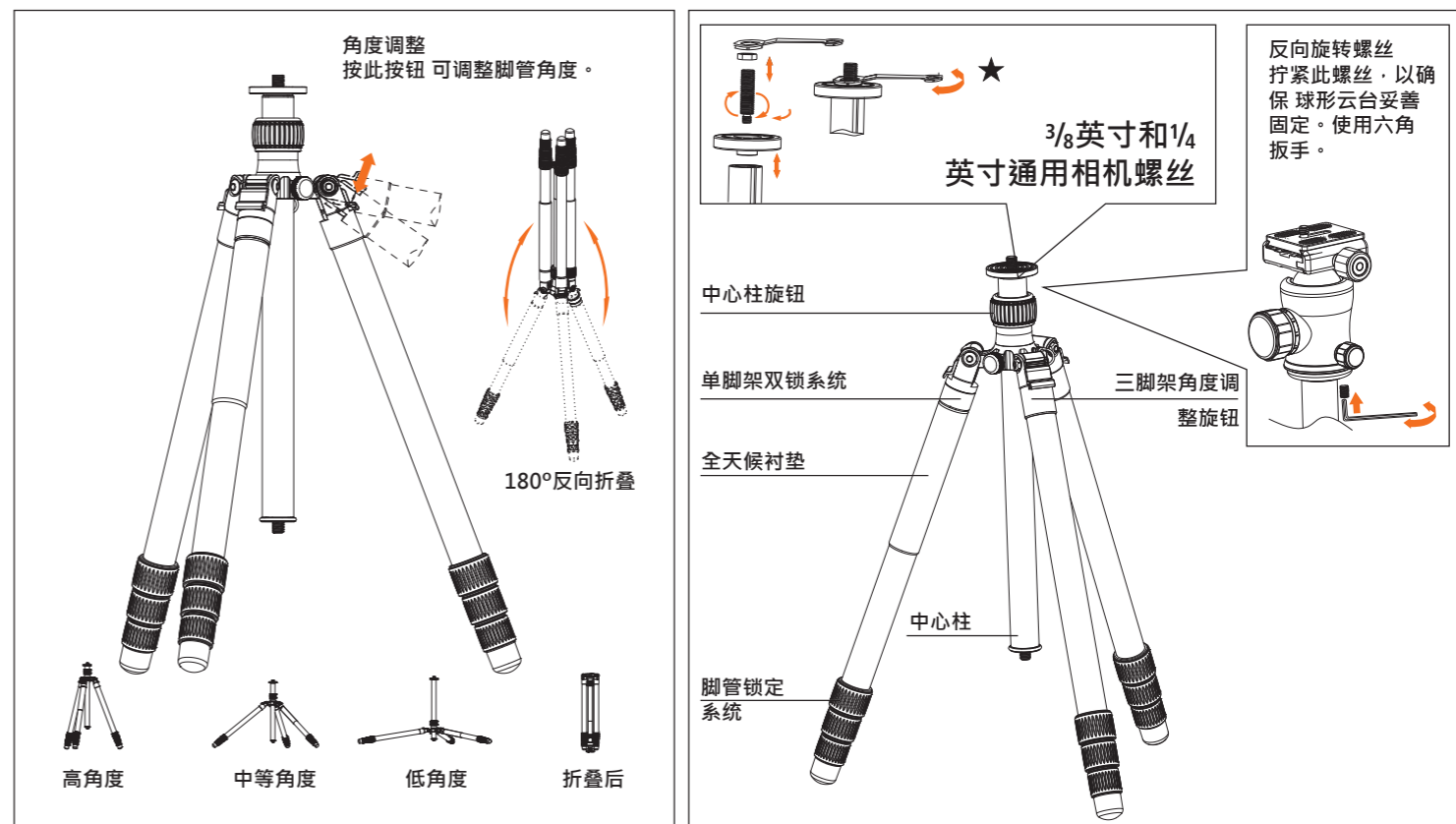
(CT)

型號	腳管節數	最大直徑	折疊後	最小高度	最大高度	重量	承重	高度 單腳架小	高度 單腳架大	重量
CSI Carbon	4-sec.	25 mm	43.5 cm	2.5 cm	157.5 cm	1,335 kg	8 kg	49-131.5 cm	82-164.5 cm	568/654 g
CGi Carbon	4-sec.	28 mm	47.5 cm	2.5 cm	171.5 cm	1,627 kg	12 kg	53.5-143 cm	89.5-179.5 cm	681/804 g

\*設計和規格以實際產品為準。

# 使用说明

感谢您选择我们的产品，请在使用前仔细阅读本说明。



(CS)

型号	脚管分段	最大直径	最大直径	最小高度	最大高度	重量	承重	高度 单脚架小	高度 单脚架大	重量
CSI Carbon	4-sec.	25 mm	43.5 cm	2.5 cm	157.5 cm	1,335 kg	8 kg	49-131.5 cm	82-164.5 cm	568/654 g
CGi Carbon	4-sec.	28 mm	47.5 cm	2.5 cm	171.5 cm	1,627 kg	12 kg	53.5-143 cm	89.5-179.5 cm	681/804 g

\*设计和规格以实际产品为准。

## For Europe

**Distribution** Rollei GmbH & Co. KG  
In de Tarpen 42, D-22848 Norderstedt

**Service Hotline:** +49 40 270750270

**Return Service:** Rollei Service Deutschland  
Denisstraße 28a, D-67663 Kaiserslautern



[www.rollei.de/social](http://www.rollei.de/social)

[www.rollei.com/social](http://www.rollei.com/social)

## For Asia

分銷: Rollei HK Limited  
香港九龍觀塘成業街 7 號  
寧晉中心 17/F D2

Tel +852 2377 9023

Fax +852 2366 8091

Email [info-hk@rollei.com](mailto:info-hk@rollei.com)

分銷: Rollei HK Limited  
香港九龍觀塘成業街 7 號  
寧晉中心 17/F D2

Tel +852 2377 9023

Fax +852 2366 8091

Email [info-hk@rollei.com](mailto:info-hk@rollei.com)



[www.cn.rollei.com/social](http://www.cn.rollei.com/social)