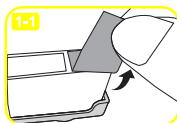


# Installation Instructions

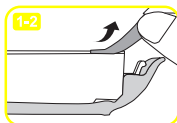
The picture does not match the actual products,  
please refer to the actual products.

## Steps:

1.Remove the sealing tape

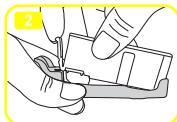


Ordinary ink cartridges

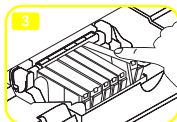


Patent ink cartridges

2.Open the shelter slowly

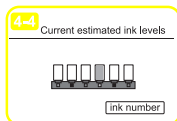
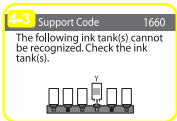
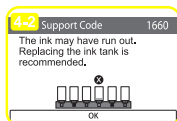
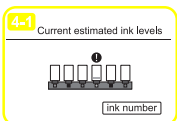


3.Install the ink cartridges

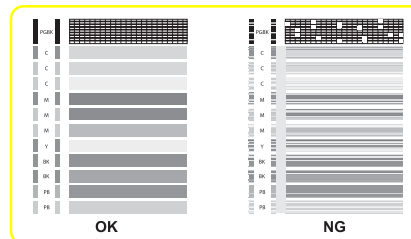


4.Please reinstall the new ink cartridge if the printer prompts “ ! ” (figure 4-1)、 “ X ” (figure 4-2) or “ink tank(s) cannot be recognized” (figure 4-3). The full level of ink means you install correctly (figure 4-4).

⚠ Please don't print anything before the printer display full level of ink.



5.Please check the nozzle after installing the ink cartridge, you should clean the print head if the print line discontinuity. The ink cartridges installed correctly until you can see the good print quality as below OK picture.



## Remarks:

- 1.Please install the ink cartridges immediately after opening the shelter.
- 2,Do not touch the chip by hand.
- 3,Do not squeeze the ink cartridge after opening the shelter.

404004002082 A 100X150