

Thank you very much for purchasing our ATTACK SHARK product, and hope it can bring you a new operation and feeling. For more operations, you can go to the official website to download the driver. At the same time, we look forward to getting your valuable suggestions on our products, and we will continue to provide you with better products and services.

### Product introduction

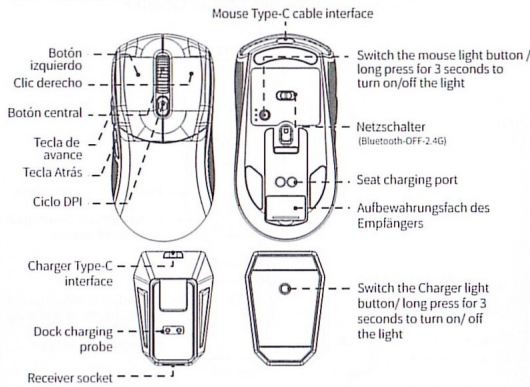
1. Product model: X2PRO
2. Product interface type: USB-Type-C
3. Product connection method: USB, 2.4G, Bluetooth
4. Product optical sensor: original phase 3212
5. Lighting effect: 11 kinds
6. Transmission frequency: 2402MHz—2480MHz
7. Return rate (HZ): Bluetooth-115hz, 2.4G-125hz, wired-250hz
8. Frame rate (IPS): 30IPS
9. Maximum acceleration (G): 10G
10. Refresh rate (FPS): 4000FPS
11. DPI: 1200 (Default ) -1600 -2000 -2400-4000
12. Battery capacity: 500mA polymer battery
13. Charging current: 280mA
14. Charging voltage: 5V
15. Product size: 126.3\*62.5\*38.4mm
16. Support operating system: XP, Win7, Win8, win10, Mac, etc.

### Tips:

1. Sleep mode (Sleep wake-up mode: first and second sleep mobile wake-up, third-level sleep button wake-up)
  - (1) The mouse enters the first level of sleep immediately after it stops working
  - (2) The mouse will enter the secondary sleep mode if there is no operation for 2 minutes
  - (3) The mouse will enter the third-level sleep mode if there is no operation for 20 minutes

2. Charging indication: red light on the charging wheel/full charge off
3. Hardware connection: Insert the USB plug of the product into the port of USB 1.1 or above (when the product is used for the first time, a prompt for automatic hardware installation will pop up in the lower right corner of the computer)

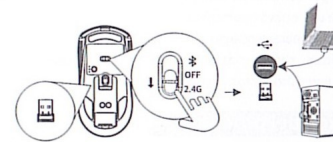
### Button function description



### Tips:

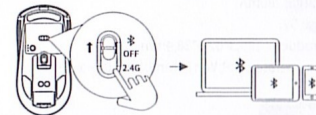
1. When the mouse is placed on the charger for charging, the dynamic white light of the charger will run from bottom to top, and it will go out when fully charged.
2. The default neon light will be turned off after 10 minutes when the charger is powered on.
3. In wired mode, plug in the cable, that is, the default wired mode and charging.

### 2.4G installation steps and instructions:



When you want to use the 2.4G channel of the mouse, turn the power switch to the 2.4G position, then take out the mouse 2.4G receiver, and plug the receiver into a free USB port of the computer, then the computer will automatically install the configuration software. When the computer prompts that the installation is complete and ready to use, the mouse can be connected to the computer. If there is no response after plugging in the receiver, you need to replace another USB port. At this time, the computer will automatically match the code and install the corresponding adaptation software. Generally, the computer will prompt: the installation is complete and can be used, which means that the mouse is the same as the computer 2.4G. The code pairing was successful.

### Bluetooth installation steps and instructions:

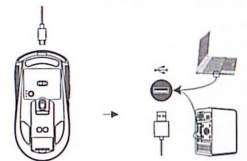


1. Turn the power switch of the mouse to the Bluetooth-BT position and press the left, middle and right buttons of the mouse for 4 seconds. The blue light flashes rapidly at the scroll wheel, and then turn on the Bluetooth of the mobile phone. When "X2PRO MOUSE" appears on the mobile phone, click directly Select the connection, so that the Bluetooth of the mobile phone and the mouse can be connected.

2. The mouse bluetooth is connected to the computer and the code installation steps and use: Please turn the power switch of the mouse to the BT position, and first click (start) on the computer to select "Control Panel" and then click "Add Device" and the computer will appear to add devices interface, when the mouse icon appears on the computer interface, click "X2PRO MOUSE" again, then select "Add Device" and follow the prompts, then the computer and the mouse Bluetooth will be connected. Different systems have different installation methods.

### Wired connection

Use the included TYPE-C cable to connect to the computer. When the cable is plugged in, the mouse switches to wired mode, and the computer screen pointer can move when the mouse is moved, and the mouse can be used normally.



### Precautions

- ⚠ It is forbidden to immerse the mouse in liquid or spray the mouse with liquid
- ⚠ It is forbidden to use the mouse in high temperature and high humidity environment
- ⚠ Do not place the mouse in an open flame
- ⚠ Violence against pressing the mouse is prohibited
- ⚠ Do not disassemble the mouse

### Packing list

Mouse\*1 2.4G Receiver\*1 Wire\*1 Manual\*1 Charging base\*1