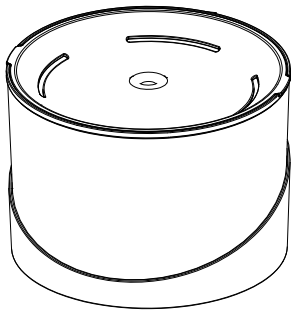


# Pet Water Fountain

## User Manual

JC-A15



Please read this manual carefully before using the product and keep it properly

# Contents

Basic Parameters .....	1
Part Names.....	2
<b>Operation Guide .....</b>	<b>3</b>
Description of LED Control Switch .....	5
Description of water level sensor and light indication .....	5
Instructions of Filter.....	6
Description of Water Pump Structure .....	6
<b>Cleaning Steps for Water Pump .....</b>	<b>6</b>
Pet water fountain' s maintenance.....	7
Notice .....	7
FAQ.....	7
<b>Abnormal phenomena and troubleshooting .....</b>	<b>8</b>

## Basic Parameters

Product Name: Pet Water Fountain

Power Input: DC 5V 1A

Specifications of Water Pump: DC Water Pump

Power Consumption:1W

Product Size: 18.6(Length) × 18.6(Width) × 13(Height)(CM)

Packing Size: 20(Length) × 19(Width) × 15.5(Height)(CM)

Package Weight: 0.9KG

Power Cord Length:about 1.8m

Shell Material:Environmentally-friendly ABS Resin

Purification Material: Water-Purification Food Grade Coconut

Shell Activated Carbon

Water Storage Capacity: 2.2 L

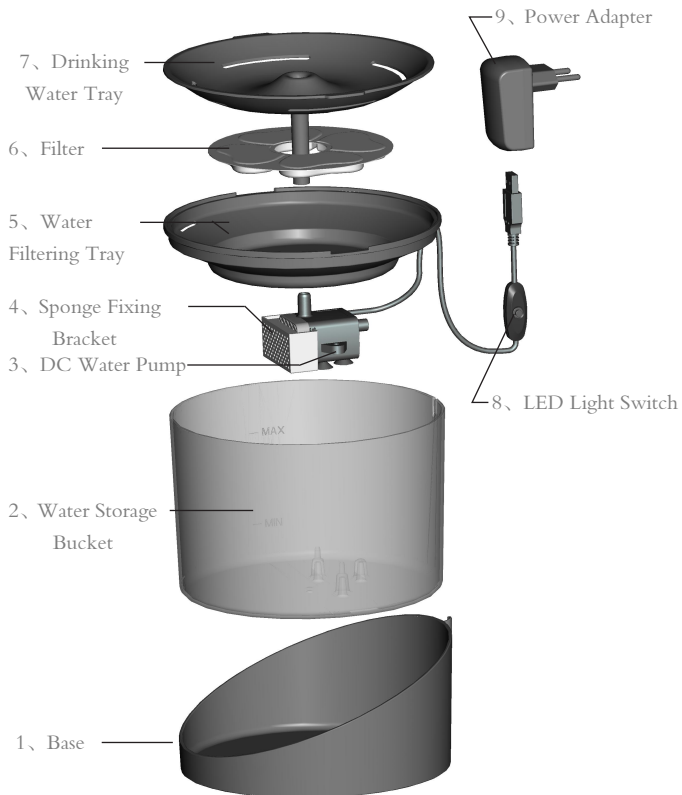
Certification of Water Pump: IPX8

Certification of complete machine:   

Certification of Power Supply:   

Environmental Protection Standard: 

# Part Names

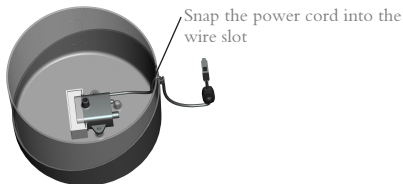




## Operation Guide

### Step 1: Install the water pump

Take out the water pump and the sponge bracket, align the round holes on both sides of the water pump with the bottom pillars of the water storage bucket and put into it (watch out for the direction), and press the front side of the water pump with your hands to ensure that the pump is firmly held and fixed at the bottom of the water bucket, then snap the power cord into the wire slot and fix it.



### Step 2: Fill the water storage bucket with water

Put an appropriate amount of pet drinking water in the water storage bucket, and the water level should not exceed the maximum water level "MAX" (the maximum water capacity is about 2.2 L). When the water level is lower than the water level line of "MIN", the water pump will stop working, please replenish water in time.

Please do not exceed the maximum water level of 2.2 L

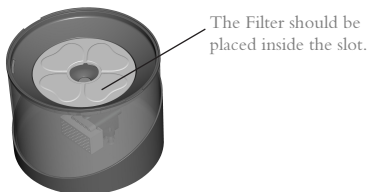


### Step 3: Install the water filtering tray above the water storage bucket



#### Step 4: Install the Filter

Rinse the Filter repeatedly with clean water for several times, and then install the cleaned Filter in the groove which is in the middle of the water filtering tray.



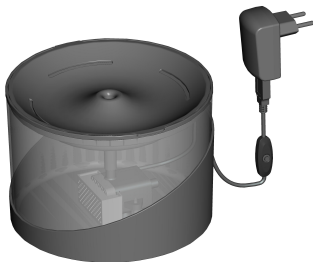
#### Step 5: Install the drinking water tray

Install the drinking water tray above the water filtering tray, and please make sure that the pipe port of the drinking water tray is aligned with the outlet of the water pump.



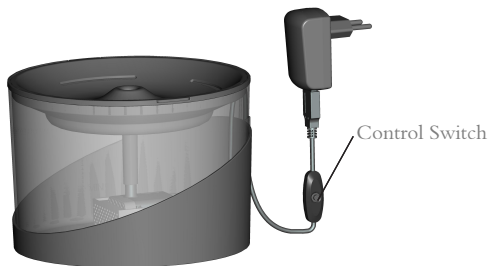
#### Step 6: Connect the power

Plug the USB interface into the power adapter and connect the power.



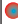


## Description of LED Control Switch

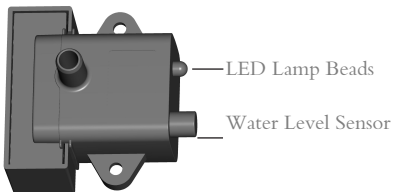
The power cord is equipped with an LED Control Switch, which can control the LED light to turn on or off. After the LED light is on, it is easier to observe the water level through the semi-transparent water storage bucket while it is convenient to timely replenish water. Besides, it can guide pets to drink water at night, and at the same time, it can avoid the owner accidentally kicking the drinking fountain at night.



## Description of water level sensor and light indication

The water pump is equipped with a water level sensor. When the water level is too low, the water pump will automatically carry out the power-off protection, and it will automatically start to work after replenishing water. At the same time, it also has a light indication function. When it is in normal working state, the color light will be always on. When it is close to the “MIN” water level, the red light will flash; when the water level is below the “MIN” water level and the water pump stops working, and the red light will be always on.

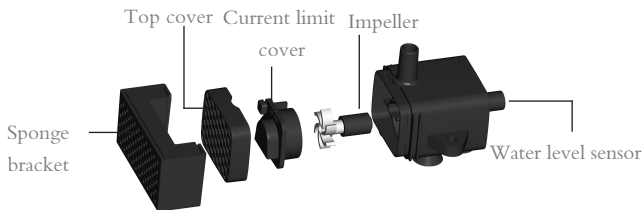
	Normal working state
	Reminder of water shortage
	Water pump stops working



## Instructions of Filter

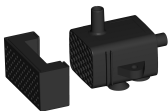
1. When replacing the filter, please use a filter with a diameter not exceeding 125mm (4.92in) and a thickness not exceeding 8mm (0.31in).
2. In order to ensure a better filtering effect, it is recommended to replace the filter every 20 to 30 days.
3. Before using the filter, please rinse it several times in clean water.

## Description of Water Pump Structure



## Cleaning Steps for Water Pump

In order to ensure that the water pump can work normally and ensure its service life, the water pump needs to be cleaned regularly. There is a cylindrical protrusion at the back of the pump, which is equipped with water shortage and power-off protection induction device. Do not knock or break it when cleaning to avoid functional damage.



① Remove the sponge holder



② Remove the top cover



③ Remove the current-limit cover



④ Remove impeller (with tweezers)



⑤ Rinse (clean with a small brush)



⑥ Finish (sponge upwards)

## Pet water fountain's maintenance

Before cleaning and maintenance, the power must be cut off.

Please use clean water or a cleaning sponge moistened with a diluted neutral detergent to gently clean it.

The filter sponge can only be cleaned with clean water, not detergent.

Do not use hot water, gasoline, alcohol and organic solvents to clean this product.

### Notice

Please use it in an indoor environment.

Do not allow children to use this equipment.

Please place this product on a stable ground, otherwise it may affect the normal use of the product.

Do not immerse the power adapter in water.

Please place the power adapter higher than the drinking fountain's body to prevent water from splashing into the plug.

This machine uses 5V/1A or 5V/2A power adapter.

Do not allow pets to bite the power cord.

To prevent liquid from dripping and splashing, please keep this product away from other electrical appliances and extension socket.

It is recommended to place a cushion under this product to reduce noise and splashing water.

### FAQ

#### **How often do I need to replace the filter?**

Depending on the user's frequency of use, it is generally recommended to replace the filter every 20 to 30 days.

#### **Why are black particles found in the pet water fountain?**

This is a normal situation. The activated carbon filter cartridge will drop some fine carbon particles during transportation. Therefore, before using the filter element, the customer needs to repeatedly wash the front and back of the filter element with water for several times to rinse off the activated carbon particles.

#### **In general, how often does it take to clean the pet water fountain?**

It is recommended to clean it once a week. You don't need to use detergent when cleaning, just use a rag and clean water.

#### **Does the water fountain consume a lot of electricity every day?**

This product uses ultra-low power water pumps, with an average power consumption of 1W, calculated on the unit of 24 hours of continuous work per day, the power consumption is about 0.8 kWh per month, and the total power consumption is about 10 kWh per year.

## Abnormal phenomena and troubleshooting

Note: The following judgments and inspections is used for common abnormal phenomena, if simple treatment cannot be eliminated, please contact customer service for consultation.

Phenomenon	Cause of failure	Troubleshooting method
Water pump stops working	Impurities and hair blockage inside the pump	Please clean the water pump according to the water pump's cleaning steps. (Note: after cleaning the water pump, please install the sponge and sponge bracket to avoid impurities and hair entering the inside of water pump again which causes it not to work)
	Water level is too low	Please replenish water in time
	The power adapter cannot be used	Please replace it with a new power adapter (5V/1A or 5V/2A)
	The capacitor burned out (under the situation of three steps above that do not solve the problem)	It needs to resume buying the water pump for replacement
The noise of the pump becomes louder	Impurities and hair blockage inside the pump	Please clean the water pump according to the water pump's cleaning steps. (Note: after cleaning the water pump, please install the sponge and sponge bracket to avoid impurities and hair entering the inside of water pump again which causes it not to work)
	Abrasion of steel shaft	It needs to resume buying the water pump for replacement
Water flow becomes weaker	Water level is too low	Please replenish water in time
	Impurities and hair blockage inside the pump	Please clean the water pump according to the water pump's cleaning steps. (Note: after cleaning the water pump, please install the sponge and sponge bracket to avoid impurities and hair entering the inside of water pump again which causes it not to work)
	Sponge and top cover used to absorb impurities	Please clean or replace the sponge and clean the top cover.