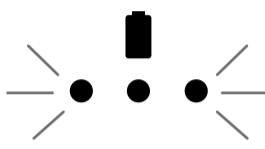
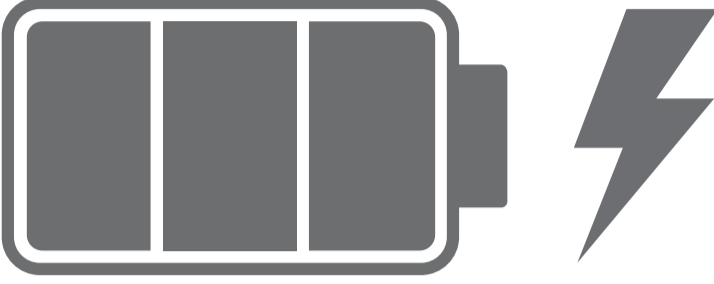


**ADDON T3**

Page 1-2:  
SE: Snabbstartsguide  
EN: Quick Start Guide  
DE: Schnellstart-Anleitung

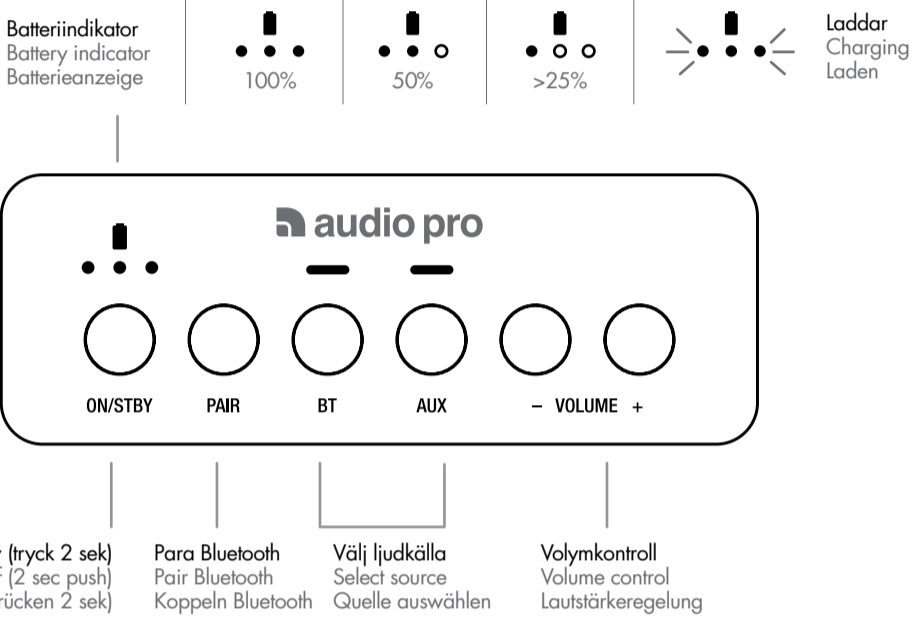
Page 3-4:  
FR: Guide de démarrage rapide  
ES: Guía de inicio rápido  
IT: Guida di avvio rapido  
FI: Pikaopas

FÖRE ANVÄNDANDE | BEFORE USING | VOR DER VERWENDUNG

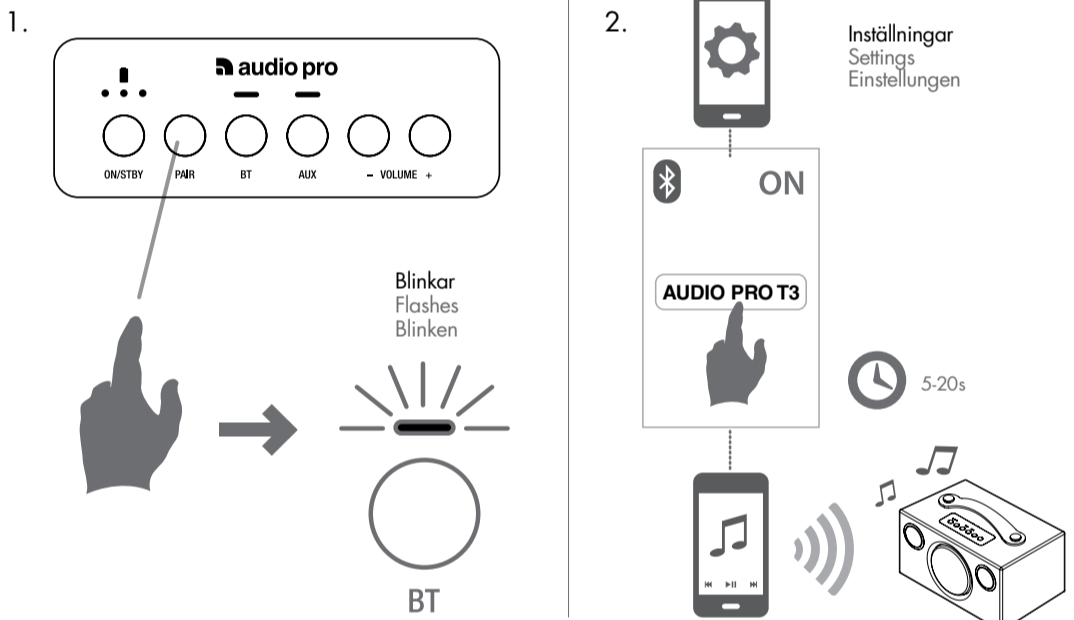


Ladda batteriet fullt innan du använder högtalaren första gången.  
Charge the battery fully before using the speaker first time.  
Laden Sie den Akku vollständig, bevor Sie Lautsprecher ersten Mal verwenden.

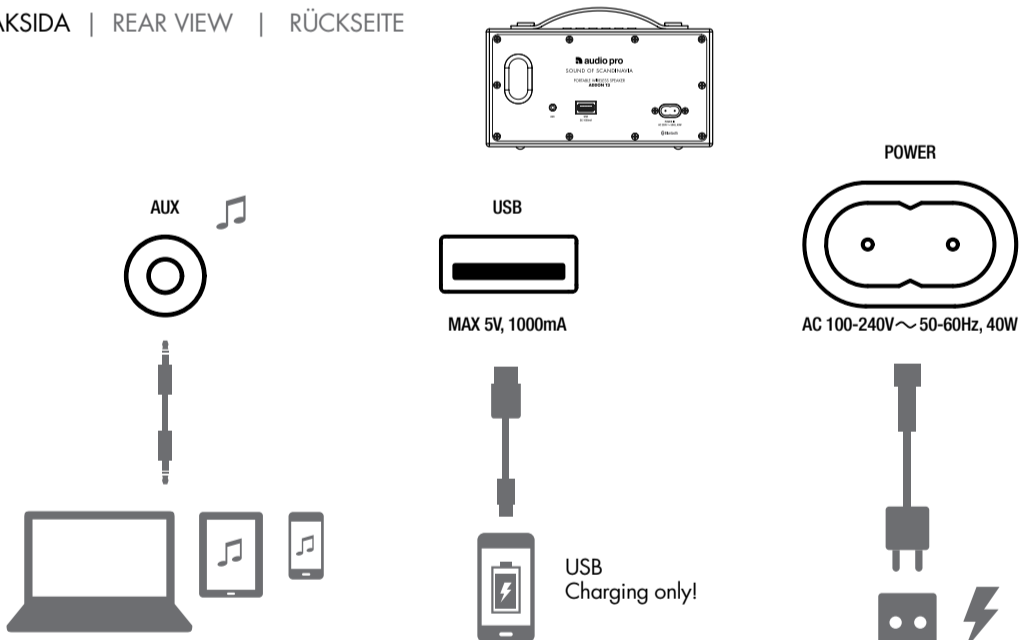
KONTROLLER | CONTROLS | SCHALTAFEL



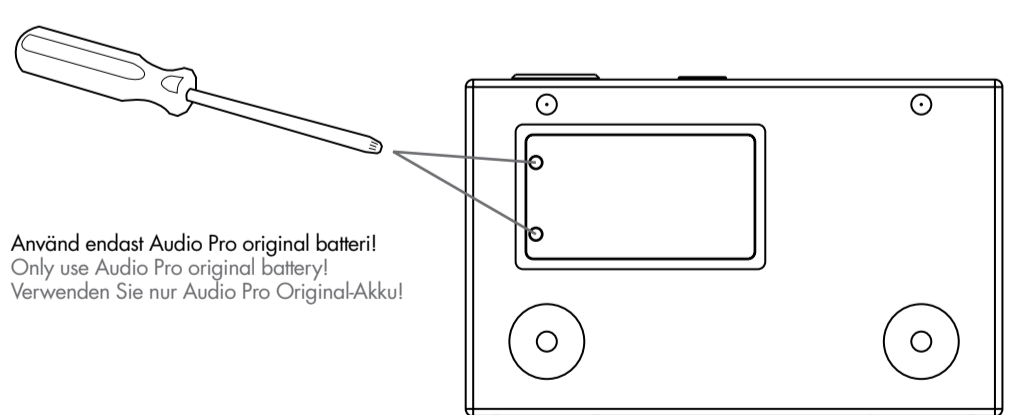
PARA | PAIR | KOPPELN



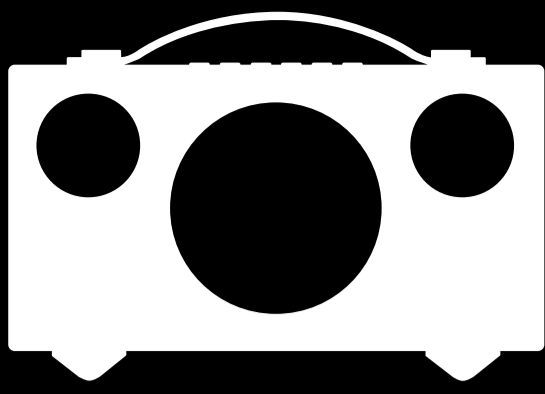
BAKSIDA | REAR VIEW | RÜCKSEITE



BYTA BATTERI | CHANGE BATTERY | BATTERIE WECHSELN



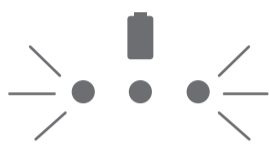
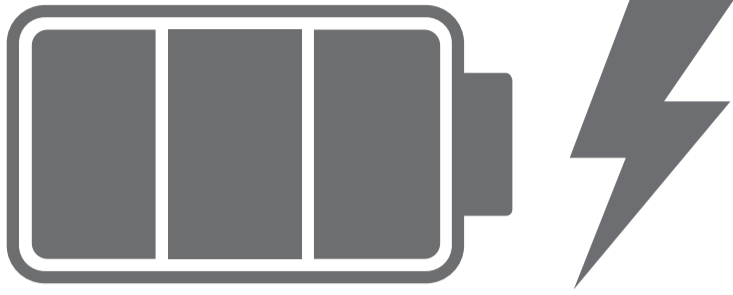




## ADDON T3

FR: Guide de démarrage rapide  
 ES: Guía de inicio rápido  
 IT: Guida di avvio rapido  
 FI: Pikaopas

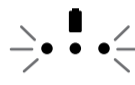
ENNEN KUIN KÄYTÄT | AVANT D'UTILISER | ANTES DE UTILIZAR | PRIMA DI UTILIZZARE



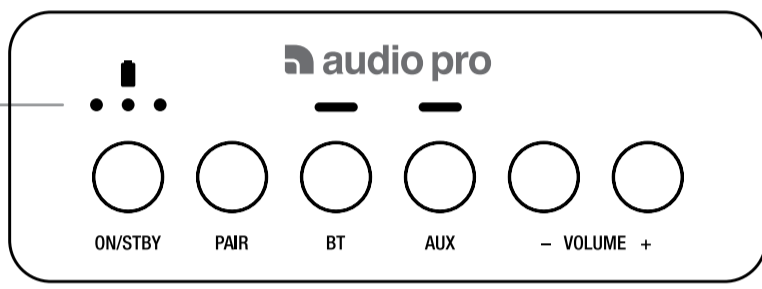
Lataa akku täyteen ennen kaiuttimen ensimmäistä kertaa.  
 Charger complètement la batterie avant d'utiliser le haut-parleur la première fois.  
 Cargue la batería totalmente antes de utilizar el altavoz por primera vez.  
 Caricare completamente la batteria Prima di utilizzare l'altoparlante prima volta.

PAINIKKEET | BOUTONS | BOTONES | CONTROLLI

Akun merkkivalo  
 Indicateur de batterie  
 Indicador de la batería  
 Indicatore della batteria



Lataaminen  
 Charge  
 Carga  
 Carica



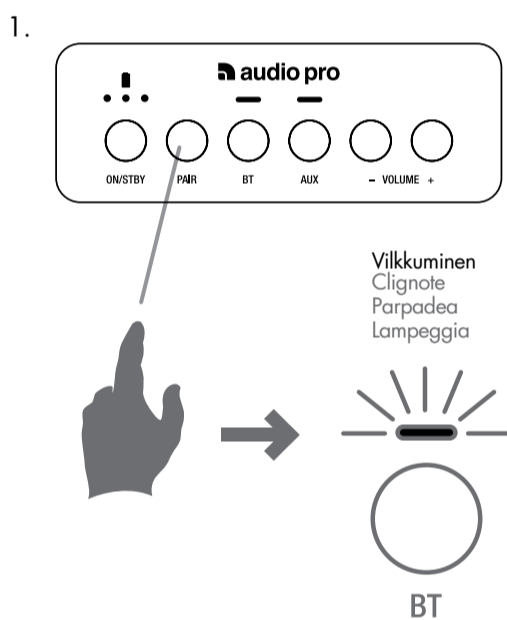
Päällä/valmiustila (paina 2s)  
 Marche/Veille (appuyer 2s)  
 Encendido / Modo espera (presione 2)  
 On/Standby (premere 2s)

Parinmuodostus Bluetoothiin  
 Pairear Bluetooth  
 Coppia Bluetooth

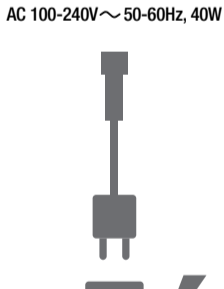
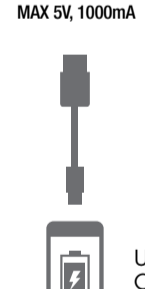
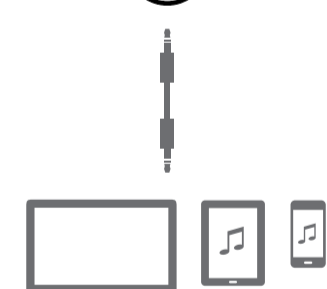
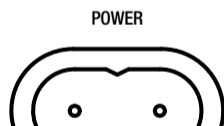
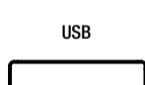
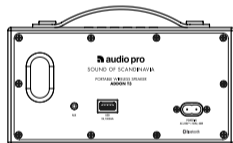
Valitse äänilähde  
 Sélection de la source  
 Seleccionar fuente de audio  
 Selezionare la sorgente

Äänenvoimakkuus  
 Contrôle du volume  
 Control de volume  
 Controllo del volume

PARINMUODOSTUS | APPAIREZ | PAREADO | COPPIA



TAKANÄKYMÄ | VUE ARRIÈRE  
 VISTA TRASERA | VISTA POSTERIORE



VAIHDA PARISTO | REMPLACER LA BATTERIE | CAMBIO DE BATERÍA  
 SOSTITUZIONE BATTERIA

