

★★★
TRISTAR
KP-6248 | DOUBLE HOT PLATE



★★★
TRISTAR
KP-6248 | DOUBLE HOT PLATE



★★★
**STAINLESS
STEEL**

2500W

★★★
TRISTAR
KP-6248 | DOUBLE HOT PLATE

★★★
**STAINLESS
STEEL**

2x

OFF

15.5cm

18.5cm

ON/OFF

ANTI SLIP FEET

2500W

Stylish stainless steel housing

2 Stepless thermostats

Overheat protection

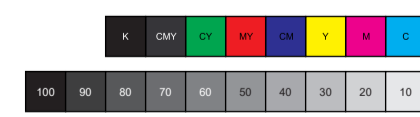
Diameter hot plate 1: 18,5 cm

Diameter hot plate 2: 15,5 cm

2 Power indication lights

Anti slip feet

Power of 2500W



565 x 108 x 264

★★★
TRISTAR
KP-6248 | DOUBLE HOT PLATE

EN | DOUBLE HOT PLATE

- Stainless steel housing
- 2 Burners
- Diameter hot plate 1: 18,5 cm
- Diameter hot plate 2: 15,5 cm
- 2 Adjustable thermostats
- 2 Power indication lights
- Overheat protection
- Anti-slip feet
- Power: 2500 Watt

NL | DUBBELE KOOKPLAAT

- RVS behuizing
- 2 Pitten
- Diameter kookplaat 1: 18,5 cm
- Diameter kookplaat 2: 15,5 cm
- 2 Regelbare thermostaten
- 2 Powerindicatielampjes
- Oververhitting beveiliging
- Antislipvoetjes
- Vermogen: 2500 Watt



8 713016 062482

FR | PLAQUE CHAUFFANTE

- Corps inox
- 2 Brûleurs
- Diamètre plaque chauffante 1: 18,5 cm
- Diamètre plaque chauffante 2: 15,5 cm
- 2 Thermostats réglables
- 2 Témoin lumineux de fonctionnement
- Protection contre la surchauffe
- Pieds anti-dérapants
- Puissance: 2500 Watts

DE | KOCHPLATTE

- Edelstahlgehäuse
- 2 Brenner
- Durchmesser Kochplatte 1: 18,5 cm
- Durchmesser Kochplatte 2: 15,5 cm
- 2 Regelbare Thermostate
- 2 Kontrolllampen
- Überhitzungsschutz
- Anti-Rutsch-FüÙe
- Leistung: 2500 Watt

ES | PLACA DE COCCIÓN DOBLE

- Exterior en acero inoxidable
- 2 Quemadores
- Diámetro placa de cocción 1: 18,5 cm
- Diámetro placa de cocción 2: 15,5 cm
- 2 Termostatos regulables
- 2 Velocidades
- Protección contra sobrecalentamiento
- Pies anti-deslizantes
- Potencia: 2500 Watts

IT | PIASTRA ELETTRICA

- Corpo in acciaio inox
- 2 Bruciatori
- Diametro della piastra 1: 18,5 cm
- Diametro della piastra 2: 15,5 cm
- 2 Termostati regolabili
- 2 Spie di alimentazione
- Protezione contro il surriscaldamento
- Piedini antiscivolo
- Potenza: 2500 Watt

PT | PLACA ELÉCTRICA

- Estrutura em aço inoxidável
- 2 Discos
- Diámetro placa eléctrica 1: 18,5 cm
- Diámetro placa eléctrica 2: 15,5 cm
- 2 Termostatos reguláveis
- 2 Interruptor luminoso
- Proteção contra sobreaquecimento
- Pés antiderrapantes
- Potência: 2500 Watt

SV | DUBBEL KOKPLATTA

- Rostfritt hölje
- 2 Brännare
- Diameter kokplatta 1: 18,5 cm
- Diameter kokplatta 2: 15,5 cm
- 2 Justerbara termostater
- 2 Strömindikeringsslampor
- Skydd mot överhettning
- Anti-glid fötter
- Effekt: 2500 Watt

PL | PLYTA ELEKTRYCZNA

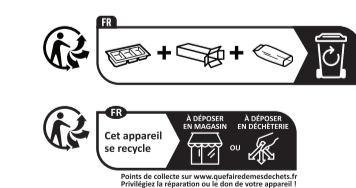
- Obudowa ze stali szlachetnej
- 2 Palniki
- Średnica płyty 1: 18,5 cm
- Średnica płyty 2: 15,5 cm
- 2 Regulowalny termostat
- 2 Lampki kontrolne
- Zabezpieczenie przed przegrzaniem
- Nóżki antypoślizgowe
- Moc: 2500 Watt

TR | İKİ GÖZLÜ ELEKTRİKLİ OCAK

- Paslanmaz çelik gövde
- 2 Brülörler
- Isotici tabla çapı: 18,5 cm
- Isotici tabla çapı: 15,5 cm
- 2 Ayarlanabilinir ocak ayan
- 2 Güç gösterge ışıkları
- Aşınmı koruması
- Kaymaz ayak
- Güç: 2500 Watt



8 713016 062482



★★★
TRISTAR
KP-6248 | DOUBLE HOT PLATE

★★★
**STAINLESS
STEEL**

2x

OFF

15.5cm

18.5cm

ON/OFF

ANTI SLIP FEET

2500W

Stylish stainless steel housing

2 Stepless thermostats

Overheat protection

Diameter hot plates: 18,7 cm and 15,5 cm

2 Power indication lights

Anti slip feet

Power of 2500W

WWW.TRISTAR.EU