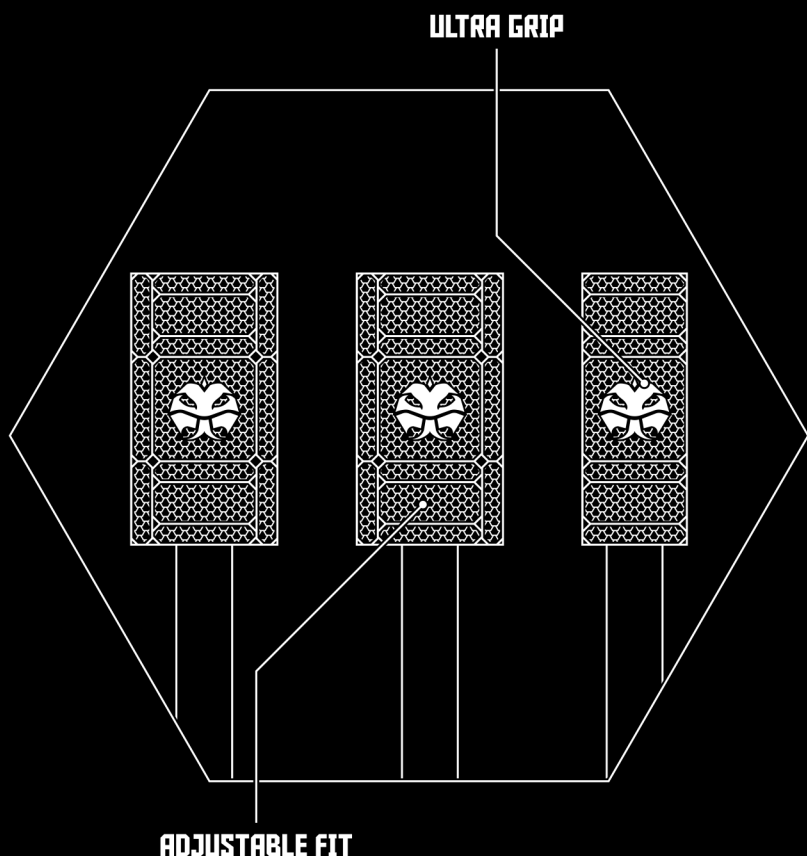


TUATARA

P E D A L G R I P

INSTRUCTIONS:

1. CLEAN THE PEDALS WITH THE WET WIPES
2. DRY THE PEDALS WITH THE DRY WIPES
3. PLACE THE SQUARE STICKER WITH LOGO IN THE CENTER OF YOUR PEDAL
4. USE THE EXTRA STICKERS TO FILL UP THE OPEN SPACES
5. LET'S RACE



IMPROVE YOUR SIM RACING SKILLS WITH OUR ULTRA PEDAL GRIP