



Register this product online
within 3 weeks of purchase and
get a free **10 year** warranty

www.sitecom.com/warranty

Installation guide

PC or Mac



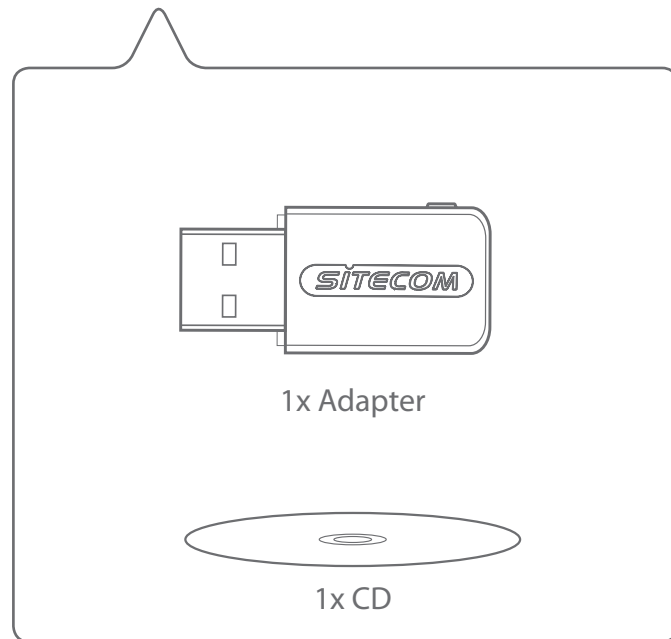
Wi-Fi USB adapter AC600

- UK** Full manual available in English
- NL** Volledige handleiding beschikbaar in het engels
- IT** Il manuale utente completo è disponibile in lingua inglese
- DE** Vollständiges Handbuch in englischer Sprache verfügbar
- ES** Manual completo disponible en inglés
- PT** Manual completo disponível em inglês
- FR** Manuel complet disponible en anglais
- RU** Подробное руководство доступно на английском языке



www.sitecom.com/helpdesk

Package content



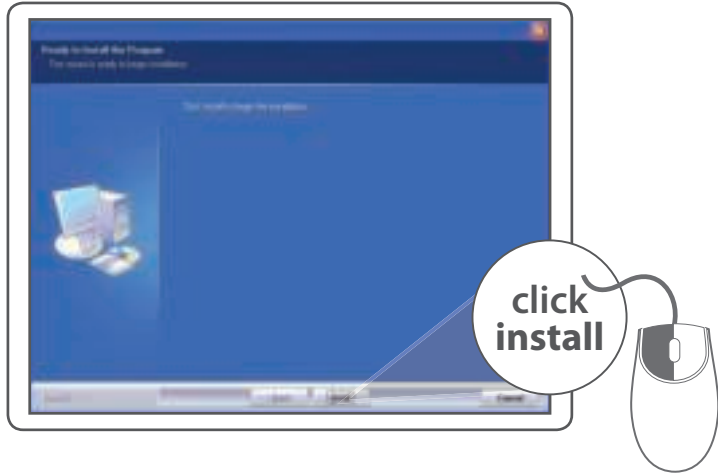
PC installation

1

- NL Installatie voor de PC
- IT Installazione su PC
- DE PC-Installation
- ES Instalación en PC
- PT Instalação PC
- FR Installation PC
- RU Установка на ПК



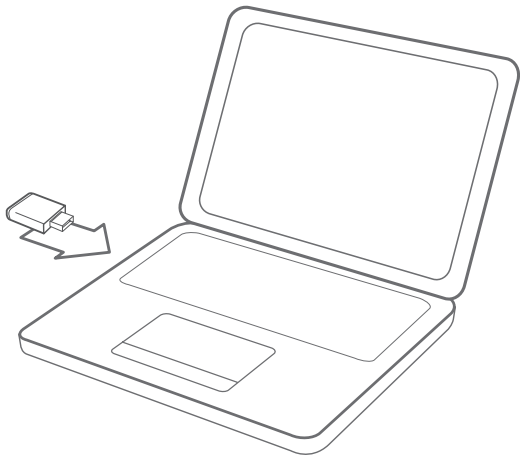
2



3

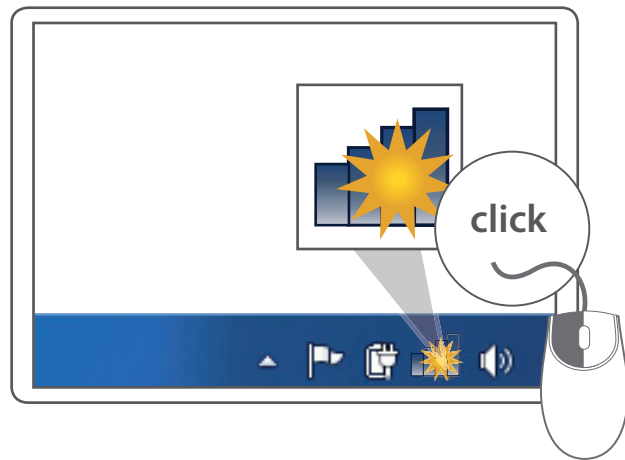


4

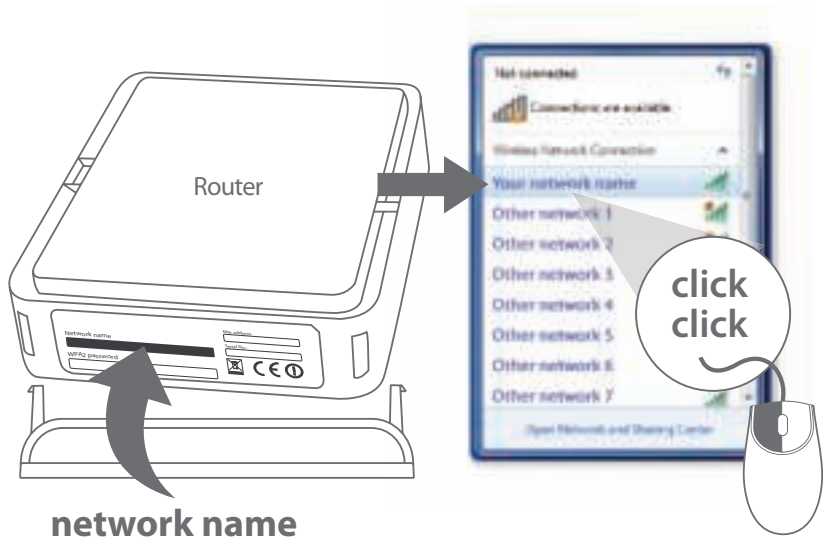


Make a connection

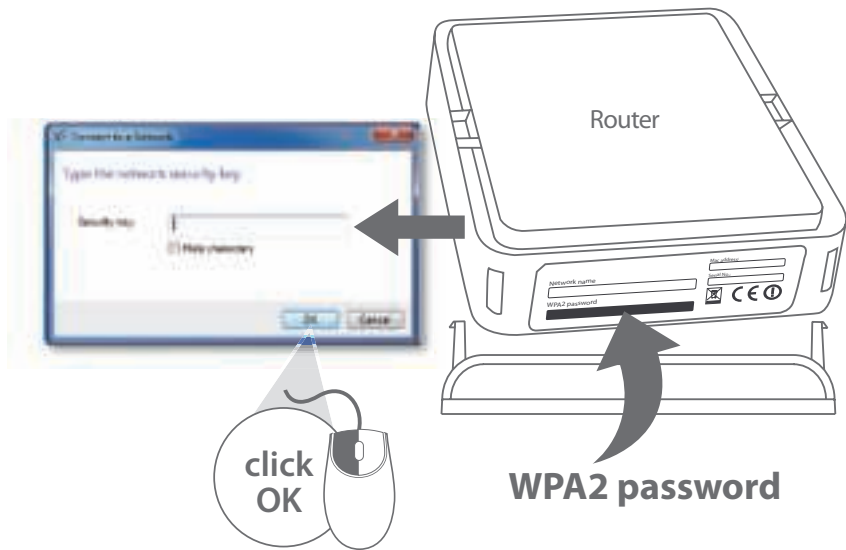
- NL Maak een verbinding met je PC
- IT Crea un collegamento
- DE Verbindung herstellen
- ES Realizar una conexión
- PT Fazer uma ligação
- FR Mise en place d'une connexion
- RU Создайте подключение



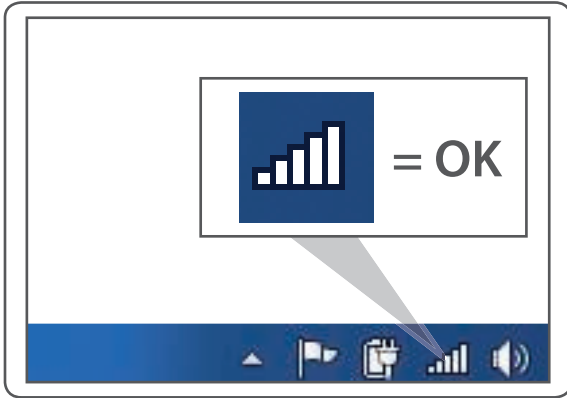
5



6



7



**Done.
Enjoy!**

Trouble? www.sitecom.com/helpdesk

Mac installation

1

NL Installatie voor de Mac
IT Installazione su Mac
DE Mac-Installation
ES Instalación en Mac
PT Instalação Mac
FR Installation Mac
RU Установка на Mac



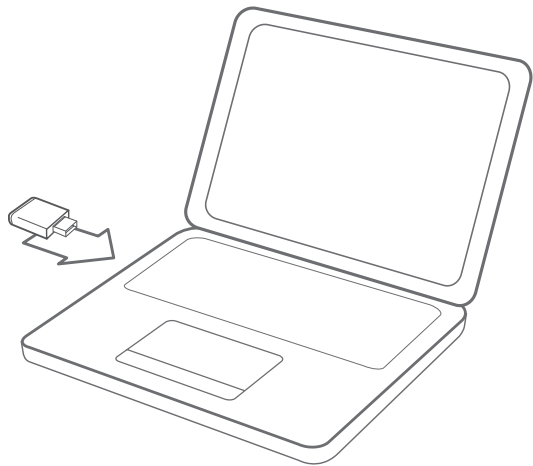
2



3

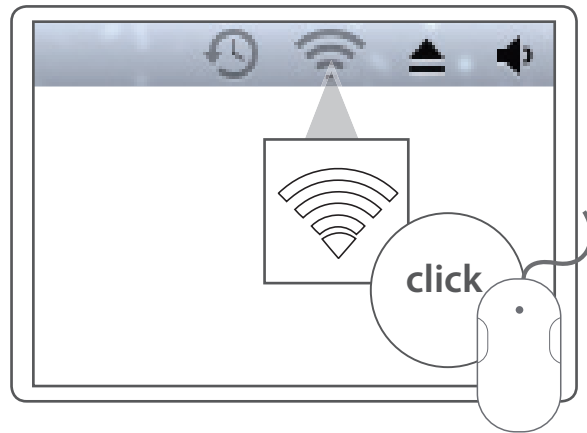


4

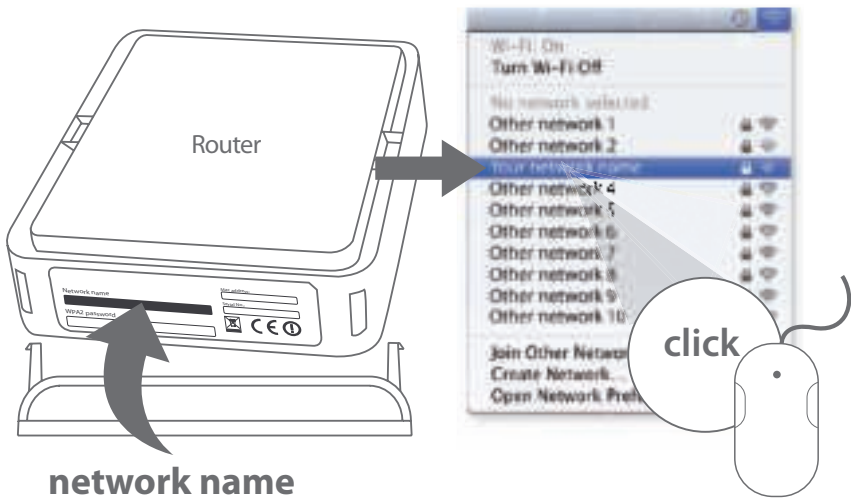


Make a connection

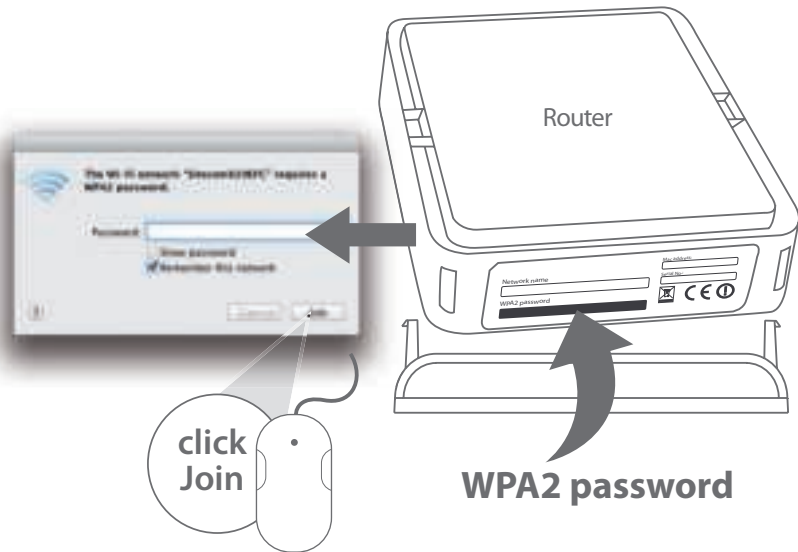
- NL Maak een verbinding met je Mac
- IT Crea un collegamento
- DE Verbindung herstellen
- ES Realizar una conexión
- PT Fazer uma ligação
- FR Mise en place d'une connexion
- RU Создайте подключение



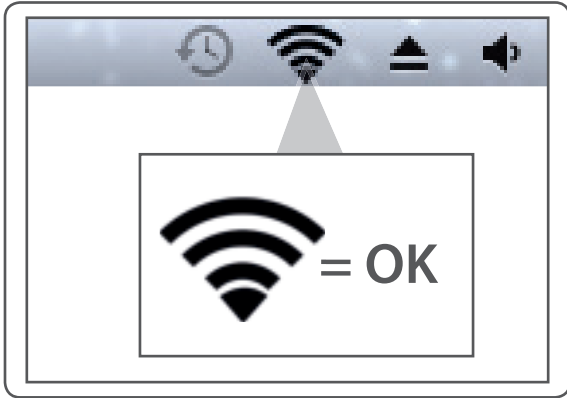
5



6



7



**Done.
Enjoy!**

Trouble? www.sitecom.com/helpdesk