

IE 60

Quick Guide
Guide rapide
Instrucciones resumidas
Guida rápido

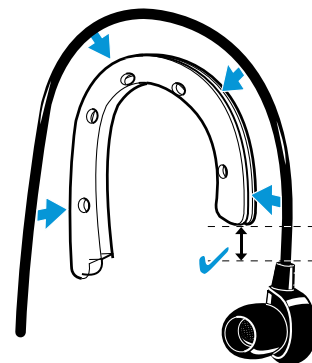
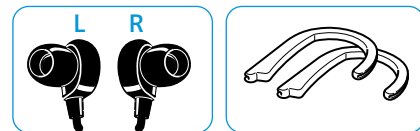
Kurzanleitung
Guida rapida
Beknopte
handleiding
クイックガイド

SENNHEISER

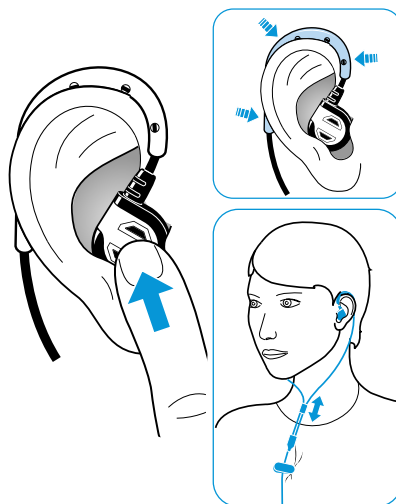
Delivery includes | Conteu | Volumen de suministro |
Volume de fornecimento | Lieferumfang | Dotazione |
Wordt geleverd met | 同梱されているもの



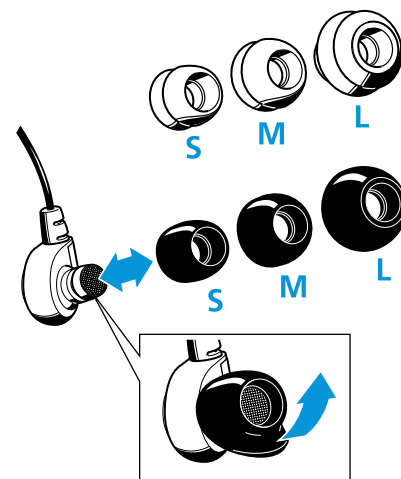
Adjusting the ear hooks | Ajuster les crochets
d'oreille | Ajustar los clips auditivos | Ajustar os
botões de ouvido | Ohrbügel anpassen | Regolazio-
ne degli uncini auricolari | Oorbeugels afstellen |
イヤーフックを調整する



Inserting the ear canal phones into the ears |
Insérer l'écouteur dans les oreilles | Inserción de los
auriculares en canal auditivo | Colocar os auscultadores
intra-auriculares nos ouvidos | Hörer ins Ohr
einsetzen | Inserimento delle cuffie Ear Canal nelle
orecchie | Oortelefoons in het oor aanbrengen | イヤ
ーカナルフォンを耳に挿入する



Replacing the ear adapters | Remplacer les adapta-
teurs d'oreille | Sustitución de los adaptadores para
las orejas | Substituir os adaptadores de ouvido |
Ohradapter austauschen | Sostituzione dei gommi-
ni | Ooradapters vervangen | イヤーアダプタを交
換する



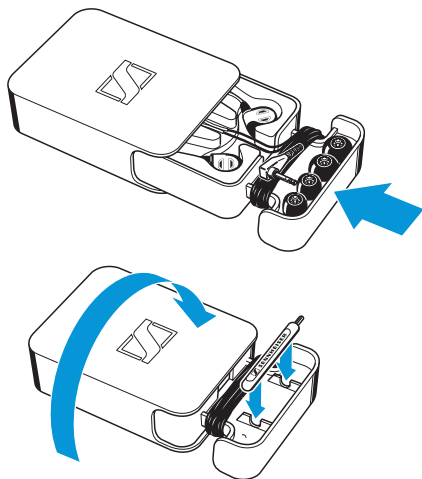
Sennheiser electronic GmbH & Co. KG

Am Labor 1, 30900 Wedemark, Germany
www.sennheiser.com

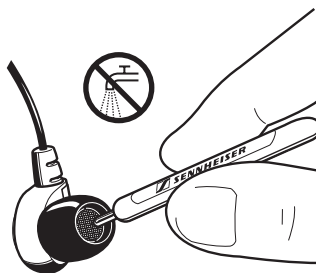
Printed in Germany, Publ. 06/11, 545199/A01

SENNHEISER

Storage and transportation | Stockage et transport | Almacenamiento y transporte | Armazenamento e transporte | Transportieren | Stoccaggio e trasporto | Transport en opslag | 保管と持ち運び



Cleaning | Nettoyage | Limpieza | Limpeza | Reinigen | Pulizia | Schoonmaken | クリーニング方法



Detailed information | Informations détaillées | Información detallada | Informação detalhada | Ausführliche Informationen | Informazioni dettagliate | Uitgebreide informatie | 詳細情報



www.sennheiser.com/support

Specifications | Caractéristiques techniques

| | |
|---------------------------------------|-------------------|
| Transducer principle | dynamic |
| Transducteur | dynamique |
| Ear coupling | Intraaural |
| Couplage oreille | intra-auriculaire |
| Frequency response | 10 – 18.000 Hz |
| Réponse en fréquence | 10 – 18 000 Hz |
| Nominal impedance | 16 Ω |
| Impédance nominale | 16 Ω |
| Sound pressure level at 1 kHz | 115 dB |
| Niveau de pression acoustique à 1 kHz | 115 dB |
| THD at 1 kHz | < 0.1% |
| DHT à 1 kHz | < 0,1 % |
| Jack plug | 3.5 mm angled |
| Connecteur jack | 3,5 mm, coudé |
| Cable length | 1.2 m |
| Longueur du câble | 1,2 m |
| Weight | ca. 14 g |
| Poids | env. 14 g |

Especificaciones | Especificações

| | |
|-----------------------------------|-----------------|
| Principio del transductor | dinámico |
| Princípio transdutor | dinâmico |
| Acoplamiento a la oreja | Intraaural |
| Tipo de auscultador | intra-auricular |
| Respuesta de frecuencia | 10 – 18.000 Hz |
| Resposta em frequência | 10 – 18.000 Hz |
| Impedancia nominal | 16 Ω |
| Impedância nominal | 16 Ω |
| Nível de presión acústica a 1 kHz | 115 dB |
| Nível de pressão sonora a 1 kHz | 115 dB |
| THD a 1 kHz | < 0,1 % |
| Distorsão harmónica total a 1 kHz | < 0,1 % |
| Enchufe jack | 3,5 mm acodado |
| Tipo de conector | 3,5 mm angulado |
| Longitud del cable | 1,2 m |
| Comprim. do cabo | 1,2 m |
| Peso | aprox. 14 g |
| Peso | aprox. 14 g |

Technische Daten | Specifiche

| | |
|---------------------------------------|-------------------|
| Wandlerprinzip | dynamisch |
| Principio del trasduttore | dinamico |
| Ohrankopplung | Ohrkanal |
| Tipo di cuffia | intra-aurale |
| Übertragungsbereich | 10 – 18 000 Hz |
| Risposta in frequenza | 10 – 18.000 Hz |
| Nennimpedanz | 16 Ω |
| Impedenza nominale | 16 Ω |
| Schalldruckpegel bei 1 kHz | 115 dB |
| Livello di pressione acustica a 1 kHz | 115 dB |
| Klirrfaktor bei 1 kHz | < 0,1 % |
| Distorsione armonica totale a 1 kHz | < 0,1 % |
| Klinkenstecker | 3,5 mm, gewinkelt |
| Spinotto jack | 3,5 mm angolato |
| Kabellänge | 1,2 m |
| Lunghezza cavo | 1,2 m |
| Gewicht | ca. 14 g |
| Peso | ca. 14 g |

Specificaties | 仕様

| | |
|-----------------------------|----------------|
| Omvormerprincipe | dynamic |
| トランスデューサー方式 | ダイナミック |
| Koppelmethode | intra-auraa |
| 形状 | カナル型 |
| Frequentie | 10 – 18.000 Hz |
| 周波数特性 | 10 – 18.000 Hz |
| Nominale impedantie | 16 Ω |
| 公称インピーダンス | 16 Ω |
| Geluidsdrumniveau bij 1 kHz | 115 dB |
| 音圧レベル | 115 dB |
| THD bij 1 kHz | < 0.1 % |
| 歪み率 | < 0.1% |
| Jackplug | 3,5 mm in hoek |
| コネクタ | 3.5 mm L型 |
| Kabellengte | 1,2 m |
| ケーブル長 | 1.2 m |
| Gewicht | ca. 14 g |
| 重量 | 約 14 g |